

Supplementary

# Usefulness of thulium-doped fiber laser and diode laser in zero ischemia kidney surgery – comparative study in pig model

Bogusława Żywicka<sup>1</sup>, Jolanta Bujok<sup>2,\*</sup>, Maciej Janeczek<sup>3</sup>, Albert Czerski<sup>2</sup>, Maria Szymonowicz<sup>1</sup>, Maciej Dobrzyński<sup>4</sup>, Jacek Świdorski<sup>5</sup> and Zbigniew Rybak<sup>1</sup>

<sup>1</sup> Department of Experimental Surgery and Biomaterial Research, Wrocław Medical University, Bujwida 44, 50-368 Wrocław, Poland; bogusława.zywicka@umed.wroc.pl (B.Z.); maria.szymonowicz@umed.wroc.pl (M.S.); zbigniew.rybak@umed.wroc.pl (Z.R.)

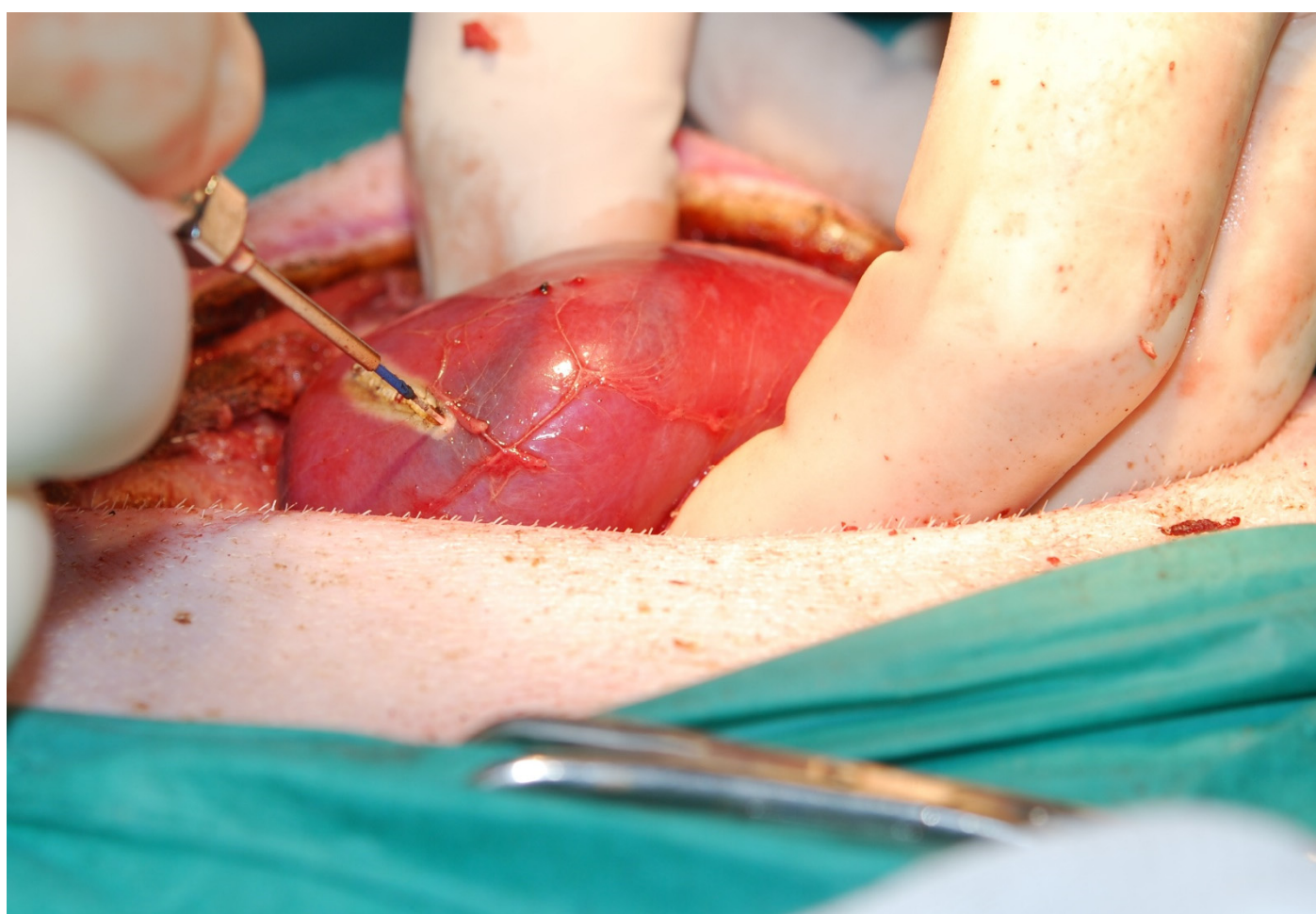
<sup>2</sup> Department of Animal Physiology and Biostructure, Division of Animal Physiology, Wrocław University of Environmental and Life Sciences, C.K. Norwida 31, 50-375 Wrocław, Poland; albert.czerski@upwr.edu.pl

<sup>3</sup> Department of Animal Physiology and Biostructure, Division of Anatomy, Wrocław University of Environmental and Life Sciences, Koźuchowska 1, 51-631 Wrocław, Poland; maciej.janeczek@upwr.edu.pl

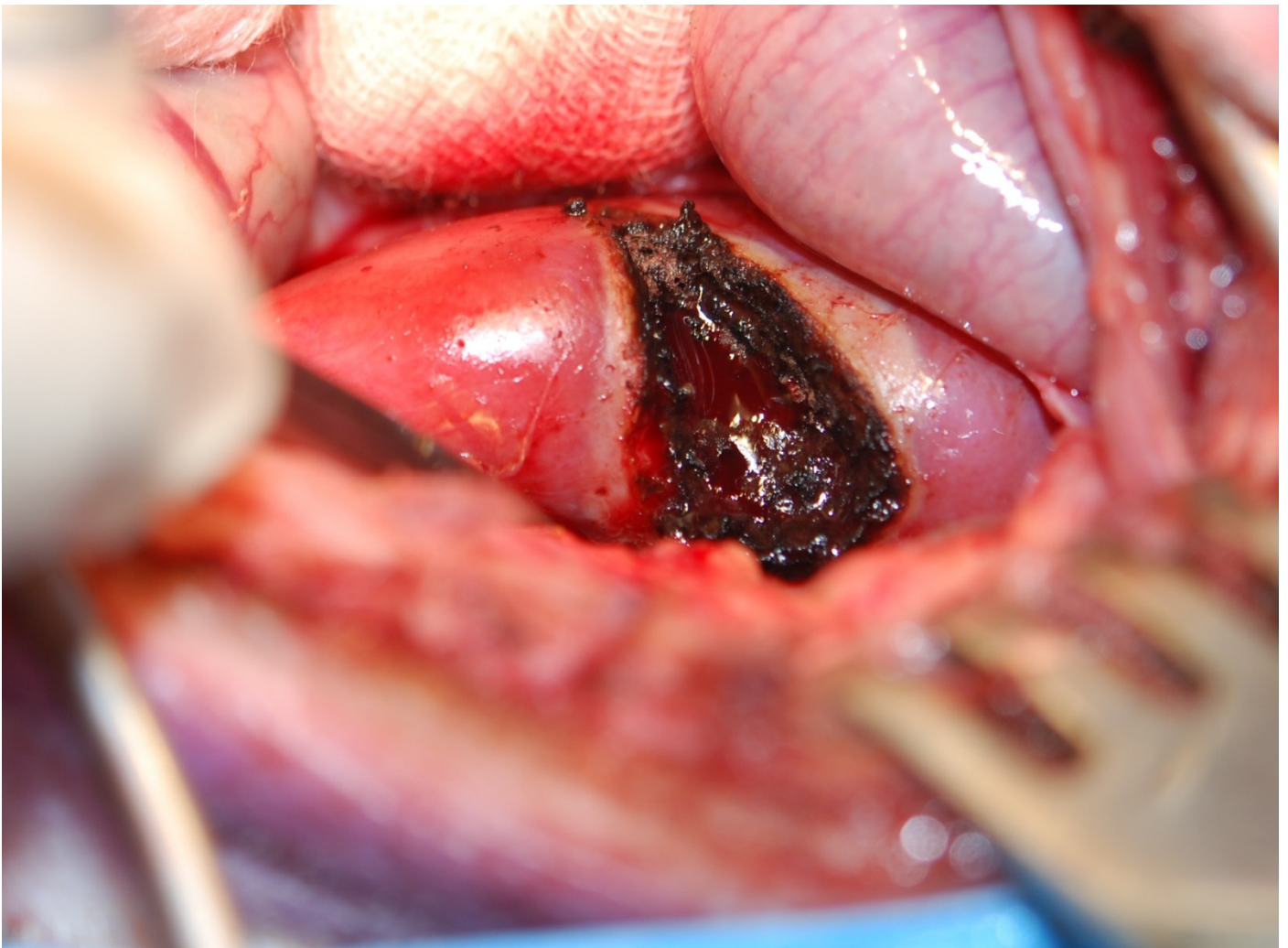
<sup>4</sup> Department of Conservative Dentistry and Pedodontics, Wrocław Medical University, Krakowska 26, 50-425 Wrocław, Poland; maciej.dobrzynski@umed.wroc.pl

<sup>5</sup> Institute of Optoelectronics, Military University of Technology, Kaliskiego 2, 00-908 Warsaw, Poland; jacek.swiderski@wat.edu.pl

\* Correspondence: Jolanta.bujok@upwr.edu.pl



**Figure S1.** Kidney incision with a thulium-doped fiber laser.



**Figure S2.** Porcine kidney after laser partial nephrectomy.