

Supplementary Material

Microstructure evolution in plastic deformed bismuth telluride for the enhancement of thermoelectric properties

Haishan Shen¹, In-Yea Kim², Jea-Hong Lim², Hong-Baek Cho¹, Yong-Ho Choa^{1,*}

¹Department of Materials Science and Chemical Engineering, Hanyang University, 55 Hanyangdaehak-ro, Sangnok-gu, Ansan, Gyeonggi-do 15588, Republic of Korea.

²Department of Materials Science and Engineering, Gachon University, 1342 Seongnamdaero, Sujeong-gu, Seongnam-si, Gyeonggi-do 13120, Republic of Korea.

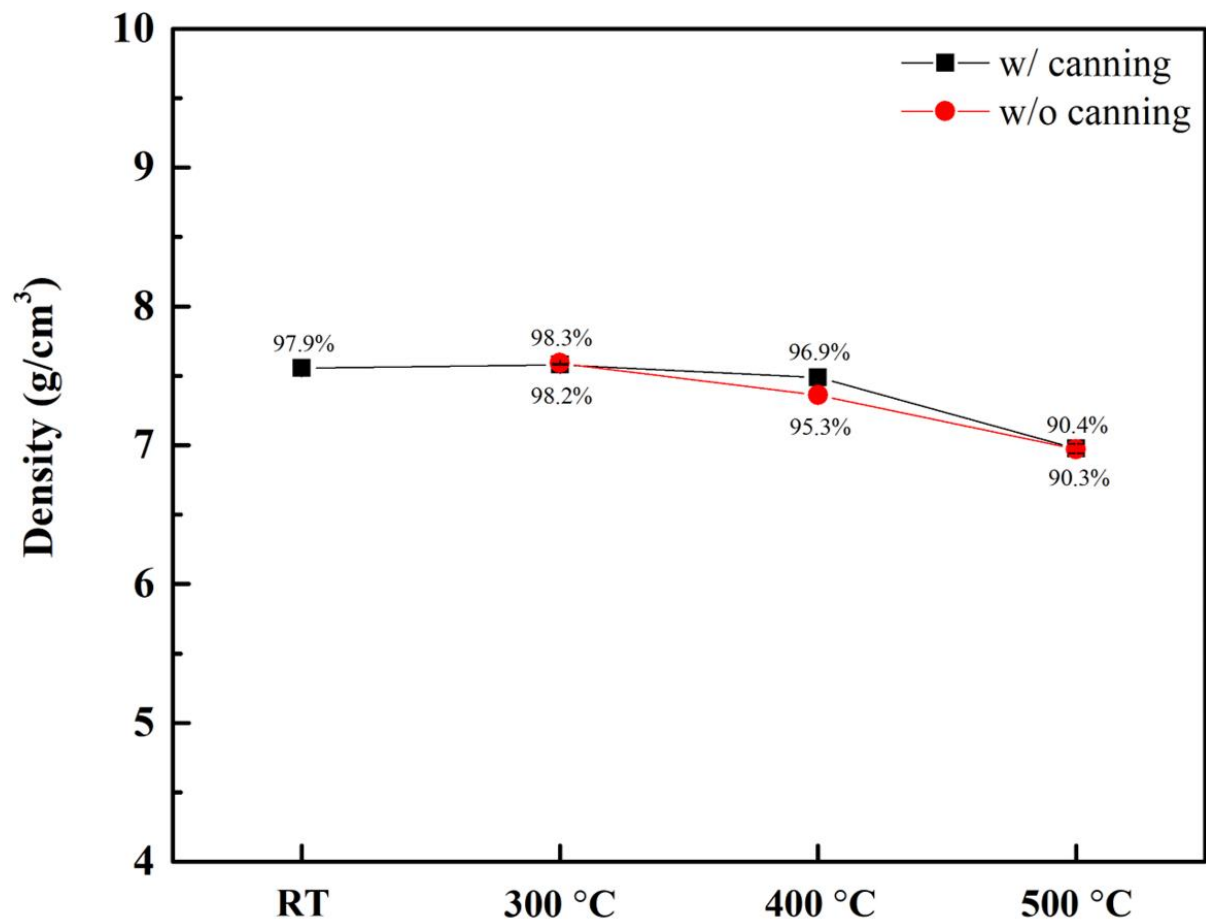


Figure S1. Comparison of pellet densities at RT, 300, 400, and 500 °C.

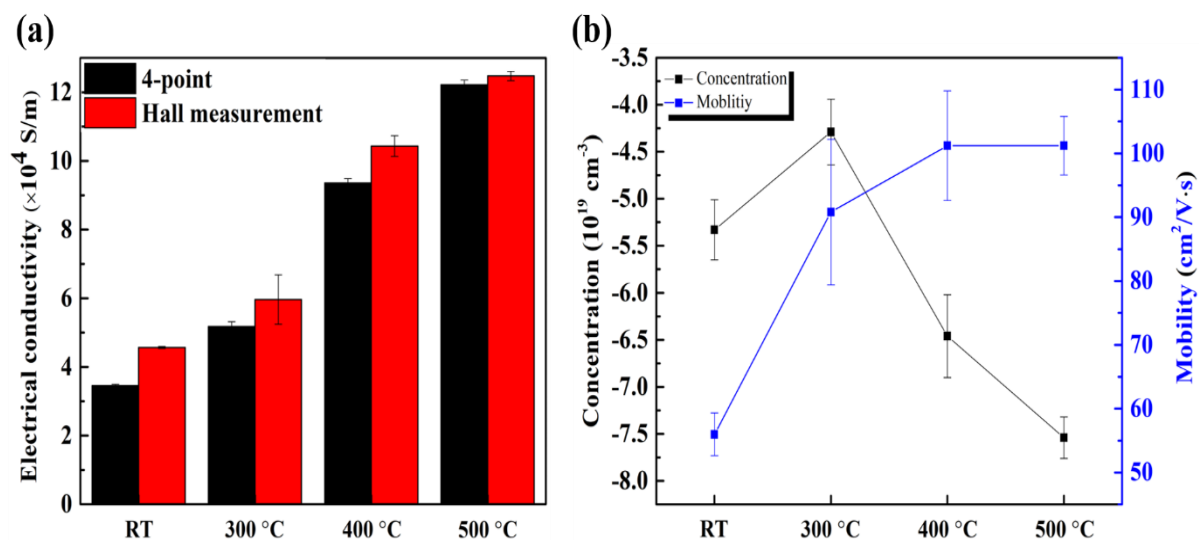


Figure S2. (a) comparison of 4-point and hall measurement about electrical conductivity and (b) carrier concentration and mobility from hall measurement.

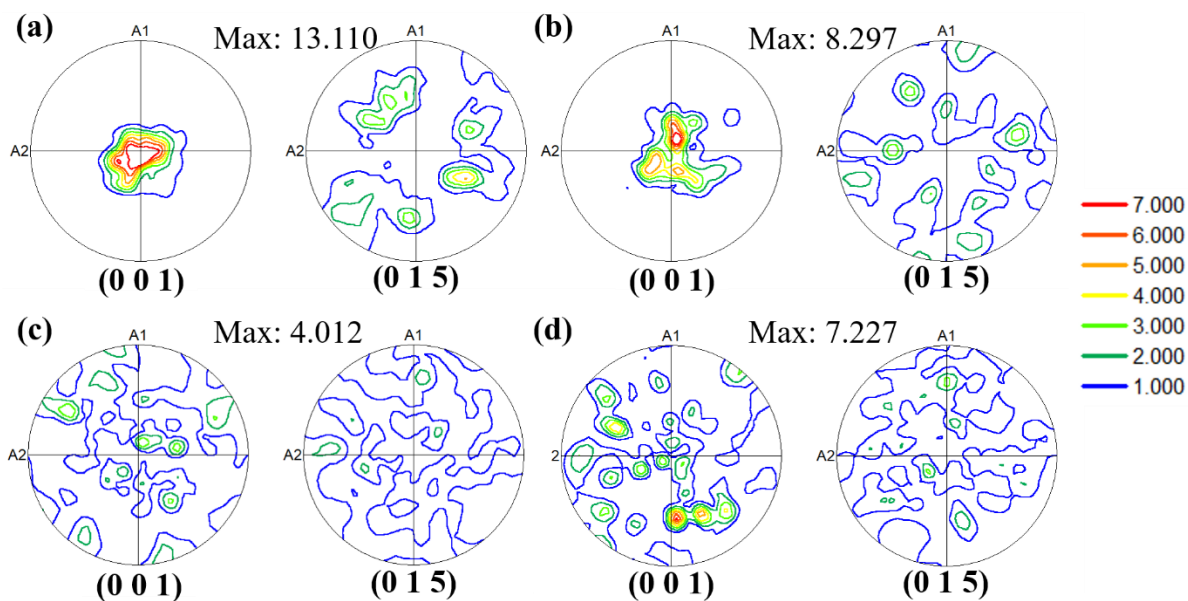


Figure S3. EBSD pole figure images of samples for (0 0 1) and (0 1 5) planes at (a) RT, (b) 300 °C, (c) 400 °C, and (d) 500 °C. Electron diffraction intensity is represented by color marks in scale bar.

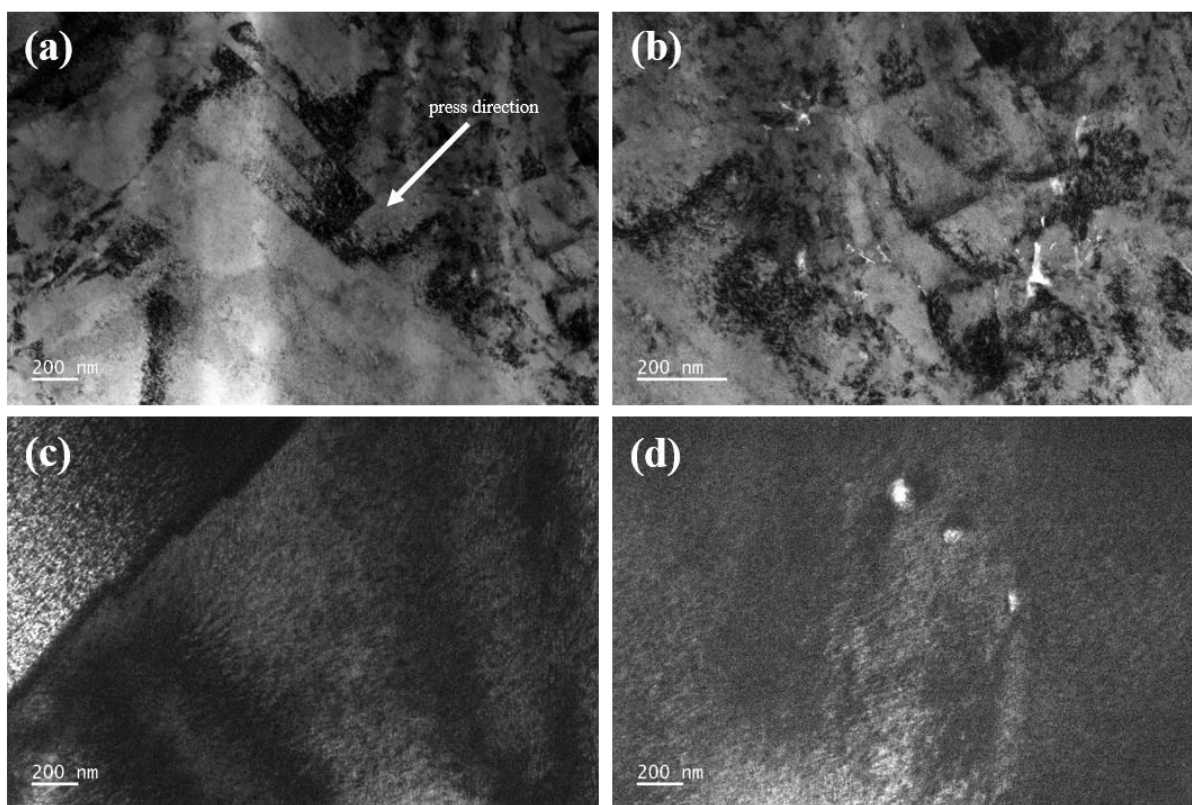


Figure S4. TEM images of cold-sintered samples (a–b) at RT and (c–d) annealed at 500 °C with canning package.

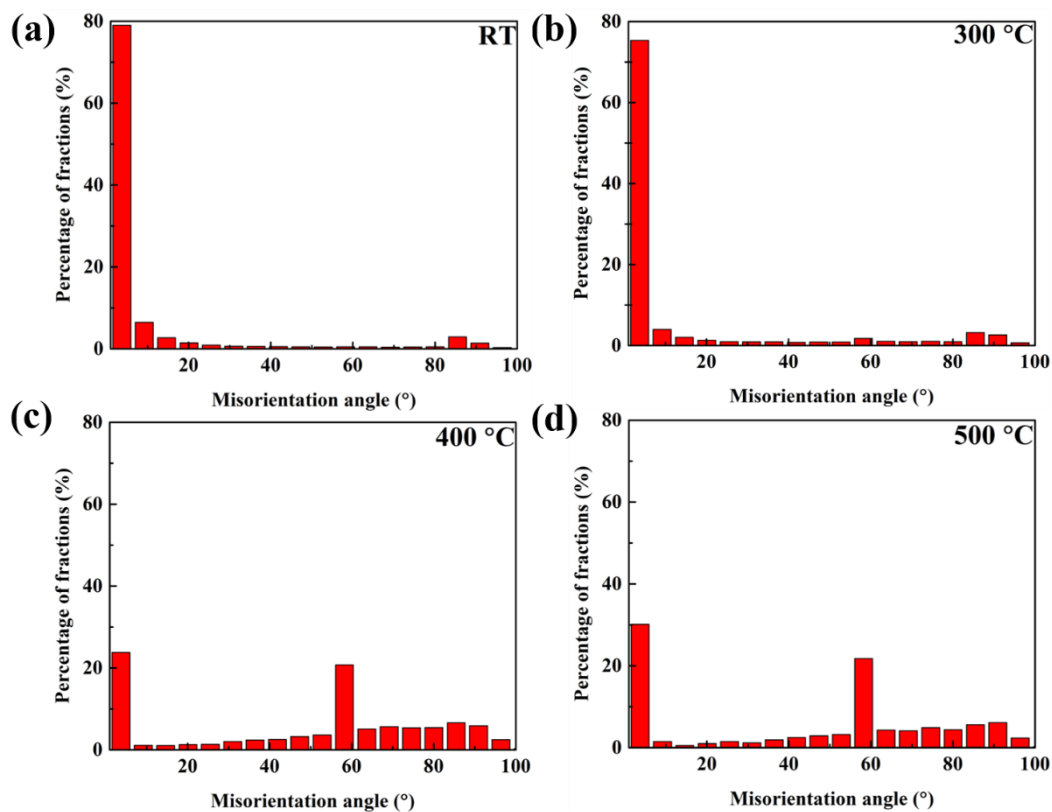


Figure S5. Misorientation angle distribution based on EBSD data at RT, 300, 400, and 500 °C.