

Article

Nano-Needle Boron-Doped Diamond Film with High Electrochemical Performance of Detecting Lead Ions

Xiaoxi Yuan ^{1,2}, Mingchao Yang ³, Xu Wang ¹, Yongfu Zhu ^{1,*} and Feng Yang ^{2,*}

¹ Key Laboratory of Automobile Materials, Ministry of Education, School of Materials Science and Engineering, Jilin University, Changchun 130022, China; xxyuan@jleu.edu.cn (X.Y.)

² Institute for Interdisciplinary Quantum Information Technology, Jilin Engineering Normal University, Changchun 130052, China

³ Department of Physics, Hebei Normal University of Science and Technology, Qinhuangdao 066000, China; yangmc17@mails.jlu.edu.cn

* Correspondence: yfzhu@jlu.edu.cn (Y.Z.); yangfeng@jleu.edu.cn (F.Y.)

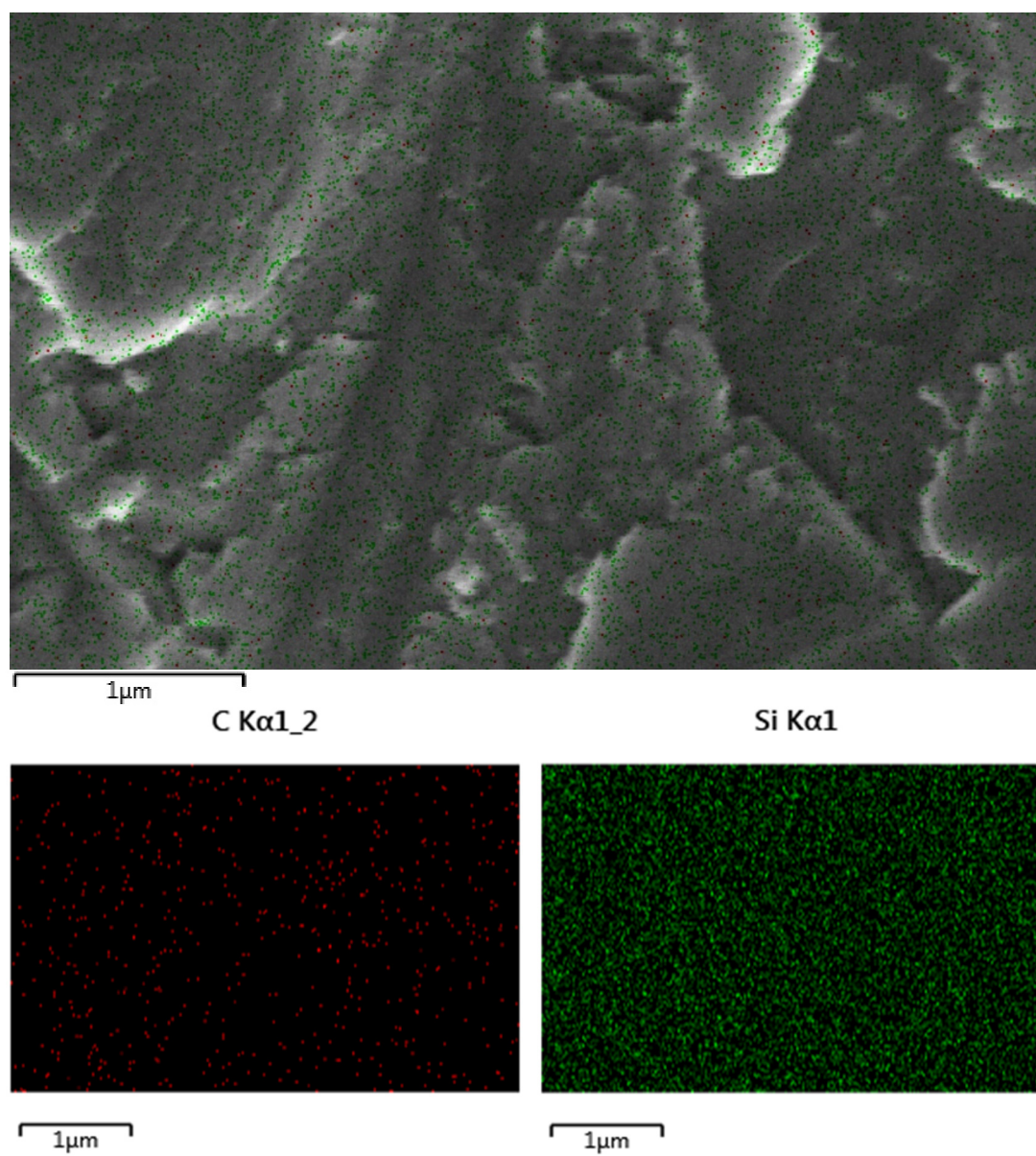


Figure S1. SEM and EDS images of the seeded Si substrates.

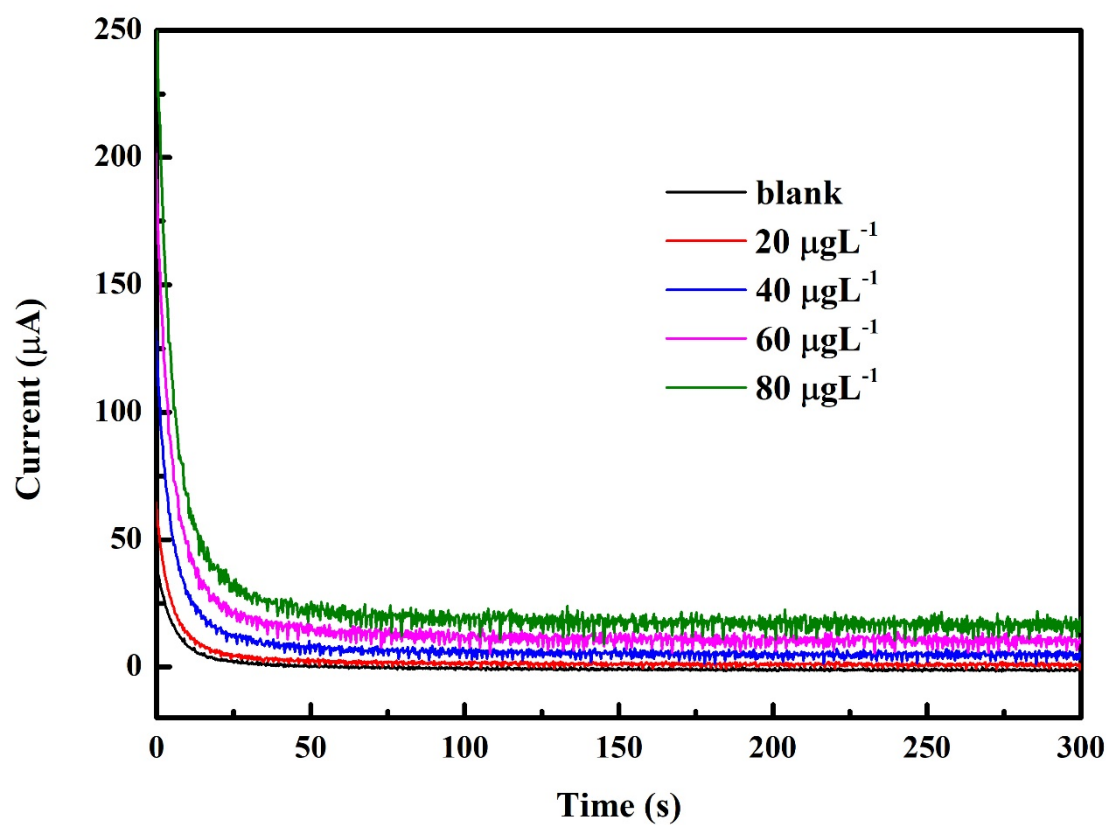


Figure S2. Chronoamperometry i-t curve at Pb^{2+} concentrations between 0 and $80 \mu\text{g/L}^{-1}$.

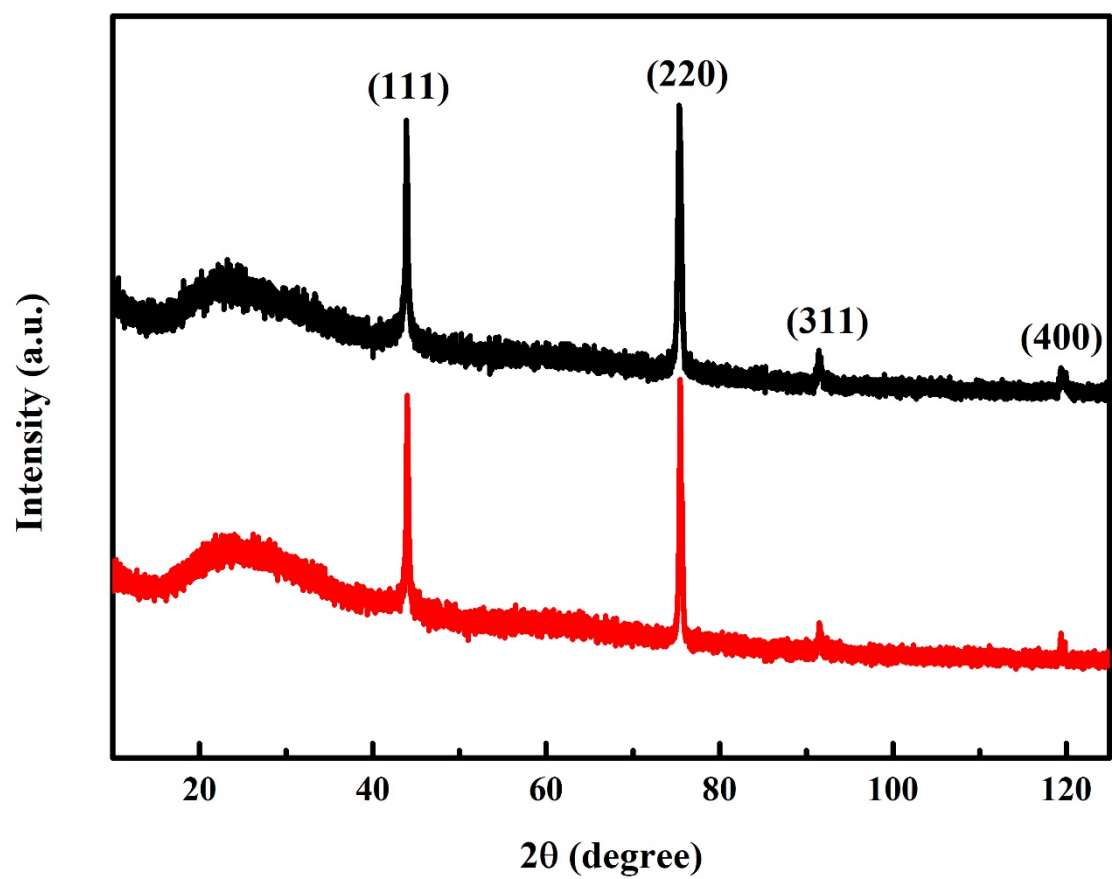


Figure S3. XRD of NNBDD before (black line) and after (red line) electrochemical sensing tests.