

A Novel Sodium–Potassium Anode Supported by Fluorinated Aluminum Foam

Jin Lou ^{1,*}, Jingan Zhou ², Xiaosong Ma ², Kanghua Chen ¹ and Songyi Chen ¹

¹ Light Alloy Metal Research Institute, Central South University, Changsha 410083, China; khchen@csu.edu.cn (K.C.); sychen08@csu.edu.cn (S.C.)

² Hunan Provincial Key Laboratory of Carbon Neutrality and Intelligent Energy, School of Resources & Environment, Hunan University of Technology and Business, Changsha 410205, China; 17373564507@163.com (J.Z.); ma15367552578@163.com (X.M.)

* Correspondence: jinlou@csu.edu.cn

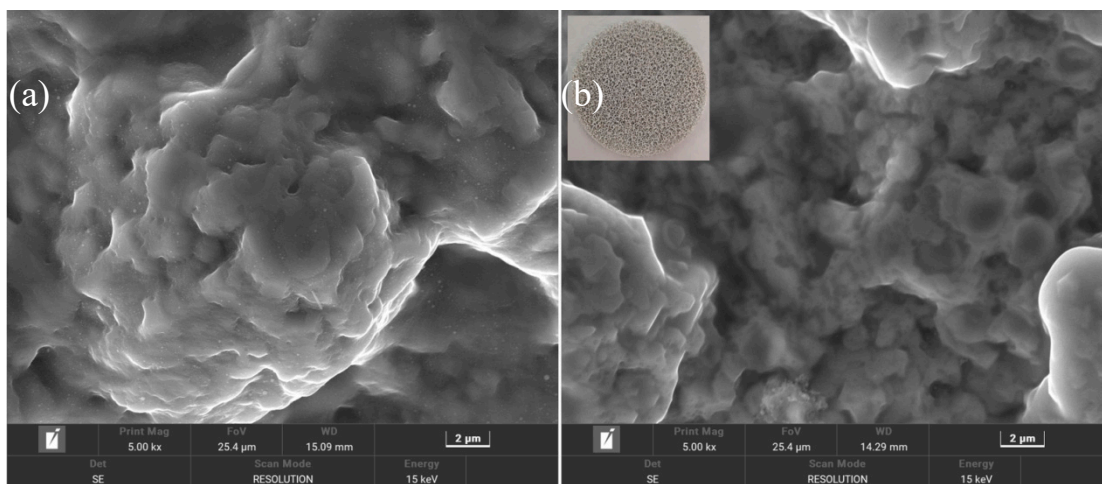


Figure S1. The SEM/photographic images of (a) pristine Al foam and (b) FAF.

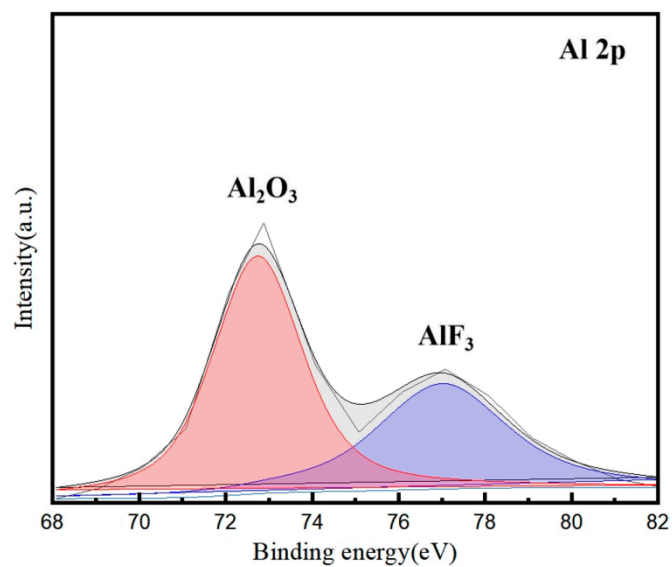


Figure S2. X-ray photoelectron spectroscopy (XPS) spectra of the Al element of FAF electrode.

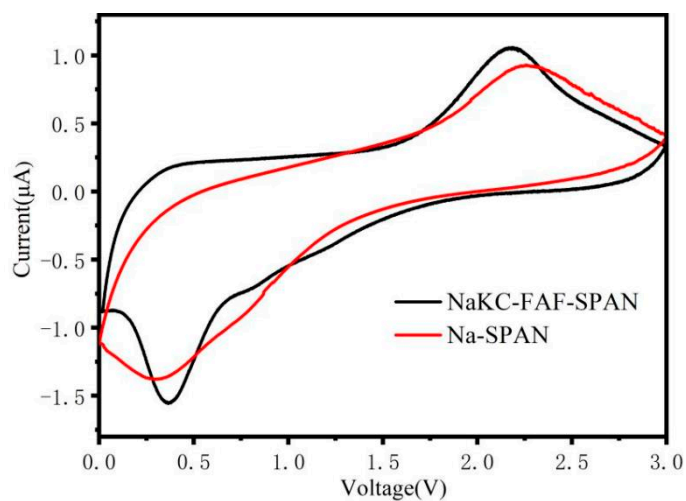


Figure S3. The CV curves of Na-SPAN/NaKC-FAF-SPAN at 0.1 mV s⁻¹

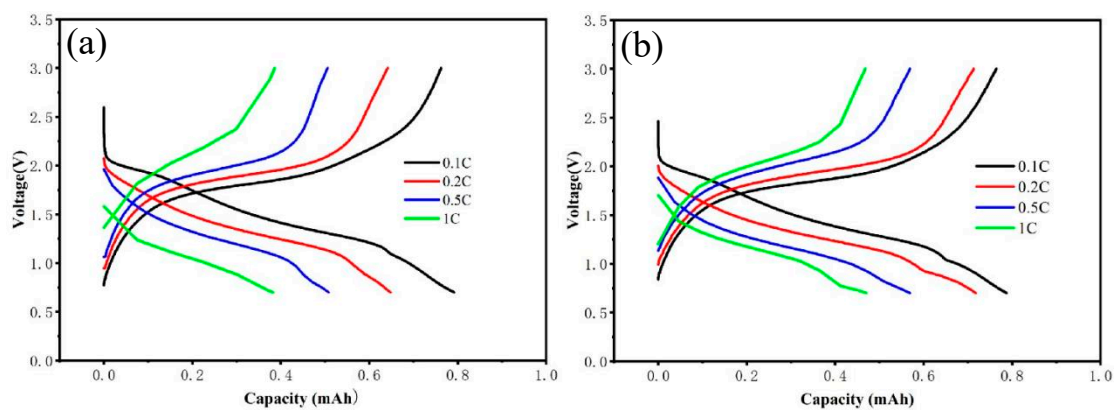


Figure S4. The Discharge-Charge profile during the rate performance: (a) Na-SPAN, (b) NaKC-FAF-SPAN.

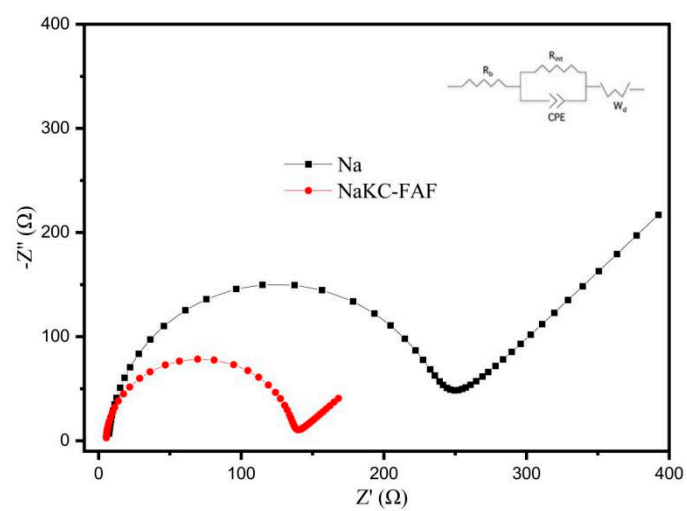


Figure S5. AC impedance test of Na-SPAN and NaKC-FAF-SPAN cells after 500th cycling

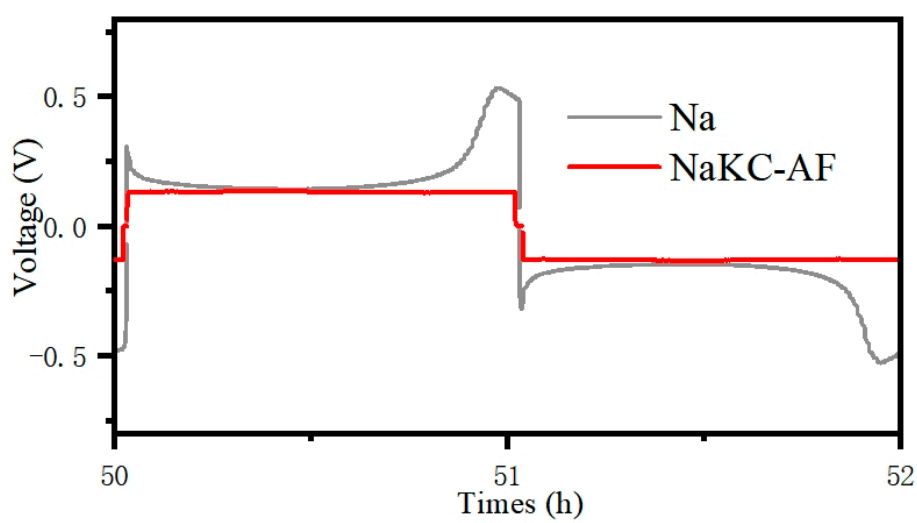


Figure S6. The polarization voltage of the symmetrical battery