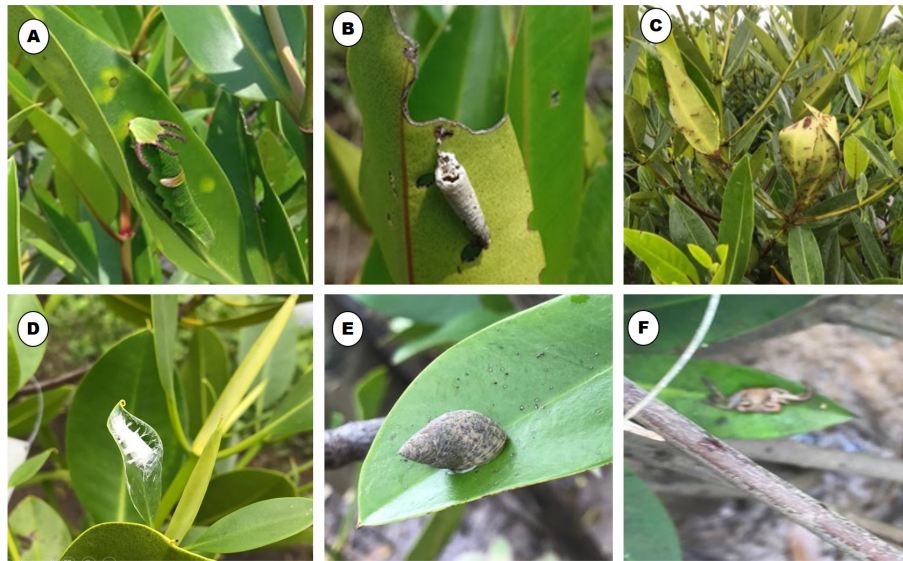


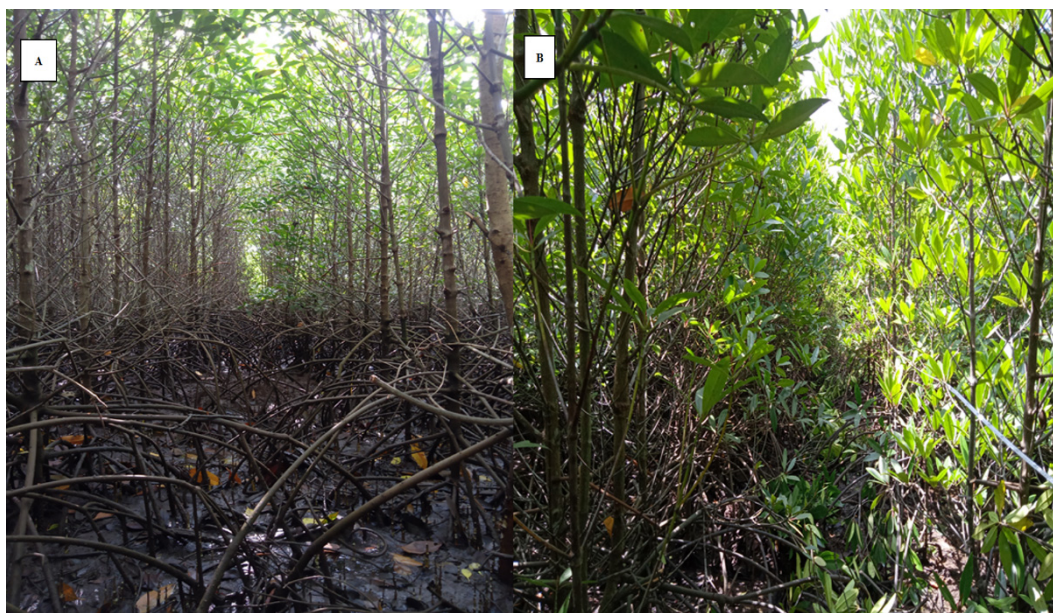
Supplementary Figures and Tables

Evaluation of plant growth and potential of carbon storage in the restored mangrove of an abandoned pond in Lubuk Kertang, North Sumatra, Indonesia

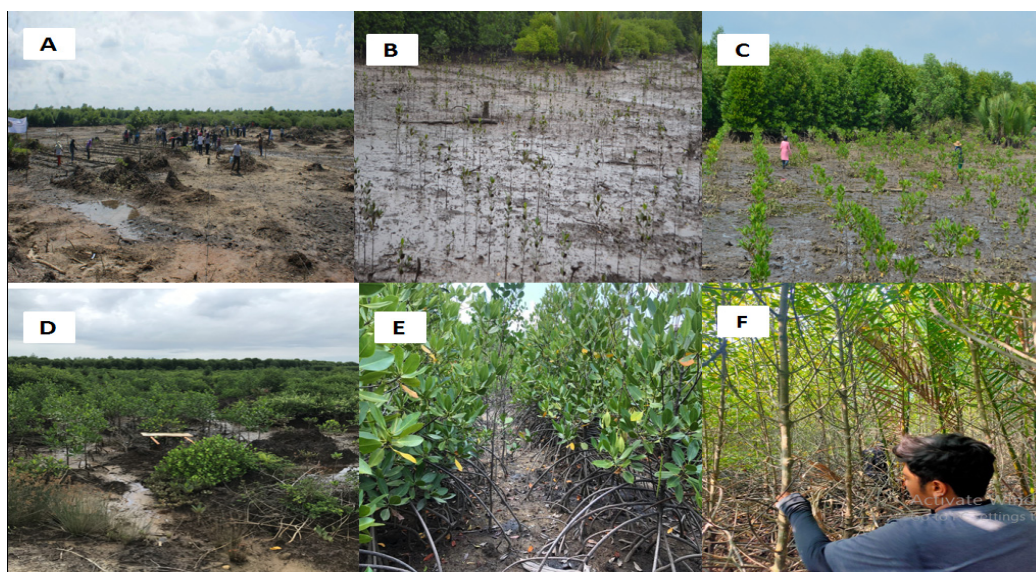
Rizka Amelia, Mohammad Basyuni, Alfinsyahri Alfinsayhri, Nurdin Sulistiyono, Bejo Slamet, Yuntha Bimantara, Salma Safrina Hashilah Harahap, Mikrajni Harahap, Insar Maulid Harahap, Shofiyah Sabilah Al Mustariroh, Sigit Dani Sasmito, Virni Budi Arifanti



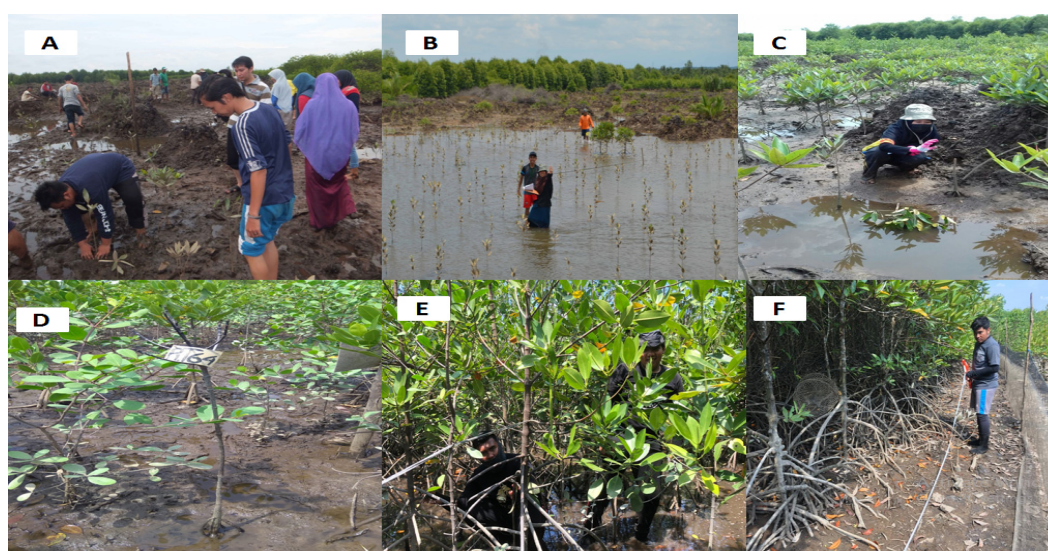
Supplementary Figure S1. Pests in 2015 and 2016 plots: (A) green hornworm, (B) bagworm, (C) weaver ant, (D) cocoons of Family Lepidoptera, (E) Family of gastropods, (F) Crab



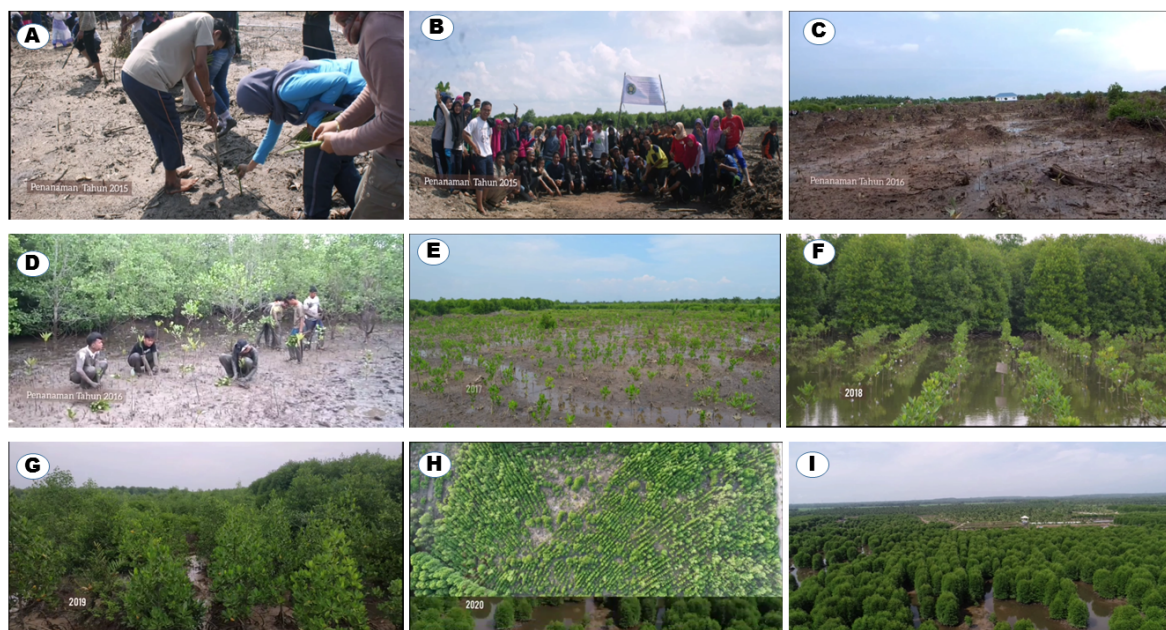
Supplementary Figure S2. Condition of the land for rehabilitation after 7 years. (A) Planting with seedlings; (B) Planting with propagules



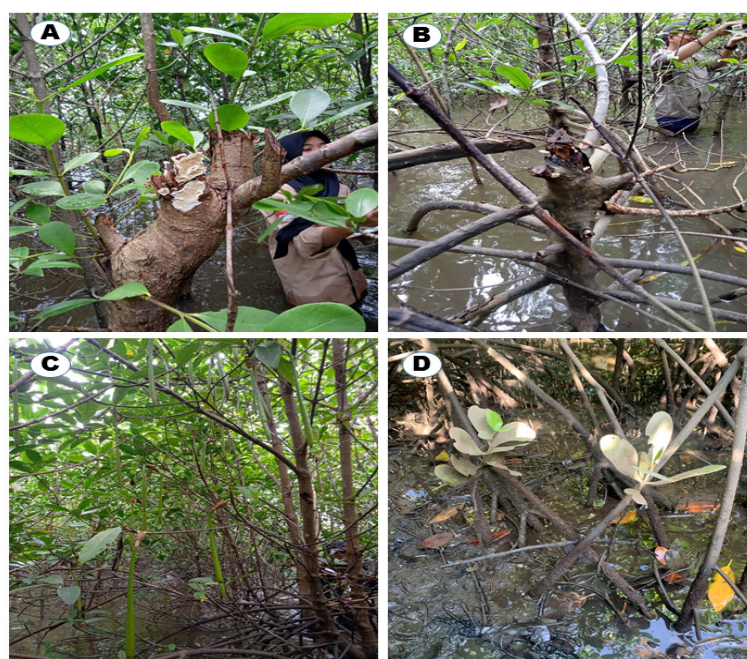
Supplementary Figure S3. Plant development in the rehabilitation area where planting with propagules was carried out. (A) When planting was carried out in 2015, (B) monitoring in 2016, (C) monitoring in 2017, (D) monitoring in 2018, (E) monitoring in 2019, (F) monitoring in 2020.



Supplementary Figure S4. Plant development in the rehabilitation area where planting using seedlings was carried out. (A) When planting was carried out in 2016, (B) monitoring in 2016, (C) monitoring in 2017, (D) monitoring in 2018, (E) monitoring in 2019, (F) monitoring in 2020.



Supplementary Figure S5. Condition of restored land from initial planting to 2022. (A) planting with propagules in 2015, (B) team members participating in planting propagules, (C) planting using seeds, (D) team members participating in planting with seedlings, (E) monitoring in 2017, (F) monitoring in 2018, (G) monitoring in 2019, (H) monitoring in 2020 using drones, (I) monitoring in 2022 using drones



Supplementary Figure S6. The current condition of the restoration site. (A) *Sonneratia alba* was logged, (B) *Rhizophora apiculata* was logged, (C) *R. apiculata* planted had produced propagules, (D) *S. alba* had new seedlings

Supplementary Table S1. Soil texture of mangrove rehabilitation land in Lubuk Kertang Village

	Soil texture		
	Clay	Silt	Sand
Propagule	87.22	9.29	3.49
Seedling	80.28	15.06	4.65