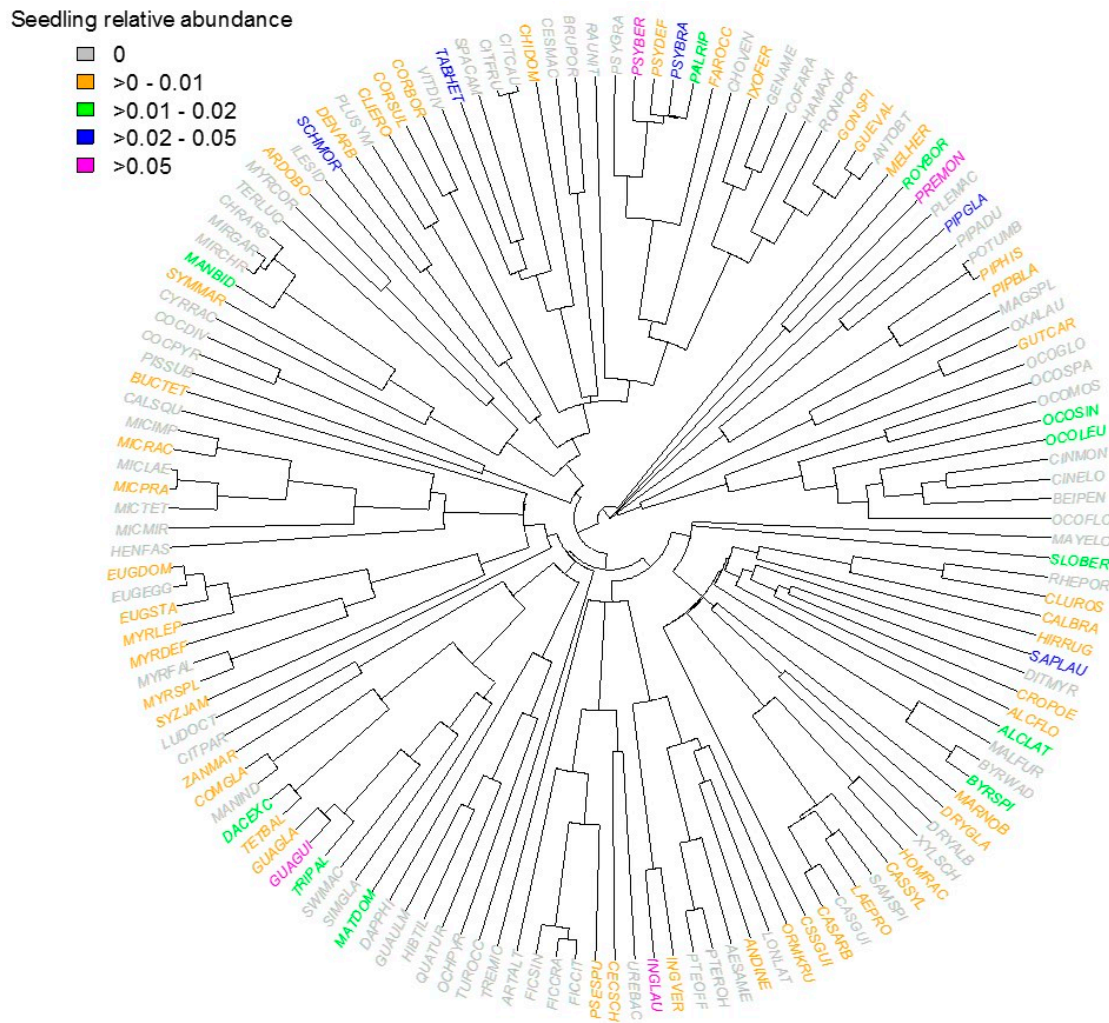
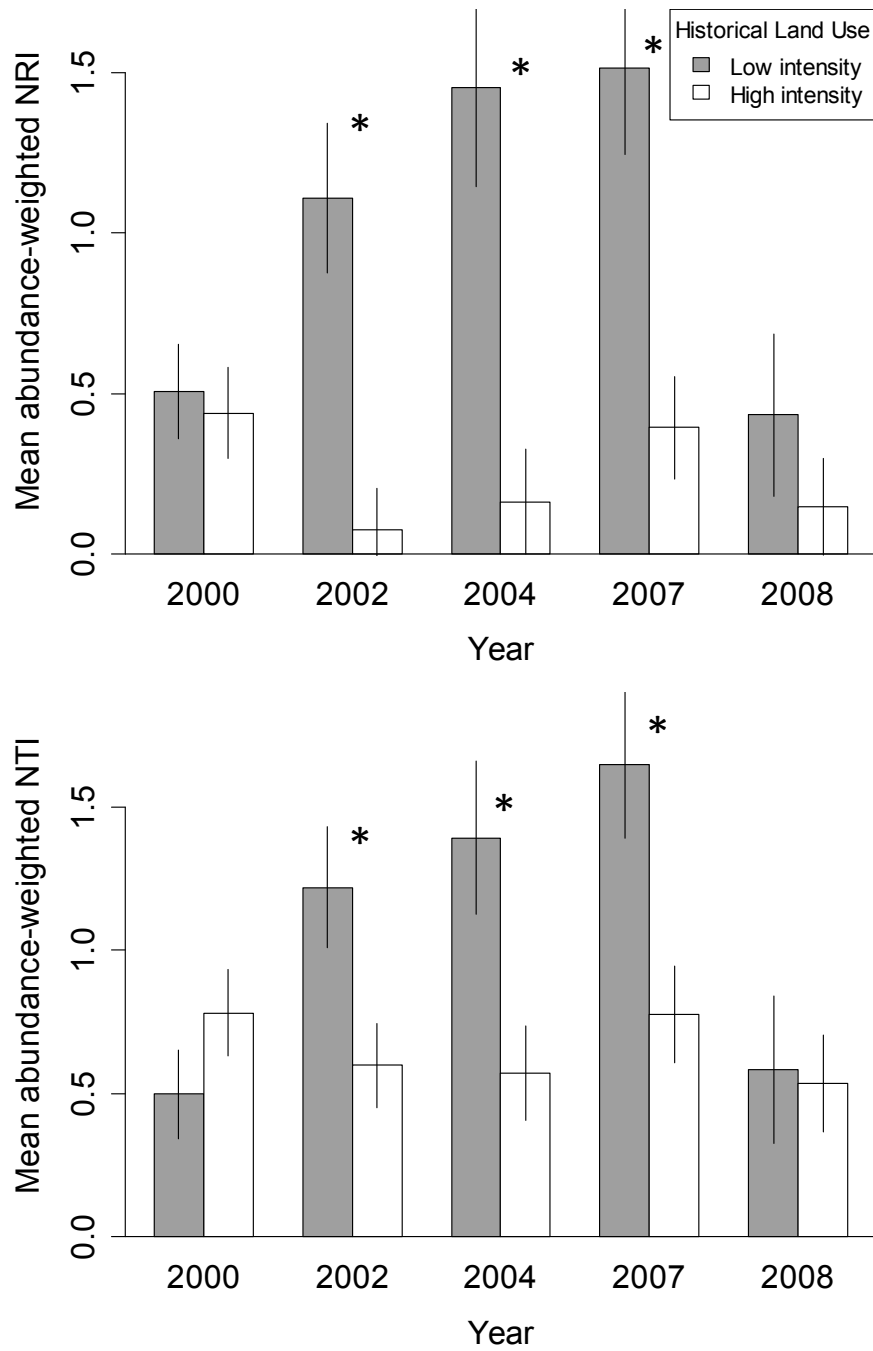


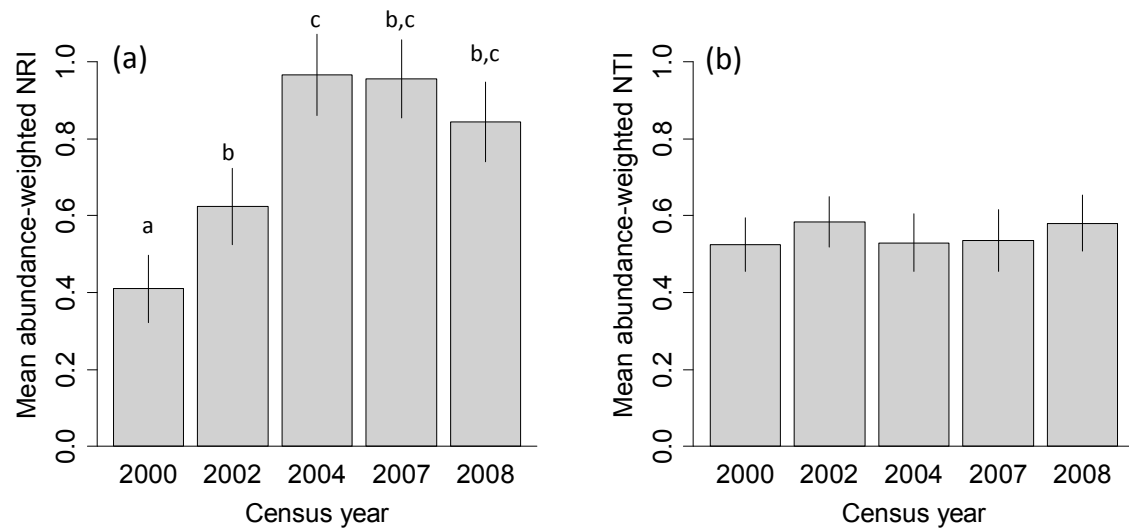
## Supplementary



**Figure S1** DNA barcode phylogeny for the Luquillo Forest Dynamics Plot. Colors correspond to species relative abundance in the 2000 seedling census. A table with the full species names and species codes can be downloaded from <http://luq.lter.network/data/luqmetadata118>.



**Figure S2** Mean phylogenetic relatedness of seedlings after excluding palm species in seedling plots located in the low-intensity land-use area (gray bars) versus the high-intensity land-use area (white bars) of the Luquillo Forest Dynamics Plot. Stars (\*) indicate years when values differed significantly between land use history categories ( $\alpha=0.05$ ).



**Figure S3** Mean similarity of seed mass values of seedlings within 2-m<sup>2</sup> seedling plots when palm species are excluded. Values of abundance-weighted NRI (a) and abundance-weighted NTI (b) measure the functional similarity of individuals in each plot. Bars represent 1 s.e. and letters indicate differences between years for NRI. There was no significant variation among years for NTI.

**Table S1** AIC values for neighborhood model comparisons with palm species excluded. Bold values indicate the best fit model (i.e. lowest AIC) for each census interval.

Model	Census interval			
	2000-02	2002-04	2004-07	2007-08
Null (No neighbors)	4133.2	2814.2	<b>2196.3</b>	1631.7
Total neighbor density	4126.5	<b>2811.1</b>	2198.2	1633.7
Conspecific neighbor density	4126.4	2811.9	2196.6	1632.7
Phylogenetic density	<b>4113.8</b>	2812.3	2196.6	<b>1630.4</b>