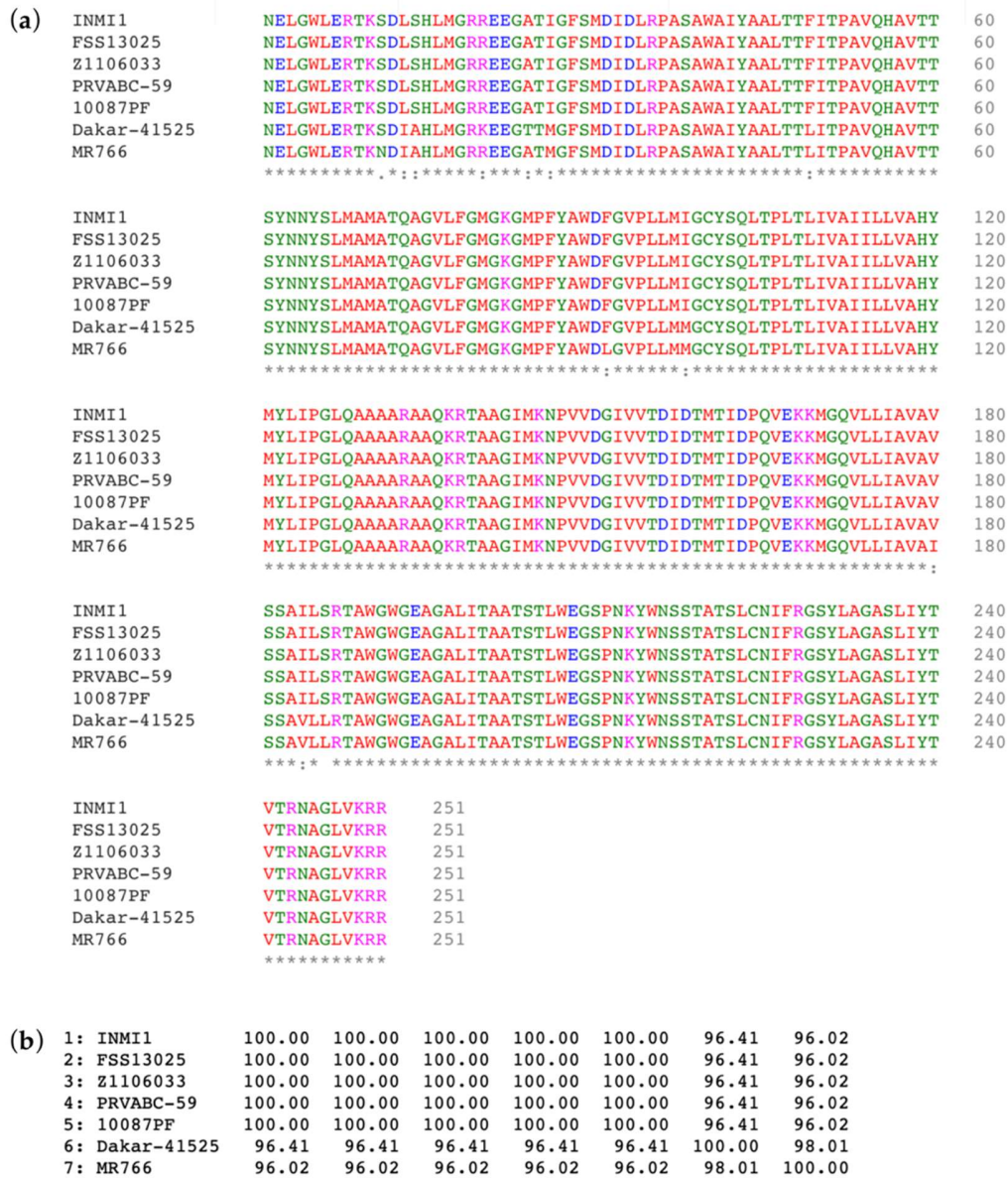


# SUPPLEMENTARY FILES

Fanunza et al. 2021. INMI1 Zika Virus NS4B Antagonizes the Interferon Signaling by suppressing STAT1 phosphorylation

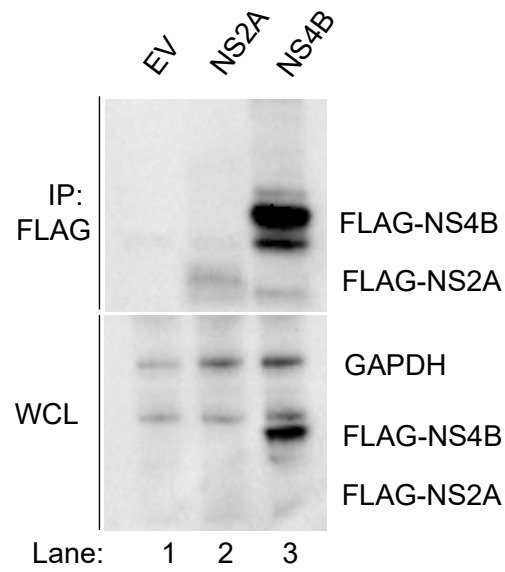


**Figure S1.** (a) Amino acid alignment of INMI1 KU991811 NS4B and other ZIKV strains with (b) percentage identity matrix. Amino acid sequence aligned were INMI1 (GenBank KU991811.1), FSS13025 (Uniprot ZIKVK A0A142I5B9), Z1106033 (GenBank KU312312.1), PRVABC-59 (Gen Bank KX377337.1), Dakar-41525 (GenBank MG758786.1), MR766 (Uniprot ZIKV sp|Q32ZE1|), 10087PF (Uniprot ZIKVF sp|A0A024B7W1|).

(a)	Viral strain	Identity, %
	DEN26 sp P29990	52.4
	DEN27 sp P29991	52.4
	DEN2N sp P14340	53.3
	DEN28 sp P14337	53.3
	DEN2J sp P07564	52.9
	DEN2P sp P12823	53.7
	DEN2Q sp Q9WDA6	53.3
	DEN4H sp Q2YHF2	49.6
	DEN4P sp Q58HT7	50.0
	DEN4T sp Q2YHF0	49.6
	DEN4D sp P09866	49.6
	DEN4S sp Q5UCB8	49.6
	DEN1S sp P33478	51.4
	DEN1W sp P17763	51.0
	DEN1B sp P27909	51.0
	DEN3M sp Q6YMS3	51.6
	DEN3S sp Q6YMS4	51.6
	DEN3I sp Q5UB51	50.8
	ZIKV KU991811.1	100.0
	ZIKVF sp A0A024B7W1	100.0
	ZIKV sp Q32ZE1	94.8
	SPOV A0A1I9RZV1	82.1
	SPOV A0A1I9RZV2	82.1
	SPOV A0A2L1GGB4	81.3
	SPOV  C8XPB6	82.1
	KUNV sp P14335	43.0
	WNV9 sp Q9Q6P4	43.4
	WNV sp P06935	42.4
	USUV sp Q5WPU5	45.4
	JEV1 sp P27395	47.2
	JEV5 sp P19110	47.2
	JEVJ sp P32886	46.8
	YFVU sp Q1X880	32.9
	YFVE sp Q074N0	33.3
	YFVN sp Q1X881	33.7
	YFVT sp Q9YRV3	33.5
	YFVF sp Q89277	33.5
	YFVI sp Q98803	33.1
	YFVC sp Q6J3P1	33.1
	YFV1 sp P03314	32.2
	YFVA sp Q6DV88	33.1
	POWVL sp Q04538	27.1
	LGTV LP21 sp P29837	27.1
	TBEVS sp P07720	26.0
	TBEVH sp Q01299	27.1
	TBEVW sp P14336	27.1

(b)	Viral strain	Identity, %
	ZIKV KU991811.1	100.0
	DEN2P sp P12823	53.7
	DEN26 sp P29990	52.9
	DEN27 sp P29991	52.9
	DEN2Q sp Q9WDA6	52.9
	DEN2N sp P14340	52.9
	DEN28 sp P14337	52.9
	DEN2J sp P07564	52.0
	DEN1S sp P33478	49.2
	DEN3M sp Q6YMS3	48.8
	DEN3S sp Q6YMS4	48.8
	DEN3I sp Q5UB51	48.8
	DEN1W sp P17763	48.4
	DEN1B sp P27909	48.4
	DEN4P sp Q58HT7	47.5
	DEN4S sp Q5UCB8	46.7
	DEN4T sp Q2YHF0	46.7
	DEN4H sp Q2YHF2	46.7
	DEN4D sp P09866	46.7

**Figure S2.** Phylogenetic analysis of NS4B. Amino acid identity matrix of (a) entire NS4B protein and (b) partial NS4B<sub>1-125</sub>.



**Figure S3.** Immunoprecipitation of FLAG-tagged NS2A and NS4B using anti-FLAG magnetic beads (IP:FLAG); immunoprecipitated proteins were detected by Western blot with antibodies to FLAG. The presence of transfected protein in whole cell extracts (WCE) was verified by detection with the corresponding antibody.