

Table S1. The primers of RACE

Name	Primer sequences ¹	
10×UPM	CTAATACGACTCACTATAGGGCAAGCAGTGGTATCAACGCAGAG T	
CLBV2-5UTR-R	<u>GATTACGCCAAGCTT</u> CATAACTACGGAATCGATC	} GSP
CLBV2-5UTR-R1	CCCTTCTCTCCACCTCAACAACCAGCG	
CLBV2-3UTR-F	<u>GATTACGCCAAGCTT</u> GGATCAAGGAGTACATCAGACA	
CLBV2-3UTR-F1	GGCGGGTGCTGAGGCGGAAGAT	
M13-F	CAGGGTTTTCCCAGTCACG	
M13-R	GAGCGGATAACAATTTTCACAC	
CLBV2-RdRp-det-F	GAAGATAGTGTCAATGCATTTG	
CLBV2-RdRp-det-R	CCAGCCACAAAACATCGGGCTC	
MaTLV-RdRp-det-F	AGCGACAAAAATTTTCTTCATCC	
MaTLV-RdRp-det-R	CGCGCGAAGGAAAAAACCTACG	
MaNLV-RdRp-det-F	GTATCACCAAGGTAATTCTTACC	
MaNLV-RdRp-det-R	ATCACCGCTCACCAAGAGAACG	

¹ the 15 bp overlaps with the pUC19 vector.

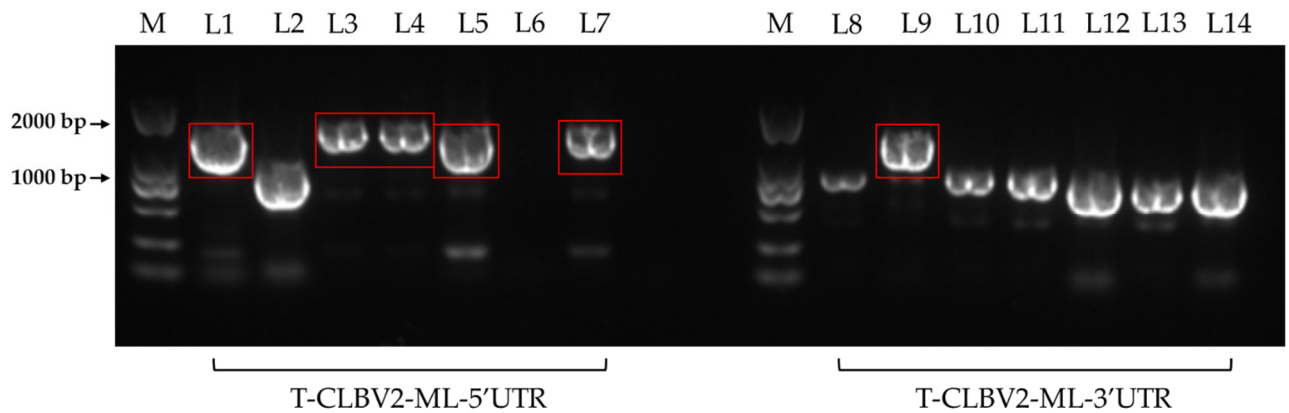


Figure S1. The detection of positive clones; M was Marker, Lane 1-7 were the positive clones of 5' terminal sequences, Lane 8-14 were the positive clones of 3' terminal sequences; The stripes in the red boxes maybe the destination stripe.

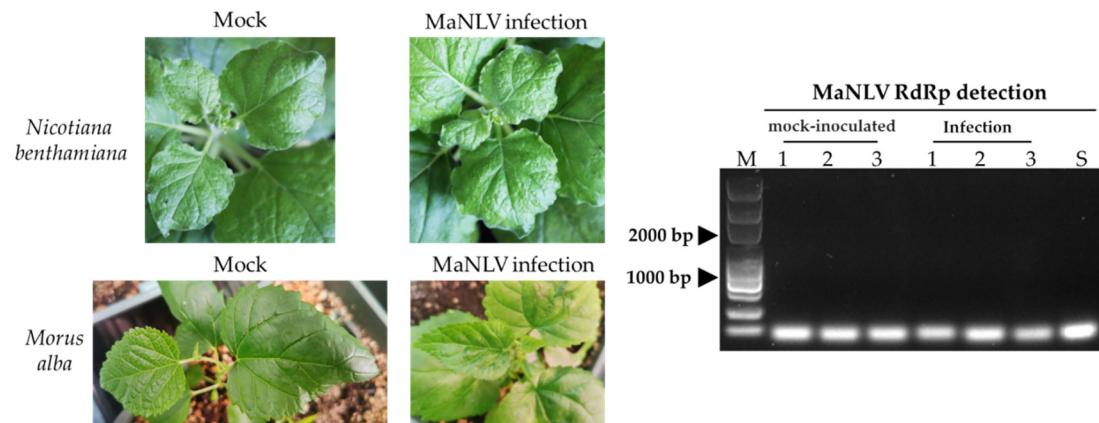


Figure S2. Symptoms on leaves of *Nicotiana benthamiana* and *Morus alba* infected by MaNLV, and virus detection. Lane 1 and 2, *N. benthamiana*; Lane 3, *Morus alba*; m1-3, mock-inoculated leaves; i1-3, the infection of leaves; S, sample cDNA.