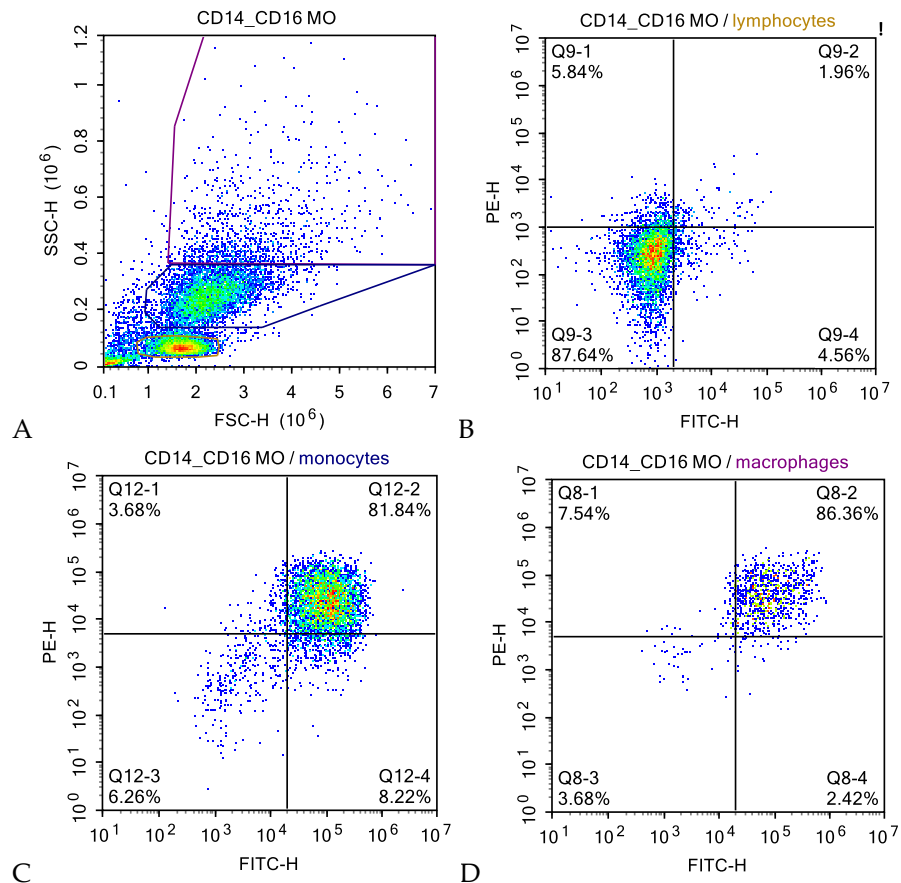
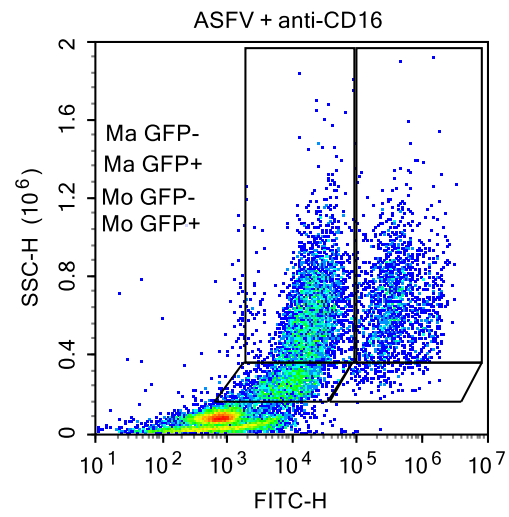


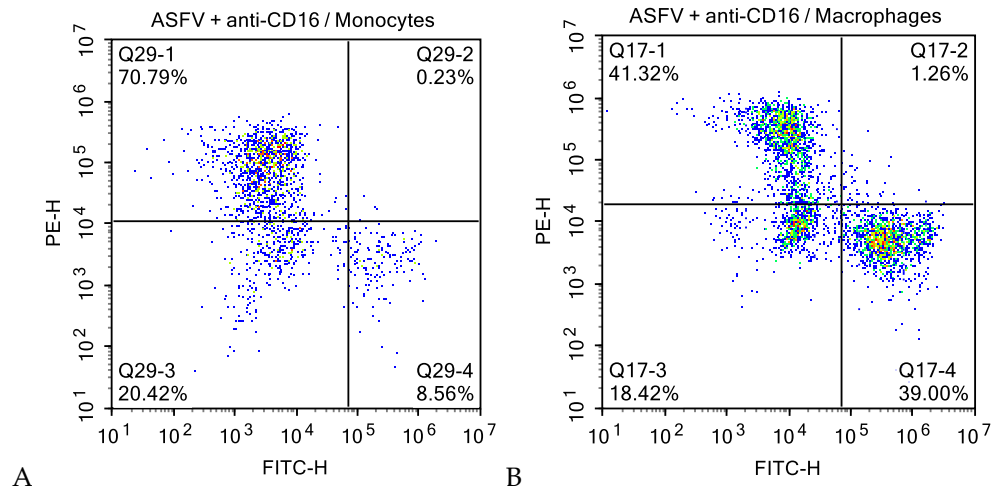
Supplementary Materials:



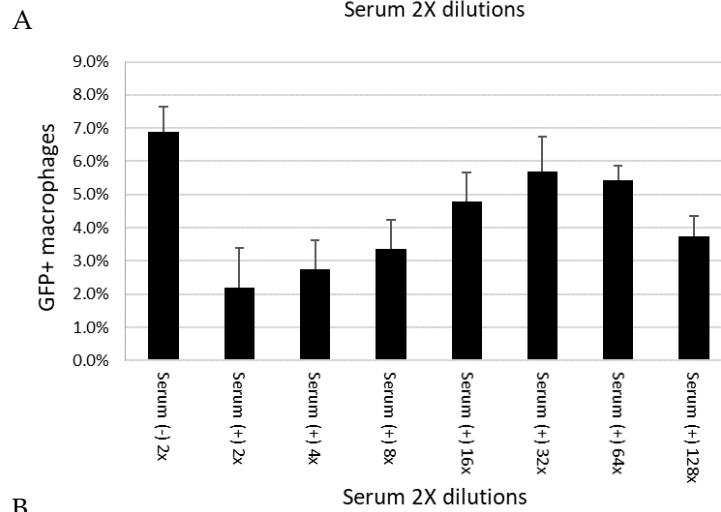
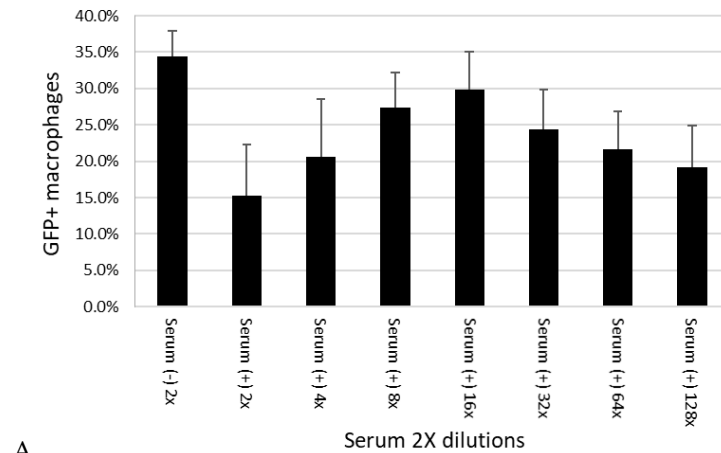
Supplemental Figure S1. Flow cytometry of non-infected adherent PBMC: (A) SSC-H vs FSC-H plot of adherent PBMC gated on lymphocytes, monocytes and macrophages; (B) CD14 (FITC) and CD16 (PE) staining of lymphocytes; (C) CD14 (FITC) and CD16 (PE) staining of monocytes; and (D) CD14 (FITC) and CD16 (PE) staining of macrophages



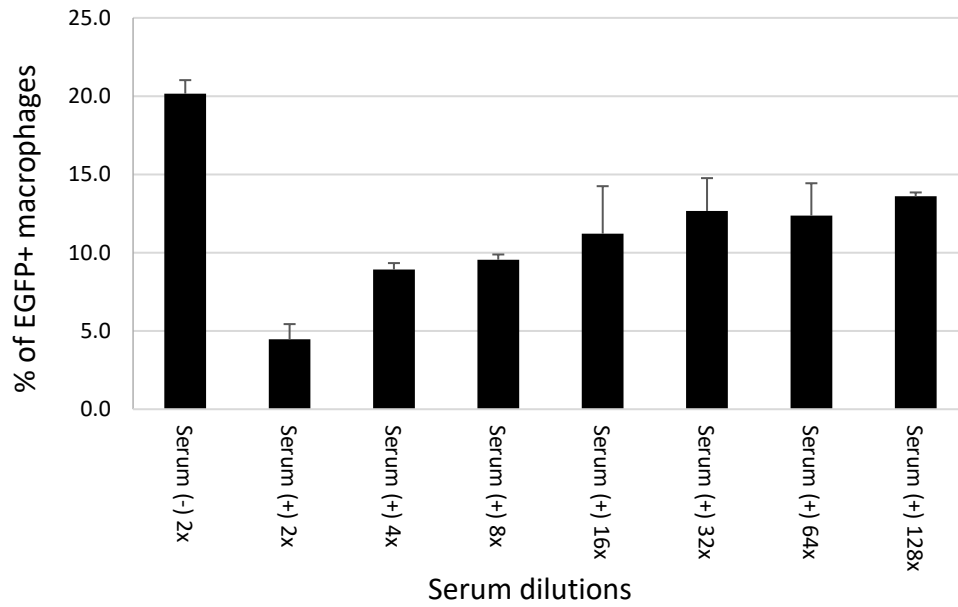
Supplemental Figure S2. The cell distribution on the SSC vs FITC (EGFP signal) plot of adherent PBMC gated on monocytes and macrophages after ASFV infection at MOI of 0.5 HAD₅₀



Supplemental Figure S3. The EGFP (FITC) vs CD16 (PE) plots of ASFV infected adherent PBMC gated on (A) monocytes and (B) macrophages



Supplemental Figure S4. The percentages of GFP+ macrophages treated with negative and hyperimmunized sera in 2X serial dilutions with culture medium as the diluent and ASFV infection at MOI of (A) 0.5 and (B) 0.05 HAD₅₀ in adherent PBMC isolated from the same donor pig



Supplemental Figure S5. The percentages of GFP+ macrophages treated with negative and hyperimmunized sera in 2X serial dilutions with a pooled negative serum as the diluents and ASFV infection at MOI of 0.5 HAD₅₀ in adherent PBMC isolated from another donor pig