

Supplementary Results

Sick animals were collected and transported to the Laboratory of Animal Diagnosis, Federal Rural University of Pernambuco, Recife/PE, symptoms were registered and the animals were photographed. As illustrated in supplementary figure 1 the animals presented with neurological symptoms.

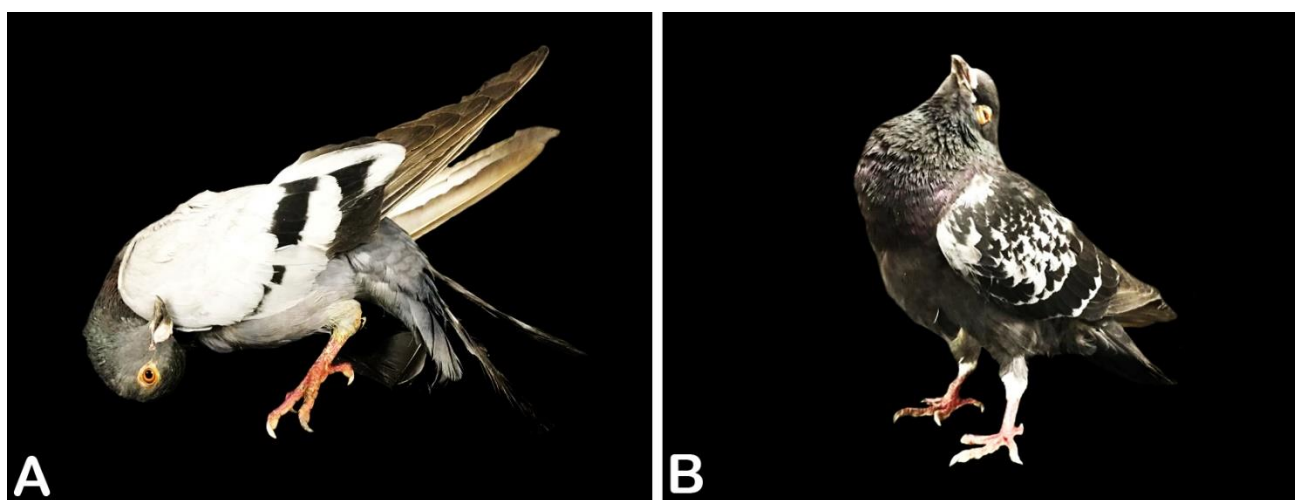


Figure S1. Free-living pigeons (*Columbia livia*) symptoms observed. (A) a bird presenting motor incoordination and torticollis (B) A bird with lethargy and opisthotonus.

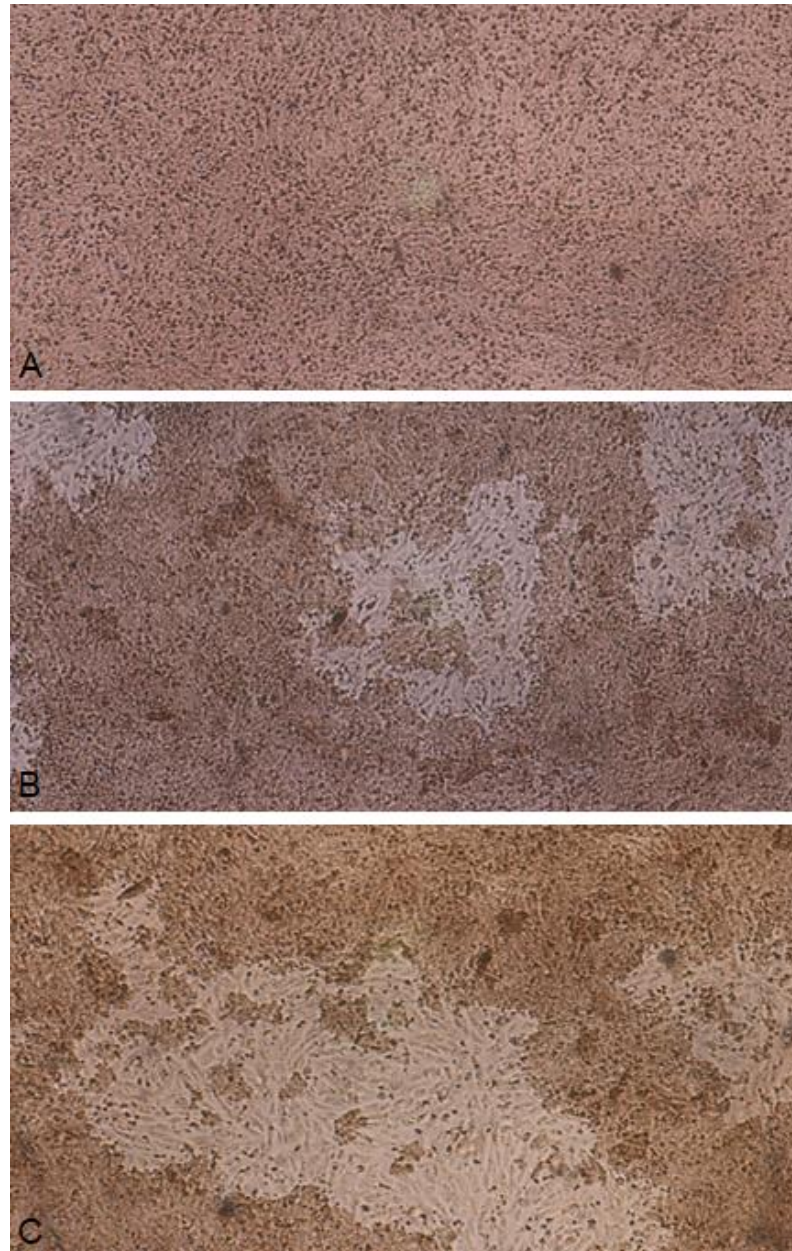


Figure S2. Cytopathic effect of NDV virus isolation on Vero E6 cell monolayers. **A** – Vero E6 cells not infected (control cells) presenting a regular morphology and absence of cell detachment; **B** – Vero E6 cells inoculated with homogenized brain samples from animal MP003 showing extensive cell detachment (suggestive of cell death) at 5 days after inoculation; **C** – Vero E6 cells inoculated with kidney samples from animal MP003 at 6 days after inoculation.