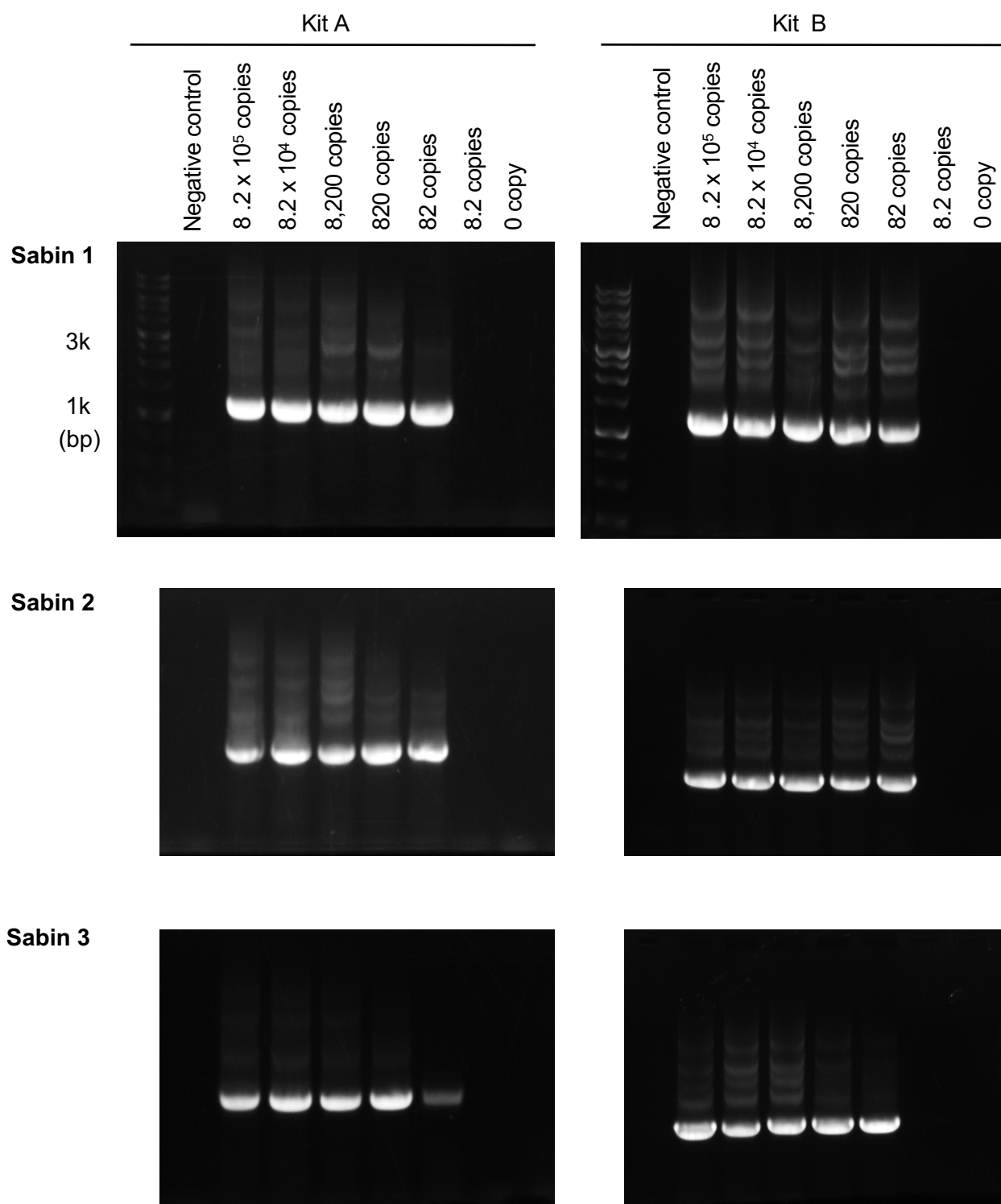
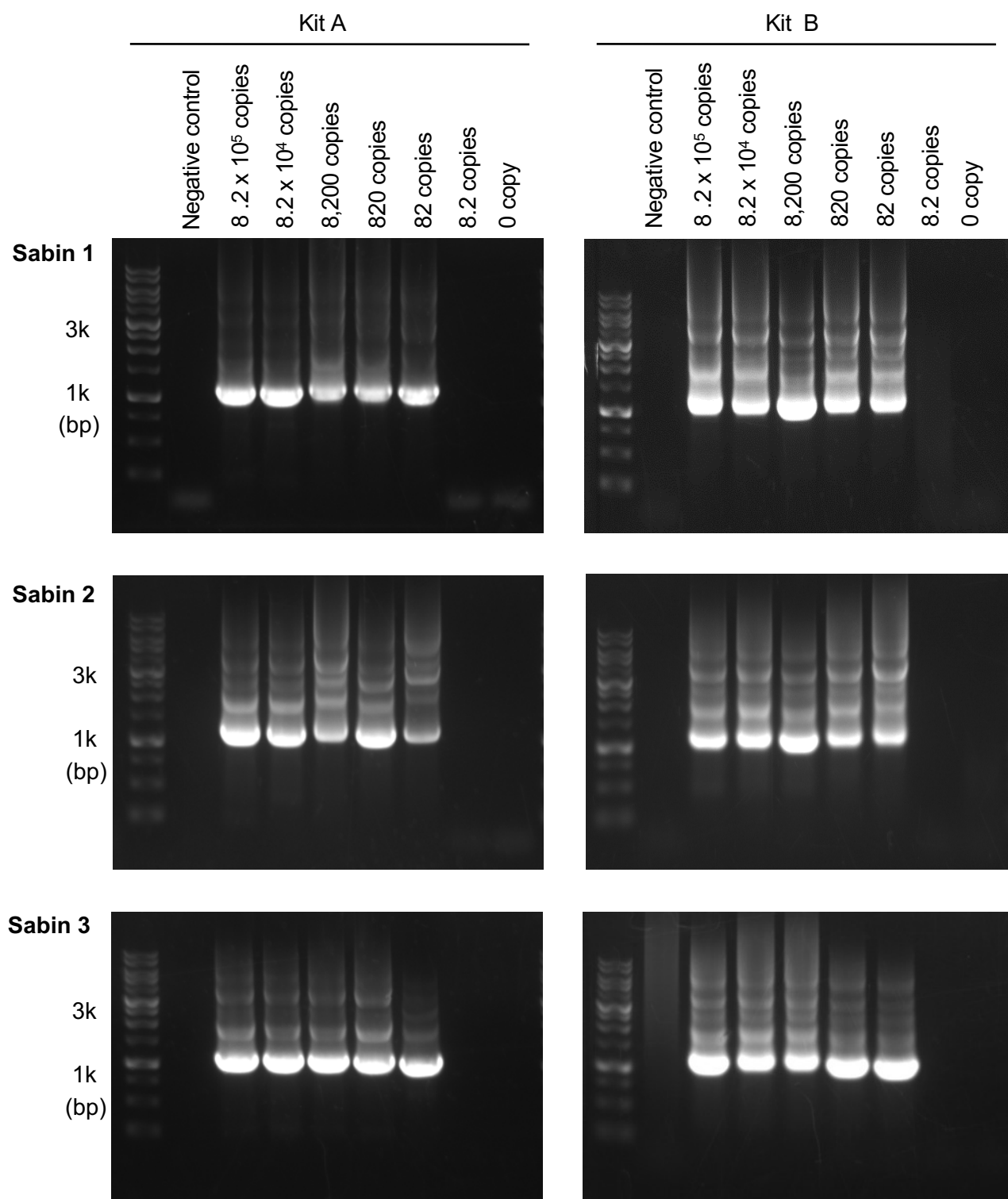


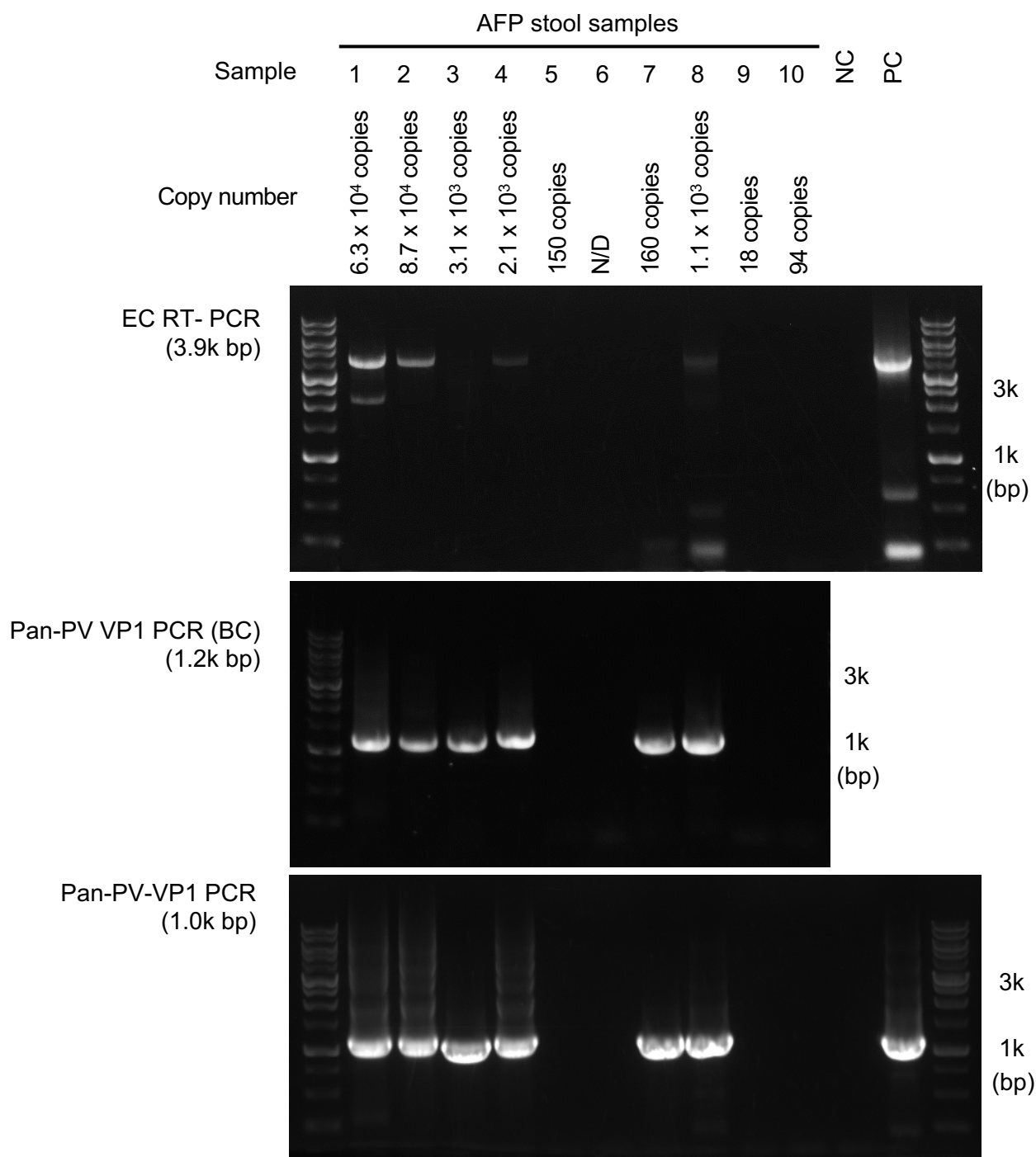
LOD of Sabin 1, 2 and 3: EC RT-PCR (3.9k bp)



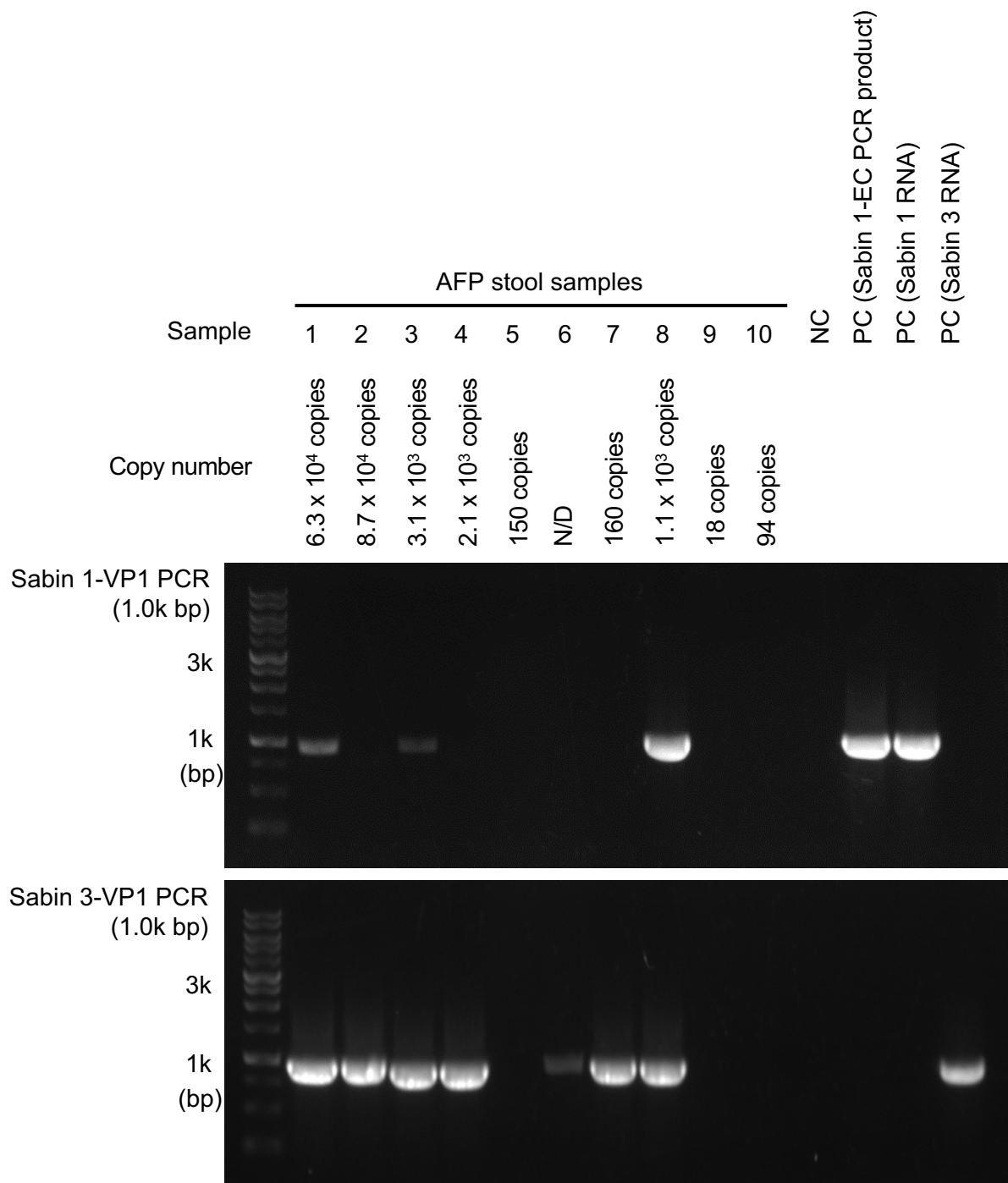
LOD of Sabin 1, 2 and 3 : Pan-PV-VP1 PCR with barcoded primers (1.2k bp)



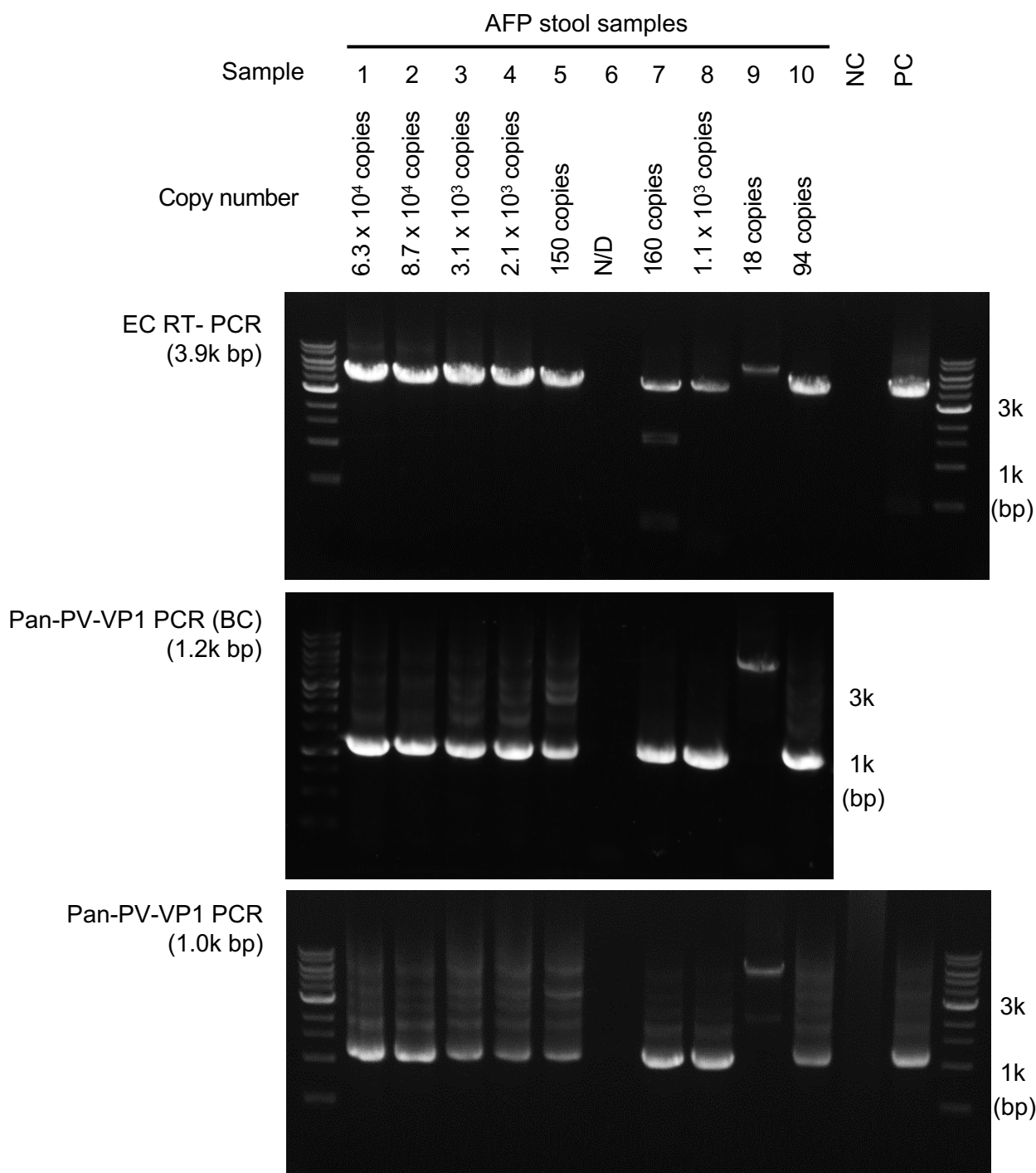
LOD of Sabin 1, 2 and 3 : Pan-PV-VP1 PCR (1.0k bp)



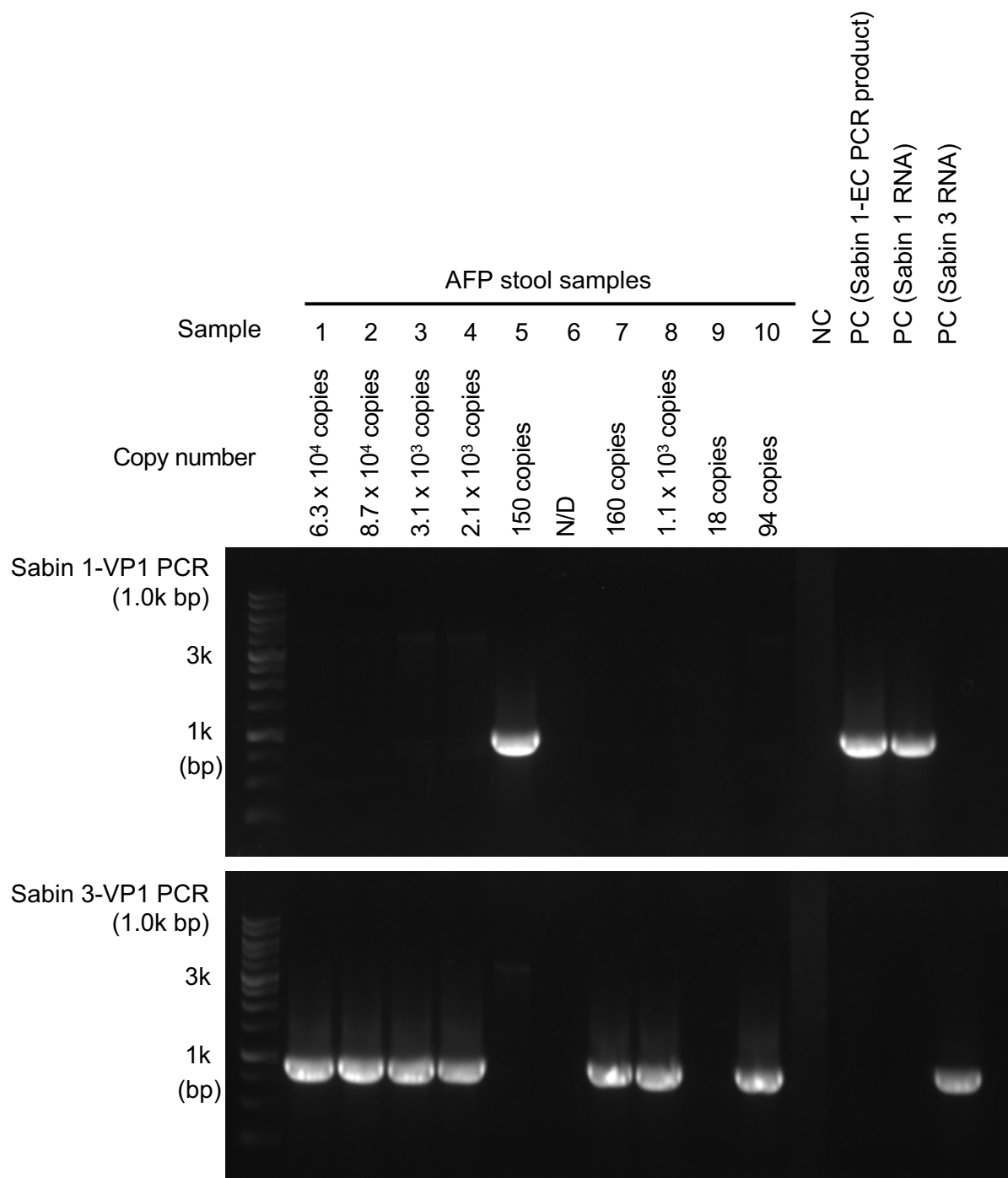
DD of PV from stool samples of AFP cases by kit A: Detection of VP1 region _1



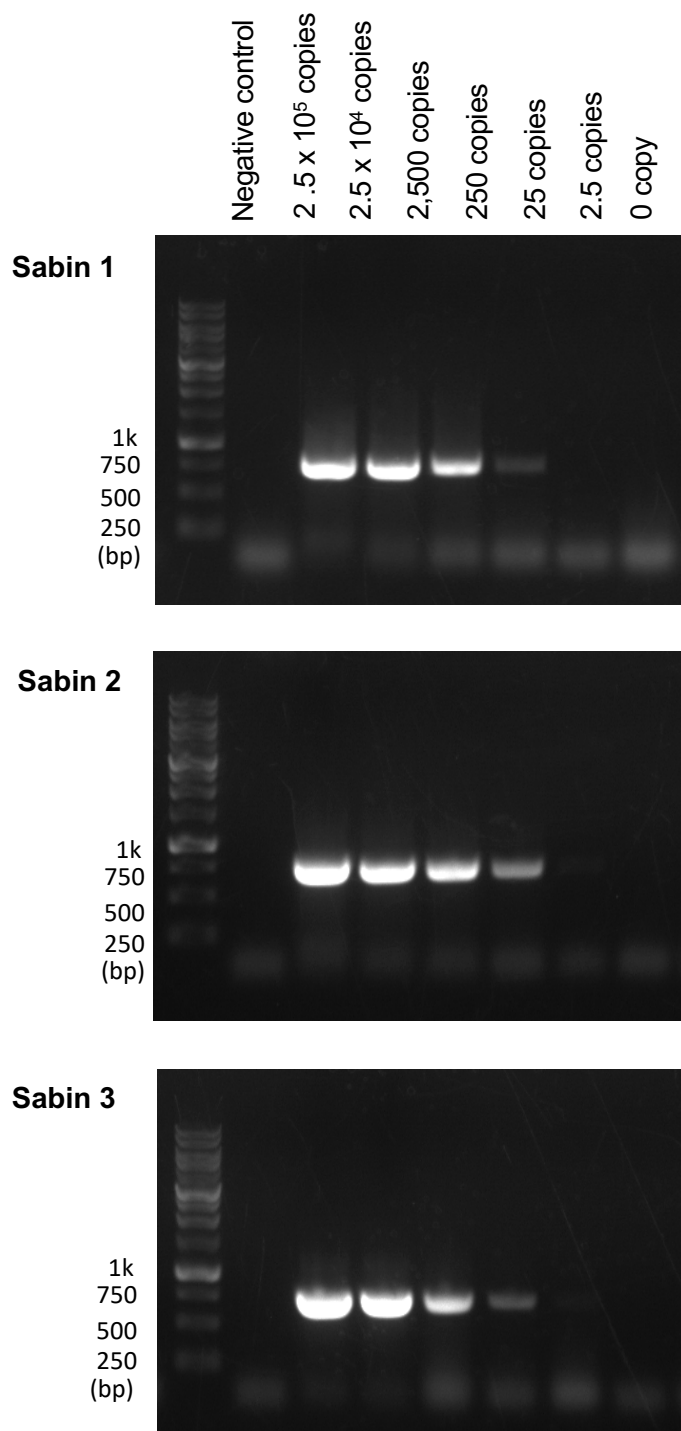
DD of PV from stool samples of AFP cases by kit A: Detection of VP1 region _2



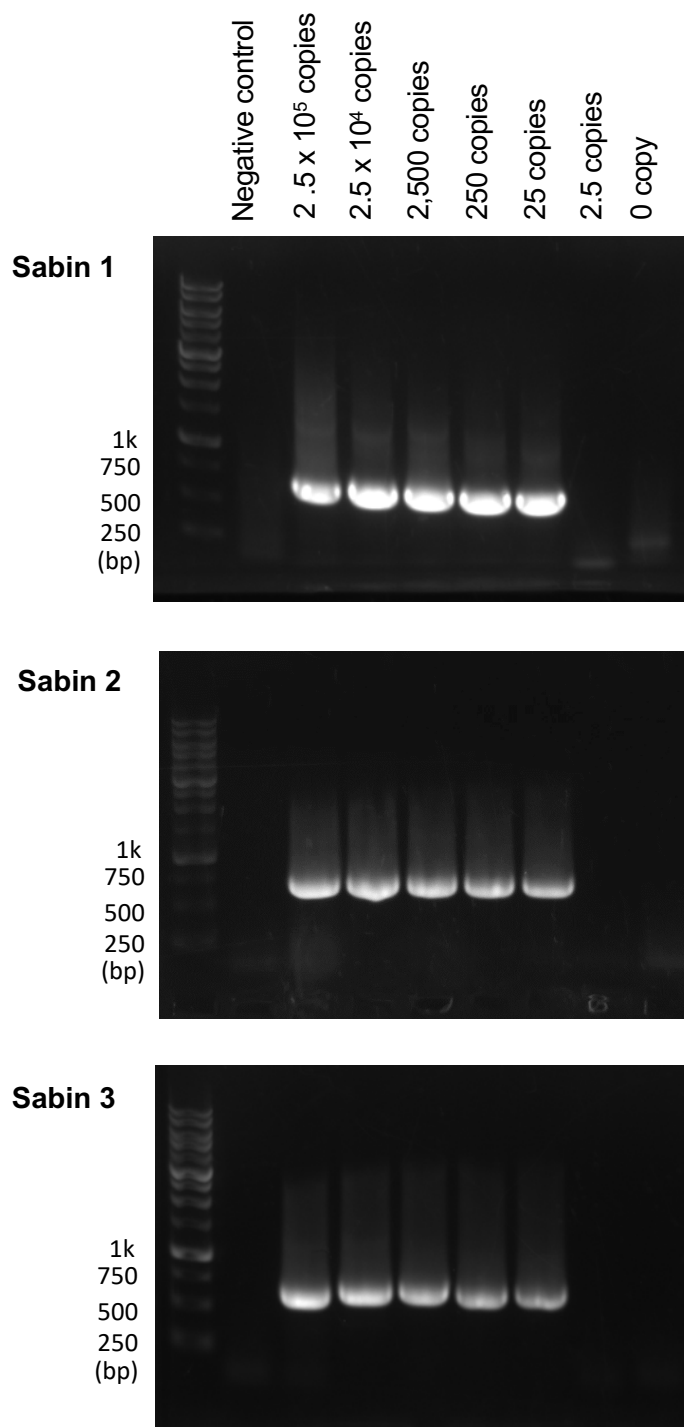
DD of PV from stool samples of AFP cases by kit B: Detection of VP1 region _1



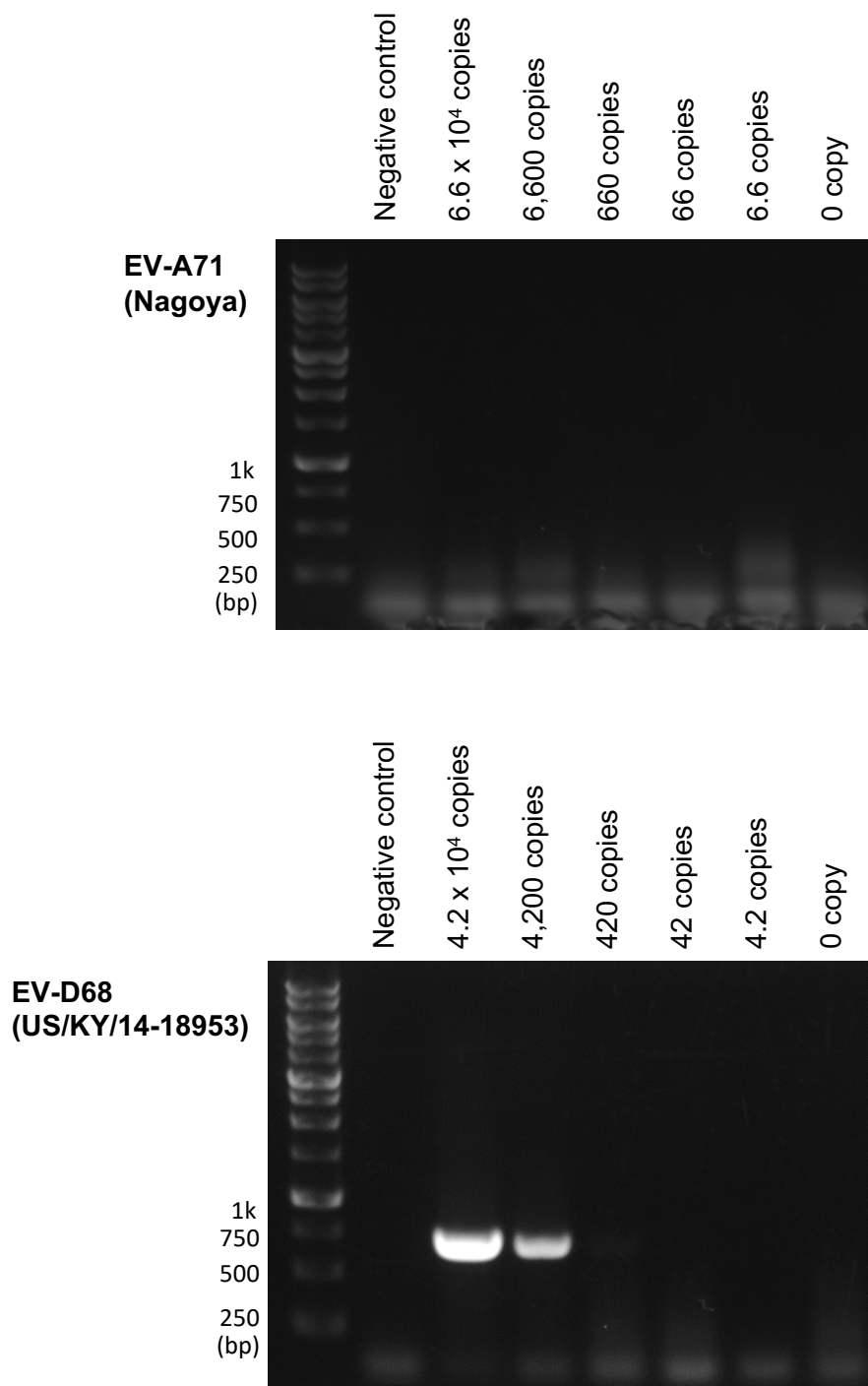
DD of PV from stool samples of AFP cases by kit B: Detection of VP1 region _2



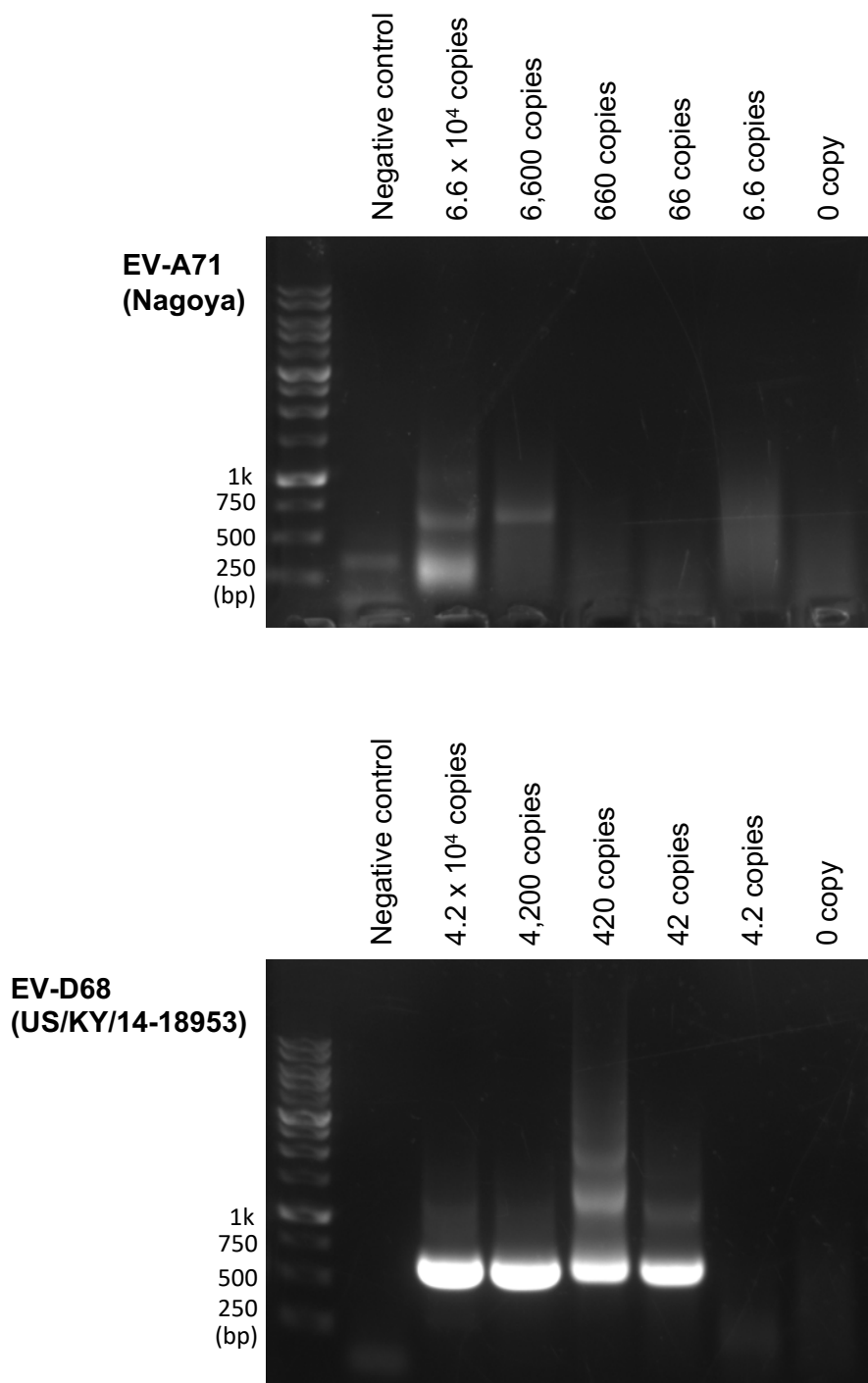
LOD of Sabin 1, 2 and 3: VP4-VP2 semi-nested RT-PCR (1st PCR: 750 bp)



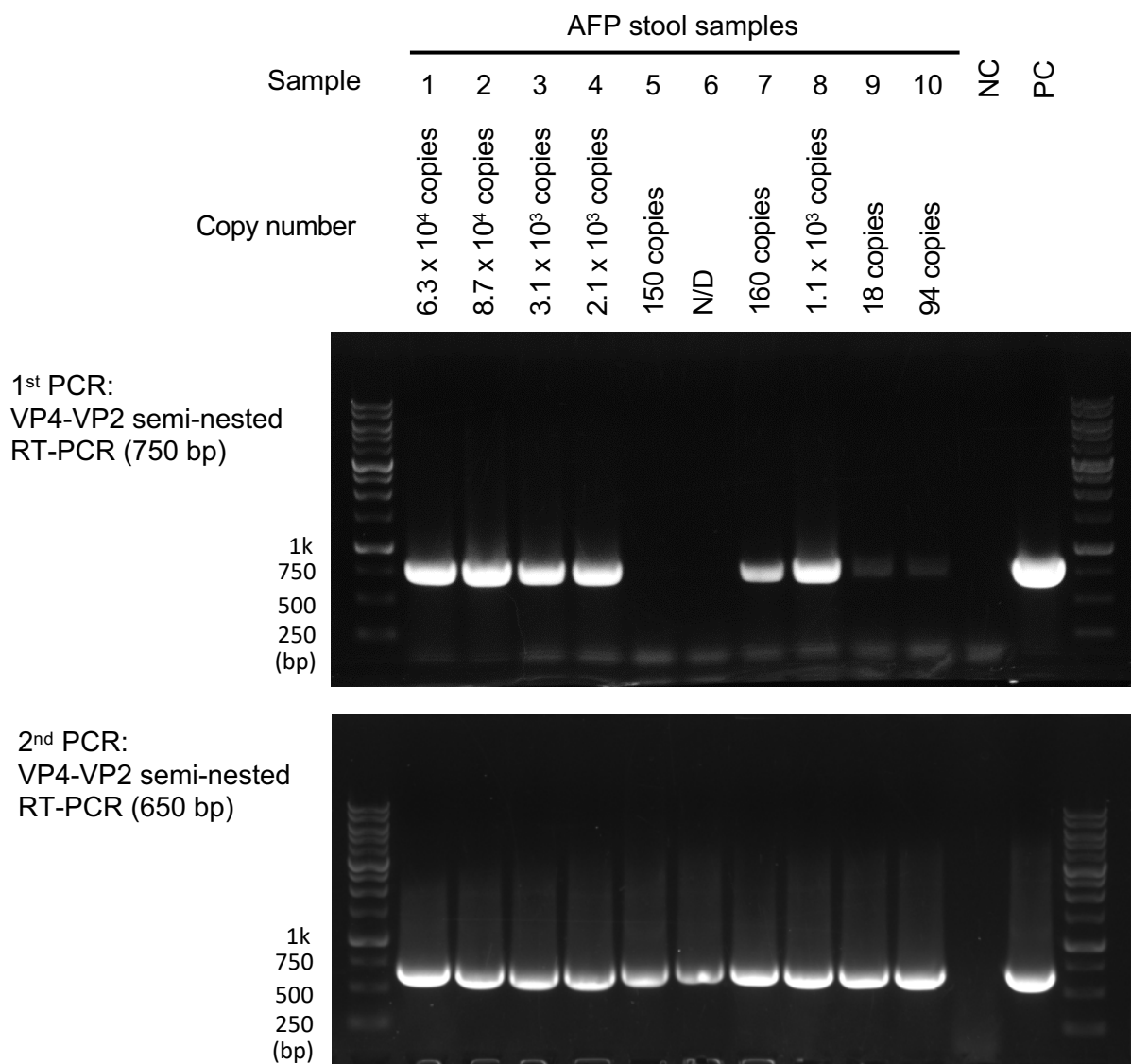
LOD of Sabin 1, 2 and 3: VP4-VP2 semi-nested RT-PCR (2nd PCR: 650 bp)



**LOD of EV-A71 (Nagoya) and EV-D68 (US/KY/14-18953)
: VP4-VP2 semi-nested RT-PCR (1st PCR: 750 bp)**



**LOD of EV-A71 (Nagoya) and EV-D68 (US/KY/14-18953)
: VP4-VP2 semi-nested RT-PCR (2nd PCR: 650 bp)**



DD of PV from stool samples of AFP cases: Detection of VP4-VP2 region