

Results of Peptides synthesis

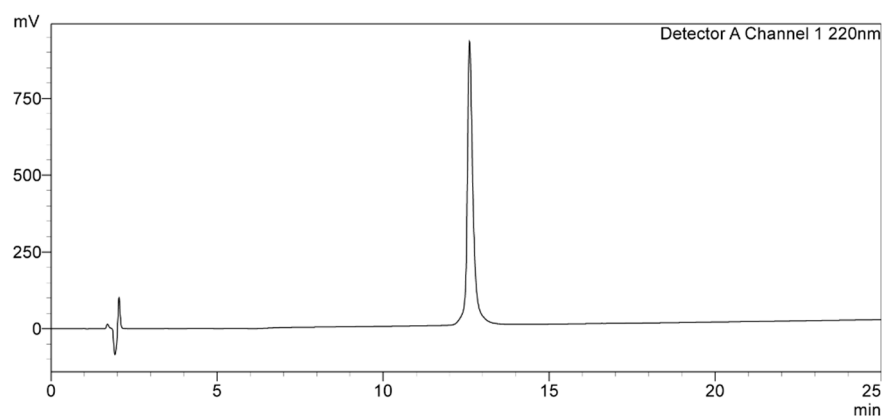


Figure S1. RP-HPLC analyzed the purity of synthesized L-V3 peptide.

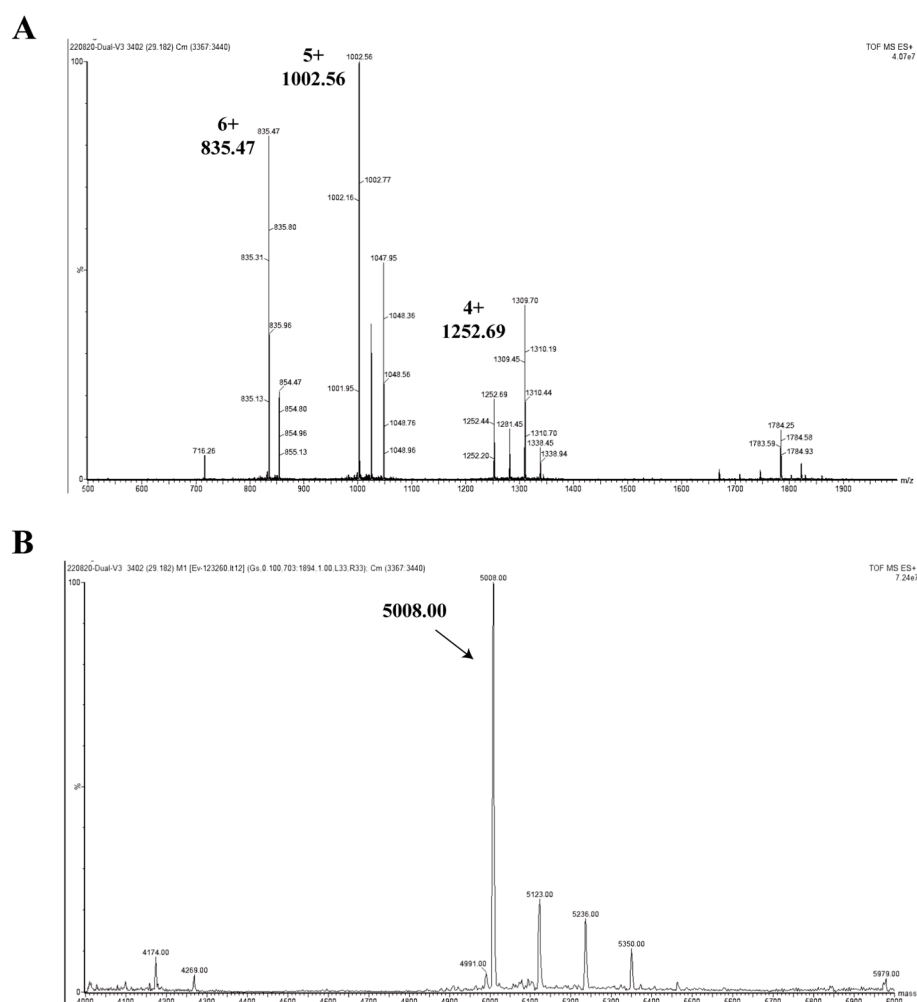


Figure S2. ESI-MS determined the molecular weight of synthesized L-V3 peptide. (A) Positive mode ESI-MS for L-V3 peptide, (B) deconvoluted ESI-MS spectra of L-V3 peptide.

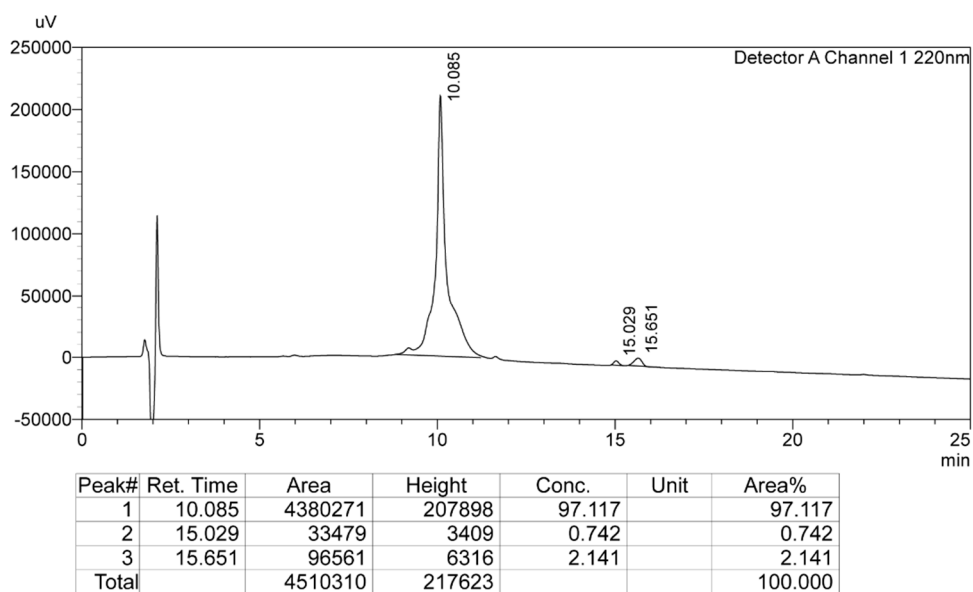


Figure S3. RP-HPLC analyzed the purity of synthesized D-V3 peptide.

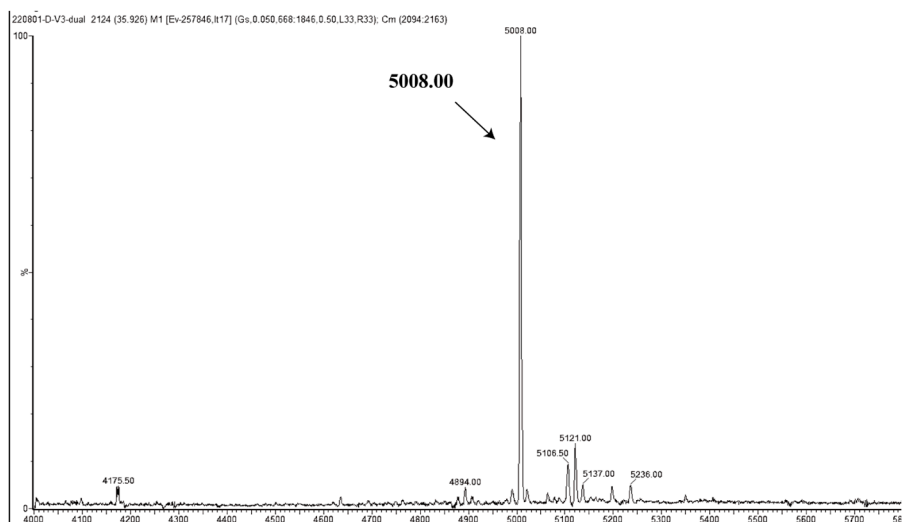
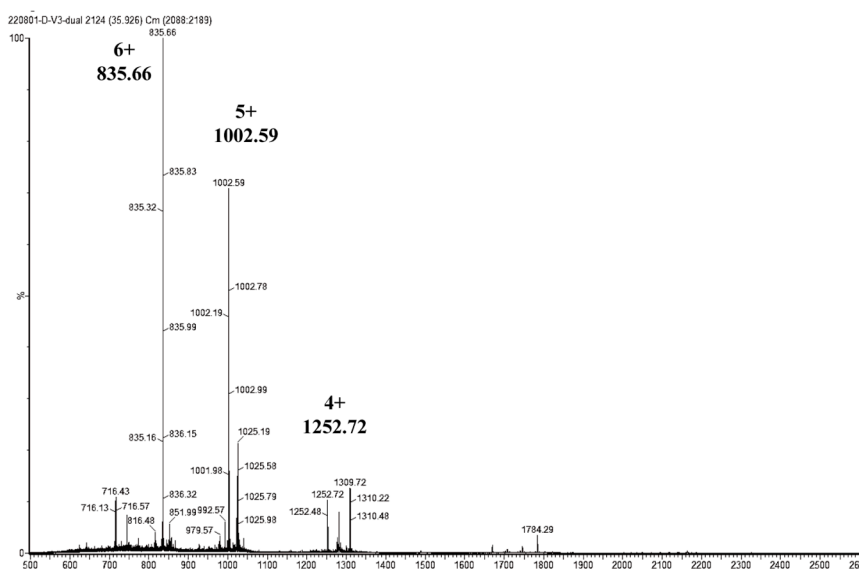


Figure S4. ESI-MS determined the molecular weight of synthesized D-V3 peptide. (A) Positive mode ESI-MS for D-V3 peptide, (B) deconvoluted ESI-MS spectra of D-V3 peptide.