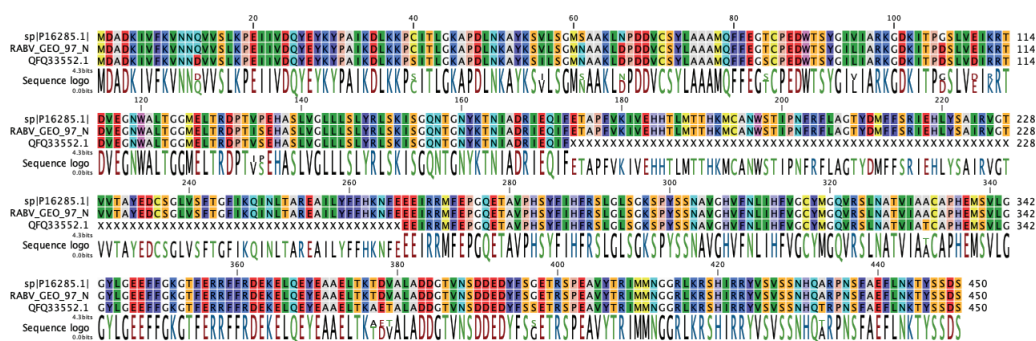
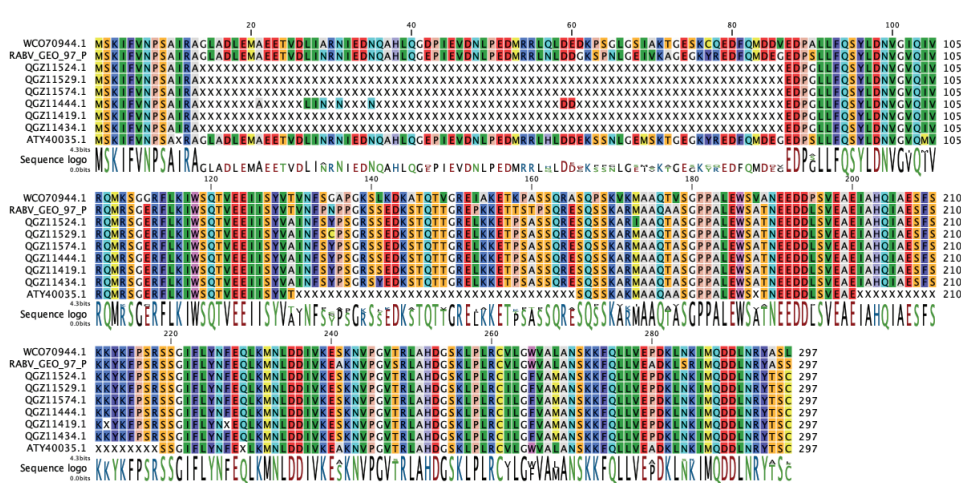


Supplementary Figure S2. PCA of ectodomain group and subregion. Principal components analysis of ectodomain groups and subregions of Georgia from which samples were collected. Points indicate score for principal components 1 and 2 and are color coded in correspondence with ectodomain group assignment and shaped by geographical origin of the sample. Vectors (blue arrows) show the loadings, indicating the weight each variable has on the principal component. Due to a vector angle close to 90° , we interpret these variables as unlikely to be correlated.

A



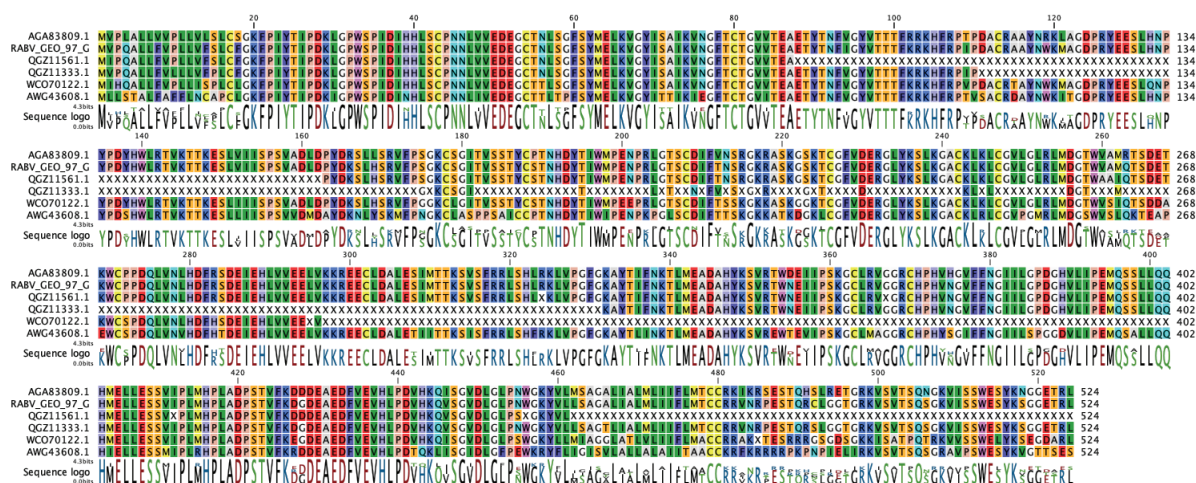
B



C



D



Supplementary Figure S3. Alignment of representative amino acid sequences from RABV protein clusters. (A) N protein. (B) P protein. (C) M protein (D) G protein.

