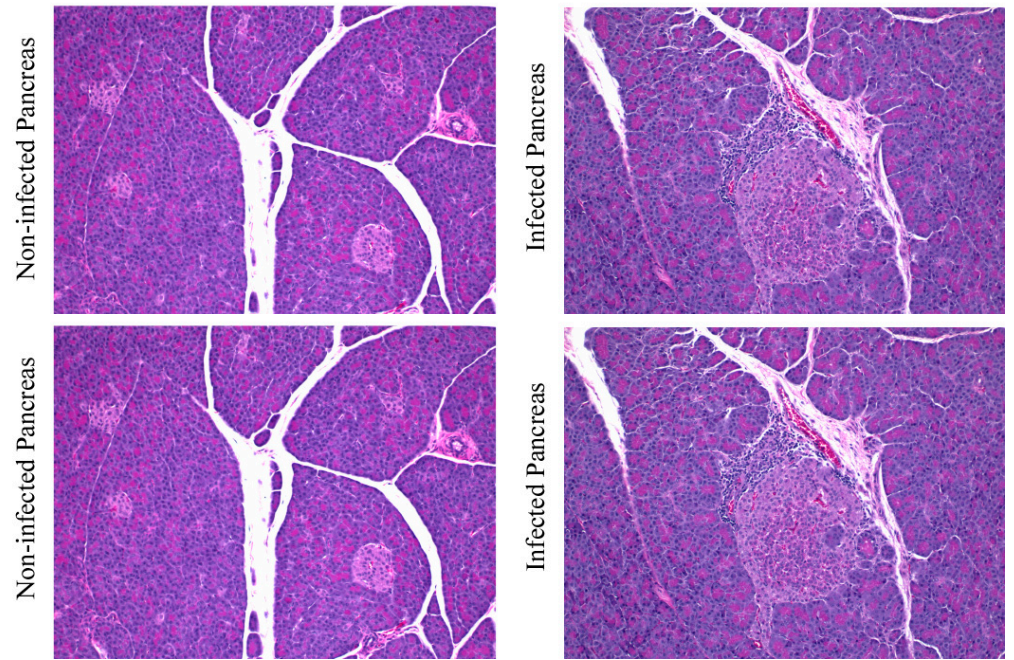


**Table S1:** List of primers and probe sequences used for ddPCR.

Oligo name	Sequence
2019-nCoV_N1-Forward	GACCCCAAAATCAGCGAAAT
2019-nCoV_N1-Reverse	TCTGGTTACTGCCAGTTGAATCTG
2019-nCoV_N1-Probe	/56-FAM/ACCCCGCAT/ZEN/TACGTTTGGTGGACC/3IABkFQ/
2019-nCoV_N2-Forward	TTACAAACATTGGCCGAAA
2019-nCoV_N2-Reverse	GCGCGACATTCCGAAGAA
2019-nCoV_N2-Probe	/56-FAM/ACAATTTGC/ZEN/CCCCAGCGCTTCAG/3IABkFQ/
RNAseP_Foward	AGATTGACCTGCGAGCG
RNAseP_Reverse	GAGCGGCTGTCTCCACAAGT
RNAseP_Probe	/56-FAM/TTCTGACCT/ZEN/GAAGGCTCTGCGCG/3IABkFQ/
ACE2 Forward	ACGGAGGCGTAAGGATTT
ACE2 Reverse	GTGTGGTAGTGGTTGGTATTG
ACE2 Probe	CGGATCAGAAATCGAAGG-AAGAA



**Figure S1.** *Lymphoplasmacytic inflammation affecting one large islet at 12 dpi.* H&E images of pancreas tissue with islets from a healthy non-infected control cat (A) vs. one SARS-CoV-2-infected cat (B) that exhibited small lymphocytes and plasma cell infiltrates disrupting the normal architecture of a large islet at 12 dpi (B). No other histopathologic findings were observed in the pancreas of infected cats.