

Supplementary Materials: Combining Machine Learning and Machine Vision to Accelerate 3D Printed Drug-Loaded Orodispersible Films

Colm S. O'Reilly, Moe Elbadawi, Neel Desai, Simon Gaisford, Abdul W. Basit and Mine Orlu

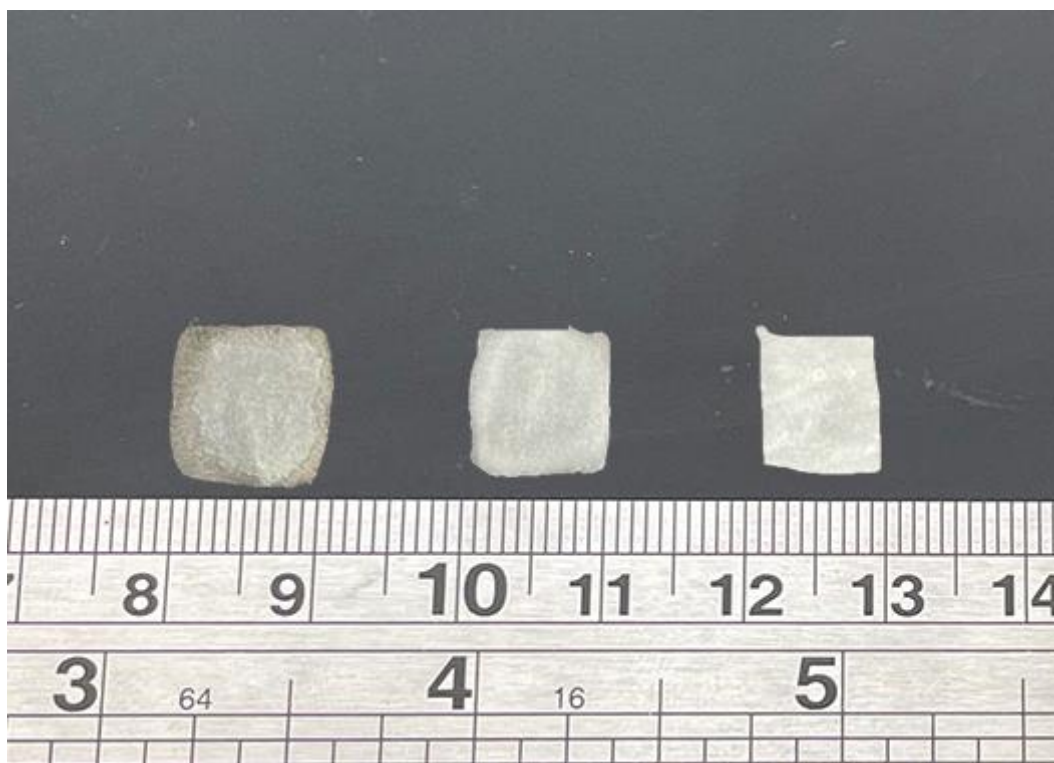


Figure S1. Representative low, medium and high-concentration drug-loaded film.

Table S1. API concentration as determined by HPLC.

Sample		API Concentration (w/w%)
Paracetamol	Low	2.05
	Medium	8.29
	High	18.51
Caffeine	Low	4.65
	Medium	7.28
	High	15.61
Theophylline	Low	3.29
	Medium	6.46
	High	14.72