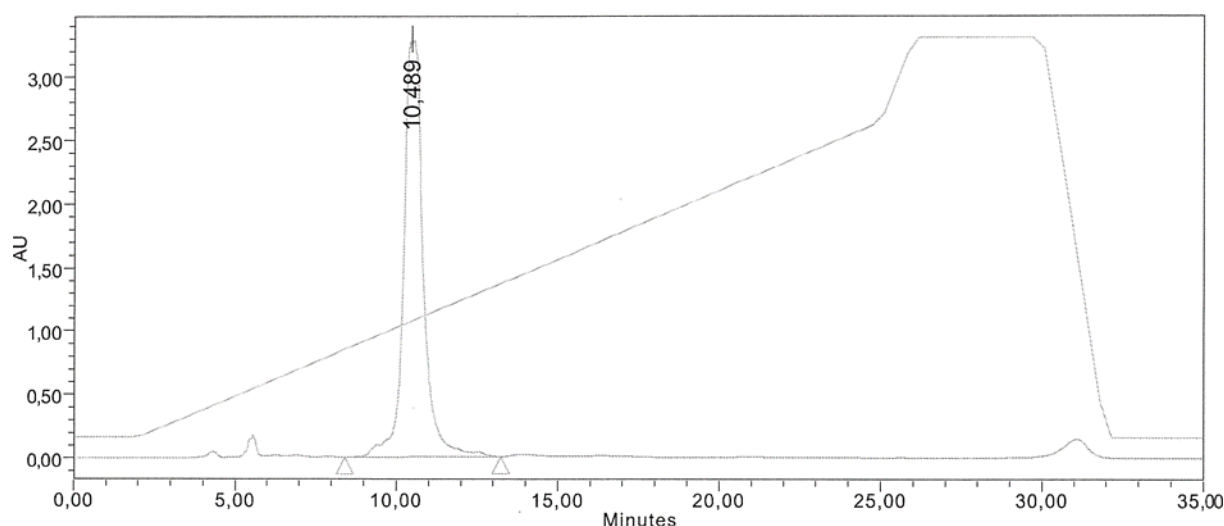
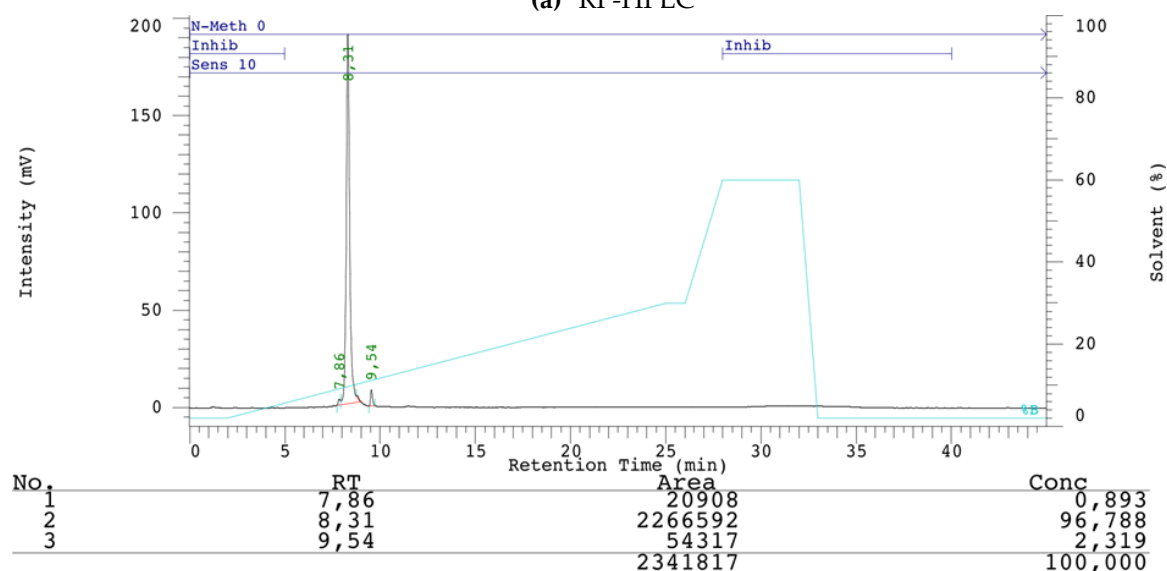


# Supplementary Materials: Polyamine–Oligonucleotide Conjugates: 2'-OMe-Triazole-Linked 1,4,7,10-Tetraazacyclododecane and Intercalating Dyes and Their Effect on the Thermal Stability of DNA Duplexes

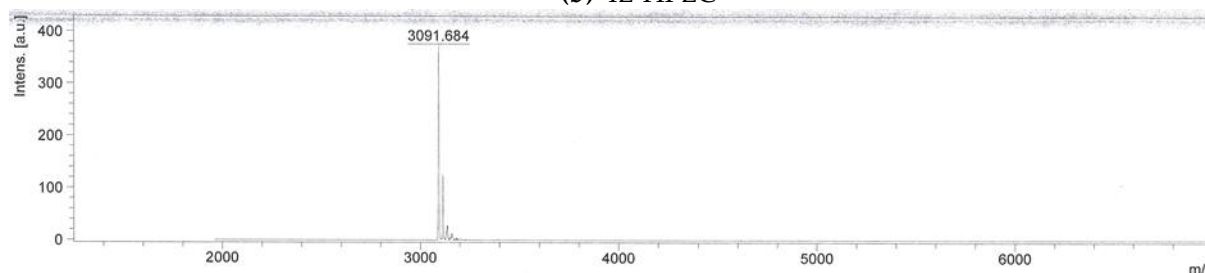
Mateusz D. Tomczyk, Mariusz Zalewski, Per T. Jørgensen, Jesper Wengel and Krzysztof Walczak



(a) RP-HPLC

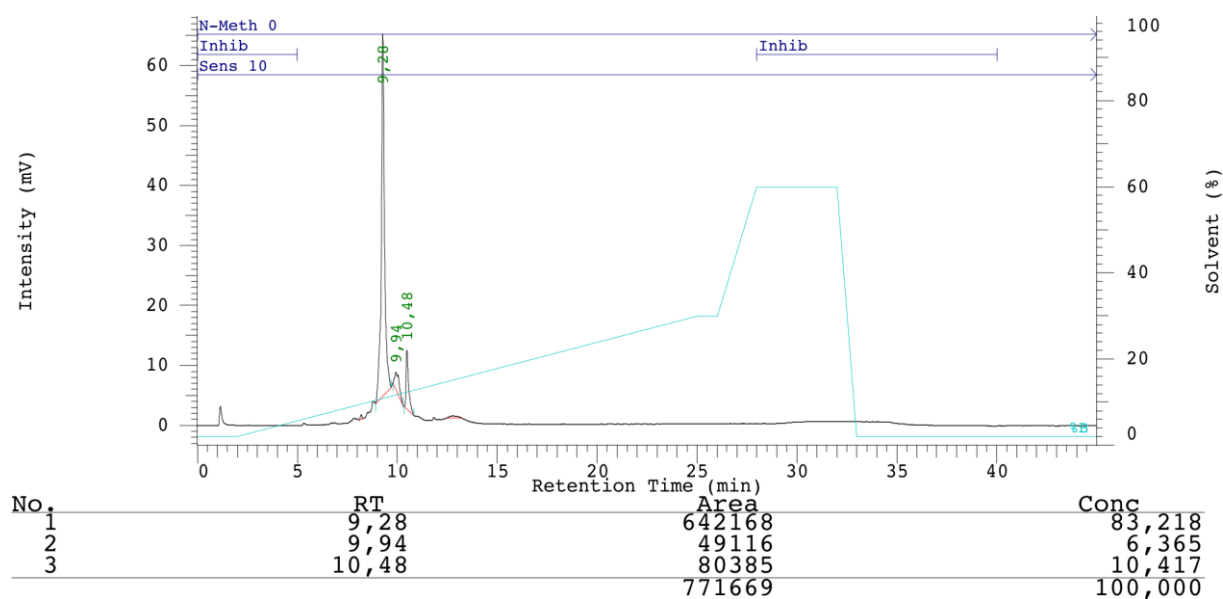


(b) IE-HPLC

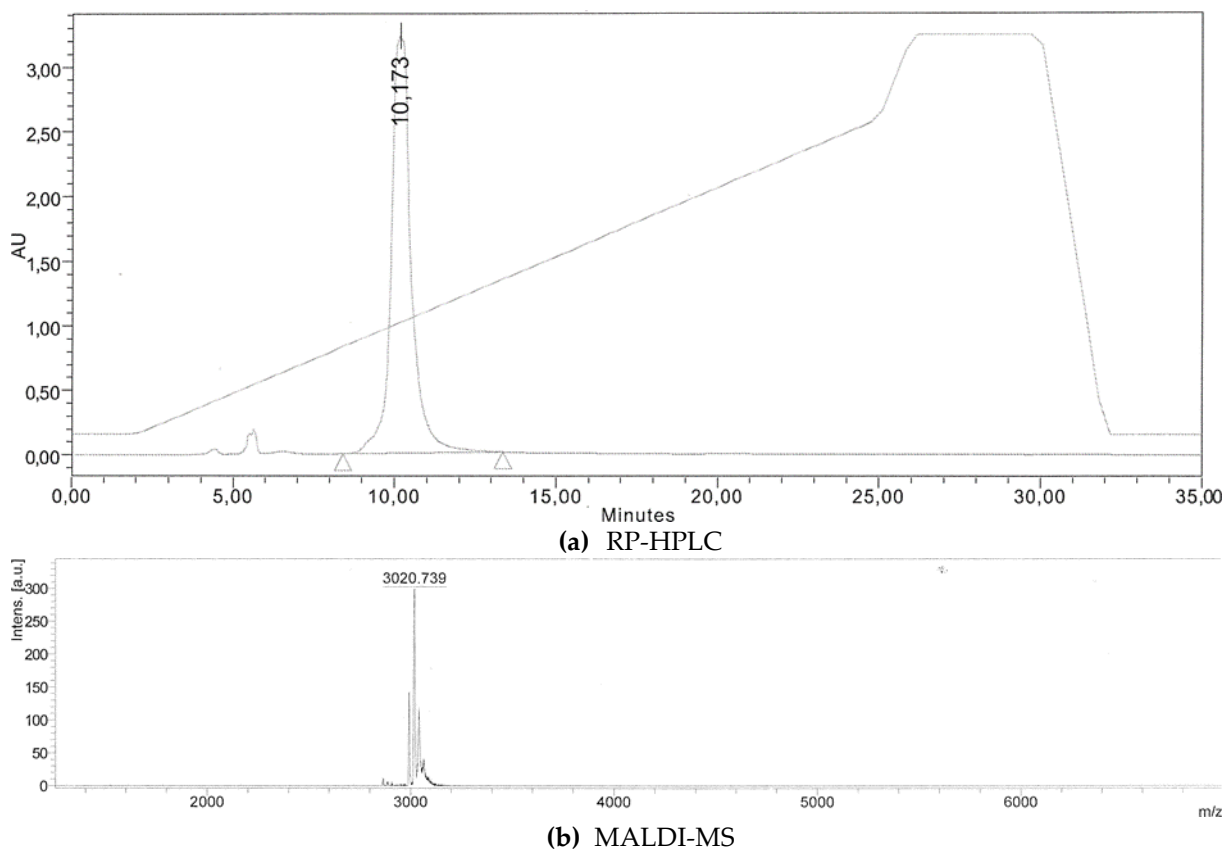


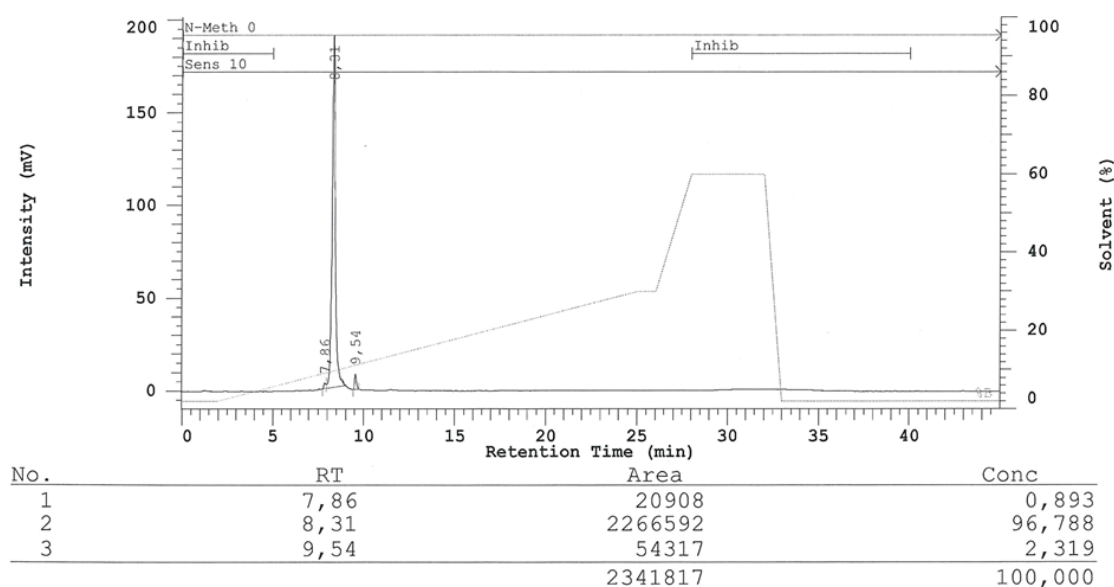
(c) MADLI-MS

**Figure S1.** (a) Semi-preparative RP-HPLC ( $t_R$  10.489 min), (b) analytical IE-HPLC ( $t_R$  8.31 min) and (c) MALDI-MS (calcd.  $m/z$  [M+H]<sup>+</sup> 3091.278) of ON13.



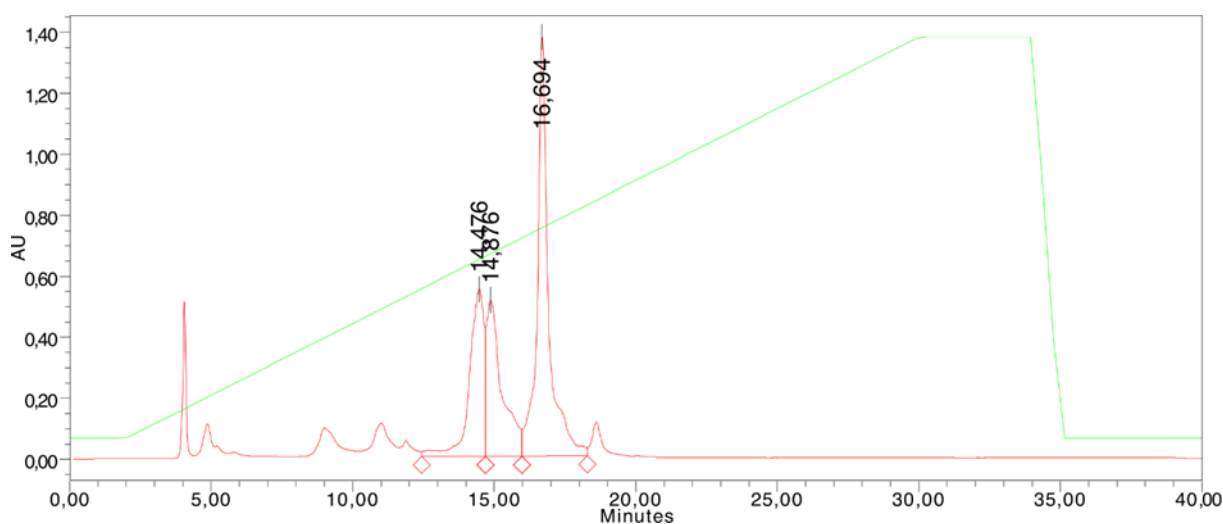
**Figure S2.** Analytical IE-HPLC of ON14 ( $t_R$  9.28 min) obtained directly from ON4, without separation of *N*-TFA protected byproducts ON7''.



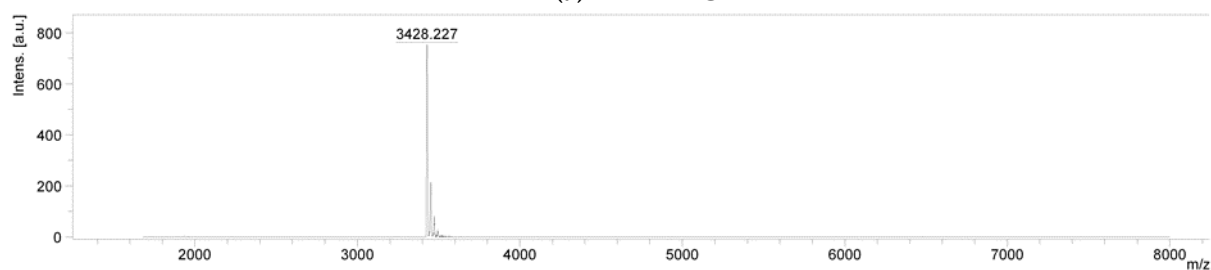


(c) IE-HPLC

**Figure S3.** (a) Semi-preparative RP-HPLC ( $t_R$  10.173 min), (b) MALDI-MS (calcd.  $m/z$   $[M+H]^+$  3020.734) of **ON14** obtained by separating a mixture of **ON7''** byproducts and their joint deprotection and (c) analytical IE-HPLC ( $t_R$  8.31 min) of **ON14**.

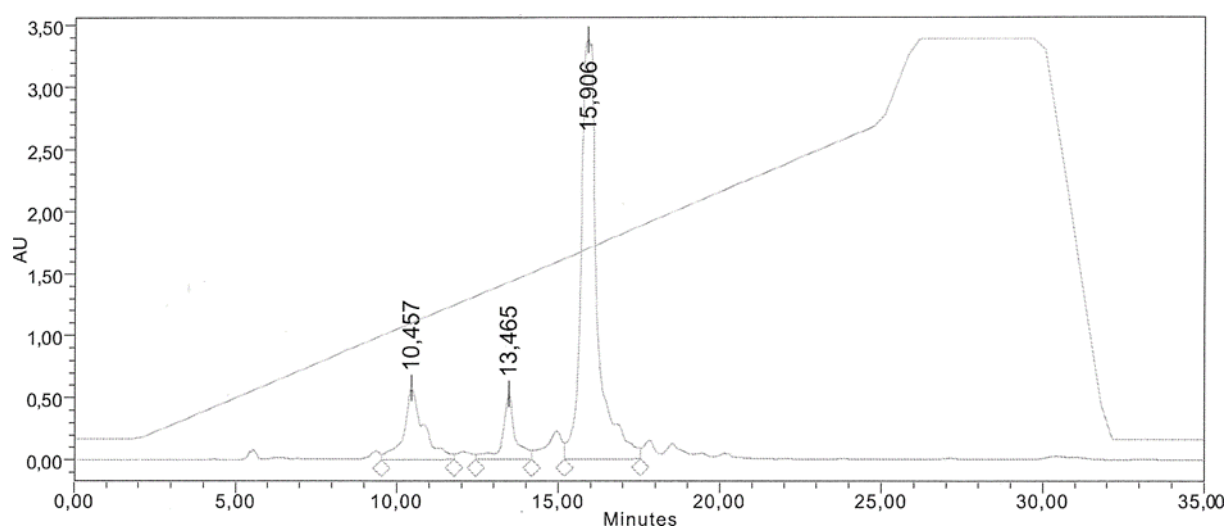


(a) RP-HPLC

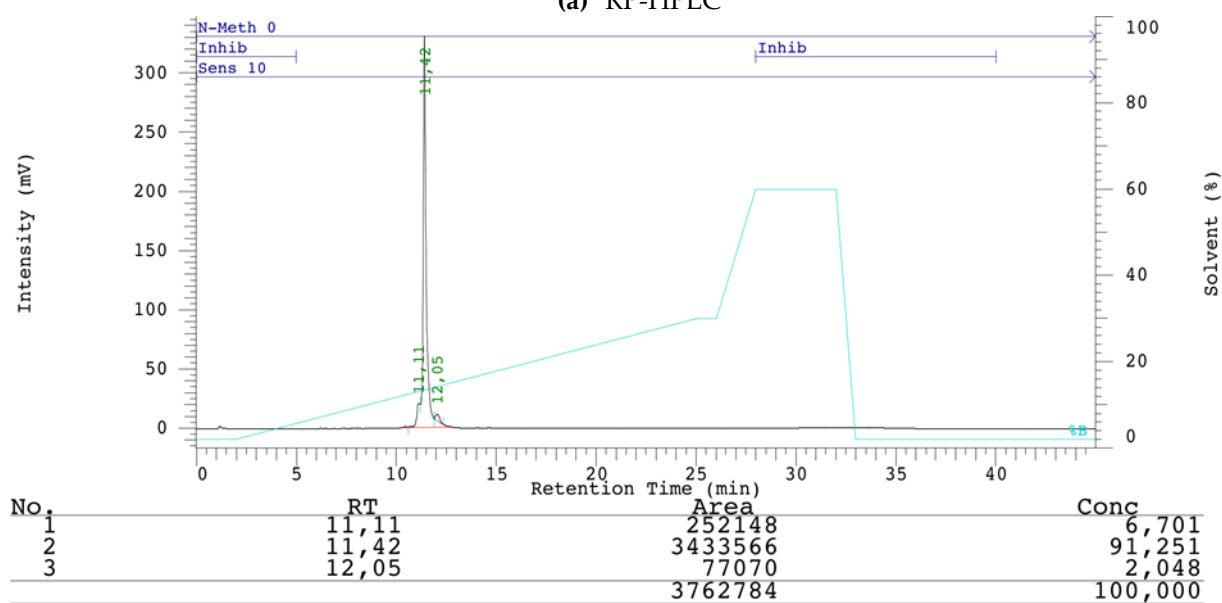


(b) MALDI-MS

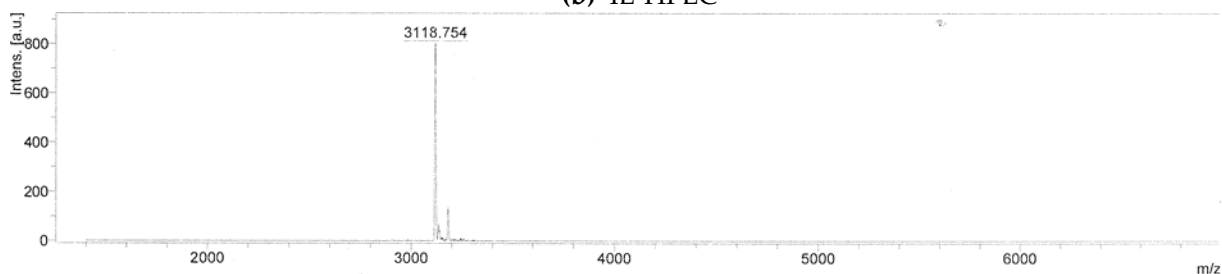
**Figure S4.** (a) Semi-preparative RP-HPLC of **ON8''** byproducts ( $t_R$  14.476, 14.876 and 16.694 min) containing cyclen moieties with a different degree of *N*-TFA protection. These fractions were collected and deprotected together to yield the final conjugate **ON15**. (b) MALDI-MS of **ON15**.



(a) RP-HPLC

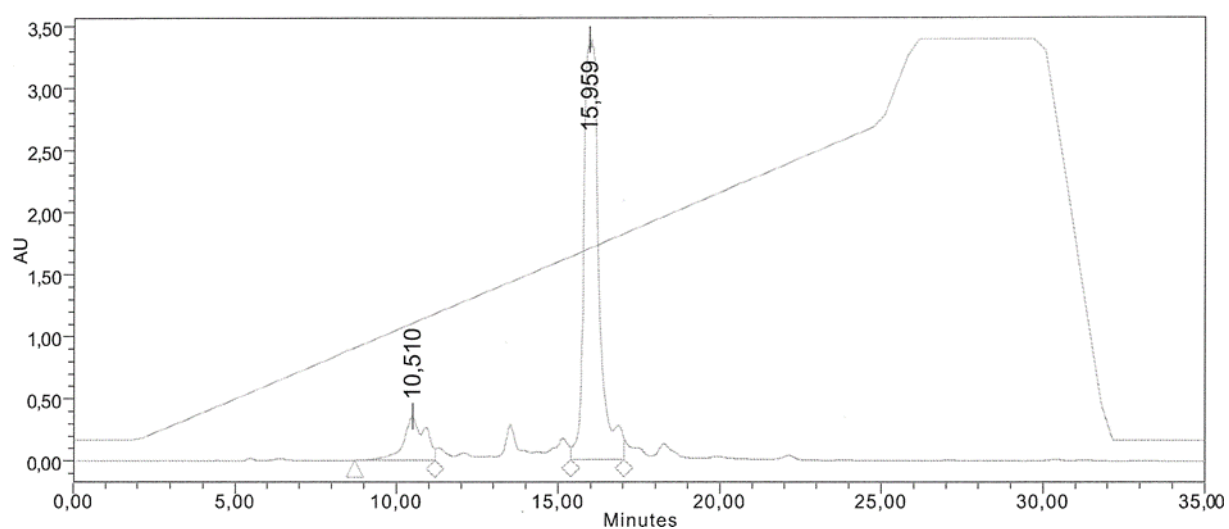


(b) IE-HPLC

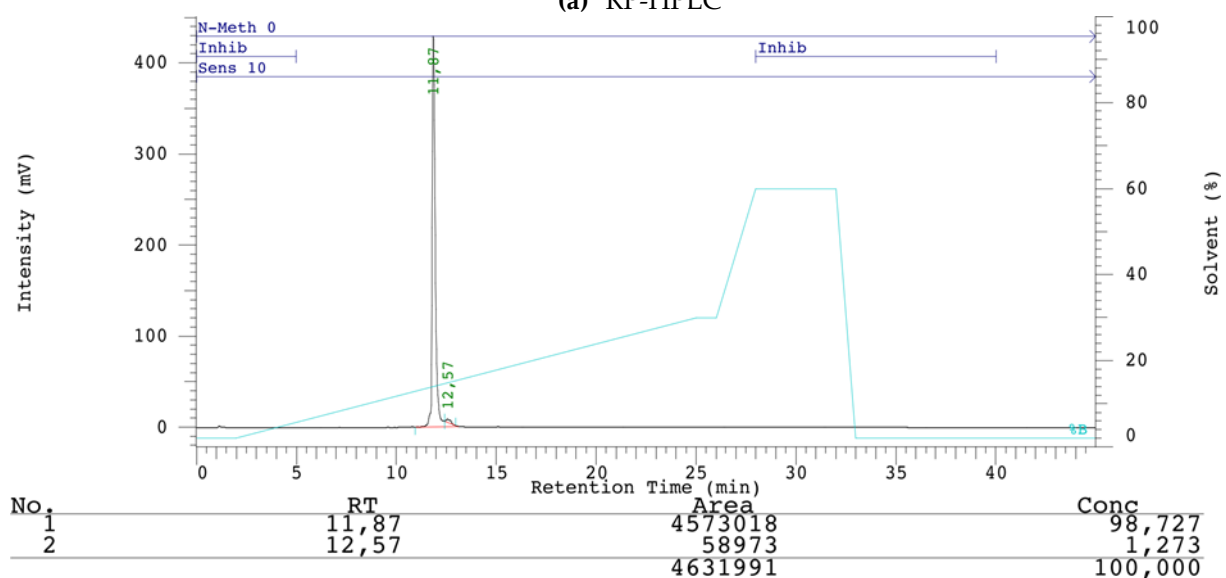


(c) MALDI-MS

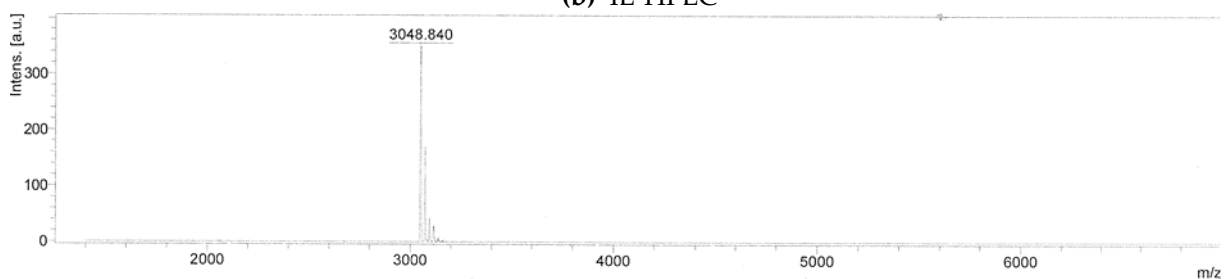
**Figure S5.** (a) Semi-preparative RP-HPLC ( $t_R$  15.906 min), (b) analytical IE-HPLC ( $t_R$  11.42 min) and (c) MALDI-MS (calcd.  $m/z$   $[M+H]^+$  3119.595) of ON9.



(a) RP-HPLC

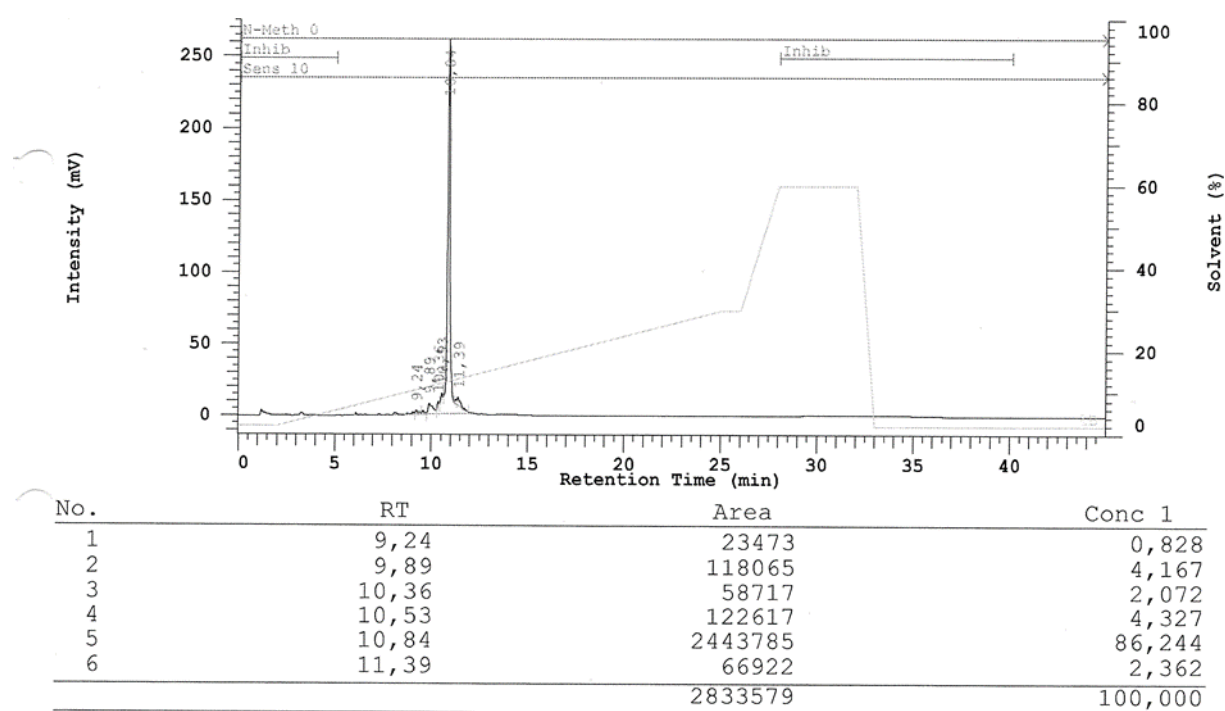


(b) IE-HPLC

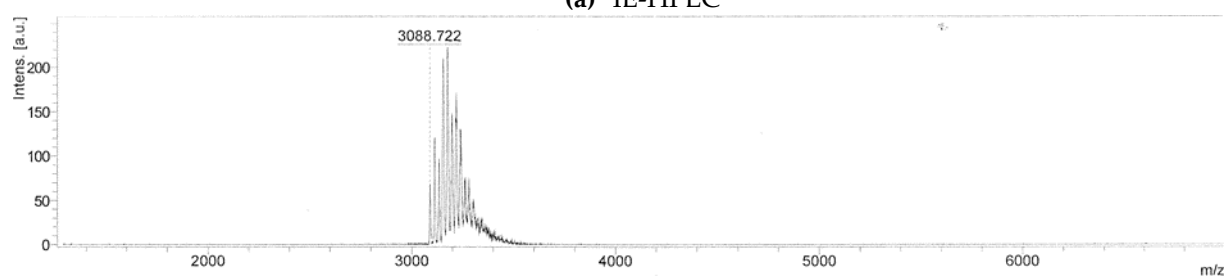


(c) MALDI-MS

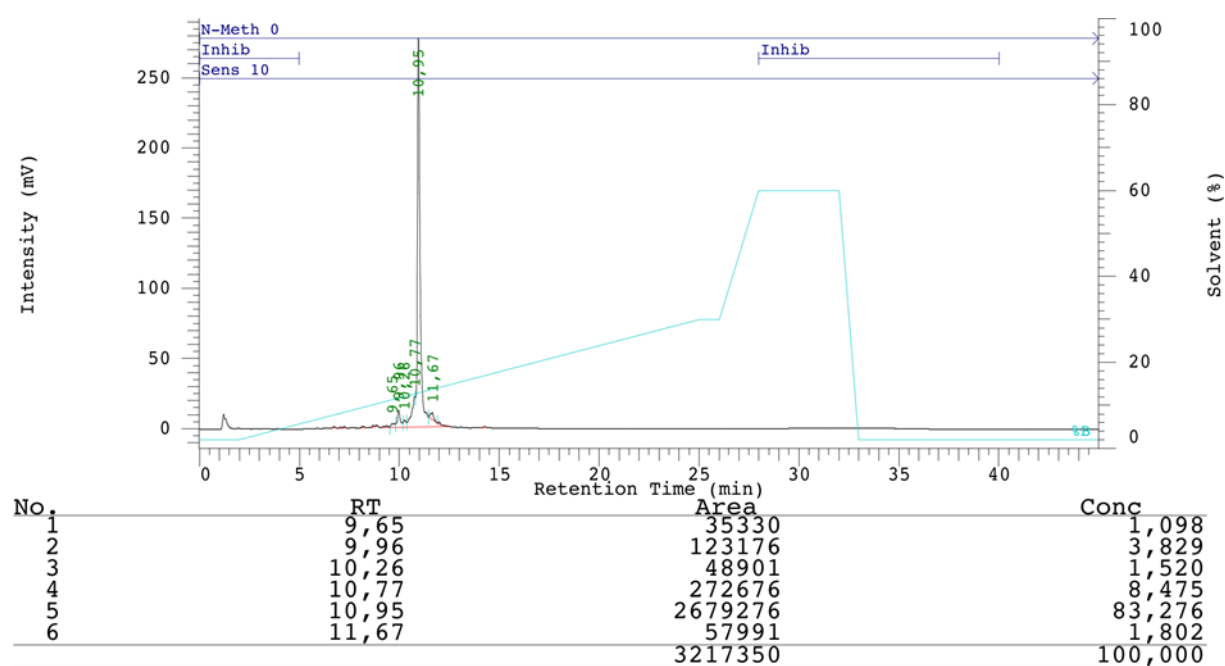
**Figure S6.** (a) Semi-preparative RP-HPLC (tR 15.959 min), (b) analytical IE-HPLC (tR 11.87 min) and (c) MALDI-MS (calcd. m/z [M+H]<sup>+</sup> 3048.222) of ON10.



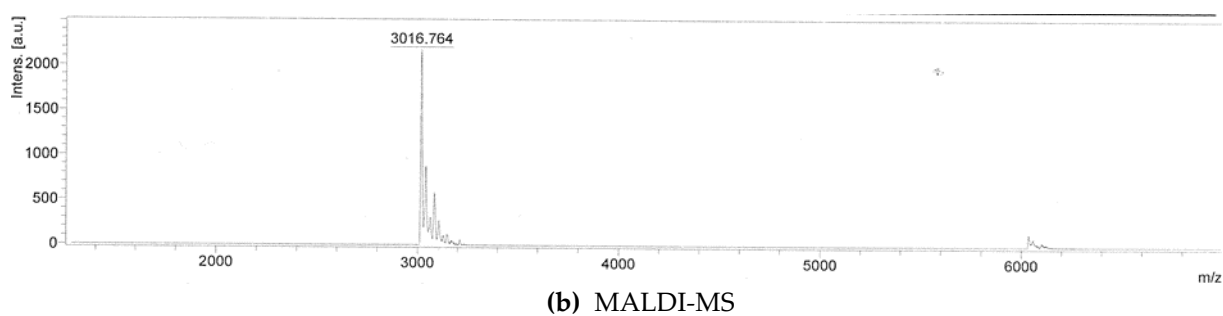
(a) IE-HPLC



(b) MALDI-MS

Figure S7. (a) Analytical IE-HPLC ( $t_R$  10.84 min) and (b) MALDI-MS (calcd.  $m/z$   $[M+H]^+$  3088.618) of ON11.

(a) IE-HPLC



**Figure S8.** (a) Analytical IE-HPLC ( $t_R$  10.95 min) and (b) MALDI-MS (calcd.  $m/z$   $[M+H]^+$  3017.618) of **ON12**.