

Impact of Future Climate Change on Wheat Production: Simulated Case for China's Wheat System

Dengpan Xiao ¹, Huizi Bai ^{1,*} and De Li Liu ^{2,3,*}

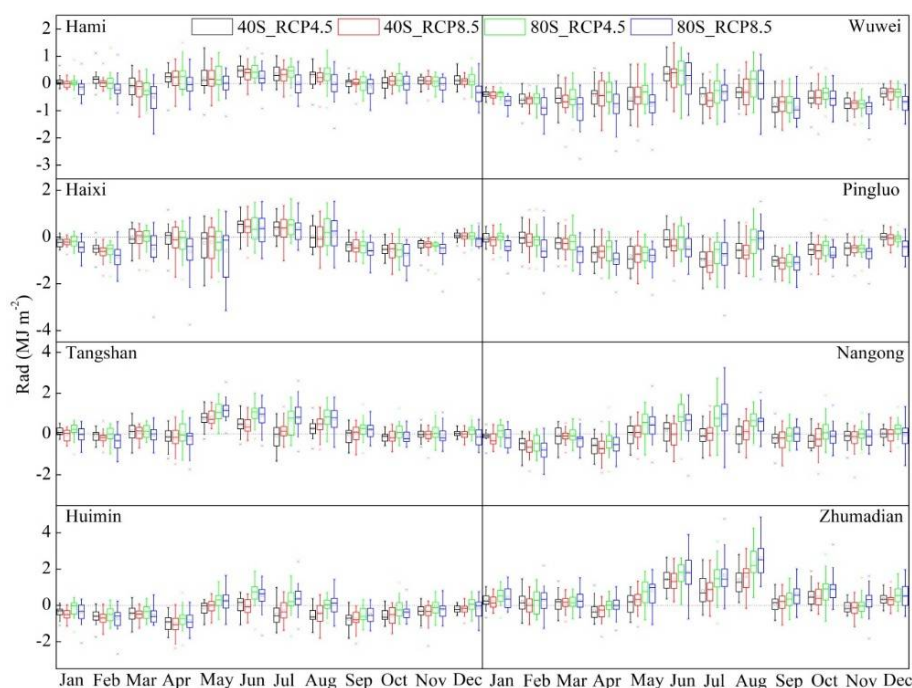


Figure S1. Changes in monthly mean daily radiation (Rad) for the 40S (2031–2060) and 80S (2071–2100) with baseline (1981–2010) periods under RCP4.5 and RCP8.5 conditions.

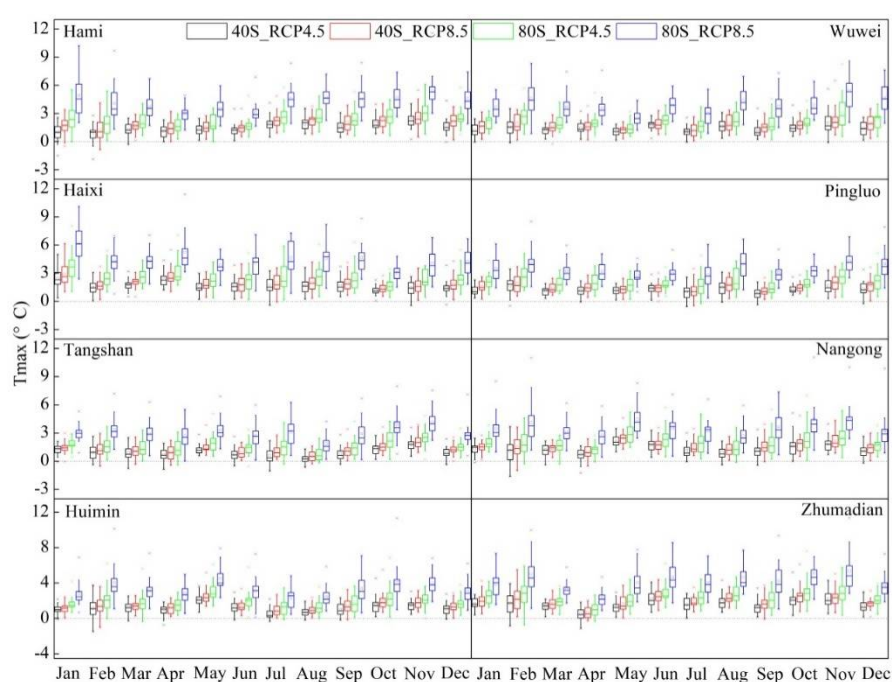


Figure S2. Changes in monthly daily maximum temperature (Tmax) for the 40S (2031–2060) and 80S (2071–2100) with baseline (1981–2010) periods under RCP4.5 and RCP8.5 conditions.

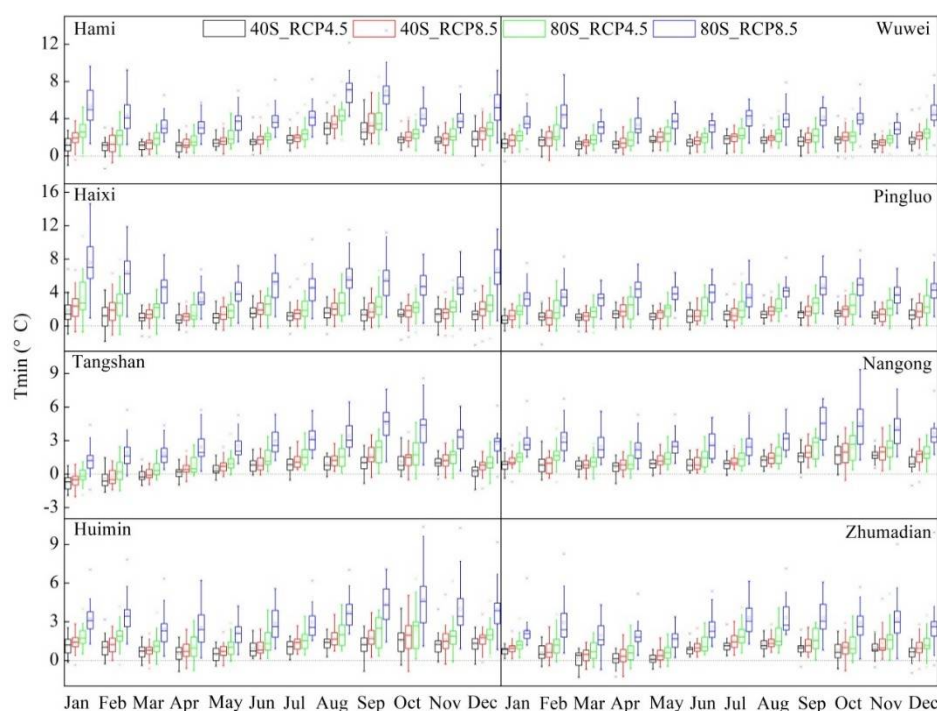


Figure S3. Changes in monthly daily minimum temperature (T_{min}) for the 40S (2031–2060) and 80S (2071–2100) with baseline (1981–2010) periods under RCP4.5 and RCP8.5 conditions.

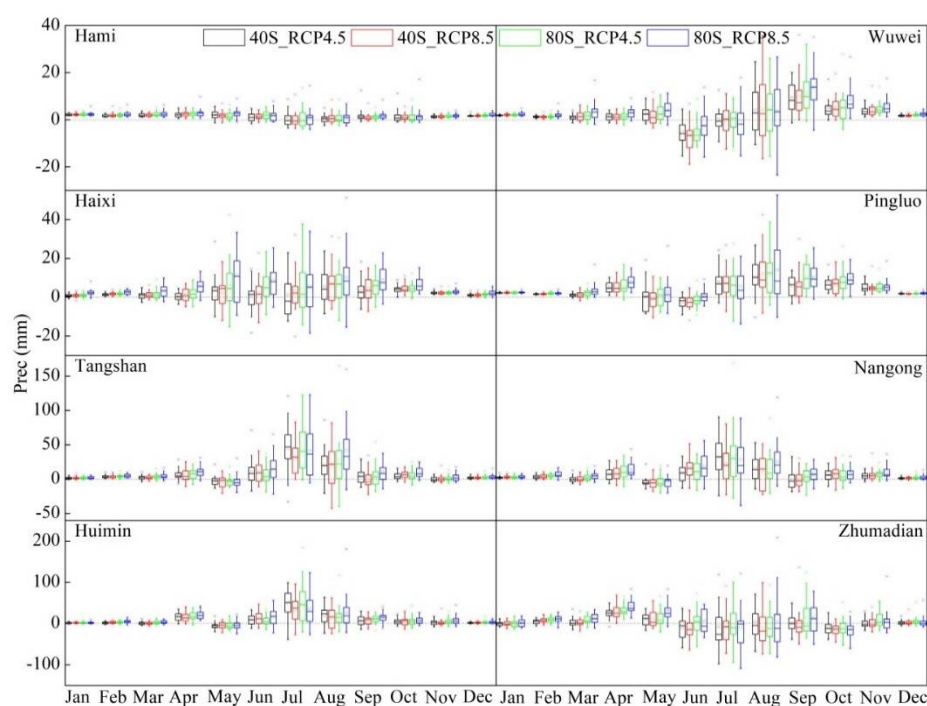


Figure S4. Changes in mean monthly total precipitation (Prec) for the 40S (2031–2060) and 80S (2071–2100) with baseline (1981–2010) periods under RCP4.5 and RCP8.5 conditions.