

Supplementary S2. Variation in subjective water quality (sWQ) responses.

In

Gunko, R.; Rapeli, L.; Karell, P. Striving with global stress on a local level. Has the COVID-19 pandemic changed the relationship between people and nature? *Sustainability* **2022**.

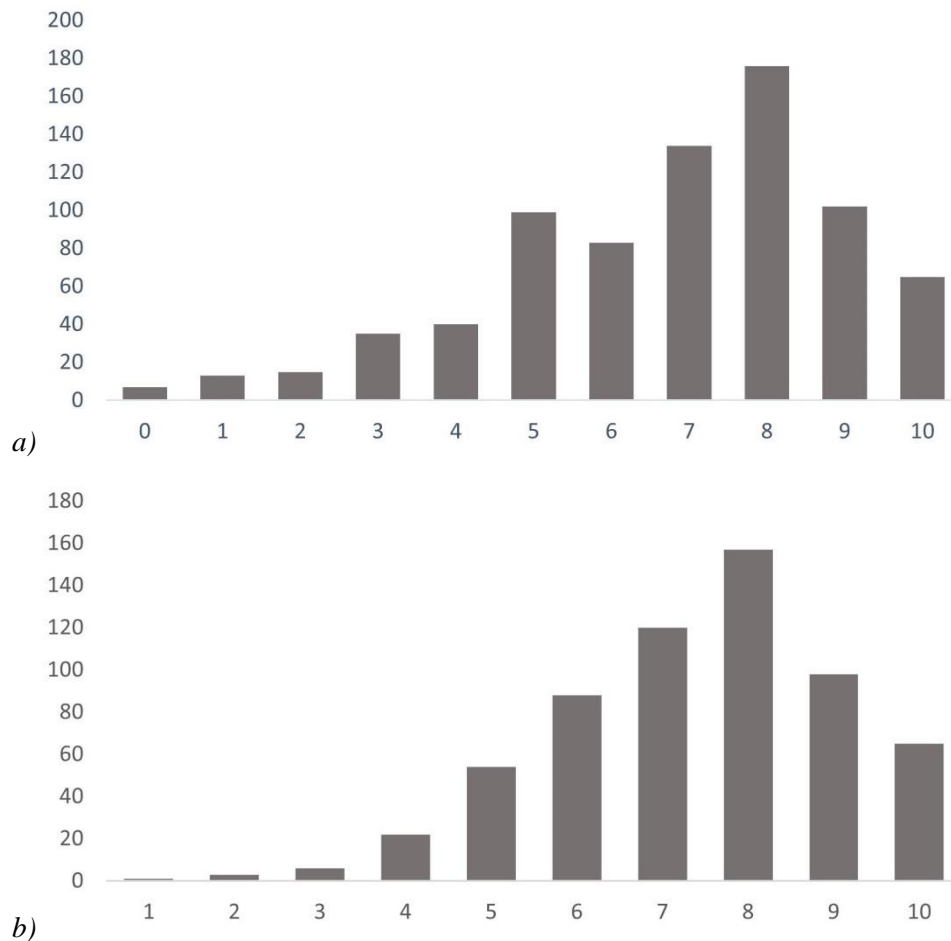


Figure S2. Histograms depicting the variation in responses about local subjective coastal water quality (sWQ): a) 2018-19; b) 2021. Values on the x-axis (0-10) refer to 0 = extremely poor water quality and 10 = extremely good water quality, the y-axis is the number of observations. Each sWQ assessment data point refers to a single locality in the study area. For a complete view of the study area and the data collection points see Figure 1 in the main article.