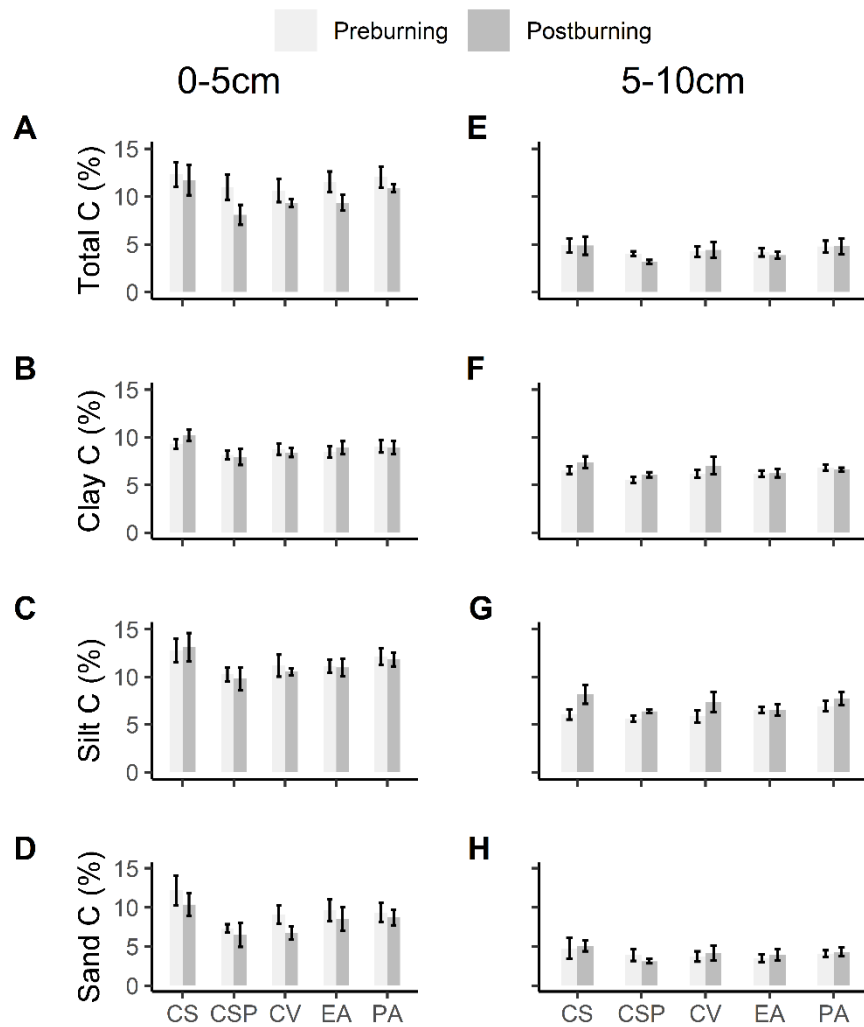
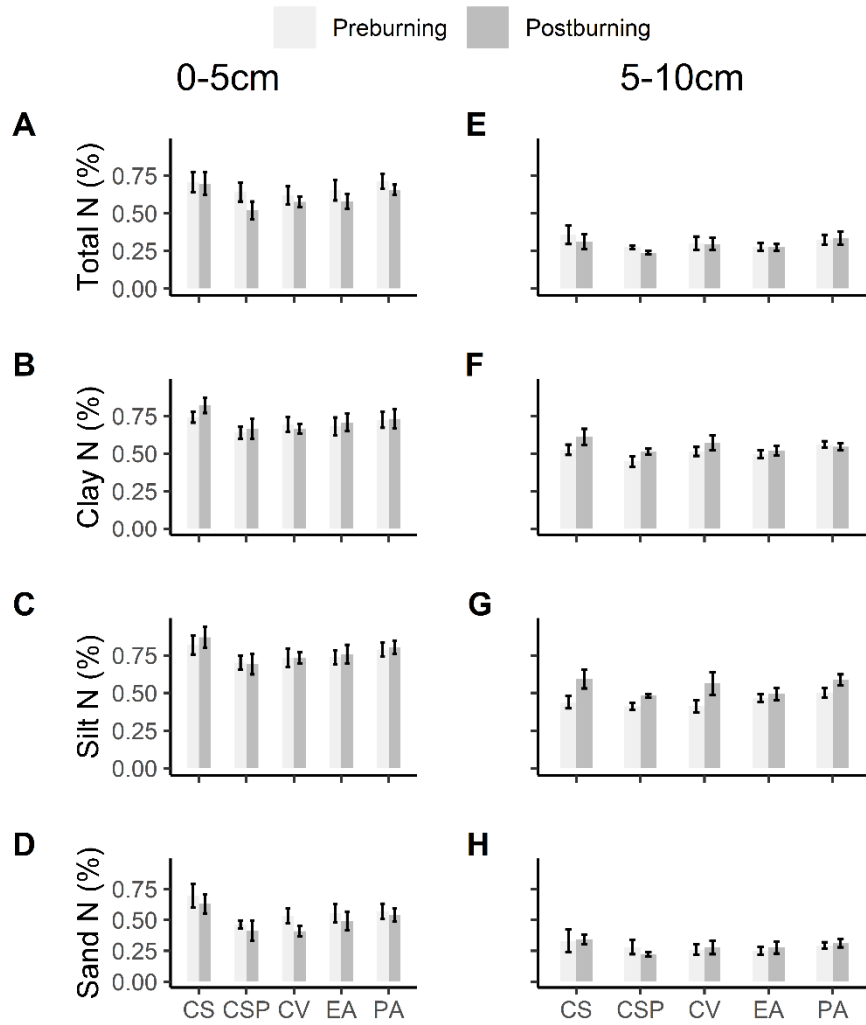


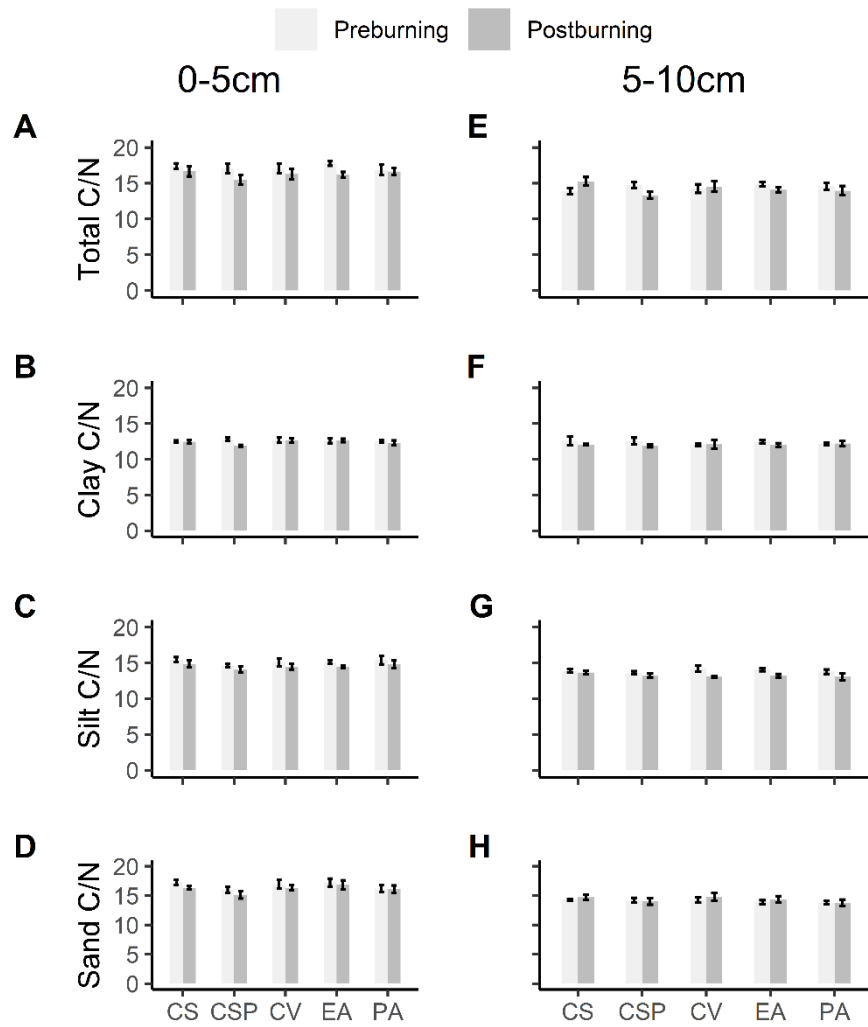
## Supplementary Materials



**Figure S1.** Mean  $\pm$  1 SE total and fractional (top to bottom) soil C distribution in the 0–5 cm and 5–10 cm soil layers per vegetation patch type (Cytisus scoparius (CS); Cladonia (CSP); Calluna vulgaris (CV); Erica arborea (EA); Pteridium aquilinum (PA)) and burning treatment (Graphs on the left column show values from the upper 0–5 cm soil layer, graphs on the right column, from the upper 5–10 cm soil layer. (A,E) total carbon, (B,F) clay carbon, (C,G) silt carbon, (D,H) sand carbon).



**Figure S2.** Mean  $\pm 1$  SE total and fractional (top to bottom) soil N distribution in the 0–5 cm and 5–10 cm soil layers per vegetation patch type (Cytisus scoparius (CS); Cladonia (CSP); Calluna vulgaris (CV); Erica arborea (EA); Pteridium aquilinum (PA)) and burning treatment (Graphs on the left column show values from the upper 0–5 cm soil layer, graphs on the right column, from the upper 5–10 cm soil layer. (A,E) total carbon, (B,F) clay carbon, (C,G) silt carbon, (D,H) sand carbon).



**Figure S3.** Mean  $\pm 1$  SE total and fractional (top to bottom) soil C/N ratio distribution in the 0-5 cm and 5-10 cm soil layers per vegetation patch type (*Cytisus scoparius* (CS); *Cladonia* (CSP); *Calluna vulgaris* (CV); *Erica arborea* (EA); *Pteridium aquilinum* (PA)) and burning treatment (Graphs on the left column show values from the upper 0-5 cm soil layer, graphs on the right column, from the upper 5-10 cm soil layer. (A,E) total carbon, (B,F) clay carbon, (C,G) silt carbon, (D,H) sand carbon).