

Correction

Correction: Zhang et al. Corridors Construction and Development Strategies for Intangible Cultural Heritage: A Study about the Yangtze River Economic Belt. *Sustainability* 2023, 15, 13449

Tianxin Zhang ¹, Yuliang Yang ^{1,*}, Xin Fan ^{2,3} and Shengya Ou ^{4,5}

¹ Faculty of Geography, Yunnan Normal University, No. 768 Juxian Road, Kunming 650500, China; 2123130050@ynnu.edu.cn

² Department of Land Resource Management, School of Public Administration, China University of Geosciences, Wuhan 430074, China; fanfx8@cug.edu.cn

³ Center for Turkmenistan Studies, China University of Geosciences, Wuhan 430074, China

⁴ State Key Laboratory of Remote Sensing Science, Aerospace Information Research Institute, Chinese Academy of Sciences, Beijing 100094, China; oushengya22@mailsucas.ac.cn

⁵ College of Resources and Environment, University of Chinese Academy of Sciences, Beijing 101408, China

* Correspondence: yangyuliang@ynnu.edu.cn

The authors would like to make the following corrections to the published paper [1]. The changes are as follows:

- (1) The authors incorrectly uploaded subfigure (c) of Figure 1 as Figure 5, and would like to change subfigure (c) in the picture, so we need to replace the original Figure 1:



Citation: Zhang, T.; Yang, Y.; Fan, X.; Ou, S. Correction: Zhang et al. Corridors Construction and Development Strategies for Intangible Cultural Heritage: A Study about the Yangtze River Economic Belt. *Sustainability* 2023, 15, 13449. *Sustainability* 2023, 15, 16184. <https://doi.org/10.3390/su152316184>

Received: 7 November 2023

Accepted: 13 November 2023

Published: 22 November 2023



Copyright: © 2023 by the authors. Licensee MDPI, Basel, Switzerland. This article is an open access article distributed under the terms and conditions of the Creative Commons Attribution (CC BY) license (<https://creativecommons.org/licenses/by/4.0/>).

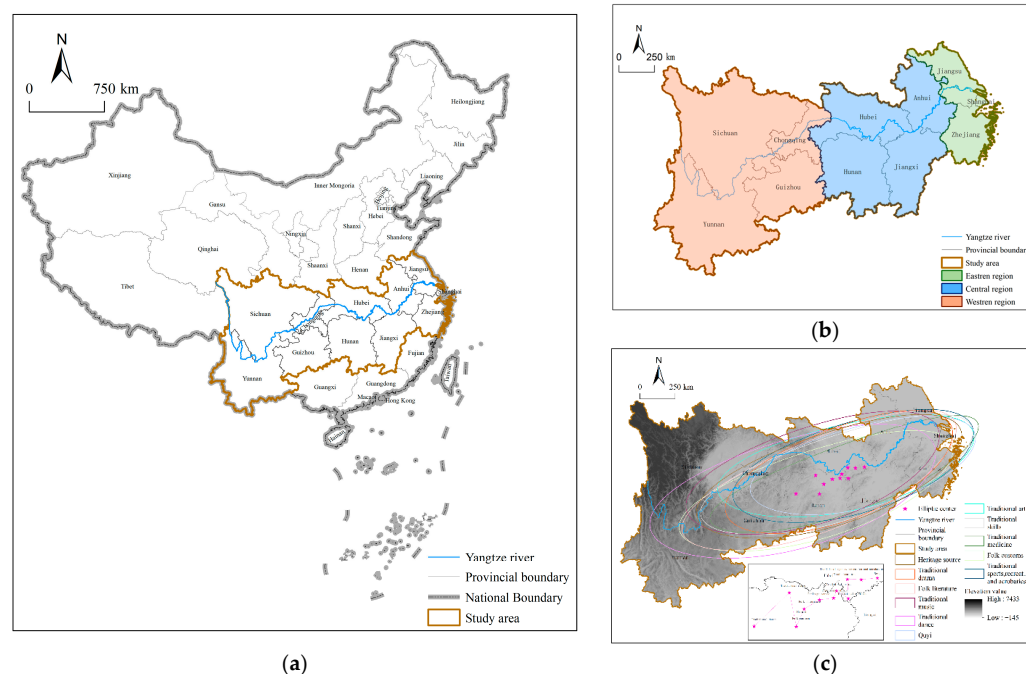


Figure 1. Study area. (a) Location of the Yangtze River Economic Belt in China. (b) The eastern, central, and western regions of the Yangtze River Economic Belt. (c) The distribution of ICH in the Yangtze River Economic Belt.

With:

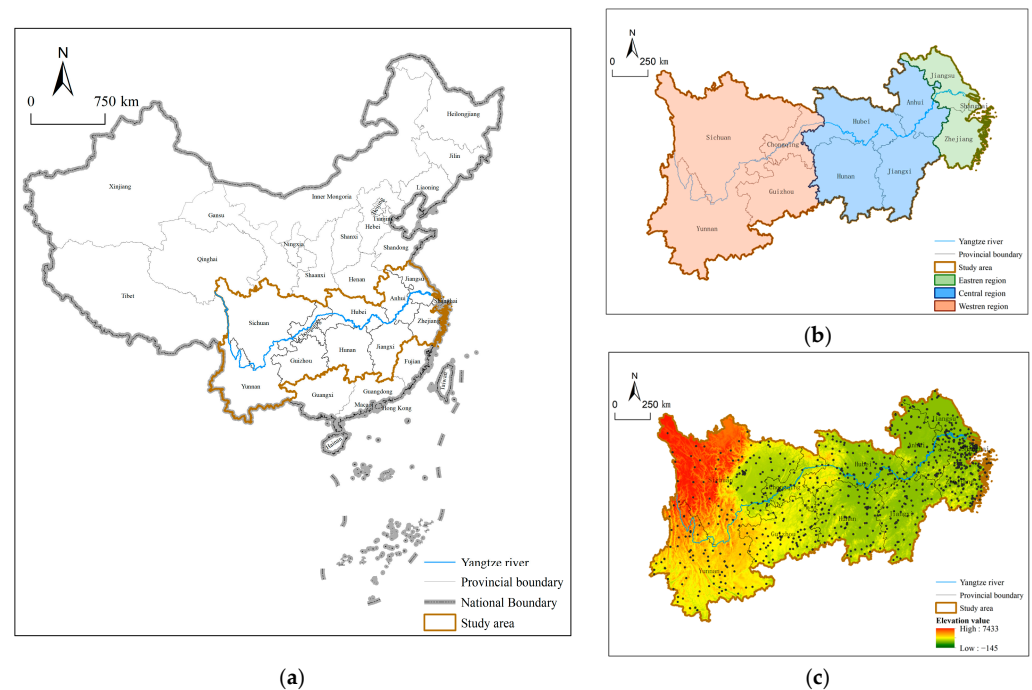


Figure 1. Study area. (a) Location of the Yangtze River Economic Belt in China. (b) The eastern, central, and western regions of the Yangtze River Economic Belt. (c) The distribution of ICH in the Yangtze River Economic Belt.

The authors apologize for any inconvenience caused and state that the scientific conclusions are unaffected. This correction was approved by the Academic Editor. The original publication has also been updated.

Reference

1. Zhang, T.; Yang, Y.; Fan, X.; Ou, S. Corridors Construction and Development Strategies for Intangible Cultural Heritage: A Study about the Yangtze River Economic Belt. *Sustainability* **2023**, *15*, 13449. [[CrossRef](#)]

Disclaimer/Publisher's Note: The statements, opinions and data contained in all publications are solely those of the individual author(s) and contributor(s) and not of MDPI and/or the editor(s). MDPI and/or the editor(s) disclaim responsibility for any injury to people or property resulting from any ideas, methods, instructions or products referred to in the content.