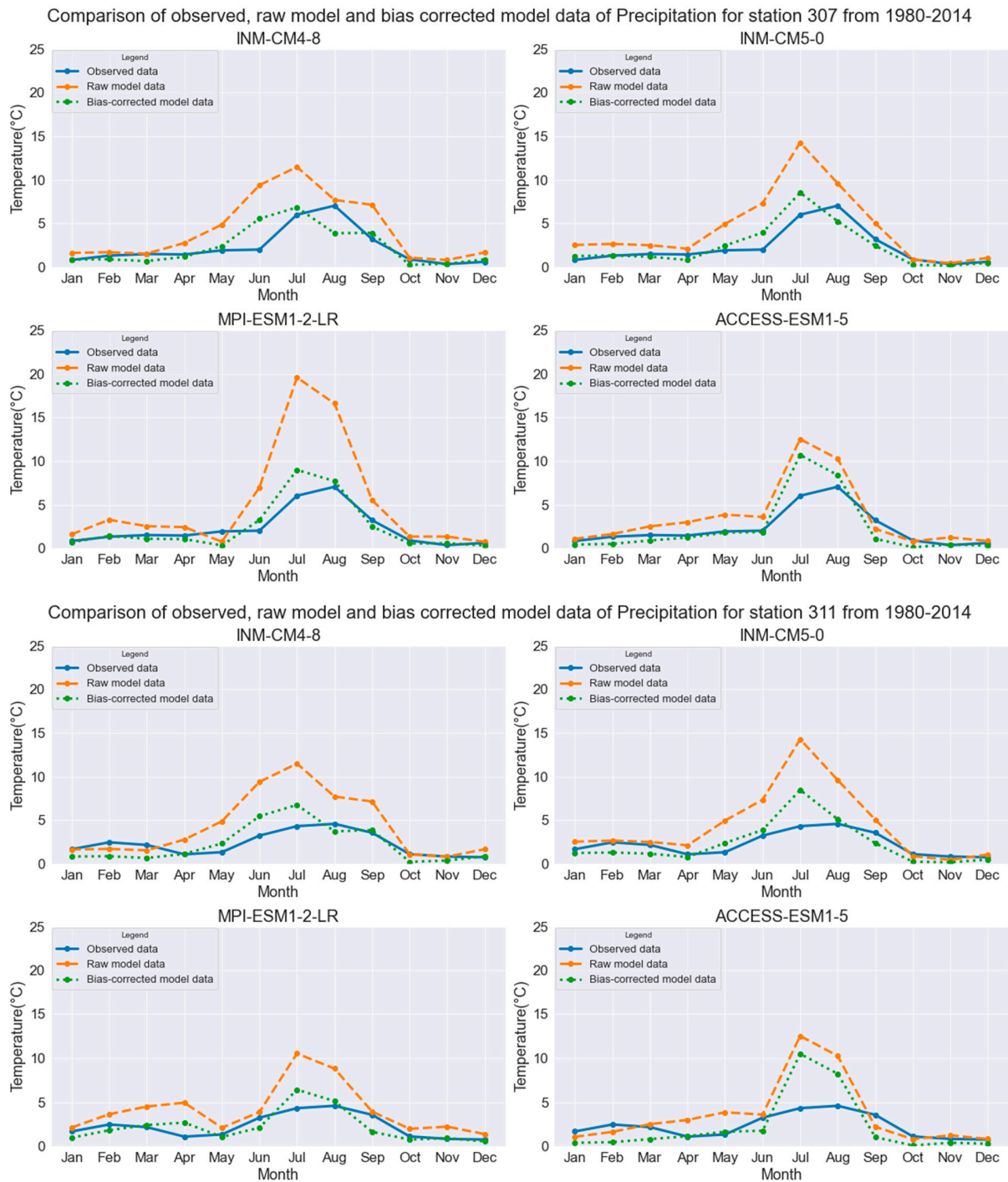
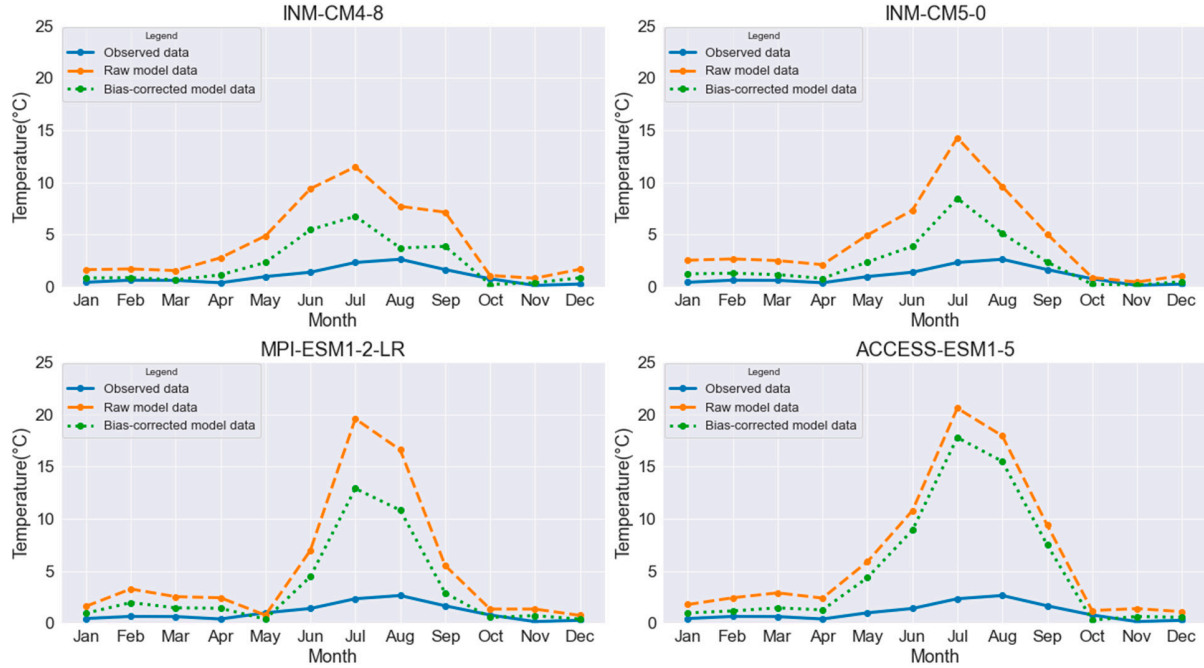


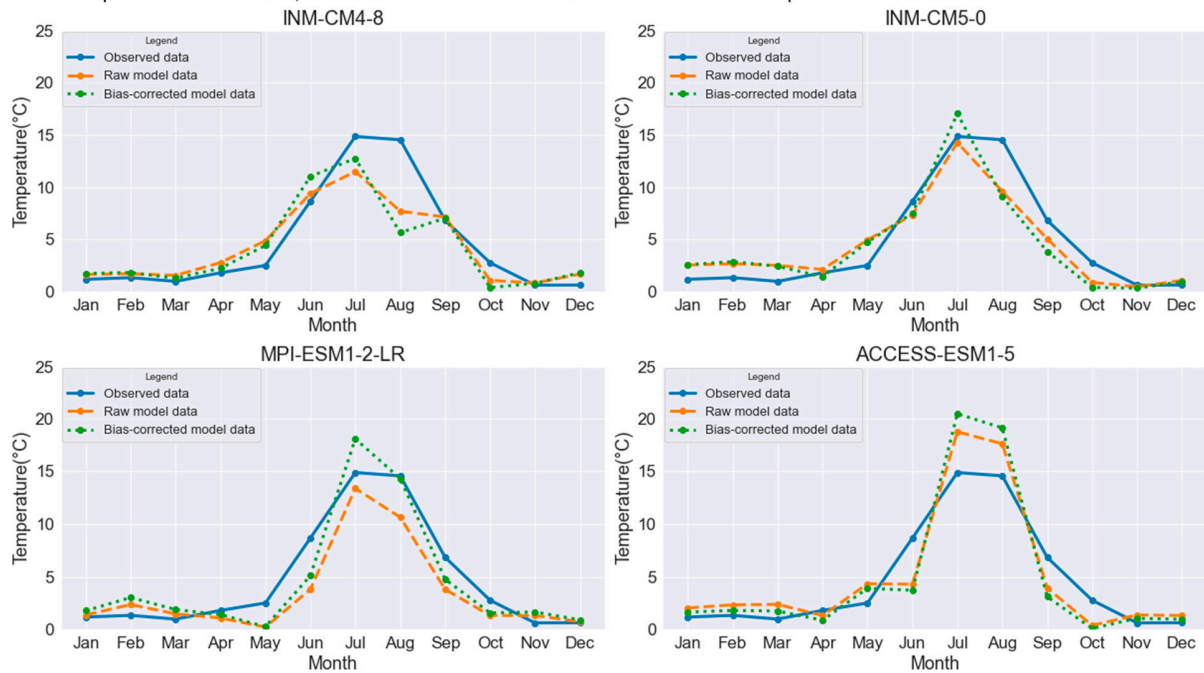
Figure S1. Comparison of observed data, raw model data and bias corrected model data for precipitation, maximum and minimum temperatures.



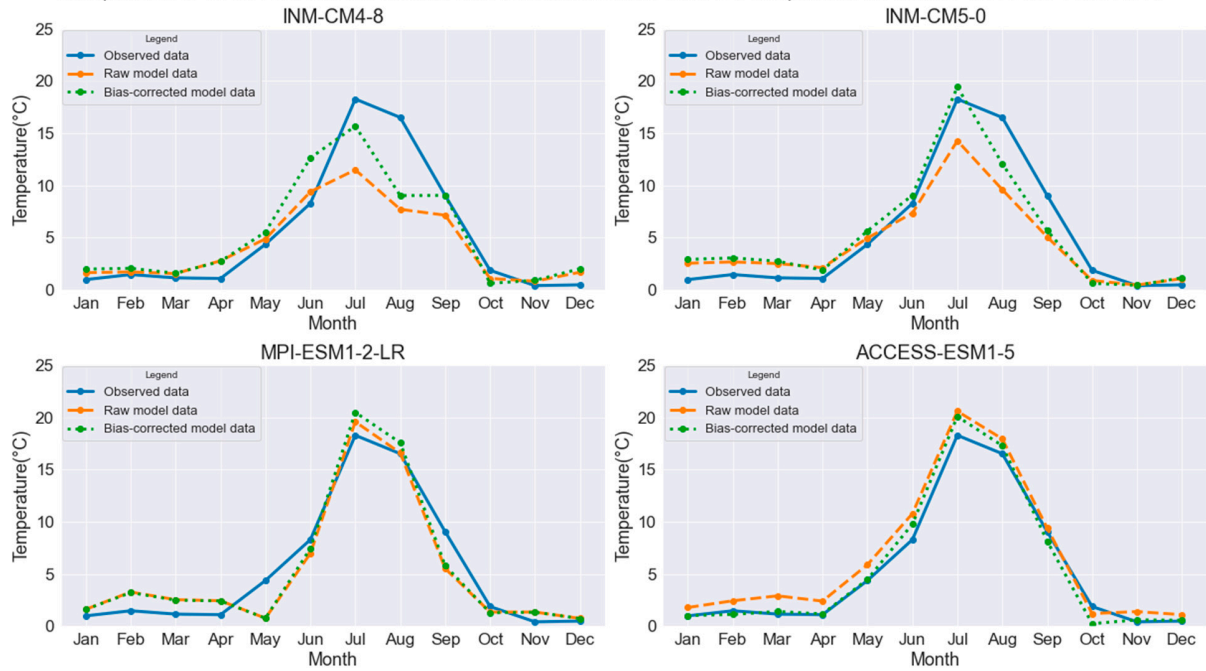
Comparison of observed, raw model and bias corrected model data of Precipitation for station 312 from 1980-2014



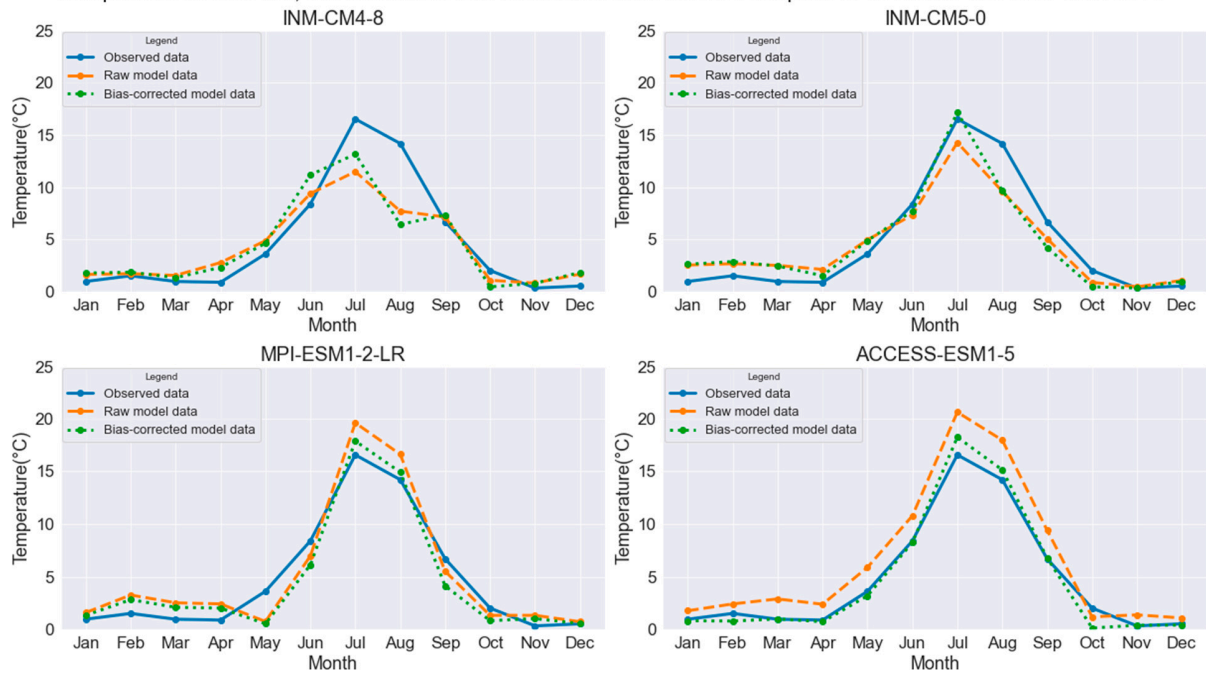
Comparison of observed, raw model and bias corrected model data of Precipitation for station 401 from 1980-2014



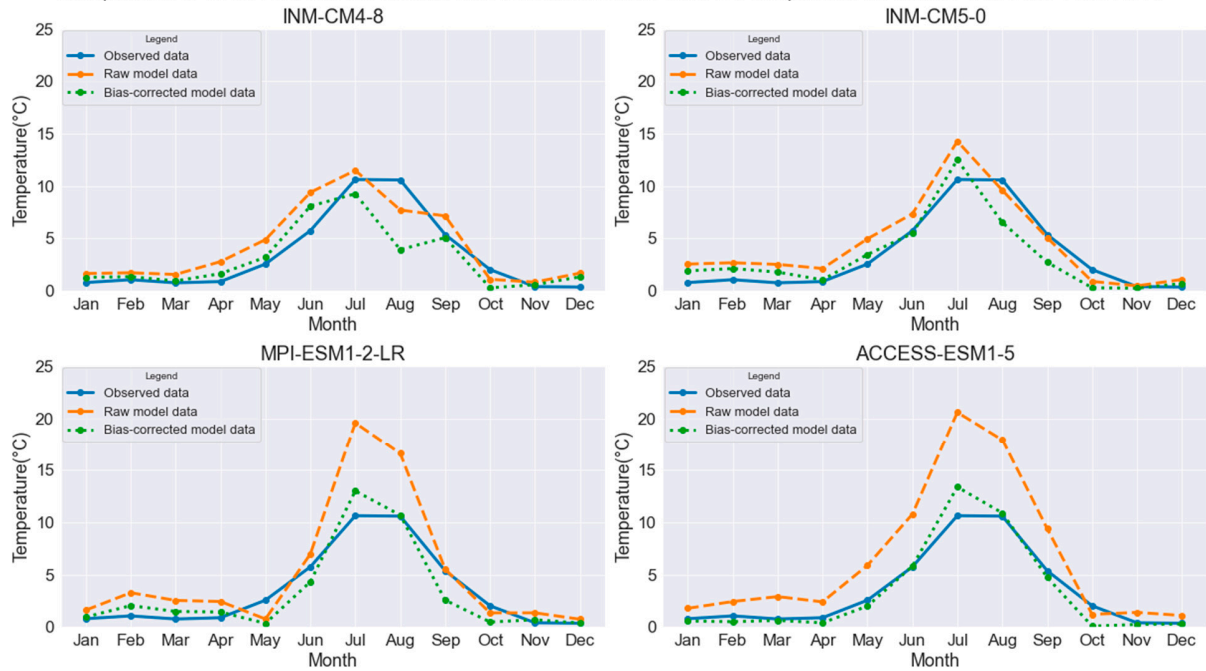
Comparison of observed, raw model and bias corrected model data of Precipitation for station 402 from 1980-2014



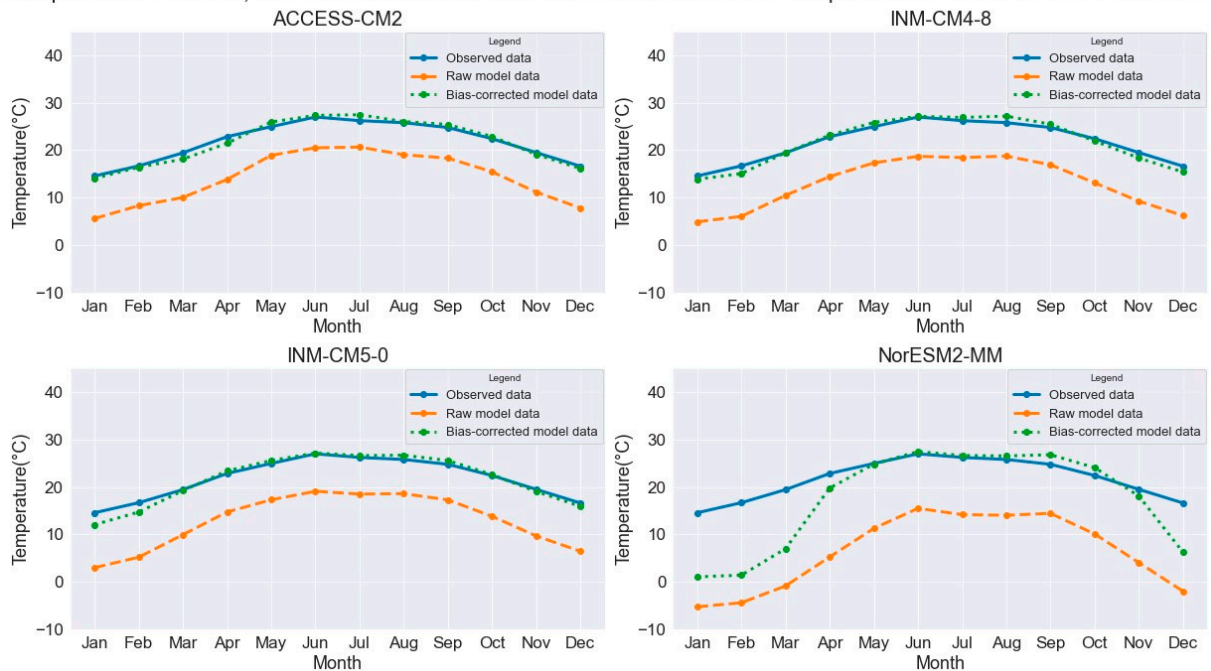
Comparison of observed, raw model and bias corrected model data of Precipitation for station 406 from 1980-2014



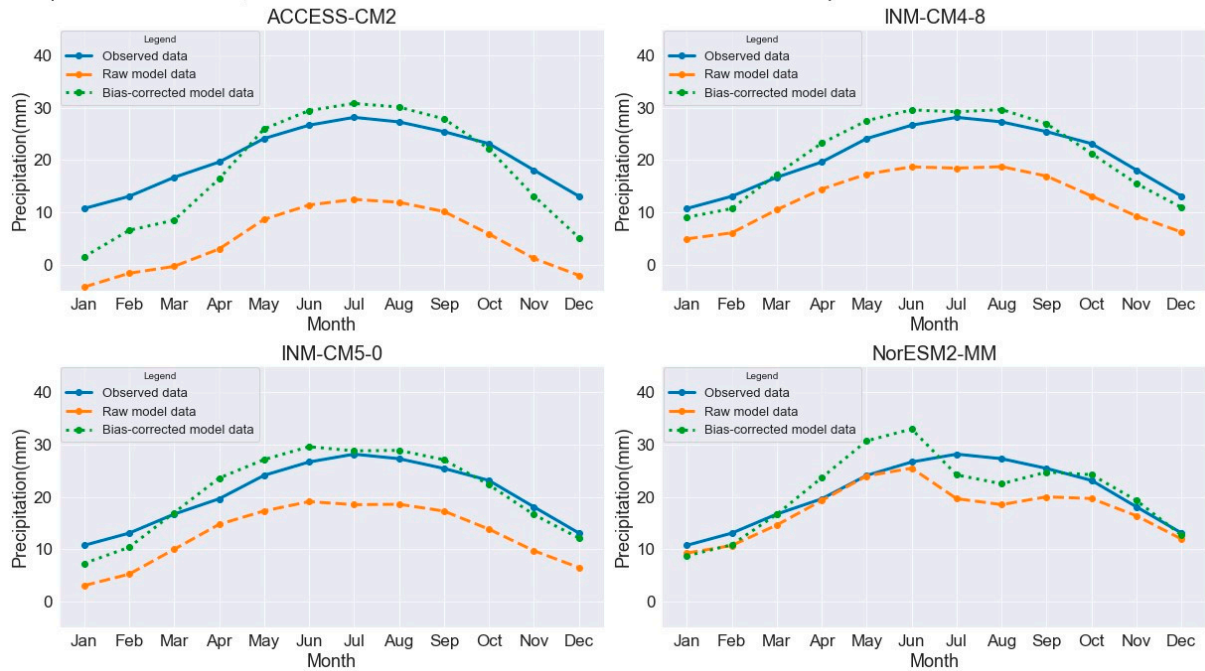
Comparison of observed, raw model and bias corrected model data of Precipitation for station 513 from 1980-2014



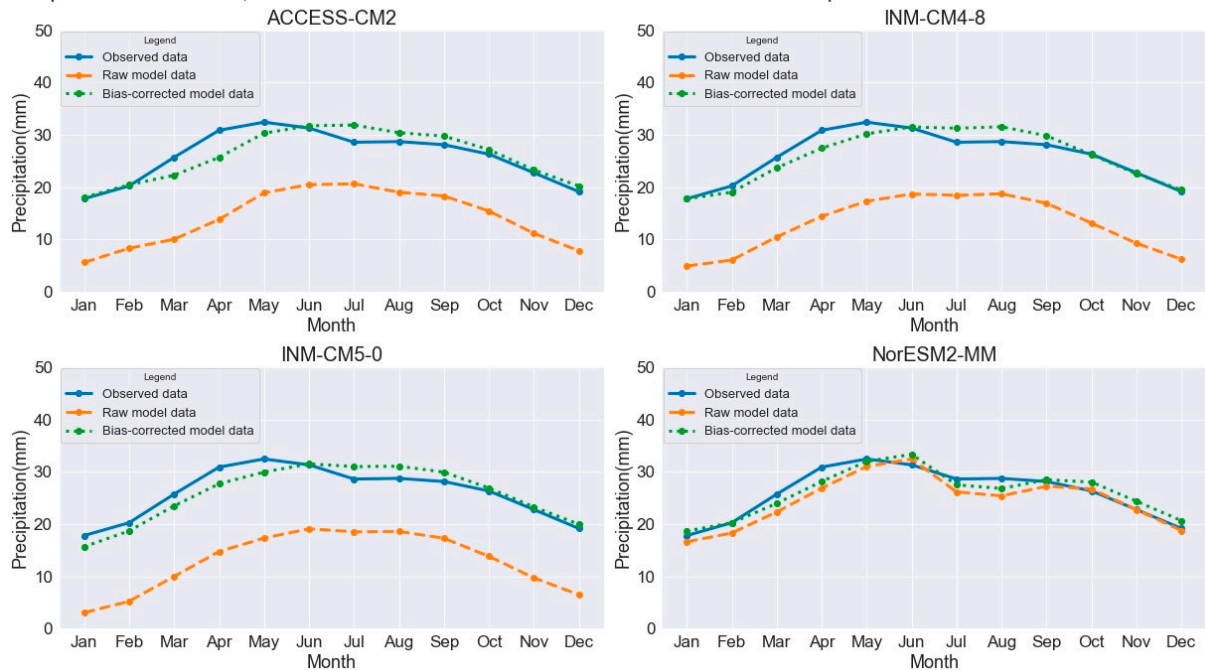
Comparison of observed, raw model and bias corrected model data of Maximum Temperature for station 310 from 1980-2014



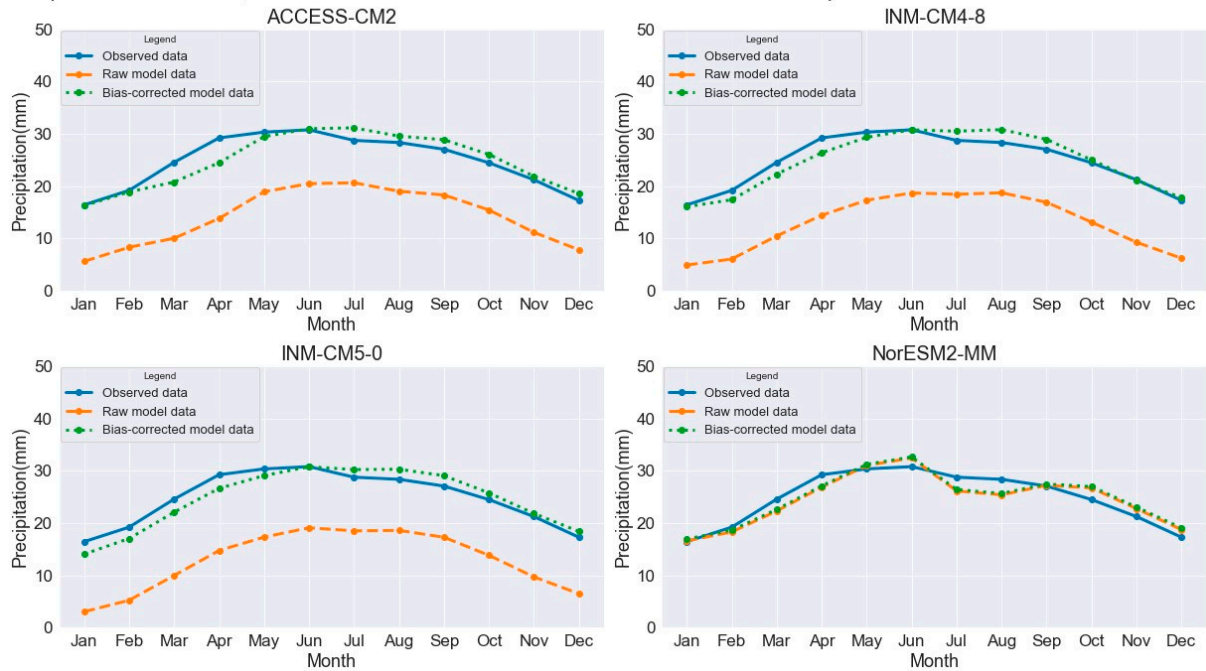
Comparison of observed, raw model and bias corrected model data of Maximum Temperature for station 312 from 1980-2014



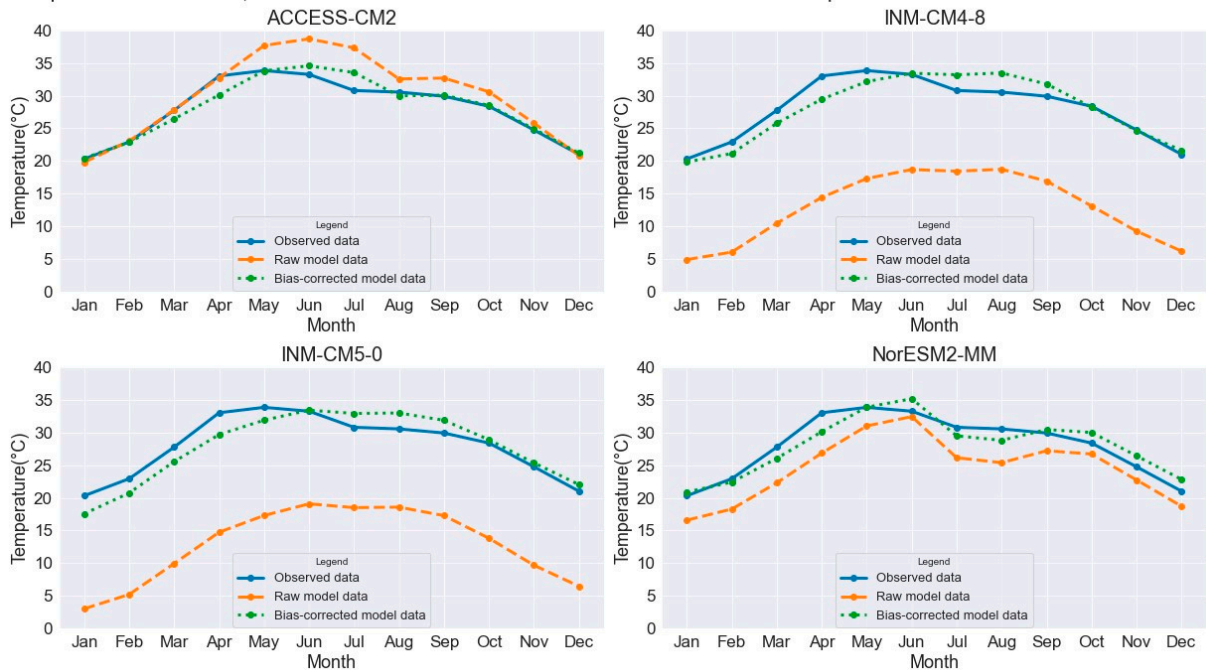
Comparison of observed, raw model and bias corrected model data of Maximum Temperature for station 401 from 1980-2014



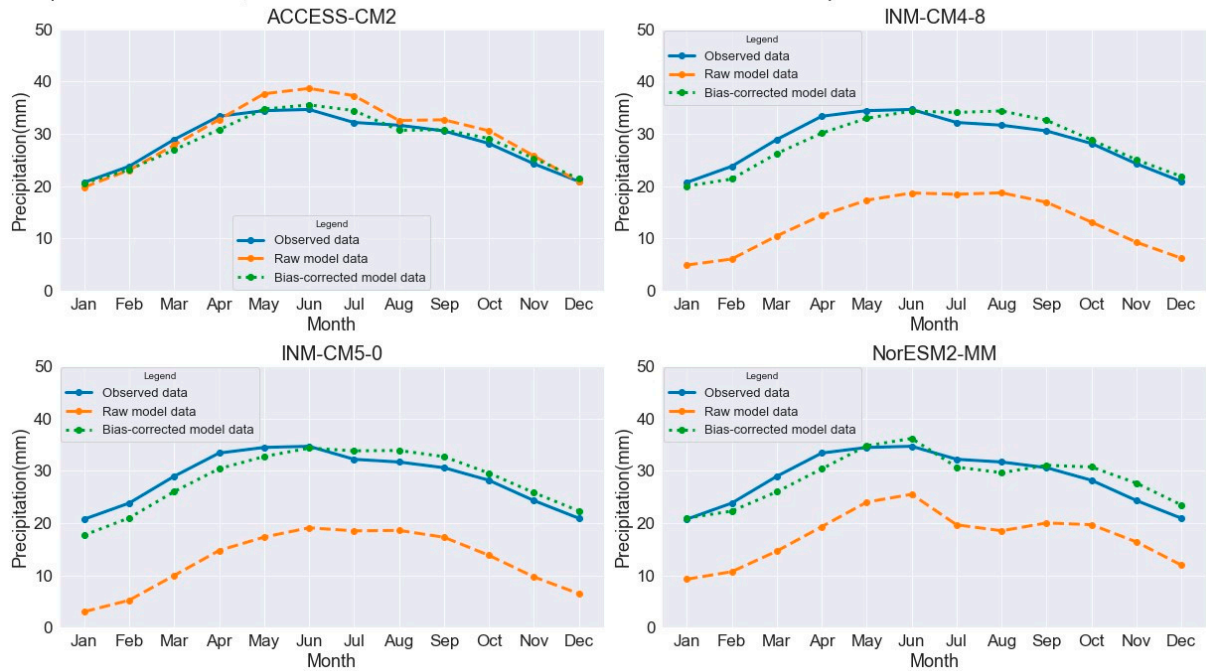
Comparison of observed, raw model and bias corrected model data of Maximum Temperature for station 402 from 1980-2014



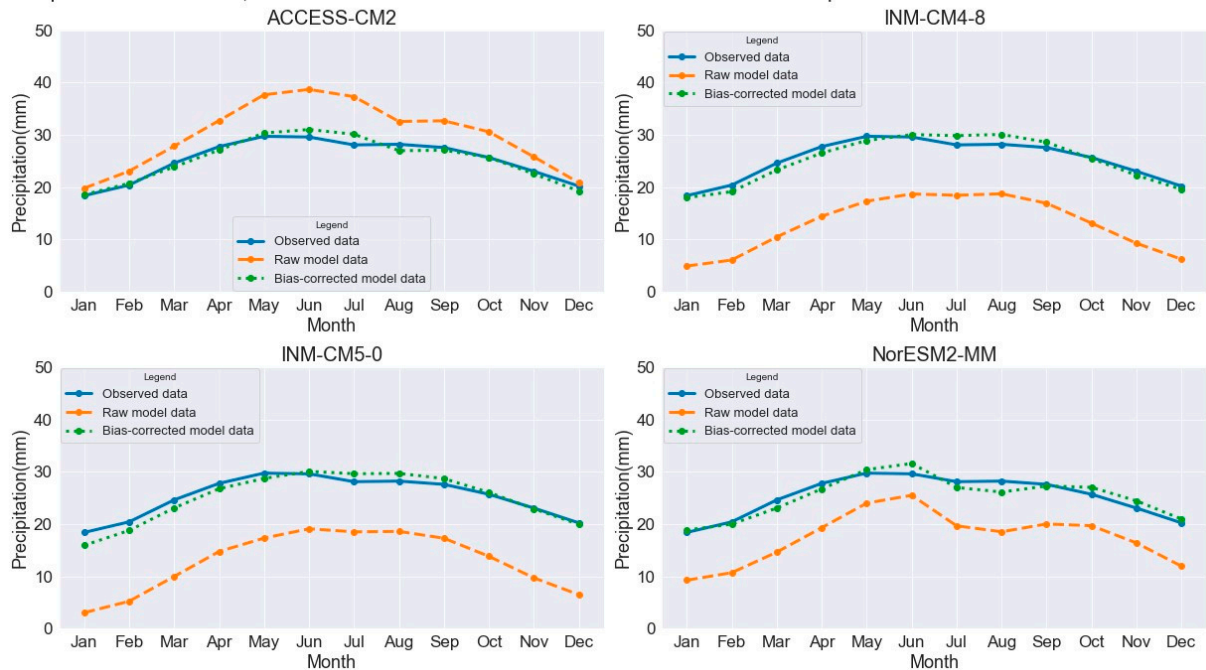
Comparison of observed, raw model and bias corrected model data of Maximum Temperature for station 406 from 1980-2014



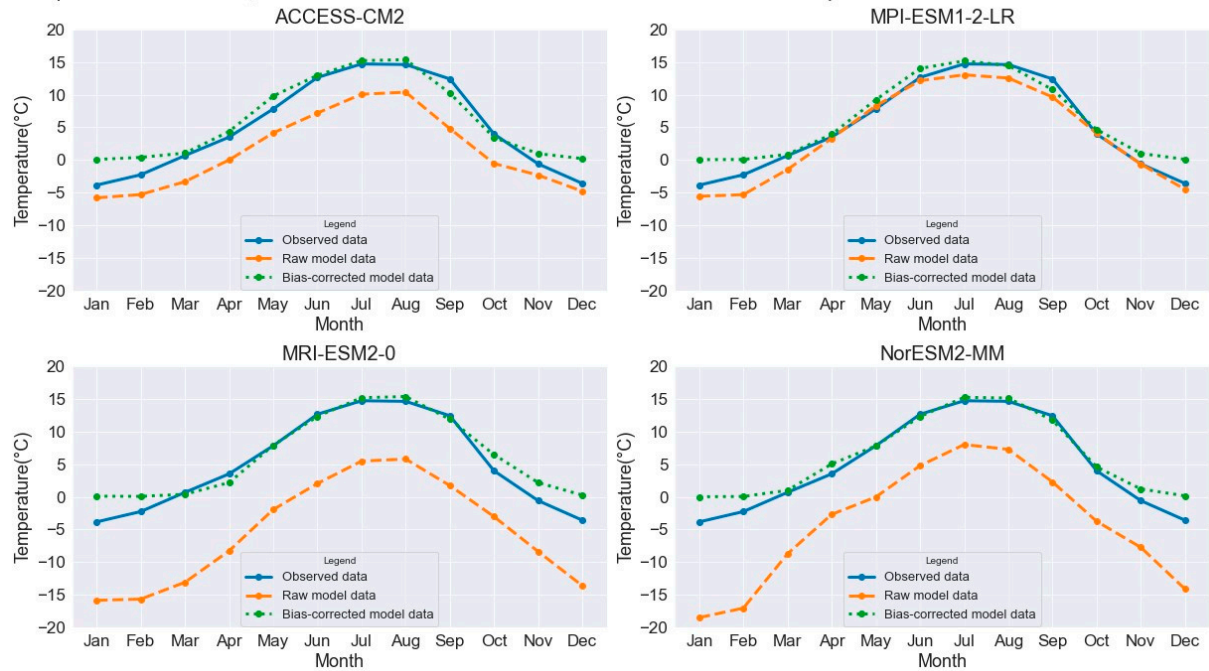
Comparison of observed, raw model and bias corrected model data of Maximum Temperature for station 513 from 1980-2014



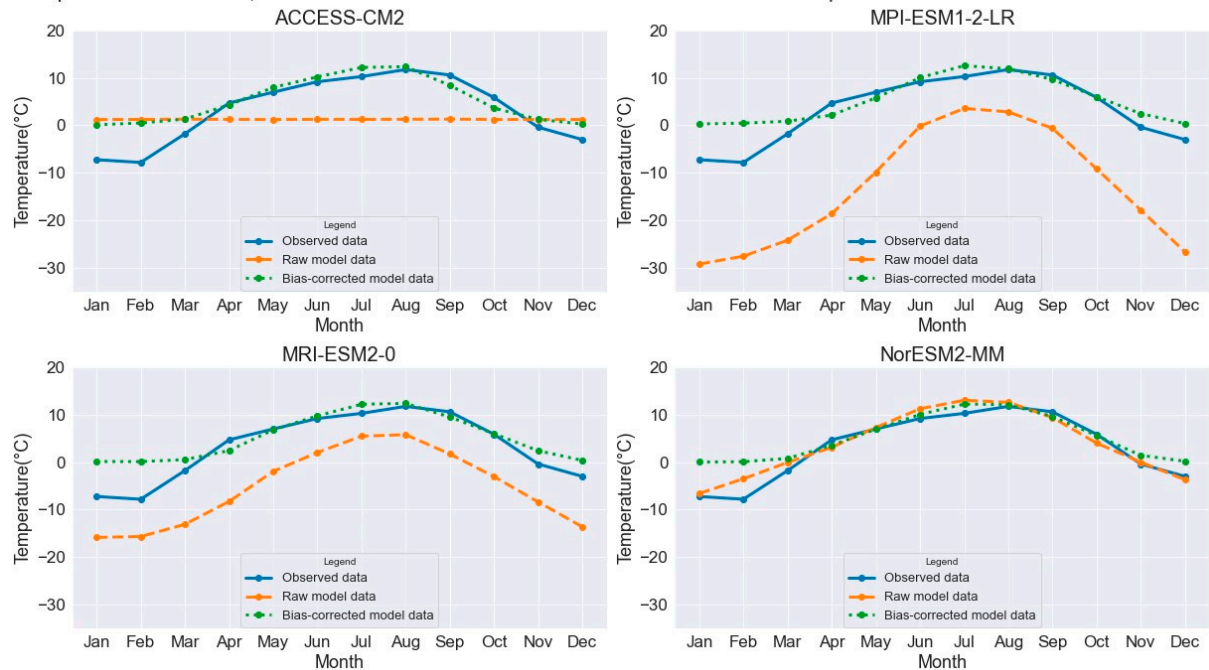
Comparison of observed, raw model and bias corrected model data of Maximum Temperature for station 514 from 1980-2014



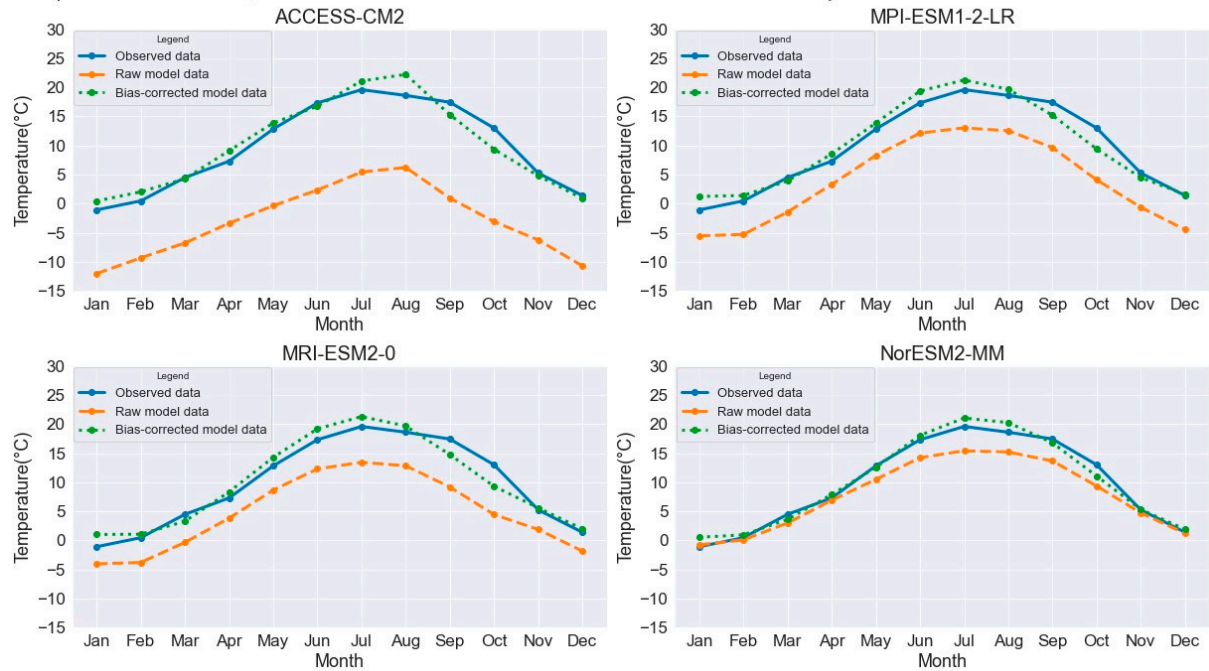
Comparison of observed, raw model and bias corrected model data of Minimum Temperature for station 310 from 1980-2014



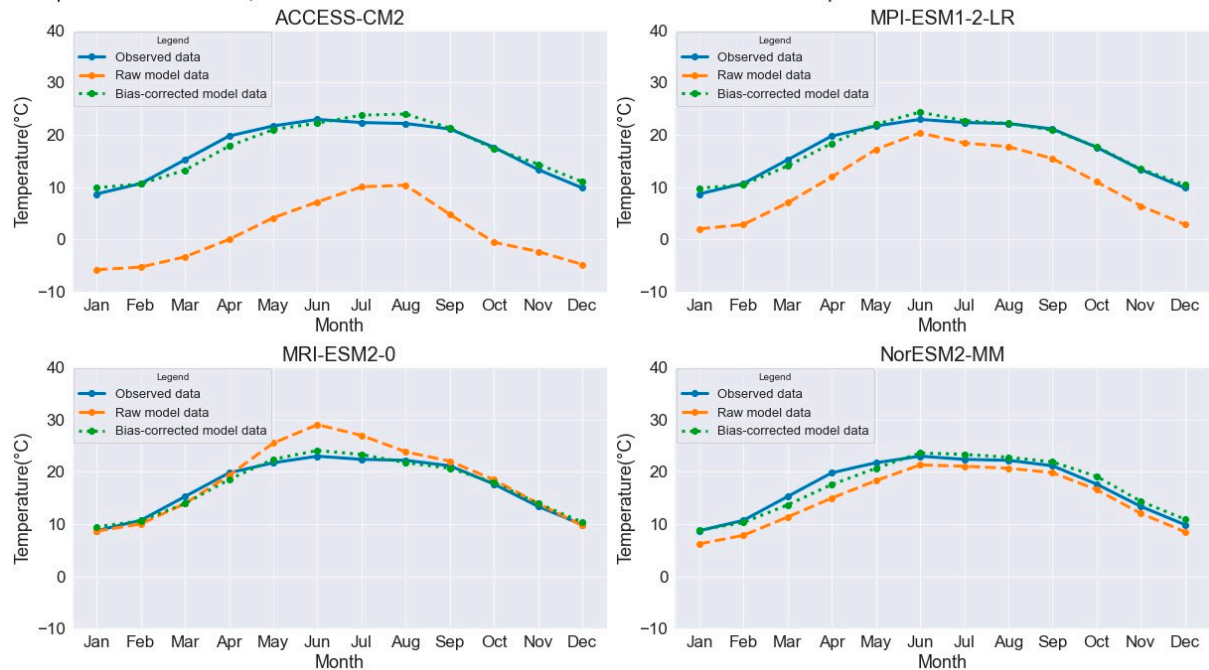
Comparison of observed, raw model and bias corrected model data of Minimum Temperature for station 311 from 1980-2014



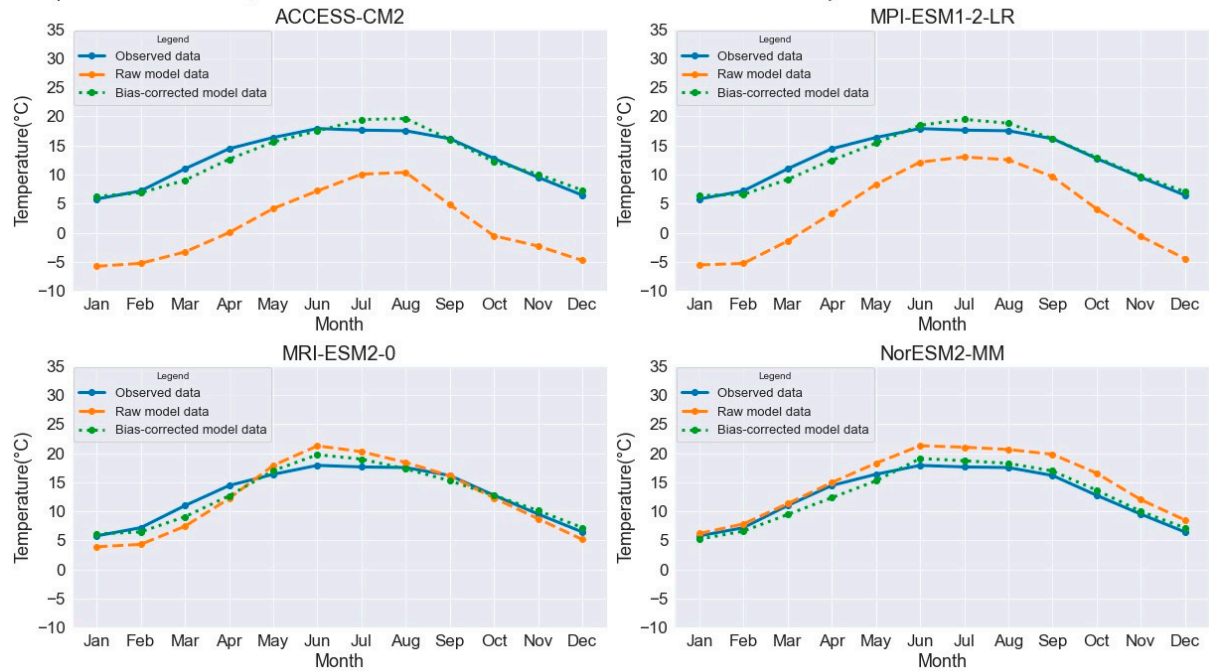
Comparison of observed, raw model and bias corrected model data of Minimum Temperature for station 312 from 1980-2014



Comparison of observed, raw model and bias corrected model data of Minimum Temperature for station 401 from 1980-2014



Comparison of observed, raw model and bias corrected model data of Minimum Temperature for station 402 from 1980-2014



Comparison of observed, raw model and bias corrected model data of Minimum Temperature for station 514 from 1980-2014

