


Article

Optimal Operation of a Grid-Connected Hybrid Renewable Energy System for Residential Applications

Akbar Maleki ^{1,*}, Marc A. Rosen ² and Fathollah Pourfayaz ^{1,*} 

¹ Department of Renewable Energies, Faculty of New Science & Technologies, University of Tehran, POB 14395-1561, Tehran, Iran

² Faculty of Engineering and Applied Science, University of Ontario Institute of Technology, Oshawa, ON L1H 7K4, Canada; marc.rosen@uoit.ca

* Correspondence: a_maleki@ut.ac.ir or akbar.maleki20@yahoo.com (A.M.), pourfayaz@ut.ac.ir (F.P.)

Received: 15 June 2017; Accepted: 18 July 2017; Published: 27 July 2017

Abstract: The results of a study on incorporating solar-thermal collectors into a hybrid renewable energy system are reported. A photovoltaic–wind turbine–fuel cell–solar-thermal collector system is designed and an economic model is introduced for supplying the residential thermal and electrical loads via the grid-connected hybrid system. Since determining the optimal operation of a hybrid system such as a combined heat and power system constitutes a complex optimization problem requiring a sophisticated optimization method, a modified heuristic approach-based particle swarm optimization is proposed for solving the optimization problem. The results are compared with those obtained by an efficient metaheuristic optimization method, namely a genetic algorithm, in terms of accuracy and run time. The results show that, using the grid-connected hybrid combined heat and power system, among the cases considered, decreases the total cost of the system. The results also demonstrate that the reductions in daily cost relative to the base case by the modified particle swarm optimization algorithm for Cases 1–4 are 5.01%, 25.59%, 19.42%, and 22.19%, respectively. Finally, Case 2 is the most cost-effective and reliable. Moreover, the modified particle swarm optimization algorithm leads to better results than the genetic algorithm.

Keywords: solar energy; wind energy; hydrogen; grid-connected renewable energy system; hybrid energy system; combined heat and power; particle swarm optimization

1. Introduction

Global residential energy consumption has increased in recent years and is expected to increase further in the future [1]. The domestic and commercial sectors account for almost 30% of energy consumption globally [2].

Renewable sources of energy such as wind and solar energy have attracted growing attention recently as alternatives supply options for residential energy requirements [3], even though such renewable energy systems operate intermittently. An on-grid, hybrid, renewable energy-based combined heat and power (CHP) system, in which useful heat and electricity are generated simultaneously, can be used to mitigate this challenge and enhance reliability. The hybrid renewable energy-based CHP system considered here incorporates solar photovoltaic (PV), solar-thermal collector, wind turbine (WT) and hydrogen energy technologies.

Integration options for CHP and renewable energy have been reviewed [4], and optimization studies have been carried out for hybrid renewable energy systems comprised of various energy sources and technologies [5]. For example, studies have been published on hybrid renewable energy systems [6] involving two main energy technologies, such as solar–fuel cell

systems [7], solar-biofuel systems [8], solar-battery systems [9], solar-thermal-PV systems [10], solar micro-generation systems [11], PV-wind systems connected to the electrical grid [12], solar-wind systems for remote regions [13], and wind-fuel cell systems [14]. Results have also been reported for hybrid renewable energy systems involving three primary energy technologies. Examples include PV-wind-hydro-battery systems [15]; PV, wind and storage integration on small islands [16]; wind-PV-battery systems [17]; wind-photovoltaic energy storage and transmission hybrid power systems [18]; grid-connected photovoltaic-wind-biomass power systems [19]; solar-diesel-battery systems [20]; solar-fuel cell-battery systems [21]; solar-wind-battery systems [22]; wind-solar-natural gas [23]; solar-wind-fuel cell systems [24]; solar-wind-diesel-battery systems [25]; and solar-wind-desalination systems [26]. For comparative purposes, it is noted that hybrid energy systems driven by fossil fuels have also been examined, such as fuel cell-gas turbine systems [27].

CHP systems are continually being advanced and applied to various regions. For instance, hybrid energy systems incorporating CHP, solar and battery components have been simulated and technically assessed for three areas in the U.S. [9]. For Malaysia, a hybrid solar-diesel system for buildings designed for zero load rejection was optimized [28], and the viability was assessed of meeting a hospital's energy loads with a cogeneration system incorporating a fuel cell and battery as well as grid-connected PV [21]. That system was designed and techno-economically assessed using the software package HOMER (Hybrid Optimization of Multiple Energy Resources). A hybrid renewable power system for an island in South Korea was also optimized using HOMER [29].

Other investigations have focused on design and operation. For example, the design of a grid-connected solar and wind energy system was optimized and the hybrid system was assessed techno-economically using life cycle costs [30]. Operation strategies were contrasted for satisfying residential energy needs via CHP driven by biomass and natural gas, considering systems comprised of fuel cells, batteries and PV [31]. A tubular type of solid oxide fuel cell was shown to be able to cogenerate [32].

Some recent investigations have focused on sizing and capacity. For instance, a CHP system in a micro-grid was optimally sized using mixed integer linear programming with experimental electric and heat utilization data [33]. The optimal capacities were determined of a CHP system and a boiler for cost effectively meeting building thermal and electrical demands [34]. A genetic algorithm (GA) has been used for optimally sizing an electric generating system with pumped storage [35], while an iterative optimization method was developed for the capacities of components in a hybrid PV-wind-battery system for power generation [36].

Heuristic algorithms are powerful optimization tools based on artificial intelligence that have attracted considerable interest as solvers for complex optimization problems. A study of the literature reveals that some heuristic algorithms and software have been applied to various facets of hybrid systems, such as genetic algorithm [37], multi-objective evolutionary algorithms with genetic algorithms [38], particle swarm optimization [39], multi-objective optimization with particle swarm optimization [40], simulated annealing [41], distributed optimization algorithm [42], tabu search [43], bee algorithm [44], honey bee mating optimization [45], and HOMER [46,47]. It is also found that the PSO algorithm is recognized as one of the most promising heuristic algorithms [48,49], largely because it outperforms other approaches in terms of accuracy. Additionally, the PSO algorithm exhibits high efficiency and fast convergence, as well simplicity in concept and ease of implementation.

Despite the investigations of hybrid renewable energy systems, techno-economic analysis and optimization tools for grid-connected, hybrid solar-wind-fuel cell combined heat and power systems with solar-thermal collectors are not available and needed. In this study, therefore, an optimization approach is developed for a grid-connected hybrid system for residential application, incorporating a solar-wind-fuel cell combined heat and power system integrated with solar-thermal collectors. The optimization approach uses economic parameters for system components. The electrical power production is determined by minimizing cost, the objective function, while accounting for electrical and thermal power tariffs for purchasing and selling. To incent the purchase of electricity from the

hybrid system by the grid, purchasing tariffs are considered to exceed selling tariffs for electricity. However, due to its lower price, thermal energy is sold locally to neighbors rather than to the grid. In addition, the output power values of the PV and WT systems and solar-thermal collector are treated as negative energy loads for the hybrid system, so they are added to the residential load.

In this optimization approach, we consider the costs of electrical power exchange with the grid, supplying energy, the solar-thermal collector, wind power production, solar power generation, heat recovery from the fuel cell, and maintenance. We also propose a modified particle swarm optimization algorithm for the optimization of the grid-connected hybrid solar/wind/fuel cell CHP system with a solar-thermal collector and consider residential uses in the city of Khorasan province, Iran. The results using this approach are compared with those obtained by an efficient metaheuristic optimization method, namely, a genetic algorithm [14], in terms of accuracy and run time. Four cases are considered to determine the optimum combination in terms of lowest cost for the residential load. In Case 1, heat recovery from the fuel cell power plant (FCPP) is not considered, and the residential load is supplied by the electrical grid. Heat recovery from the FCPP is considered in Case 2. In Cases 3 and 4, only the local grid and the FCPP supply the residential load, but the solar collector is not considered in Case 3 and is considered in Case 4.

This article extends the work reported in the literature notably, by presenting several important innovations. Most significantly, an optimization approach is developed for a grid-connected hybrid system for residential applications, incorporating a solar–wind–fuel cell combined heat and power system integrated with solar-thermal collectors. In addition, our study addresses the optimization problem of a hybrid system for a high-energy consuming residential sector, in a realistic manner accounting for technical details of the hybrid system. Furthermore, the modeling and costing of the grid-connected hybrid solar/wind/fuel cell CHP system with a solar-thermal collector is investigated for residential uses in the city of Iran for several scenarios. Particular focus is placed on assessing the potential reduction in the overall cost of the installation under different scenarios. Finally, a new version of the particle swarm optimization algorithm is introduced and used to optimize the grid-connected hybrid system. The results using this approach are compared with those obtained by a genetic algorithm in terms of accuracy and run time.

2. Modeling System Components

The hybrid renewable energy system proposed in this paper is illustrated in Figure 1. The modeling of its primary components is described in this section.

2.1. Photovoltaic System

The output electrical power from PV panels P_{PV} at time t is given by [50]:

$$P_{PV}(t) = R_t \eta_{PV} A_{PV} \quad (1)$$

where

$$\eta_{PV} = \eta_r \eta_{pc} \left[1 - N_T \left((T_{air} + \left[\frac{NOCT - 20}{800} \right] R_t) - T_{ref} \right) \right] \quad (2)$$

Here, A_{PV} denotes the PV area, η_{PV} the efficiency of the PV panels, R_t the solar radiation on a tilted plane module, η_{pc} the power conditioning efficiency, η_r the reference module efficiency, T_{air} the ambient air temperature, T_{ref} the cell temperature at the reference conditions, $NOCT$ the nominal cell operating temperature, and N_T the photovoltaic panel efficiency temperature coefficient. The characteristics of the solar panel are listed in Table 1 [48,51,52].

Table 1. Technical parameters of the PV panel.

Model Name	PV-MF110EC4
Cell type	Polycrystalline silicon 150 mm ²
Rated power (P_{rs})	110 W
Open circuit voltage	21.2 V
T_{ref}	25 °C
N_T	$-3.7 \times 10^{-3} \text{ } ^\circ\text{C}^{-1}$
NOCT	43 °C
Dimensions	56.1" × 25.4" × 2.2" (1425 × 646 × 56 mm)
Weight	25.4 lb (11.5 kg)
Module efficiency	15.9%
$C_{M.C}^{PV}$	0.005 \$/kWh

2.2. Solar-Thermal Collector

The output thermal power from solar-thermal collector P_{SC} at time t is given by [53]:

$$P_{SC}(t) = R_t \eta_{SC} A_{SC} \quad (3)$$

where

$$\eta_{SC} = \eta_{RSC} - \frac{a_1}{800} (T_{SC} - T_{air}) - \frac{a_2}{800} (T_{SC} - T_{air})^2 \quad (4)$$

Here, A_{SC} denotes the solar-thermal collector area, η_{SC} the efficiency of the solar-thermal collector, η_{RSC} the reference solar-thermal collector efficiency, T_{SC} the solar-thermal collector temperature, and a_1 and a_2 the loss coefficients. The characteristics of the solar-thermal collector are listed in Table 2.

Table 2. Technical parameters of the solar-thermal collector.

Model Name	APRICUS APSE-10 Solar Collector
Fluid capacity	290 mL
Optical efficiency	65.6%
a_1 loss	2.063 W/m ² K
a_2 loss	0.006 W/m ² K ²
Gross dry weight	34.8 kg
Maximum pressure	8 bar
C_{MC}^{SC}	0.005 \$/kWh

2.3. Wind Turbine

The output electrical power from wind turbine (XCO2/1 kW) P_{WT} at time t is given by [52,54,55]:

$$P_{WT}(t) = \begin{cases} 0 & V(t) \leq V_i \\ P_r \frac{V(t)-V_i}{V_r-V_i} & V_i < V(t) < V_r \\ P_r & V_r \leq V(t) < V_o \\ 0 & V(t) \geq V_o \end{cases} \quad (5)$$

Here, P_r denotes the wind generator rated power (1 kW here), and V wind speed. In addition, V_i , V_o , and V_r , respectively, are the cut-in (set to 2.5 m/s), cut-out (set to 24 m/s) and rated (set to 11 m/s) linear speeds of the wind turbine. The maintenance cost of the wind turbine (C_{MC}^{WT}) is 0.02 \$/kWh [48,56].

2.4. Fuel Cell

A proton exchange membrane (PEM) fuel cell is utilized in this study. The FCPP produces as much thermal as electrical energy [57,58]. PEM fuel cells have various advantages that make them preferred relative to other fuel cells and permit them to be used in hybrid energy systems [59–62]. A sound

strategy is necessary for management of excess electrical and/or thermal energy. Heat recovery from the stack is not considered for a PEM FCPP due to the low operating temperature. but is considered for the reformer since it operates at relatively a high temperature (360 °C). In this study, the thermal energy load includes space heating and domestic hot water heating, which adds to the PEM FCPP electrical energy loads. The thermal energy recovered from the FCPP supplies the thermal energy load and, if necessary, is provided using of solar collector and natural gas. The part load ratio (PLR) is employed to determine the efficiency as well as the thermal to electrical ratio [57,63]. The PLR can be written as follows:

$$\begin{cases} \text{For } PLR_i < 0.05 \left\{ \begin{array}{l} \eta_i = 0.2716 \\ r_{TE,i} = 0.6801 \end{array} \right. \\ \text{For } PLR_i \geq 0.05 \left\{ \begin{array}{l} \eta_i = 0.9033 \times PLR_i^5 - 2.9996 \times PLR_i^4 + 3.6503 \times PLR_i^3 \\ \quad - 2.0704 \times PLR_i^2 + 0.4623 \times PLR_i + 0.3747 \\ r_{TE,i} = 1.0785 \times PLR_i^4 - 1.9739 \times PLR_i^3 + 1.5005 \times PLR_i^2 \\ \quad - 0.2817 \times PLR_i + 0.6838 \end{array} \right. \end{cases} \quad (6)$$

where η_i is the fuel cell electrical efficiency and $r_{TE,i}$ is the thermal to electrical ratio at interval i .

Details about PEMFCs are provided elsewhere [48,59–62]. Table 3 provides the technical specifications of the fuel cell system [14,48].

Table 3. Technical specifications of the fuel cell.

Specification Type	Specification	Value
Physical	Dimensions ($w \times d \times h$)	21" \times 21.5" \times 26" (53.3 cm \times 54.6 cm \times 66 cm)
	Weight	134–244 lb (61–110 kg)
	Mounting	23" rack mount
Performance	Rated net power	0–2000 W
	Rated current	0–80 A @ 24 VDC / 0–40 A @ 48 VDC
	DC voltage	24 or 48 VDC nominal
Fuel	Composition	Standard industrial grade hydrogen (99.95%)
	Supply pressure to unit	3.5–6 psig (24–41 kPa (g) or 0.24–0.41 bar (g))
	Consumption	30 slpm @ 2000 W
Operation	Ambient temperature	35–115 °F (2–46 °C)
	Relative humidity	0–95% non-condensing
	Altitude	–197 ft to 13,800 ft (–60 m to 4206 m)
	Location	Indoors
Emissions	Water	30 mL/kWh (max.)
	Noise	53 DBA @ 3.28 ft/1 m

3. Optimization

3.1. Objective Function

We consider here the hybrid renewable energy system in Figure 1. In this paper, the model in [14,48,59,61,62] is extended to include wind turbine, solar collector, and photovoltaic costs and revenues, so as to examine whether it is feasible to add wind turbines, solar PV panels and fuel cells to the local electrical grid serving a residential building in Iran. System operating costs can often be reduced through the utilization of such a hybrid renewable energy system and by connecting to the local electrical grid. Two common metaheuristic approaches are used in the optimization. By minimizing system operating and maintenance costs, the output power of the fuel cell is optimized, effectively optimizing the performance of the energy system. The algorithms therefore utilize the local electrical grid for periods of low tariffs and the fuel cell for periods of high tariffs. Note that we focus

in the present study only on optimizing the operating and maintenance costs of the energy system, considering several scenarios.

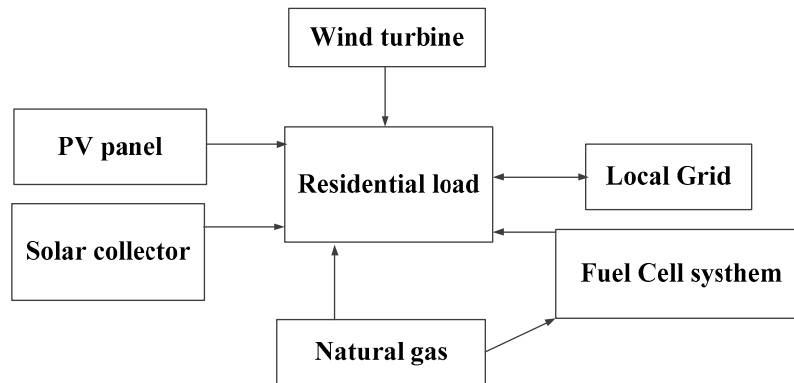


Figure 1. Block diagram of the proposed hybrid energy system.

The objective function for the hybrid renewable energy system is economic. Specifically, the fuel cell is optimized by minimizing the system cost and maximizing the overall system income, causing the algorithms to utilize the fuel cell to satisfy the load when tariffs are high and the local grid when tariffs are low. Extensive information on fuel cell economics is available [59,61,64,65]. The function that is minimized, subject to the constraints outlined later, follows:

$$\text{Objective Function} = \text{Minimize} \sum_i \left(\sum_j \text{Cost}_j - \sum_k \text{Income}_k \right) \quad (7)$$

It is seen that the objective function (in US\$ day⁻¹) for the optimization in essence minimizes the overall operation cost and maximizes the overall system income.

The constraints applied in the optimization include a limited number of fuel cell plant start and stop cycles, the given rated capacity of the fuel cell plant, a limit on the ramp rate, and minimum up and down time limits. These constraints can be expressed as follows [14,48]:

$$\begin{aligned} P_{Min} &\leq P_{FC,i} \leq P_{Max} \\ (T_{i-1}^{off} - MDT)(U_i - U_{i-1}) &\geq 0 \\ (T_{i-1}^{on} - MUT)(U_{i-1} - U_i) &\geq 0 \\ P_{FC,i-1} - P_{FC,i} &\leq \Delta P_d \\ P_{FC,i} - P_{FC,i-1} &\leq \Delta P_u \end{aligned} \quad (8)$$

Here, P_{Min} and P_{Max} , respectively, denote the lower and upper power generating limits (in kW); T^{on} and T^{off} , respectively, denote the fuel cell on and off times; ΔP_u and ΔP_d , respectively, denote the ramp rate upper lower limits; and MDT and MUT , respectively, denote the minimum down-time and up-time. In addition, U is the on-off status for the fuel cell, with $U = 1$ denoting on and $U = 0$ denoting off.

Parameters considered in the case study and their values are given in Table 4 [14,48,66,67]. The monetary units used in this table and elsewhere in the paper are 2013 US dollars. Figure 2 shows the operating strategy employed by the hybrid system.

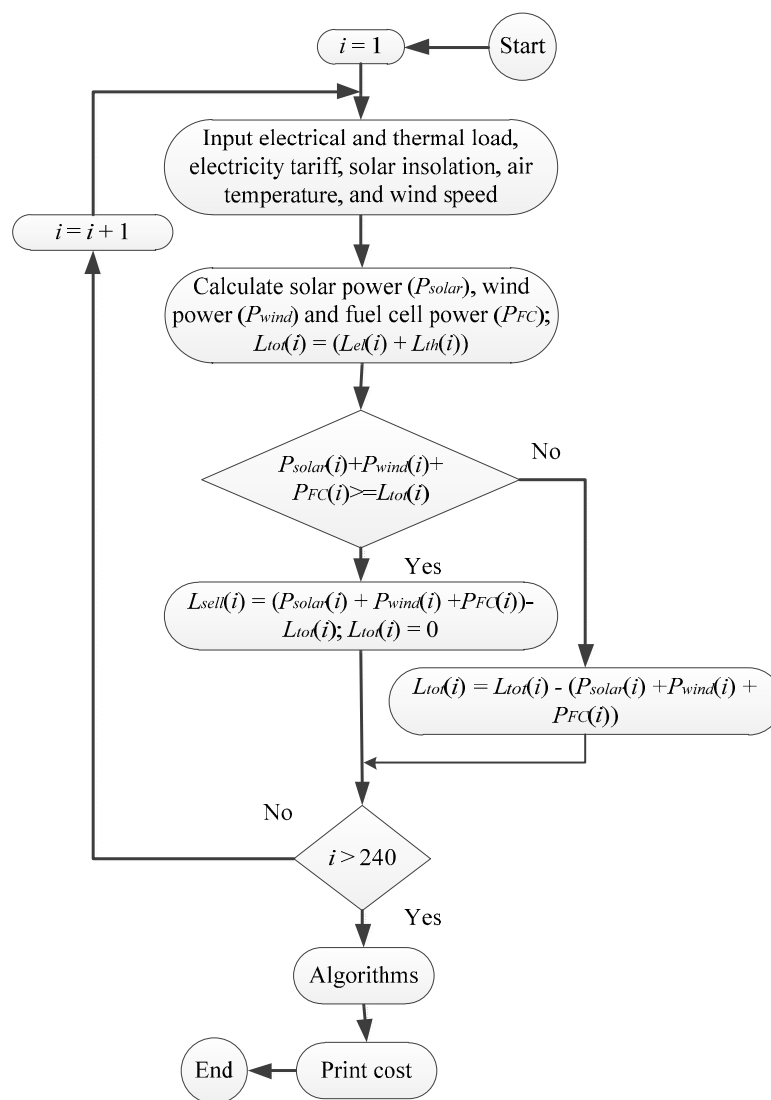


Figure 2. Operating strategy of the proposed system.

Table 4. Parameters for the fuel cell plant and heuristic algorithms.

Parameter	Value	Parameter	Value
P_{Max}	2 kW	ΔP_u	1.7 kW
P_{Min}	0 kW	T	0.1 h
α	\$0.05	N^{Max}	5
β	\$0.15	c_{n2}	0.06 \$/kWh
τ	0.75h	c_f	0.04 \$/kWh
MUT	2	$c_{th,s}$	0.04 \$/kWh
MDT	2	$C_{M.C}^{FC}$	0.005 \$/kWh
ΔP_d	1.5 kW		

3.2. Cost of System

The system cost is comprised of the sum of the costs of fuel, purchased electricity, start-up and maintenance, and gas (for the heating load).

The daily cost of purchasing electricity from the grid can be written as follows:

$$C_{EL,pi} = T \sum_i^{240} c_{el,pi} \max(L_{el,i} - P_{PV,i} - P_{WT,i} - P_{FC,i}, 0) \quad (9)$$

where T denotes the time interval duration (in 0.1 h). In addition, for interval i , $c_{el,pi}$ denotes the electricity purchase cost from the local grid (see values in Figure 3), $L_{el,i}$ denotes the electrical load, $P_{PV,i}$ denotes the PV electricity generation, $P_{WT,i}$ denotes the wind turbine electricity generation, and $P_{FC,i}$ denotes the fuel cell plant electrical power generation.

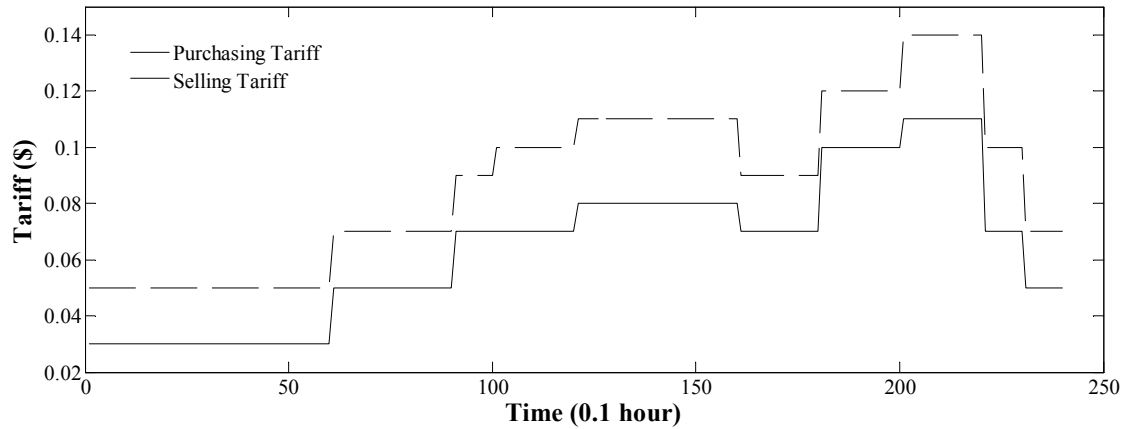


Figure 3. Temporal variation of price for electricity exchange (buying and selling) with the local electrical grid.

The daily fuel cost can be expressed as [48]:

$$C_{fuel} = c_f \cdot T \sum_i \frac{P_{FC,i} + P_a}{\eta_i} \quad (10)$$

where c_f denotes the natural gas price, η_i denotes the fuel cell electrical efficiency, and P_a denotes the power of auxiliary devices.

The start-up cost can be written for the hybrid system as [14]

$$C_{sup} = \alpha + \beta(1 - e^{-\frac{t_{off}}{\tau}}) \quad (11)$$

Here, α denotes the hot start-up costs, β denotes the cold start-up costs, t_{off} denotes the time the FCPP is off, and τ denotes the time constant for FC cooling.

The daily operation and maintenance cost ($C_{O\&M}$) for the main components of the hybrid system can be expressed as:

$$\begin{cases} C_{O\&M}^{PV} = C_{M.C}^{PV} \sum_{i=1}^{240} (P_{PV,i} \cdot T) \\ C_{O\&M}^{SC} = C_{M.C}^{SC} \sum_{i=1}^{240} (P_{SC,i} \cdot T) \\ C_{O\&M}^{WT} = C_{M.C}^{WT} \sum_{i=1}^{240} (P_{WT,i} \cdot T) \\ C_{O\&M}^{FC} = C_{M.C}^{FC} \sum_{i=1}^{240} (P_{FC,i} \cdot T) \end{cases} \quad (12)$$

where $C_{M.C}$ denotes the maintenance cost of the hybrid energy system.

The daily gas cost is can be written as follows:

$$C_{Gas,pi} = c_{n2} T \sum_i^{240} \max(L_{th,i} - P_{th,i} - P_{SC,i}, 0) \quad (13)$$

Here, c_{n2} denotes the fuel price for the residential load, $L_{th,i}$ denotes the thermal load at interval i , and $P_{th,i}$ denotes the heat recovery from FCPP for interval i .

3.3. System Income

Revenues from selling surplus electricity and thermal energy make up the system income. Surplus electricity is available for sale to the local grid when electrical output from the hybrid energy system exceeds electrical demand. The daily income can be written from selling surplus electrical energy as:

$$I_{EL,si} = T \sum_i c_{el,si} \max(P_{FC,i} + P_{WT,i} + P_{PV,i} - L_{el,i}, 0) \quad (14)$$

and from selling surplus thermal energy as

$$I_{TH,si} = c_{th,s} T \sum_i \max(P_{th,i} + P_{SC,i} - L_{th,i}, 0) \quad (15)$$

Here, $c_{el,si}$ denotes the selling electricity price (see Figure 3).

4. Metaheuristic Optimization Approaches

Minimization of the total cost is usually important for energy systems, including the hybrid renewable energy system considered here. One approach for minimizing the total system cost is modified particle swarm optimization (PSO). The results from this approach are compared with those from a genetic algorithm, an efficient metaheuristic optimization method [14]. Such population-based heuristic optimization approaches emulate animal behavior and natural selection. Various factors affect the optimization algorithm's performance significantly. For particle swarm optimization, the factors include population size and the number of iterations for every particle. For the GA, the factors include population size and the number of iterations for every chromosome. There exist 240 variables over a 24 h period, for the six-minute time intervals used here. Every particle has 240 features in PSO, and each chromosome is separated into 240 genes in GA. Consequently the particle in PSO is analogous to the chromosome (population member) in GA.

4.1. Original Particle Swarm Optimization

The original approach for particle swarm optimization is founded on movements of birds and fish as well as their behaviors [68–70]. The calculations involved in PSO are straightforward relative to those for other methods, and the steps in standard PSO are provided in Figure 4. The updating for particles involves the following steps:

$$v_i^{k+1} = w \cdot v_i^k + c_1 \cdot r_1 \cdot (p_{best}^k - x_i^k) + c_2 \cdot r_2 \cdot (g_{best}^k - x_i^k) \quad (16)$$

$$x_i^{k+1} = x_i^k + v_i^{k+1} \quad (17)$$

where v_i^k denotes the component in dimension d of the i th particle velocity for iteration k and x_i^k the component in dimension d of the i th particle position for iteration k . In addition, p_{best} denotes the best position achieved yet by particle i and g_{best} the best position found by neighbors of particle i . Furthermore, w denotes the inertia weight, r_1 and r_2 denote random factors between 0 and 1 and c_1 and c_2 denote learning factors that control the importance of the best solution ever found by i th particle

and the best solution found by the population, respectively. The values of c_1 and c_2 are both fixed at 2, and the value of w is fixed at unity. Additional details on this algorithm are available elsewhere [51,69].

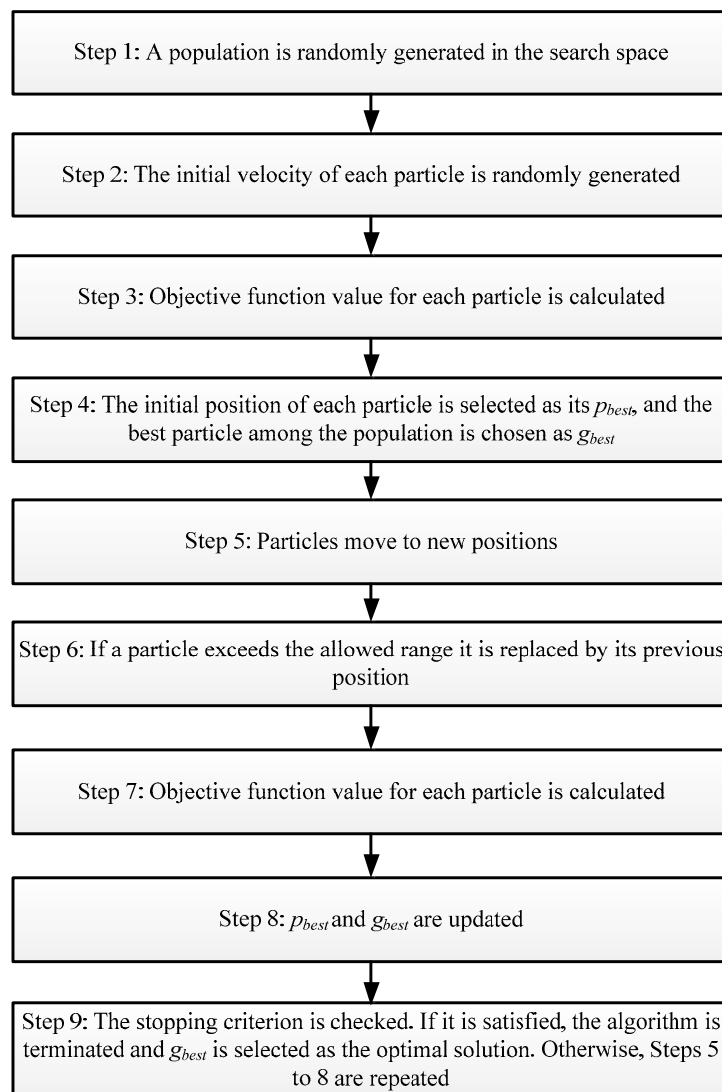


Figure 4. Steps in standard particle swarm optimization implementation.

4.2. Modified Particle Swarm Optimization

A variant of PSO with the speed clamping effect avoids the phenomenon of “swarm explosion” [51], which is needed since, without a limit on the maximum velocities of particles, a simple one-dimensional analysis of the swarm dynamic shows that the particle velocity can grow without limit while the particle oscillating around an optimum increases its distance from the optimum in each iteration. Additional studies demonstrated that this approach was inadequate to properly control particle velocities. Compared to evolutionary optimization [71], PSO rapidly identifies the region of the optimum but has difficulty adjusting the velocity to lower values to perform a fine search of the area. To achieve this aim, the particle swarm optimization algorithm with a constriction factor can be used, in which the updating pattern of each particle velocity proceeds as follows:

$$v_i^{k+1} = w_{CF}^k \cdot v_i^k + C_1 \cdot r_1 (p_{best}^k - x_i^k) + C_2 \cdot r_2 (g_{best}^k - x_i^k) \quad (18)$$

where

$$w_{CF} = w \cdot CF \quad (19)$$

Here, C_1 and C_2 denote cognitive and social parameters, respectively, which affect the algorithm's convergence speed and ability to locate the optimum. However, different values may prove suitable for different problems, so these parameters can be expressed as [72]:

$$\begin{aligned} C_1 &= CF \cdot ph_{i1} \\ C_2 &= CF \cdot ph_{i2} \end{aligned} \quad (20)$$

where

$$CF = \frac{2}{|ph_i - 2 + \sqrt{ph_i^2 - 4 \times ph_i}|} \quad (21)$$

$$\begin{aligned} ph_i &= ph_{i1} + ph_{i2} \\ ph_{i1} + ph_{i2} &\geq 4 \end{aligned} \quad (22)$$

Here, ph_i and CF denote coefficient of contraction and constriction factor respectively, and ph_{i1} and ph_{i2} are positive numbers, set at 2.05.

5. Results and Discussions

The study uses annual measured solar insolation, air temperature, and wind speed data for Khorasan province, Iran (latitude = 36.35° N, longitude = 56.83° E, and altitude = 912 m above sea level) [73], which are shown in Figure 5.

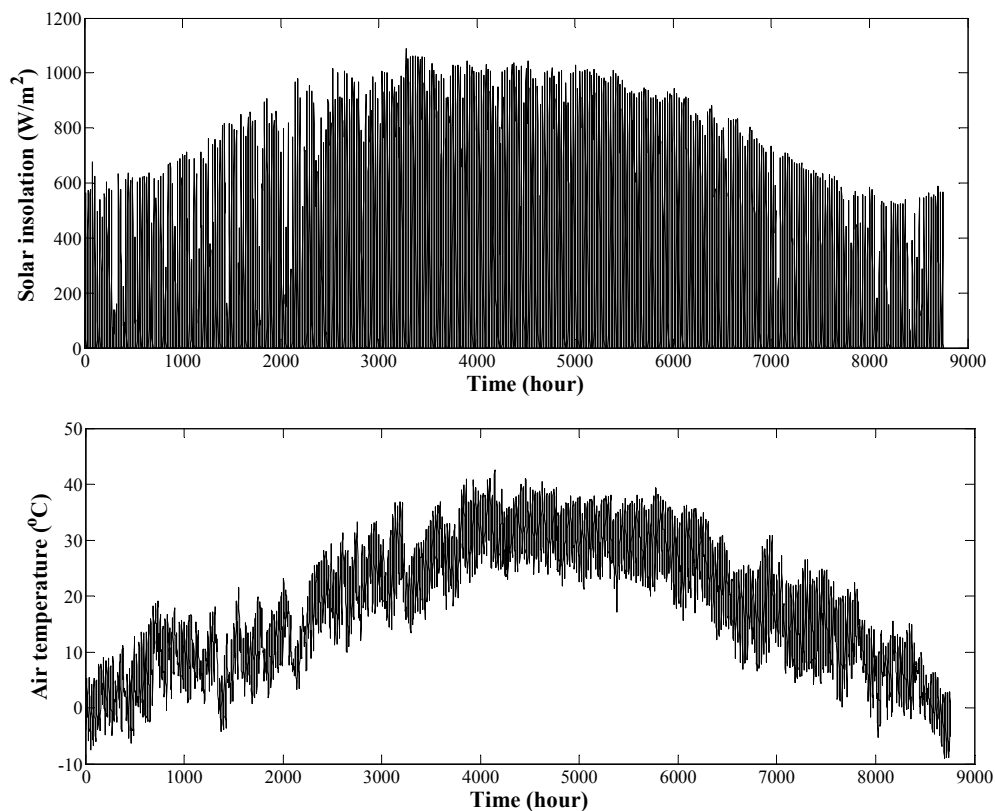


Figure 5. Cont.

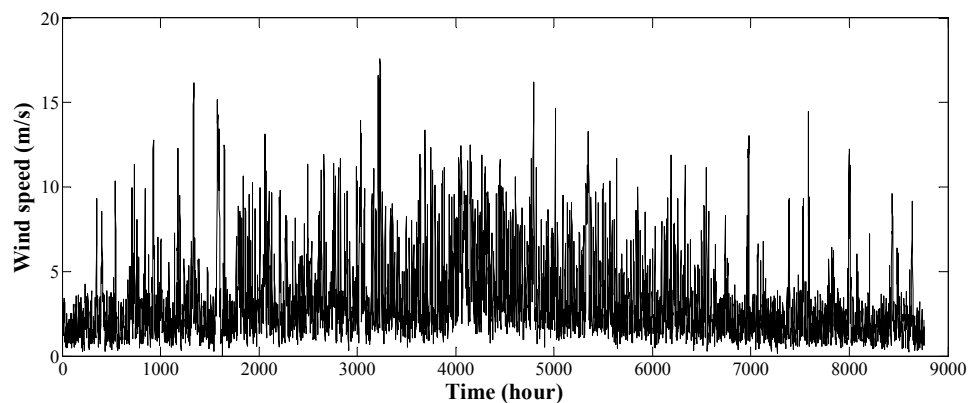


Figure 5. Annual solar insolation, air temperature, and wind speed data for Khorasan, Iran [73].

5.1. Methodology

The optimization methodology proposed here is implemented in MATLAB. Average daily residential thermal and electrical loads are shown in Figure 6, for periods of 0.1 h (6 min) [14,48]. Annual domestic hot water heating and winter space heating make up the thermal load. Four supply cases for the residential electrical and thermal loads are considered, in order to choose the optimum combination of technologies for the hybrid renewable energy system based on lowest cost. The residential loads (electrical and thermal) are met by the electrical grid and natural gas heating in the base case (i.e., without a hybrid energy system employed), by the hybrid energy system and the electrical grid in Cases 1 and 2, and by the solar-thermal collector, fuel cell, and electrical grid in Case 3 and Case 4. The daily electrical and thermal energy supply cost in the base case is \$5.71.

Each algorithm is independently run 20 times. Table 5 lists the results obtained by the algorithms for all cases considered. Note that component capital costs are not accounted for. Table 5 provides the maximum, minimum and mean of fitness function values for the runs (Max., Min. and Mean, respectively), the standard deviation for each of those values (STD), and the simulation time indexes (ST). Based on the Min. values in Table 5, Table 6 lists the daily system cost and income for all cases. For example, in Case 2, the relative error between the Min. index of MPSO and GA, $\left| \frac{Min_{MPSO} - Min_{GA}}{Min_{MPSO}} \right| \times 100$, is 14%. The performance is more beneficial with MPSO than GA, in terms of other indexes, including Mean, Max., STD and ST index. In Case 3, the relative error between the Min. index of MPSO and GA is 0.20%, and between the Max. index of MPSO and GA is 0.07%.

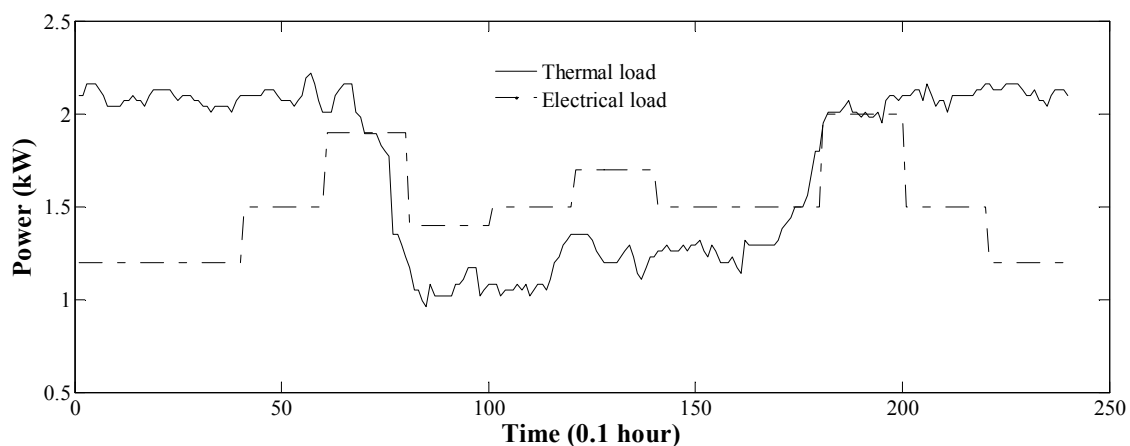


Figure 6. Temporal variation of thermal and electrical energy demands.

Table 5. Results from algorithms over 20 runs for all cases and corresponding statistics.

Index	Algorithm	Fitness Function Value				ST (s)
		Min (\$)	Max (\$)	Mean (\$)	STD (\$)	
Case 1	GA [14]	5.408	5.419	5.412	0.0036	1317.67
	MPSO	5.424	5.445	5.435	0.0061	50.65
Case 2	GA [14]	4.255	4.262	4.259	0.0024	1485.79
	MPSO	4.249	4.256	4.252	0.0024	247.21
Case 3	GA [14]	4.610	4.618	4.612	0.0024	1508.13
	MPSO	4.601	4.615	4.606	0.0042	247.80
Case 4	GA [14]	4.448	4.452	4.450	0.0011	1471.80
	MPSO	4.443	4.450	4.448	0.0026	250.38

Table 6. Daily system cost and income of (in \$) for all cases.

Economic Parameter	Case 1		Case 2		Case 3		Case 4	
	MPSO	GA	MPSO	GA	MPSO	GA	MPSO	GA
Hydrogen cost	1.310	1.269	3.252	3.240	3.410	3.471	3.384	3.384
Electricity purchase cost	1.621	1.636	0.388	0.376	0.421	0.389	0.440	0.434
Gas purchase cost	2.455	2.455	0.915	0.930	0.947	0.916	0.894	0.888
Start-up cost	0	0	0	0	0	0	0	0
Electricity selling income	0.012	0.003	0.252	0.234	0.143	0.138	0.142	0.132
Thermal selling income	0	0	0.104	0.105	0.033	0.027	0.134	0.126
Total cost	5.424	5.408	4.249	4.255	4.601	4.610	4.443	4.450
Reduction in daily cost relative to base case	0.286	0.302	1.461	1.455	1.109	1.100	1.267	1.260

5.2. Cases

In Case 1, where the local grid and a hybrid energy system supply the electrical load while the thermal energy load is supplied with natural gas but heat recovery from fuel cell and solar-thermal collector is not considered, the minimum daily cost to supply electrical and thermal energy (Min. index) is \$5.408, as found by the GA. The reduction in daily cost relative to base case is \$0.302, which translates to a saving of \$111 per year. However, the Min. index obtained with the MPSO is \$5.424. In addition, the electricity and gas purchase costs are \$1.621 and \$2.455 respectively with the MPSO, while the electricity selling income is \$0.012.

In case 2, heat recovery from the FC is used. If the heat recovery exceeds the thermal load the surplus is sold to neighbors to lower the system cost. If the thermal load exceeds the heat recovery, natural gas is used to make up the shortfall. In this case, the Min. index which has been found by MPSO algorithm (\$4.249) is less than that found by the GA (\$4.255). In addition, the performance of the algorithms can be ranked as MPSO followed by GA in this case, based on the Min., Max., Mean, and ST indexes. It is seen in the optimized system that, on a daily basis, the electricity selling income is \$0.252, the thermal selling income is \$0.104, and the reduction in cost relative to base case is \$1.461. Optimal daily values of the electricity and gas purchase costs are seen to be \$0.388 and \$0.915, respectively, and the reduction in electricity purchase cost and gas purchase cost, relative to first case, are \$1.233 and \$1.54, respectively. As a result, this case is more beneficial than the previous strategy.

Figure 7 illustrates the electrical generation and electrical loads obtained with the modified particle swarm optimization algorithm. The electrical trade with the electrical grid is shown for the modified particle swarm optimization algorithm in Figure 8. The system is observed to purchase energy during periods of low tariffs, and to sell energy during periods of high tariffs (especially when there are high thermal loads).

Figure 9 illustrates the heat recovery rate and the thermal load obtained with the modified particle swarm optimization algorithm. The system is observed to meet the thermal load at the low thermal

load periods, i.e., at time 80–180 (08:00–18:00). However, for periods of low tariffs, the system satisfies the electrical and thermal energy loads respectively using the electrical grid and natural gas.

Comparing the first and second cases illustrates that recovering thermal energy from the FCPP leads to lower costs and higher savings relative to meeting the thermal load with gas, i.e., heating with gas has a higher total cost than heating via heat recovery. Cases 1 and 2 thereby demonstrate the effect of heat load on optimal FCPP operation.

In Case 3, the electrical load is met by the electrical grid and the fuel cell power plant with FCPP heat recovery. The minimal daily cost of system (Min. index) is \$4.601, as obtained with the MPSO. Based on the other indexes the ranking of the algorithms is MPSO and GA. In this case, the reduction in daily cost relative to base case is \$1.109, while the electricity selling income is \$0.143 and the thermal selling income is \$0.033 and the electricity and gas purchase costs are \$0.421 and \$0.947, respectively.

In Case 4, the electrical load is met by the fuel cell power plant, with FCPP heat recovery, the solar-thermal collector, and the electrical grid. It is observed that the minimal daily cost of system (Min. index) is \$4.443, as obtained with the MPSO. It is seen that, in the optimized system, the electricity selling income is \$0.142, the thermal selling income is \$0.134, and the reduction in daily cost relative to base case is \$1.267, and the increase in thermal selling income, relative to Case 3, is \$0.11. Optimal daily values of the electricity and gas purchase costs are found to be \$0.440 and \$0.894, respectively, and the reduction in gas purchase cost, relative to Case 3, is \$0.022. Consequently, this case is more beneficial than the third case. Finally, it is observed that the hybrid energy system having multiple energy sources outperforms the systems with single energy sources. Figure 10 shows the convergence process of the modified particle swarm optimization algorithm for one of the runs of Cases 1–4. In Figure 10, the best total cost is plotted vs. iteration number. The reduction in the total cost during the iterations can be seen.

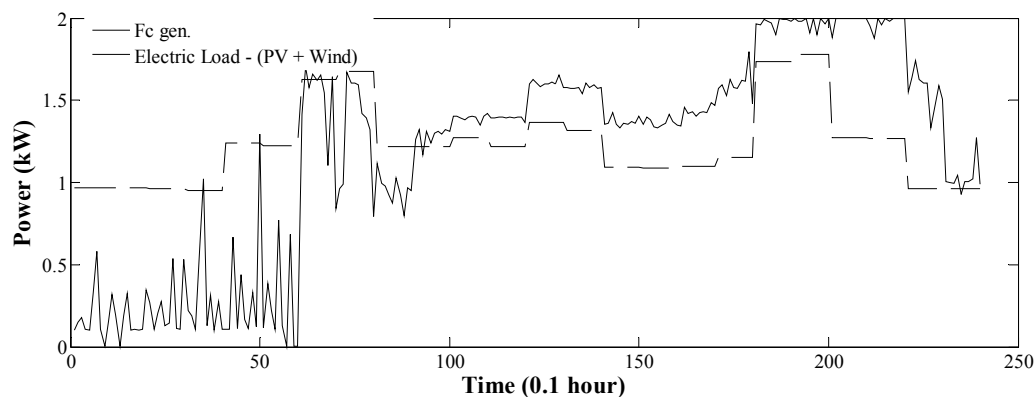


Figure 7. Fuel cell power plant generation of modified particle swarm optimization in case 2.

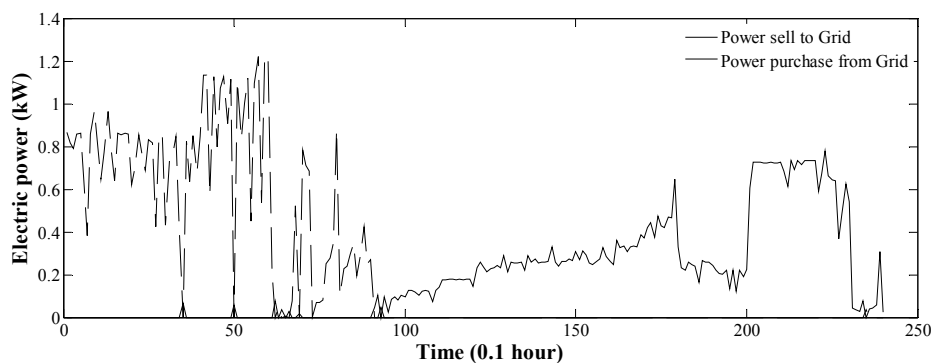


Figure 8. Electrical power trade with electrical grid of modified particle swarm optimization in Case 2.

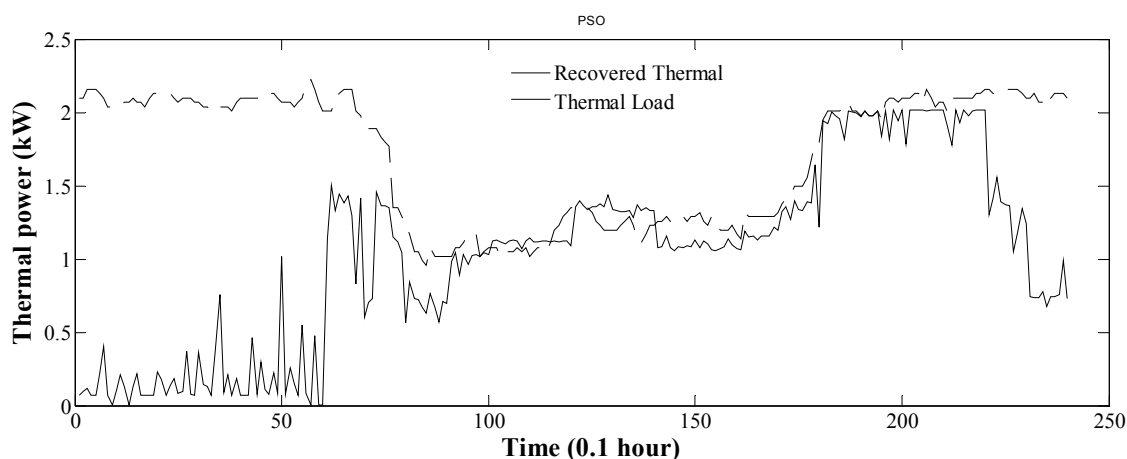


Figure 9. Heat recovery from Fuel cell power plant and thermal energy load of modified particle swarm optimization in Case 2.

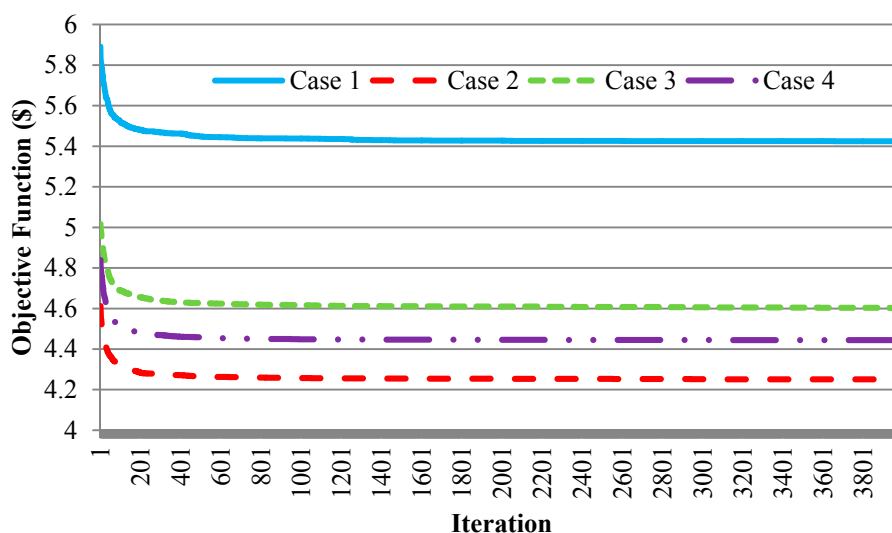


Figure 10. Reduction of total cost during iterations of modified particle swarm optimization for Cases 1–4.

6. Conclusions

The optimal operation cost of grid-connected hybrid energy systems to supply both electricity and heat to a residential application is determined. For this study, a photovoltaic–wind turbine–fuel cell–solar–thermal collector is designed and an economic model is introduced to supply of residential thermal and electrical loads via a grid-connected hybrid system. A modified particle swarm optimization is proposed for solving the optimization problem. The results are compared with those obtained by a genetic algorithm in terms of accuracy and run time. The photovoltaic–wind turbine–fuel cell–solar–thermal collector system is designed to meet the full demand and four possible cases are considered and assessed. The simulation results showed that hybrid energy systems are more cost effective than the simple energy systems with one energy input, suggesting that hybrid energy system are superior options. The results also demonstrate that the reduction in daily cost relative to the base case via the modified particle swarm optimization algorithm for Cases 1–4 are 5.01%, 25.59%, 19.42%, and 22.19%, respectively. Based on the minimum of the objective function values, the suggested cases can be listed in rank order as follows: Case 2, Case 4, Case 3, and Case 1. Moreover, the results for Case 2 exhibit a better overall demand (electricity and heat) supply than the first case

due to its operational advantage. In addition, a comparison of Cases 3 and 4 demonstrates that adding a solar-thermal collector is an effective strategy, and a comparison of Cases 1 and 2 demonstrates that adding solar and wind energy is an effective strategy. Of the cases considered, the Case 2 is the most cost-effective and reliable. The performance of the modified particle swarm optimization method appears to be advantageous to that of the genetic algorithm.

Author Contributions: A.M. developed the model development process and analyzed the final simplified model presented in this paper under the guidance of F.P. and M.R. All authors have read and approved the final manuscript.

Conflicts of Interest: The authors declare no conflict of interest.

Nomenclature

A_{PV}	PV area (m^2)	P_{WT}	output electrical power from wind turbine (kW)
A_{SC}	solar-thermal collector area (m^2)	P_r	wind generator rated power (kW)
a_1	loss coefficient (W/m^2K)	P_{Min}	minimum power generation limit (kW)
a_2	loss coefficient (W/m^2K^2)	$P_{th,i}$	recovered thermal energy of FCPP at interval i (kW)
C_{fuel}	daily cost of fuel (\$)	P_a	electrical power used by auxiliary devices (kW)
c_f	natural gas cost for FCPP (\$/kWh)	p_{best}	best position achieved by particle i
C_{sup}	hybrid system start-up cost (\$)	PLR	part load ratio
$C_{O\&M}$	operation and maintenance costs (\$)	$r_{TE,i}$	thermal to electrical ratio at interval i
$C_{M,C}$	maintenance cost of hybrid energy system (\$/kWh)	r_1, r_2	random factors between 0 and 1
$C_{Gas,pi}$	daily cost of purchasing gas (\$)	R_t	solar radiation on a tilted plane module (kW/m^2)
c_{n2}	load fuel price (\$/kWh)	T_{SC}	solar-thermal collector temperature ($^{\circ}C$)
$C_{EL,pi}$	daily electrical energy purchasing cost from the grid (\$)	T_{air}	ambient air temperature ($^{\circ}C$)
$c_{el,pi}$	electricity purchasing tariff from the grid at interval i (\$/kWh)	T_{ref}	cell temperature at the reference conditions ($^{\circ}C$)
$c_{el,si}$	electricity selling tariff (\$/kWh)	T	time interval length (h)
$c_{th,s}$	thermal energy selling price (\$/kWh)	t_{off}	time FCPP is off (h)
c_1, c_2	constant weight factors	U	fuel cell on–off status ($U = 1$ when running and $U = 0$ when stopped)
C_1	cognitive parameter	v_i^k	component in dimension d of i th particle velocity in iteration k
C_2	social parameter	V	wind speed (m/s)
g_{best}	best position found by neighbours of particle i	V_i	cut in wind speed (m/s)
$I_{EL,Si}$	daily income from selling electric energy to the grid (\$)	V_o	cut out wind speed (m/s)
$I_{TH,Si}$	daily income from sale of thermal energy (\$)	V_r	rated wind speed (m/s)
$L_{el,i}$	electricity load demand at interval i (kW)	w	positive inertia weight
$L_{th,i}$	thermal demand at interval i (kW)	x_i^k	component in dimension d of i th particle position in iteration k
MUT	minimum up-time	ΔP_U	ramp rate upper limit (kW)
MDT	minimum down-time	ΔP_D	ramp rate lower limit (kW)
$N^{start-stop}$	number of starts–stops of FCPP	α	hot start-up cost (\$)
N^{Max}	maximum number of starts–stops	β	cold start-up cost (\$)
$NOCT$	nominal cell operating temperature ($^{\circ}C$)		

N_T	photovoltaic panel efficiency temperature coefficient ($^{\circ}\text{C}^{-1}$)	η_r	reference module efficiency (%)
P_{PV}	power generated by each solar panel (kW)	η_{pc}	power conditioning efficiency (%)
P_{rs}	PV rated power (kW)	τ	FC cooling time constant (h)
P_{Max}	maximum power generation limit (kW)	η_i	fuel cell electrical efficiency (%)
P_{SC}	output thermal power from solar-thermal collector (kW)	η_{PV}	efficiency of the PV panel (%)
$P_{FC,i}$	FCPP electrical power production at interval i (kW)	η_{SC}	efficiency of the solar-thermal collector (%)
		η_{RSC}	reference solar-thermal collector efficiency (%)

References

- Ren, H.; Wu, Q.; Gao, W.; Zhou, W. Optimal operation of a grid-connected hybrid PV/fuel cell/battery energy system for residential applications. *Energy* **2016**, *113*, 702–712. [\[CrossRef\]](#)
- Moghaddam, I.G.; Saniei, M.; Mashhour, E. A comprehensive model for self-scheduling an energy hub to supply cooling, heating and electrical demands of a building. *Energy* **2016**, *94*, 157–170. [\[CrossRef\]](#)
- Maleki, A.; Pourfayaz, F. Sizing of stand-alone photovoltaic/wind/diesel system with battery and fuel cell storage devices by harmony search algorithm. *J. Energy Storage* **2015**, *2*, 30–42. [\[CrossRef\]](#)
- Raj, N.T.; Iniyar, S.; Goic, R. A review of renewable energy based cogeneration technologies. *Renew. Sustain. Energy Rev.* **2011**, *15*, 3640–3648. [\[CrossRef\]](#)
- Ye, J.; Yuan, R. Integrated Natural Gas, Heat, and Power Dispatch Considering Wind Power and Power-to-Gas. *Sustainability* **2017**, *9*, 602. [\[CrossRef\]](#)
- Kim, J.; Kim, E.-J. Simplified Method of Optimal Sizing of a Renewable Energy Hybrid System for Schools. *Sustainability* **2016**, *8*, 1134. [\[CrossRef\]](#)
- Ahmadi, P.; Dincer, I.; Rosen, M.A. Transient thermal performance assessment of a hybrid solar-fuel cell system in Toronto, Canada. *Int. J. Hydrogen Energy* **2015**, *40*, 7846–7854. [\[CrossRef\]](#)
- Maleki, A.; Hajinezhad, A.; Rosen, M.A. Modeling and optimal design of an off-grid hybrid system for electricity generation using various biodiesel fuels: A case study for Davarzan, Iran. *Biofuels* **2016**, *7*, 669–712. [\[CrossRef\]](#)
- Shah, K.K.; Mundada, A.S.; Pearce, J. Performance of US hybrid distributed energy systems: Solar photovoltaic, battery and combined heat and power. *Energy Convers. Manag.* **2015**, *105*, 71–80. [\[CrossRef\]](#)
- Herrando, M.; Markides, C.N. Hybrid PV and solar-thermal systems for domestic heat and power provision in the UK: Techno-economic considerations. *Appl. Energy* **2016**, *161*, 512–532. [\[CrossRef\]](#)
- Brandoni, C.; Renzi, M. Optimal sizing of hybrid solar micro-CHP systems for the household sector. *Appl. Therm. Eng.* **2015**, *75*, 896–907. [\[CrossRef\]](#)
- Bernal-Agustín, J.L.; Dufo-López, R. Techno-economical optimization of the production of hydrogen from PV-Wind systems connected to the electrical grid. *Renew. Energy* **2010**, *35*, 747–758. [\[CrossRef\]](#)
- Bentouba, S.; Bourouis, M. Feasibility study of a wind-photovoltaic hybrid power generation system for a remote area in the extreme south of Algeria. *Appl. Therm. Eng.* **2016**, *99*, 713–719. [\[CrossRef\]](#)
- Ranjbar, M.R.; Mohammadian, M. Economic analysis of hybrid system consists of fuel cell and wind based CHP system for supplying grid-parallel residential load. *Energy Build.* **2014**, *68*, 476–487. [\[CrossRef\]](#)
- Brenna, M.; Foiadelli, F.; Longo, M.; Abegaz, T.D. Integration and Optimization of Renewables and Storages for Rural Electrification. *Sustainability* **2016**, *8*, 982. [\[CrossRef\]](#)
- Mendoza-Vizcaino, J.; Sumper, A.; Galceran-Arellano, S. PV, Wind and Storage Integration on Small Islands for the Fulfilment of the 50–50 Renewable Electricity Generation Target. *Sustainability* **2017**, *9*, 905. [\[CrossRef\]](#)
- Kim, H.; Baek, S.; Choi, K.H.; Kim, D.; Lee, S.; Kim, D.; Chang, H.J. Comparative Analysis of On-and Off-Grid Electrification: The Case of Two South Korean Islands. *Sustainability* **2016**, *8*, 350. [\[CrossRef\]](#)
- Ji, H.; Niu, D.; Wu, M.; Yao, D. Comprehensive Benefit Evaluation of the Wind-PV-ES and Transmission Hybrid Power System Consideration of System Functionality and Proportionality. *Sustainability* **2017**, *9*, 65. [\[CrossRef\]](#)

19. González, A.; Riba, J.-R.; Rius, A. Optimal sizing of a hybrid grid-connected photovoltaic–wind–biomass power system. *Sustainability* **2015**, *7*, 12787–12806. [[CrossRef](#)]
20. Sichilalu, S.M.; Xia, X. Optimal energy control of grid tied PV–diesel–battery hybrid system powering heat pump water heater. *Sol. Energy* **2015**, *115*, 243–254. [[CrossRef](#)]
21. Isa, N.M.; Das, H.S.; Tan, C.W.; Yatim, A.; Lau, K.Y. A techno-economic assessment of a combined heat and power photovoltaic/fuel cell/battery energy system in Malaysia hospital. *Energy* **2016**, *112*, 75–90. [[CrossRef](#)]
22. Ma, T.; Yang, H.; Lu, L. A feasibility study of a stand-alone hybrid solar–wind–battery system for a remote island. *Appl. Energy* **2014**, *121*, 149–158. [[CrossRef](#)]
23. Zhang, X.; Ma, Y.; Ye, B.; Chen, Z.-M.; Xiong, L. Feasibility analyses of developing low carbon city with hybrid energy systems in China: The case of Shenzhen. *Sustainability* **2016**, *8*, 452. [[CrossRef](#)]
24. Sichilalu, S.; Tazvinga, H.; Xia, X. Optimal control of a fuel cell/wind/PV/grid hybrid system with thermal heat pump load. *Sol. Energy* **2016**, *135*, 59–69. [[CrossRef](#)]
25. Shin, Y.; Koo, W.Y.; Kim, T.H.; Jung, S.; Kim, H. Capacity design and operation planning of a hybrid PV–wind–battery–diesel power generation system in the case of Deokjeok Island. *Appl. Therm. Eng.* **2015**, *89*, 514–525. [[CrossRef](#)]
26. Caldera, U.; Bogdanov, D.; Breyer, C. Local cost of seawater RO desalination based on solar PV and wind energy: A global estimate. *Desalination* **2016**, *385*, 207–216. [[CrossRef](#)]
27. Buonomano, A.; Calise, F.; d’Accadia, M.D.; Palombo, A.; Vicidomini, M. Hybrid solid oxide fuel cells–gas turbine systems for combined heat and power: A review. *Appl. Energy* **2015**, *156*, 32–85. [[CrossRef](#)]
28. Khatib, T.; Mohamed, A.; Sopian, K.; Mahmoud, M. Optimal sizing of building integrated hybrid PV/diesel generator system for zero load rejection for Malaysia. *Energy Build.* **2011**, *43*, 3430–3435. [[CrossRef](#)]
29. Baek, S.; Kim, H.; Chang, H.J. Optimal hybrid renewable power system for an emerging island of South Korea: The case of Yeongjong Island. *Sustainability* **2015**, *7*, 13985–14001. [[CrossRef](#)]
30. Caballero, F.; Sauma, E.; Yanine, F. Business optimal design of a grid-connected hybrid PV (photovoltaic)-wind energy system without energy storage for an Easter Island’s block. *Energy* **2013**, *61*, 248–261. [[CrossRef](#)]
31. Pantaleo, A.M.; Camporeale, S.; Shah, N. Natural gas–biomass dual fuelled microturbines: Comparison of operating strategies in the Italian residential sector. *Appl. Therm. Eng.* **2014**, *71*, 686–696. [[CrossRef](#)]
32. Ullah, K.; Akikur, R.; Ping, H.; Saidur, R.; Hajimolana, S.; Hussain, M. An experimental investigation on a single tubular SOFC for renewable energy based cogeneration system. *Energy Convers. Manag.* **2015**, *94*, 139–149. [[CrossRef](#)]
33. Costa, A.; Fichera, A. A mixed-integer linear programming (MILP) model for the evaluation of CHP system in the context of hospital structures. *Appl. Therm. Eng.* **2014**, *71*, 921–929. [[CrossRef](#)]
34. Moradi, M.H.; Hajinazari, M.; Jamasb, S.; Paripour, M. An energy management system (EMS) strategy for combined heat and power (CHP) systems based on a hybrid optimization method employing fuzzy programming. *Energy* **2013**, *49*, 86–101. [[CrossRef](#)]
35. Papaefthymiou, S.V.; Papathanassiou, S.A. Optimum sizing of wind-pumped-storage hybrid power stations in island systems. *Renew. Energy* **2014**, *64*, 187–196. [[CrossRef](#)]
36. Kaabeche, A.; Belhamel, M.; Ibtouen, R. Sizing optimization of grid-independent hybrid photovoltaic/wind power generation system. *Energy* **2011**, *36*, 1214–1222. [[CrossRef](#)]
37. Bilal, B.O.; Sambou, V.; Ndiaye, P.; Kébé, C.; Ndong, M. Optimal design of a hybrid solar–wind–battery system using the minimization of the annualized cost system and the minimization of the loss of power supply probability (LPSP). *Renew. Energy* **2010**, *35*, 2388–2390. [[CrossRef](#)]
38. Dufo-López, R.; Bernal-Agustín, J.L. Multi-objective design of PV-wind-diesel-hydrogen-battery systems. *Renew. Energy* **2008**, *33*, 2559–2572. [[CrossRef](#)]
39. Kaviani, A.K.; Riahy, G.; Kouhsari, S.M. Optimal design of a reliable hydrogen-based stand-alone wind/PV generating system, considering component outages. *Renew. Energy* **2009**, *34*, 2380–2390. [[CrossRef](#)]
40. Sharafi, M.; ELMekkawy, T.Y. Multi-objective optimal design of hybrid renewable energy systems using PSO-simulation based approach. *Renew. Energy* **2014**, *68*, 67–79. [[CrossRef](#)]
41. Ekren, O.; Ekren, B.Y. Size optimization of a PV/wind hybrid energy conversion system with battery storage using simulated annealing. *Appl. Energy* **2010**, *87*, 592–598. [[CrossRef](#)]

42. Longe, O.M.; Ouahada, K.; Rimer, S.; Ferreira, H.C.; Vinck, A.H. Distributed optimisation algorithm for demand side management in a grid-connected smart microgrid. *Sustainability* **2017**, *9*, 1088. [CrossRef]
43. Yoza, A.; Yona, A.; Senjyu, T.; Funabashi, T. Optimal capacity and expansion planning methodology of PV and battery in smart house. *Renew. Energy* **2014**, *69*, 25–33. [CrossRef]
44. Maleki, A. Design and optimization of autonomous solar-wind-reverse osmosis desalination systems coupling battery and hydrogen energy storage by an improved bee algorithm. *Desalination* **2017**. accepted.
45. Niknam, T.; Fard, A.K.; Seifi, A. Distribution feeder reconfiguration considering fuel cell/wind/photovoltaic power plants. *Renew. Energy* **2012**, *37*, 213–225. [CrossRef]
46. Baek, S.; Kim, H.; Chang, H.J. Optimal Hybrid Renewable Airport Power System: Empirical Study on Incheon International Airport, South Korea. *Sustainability* **2016**, *8*, 562. [CrossRef]
47. Vallati, A.; Grignaffini, S.; Romagna, M. A new method to energy saving in a micro grid. *Sustainability* **2015**, *7*, 13904–13919. [CrossRef]
48. Ranjbar, M.R.; Kouhi, S. Sources' Response for supplying energy of a residential load in the form of on-grid hybrid systems. *Int. J. Electr. Power Energy Syst.* **2015**, *64*, 635–645. [CrossRef]
49. Javadi, M.R.; Mazlumi, K.; Jalilvand, A. Application of GA, PSO and ABC in optimal design of a stand-alone hybrid system for north-west of Iran. In Proceedings of the 2011 7th International Conference on Electrical and Electronics Engineering (ELECO), Bursa, Turkey, 1–4 December 2011.
50. Behzadi, M.S.; Niasati, M. Comparative performance analysis of a hybrid PV/FC/battery stand-alone system using different power management strategies and sizing approaches. *Int. J. Hydrogen Energy* **2015**, *40*, 538–548. [CrossRef]
51. Maleki, A.; Ameri, M.; Keynia, F. Scrutiny of multifarious particle swarm optimization for finding the optimal size of a PV/wind/battery hybrid system. *Renew. Energy* **2015**, *80*, 552–563. [CrossRef]
52. Maleki, A.; Pourfayaz, F.; Ahmadi, M.H. Design of a cost-effective wind/photovoltaic/hydrogen energy system for supplying a desalination unit by a heuristic approach. *Sol. Energy* **2016**, *139*, 666–675. [CrossRef]
53. Nguyen, H.T.; Nguyen, D.T.; Le, L.B. Energy management for households with solar assisted thermal load considering renewable energy and price uncertainty. *IEEE Trans. Smart Grid* **2015**, *6*, 301–314. [CrossRef]
54. Shang, C.; Srinivasan, D.; Reindl, T. An improved particle swarm optimisation algorithm applied to battery sizing for stand-alone hybrid power systems. *Int. J. Electr. Power Energy Syst.* **2016**, *74*, 104–117. [CrossRef]
55. Maleki, A.; Askarzadeh, A. Optimal sizing of a PV/wind/diesel system with battery storage for electrification to an off-grid remote region: A case study of Rafsanjan, Iran. *Sustain. Energy Technol. Assess.* **2014**, *7*, 147–153. [CrossRef]
56. Catalogue of European Urban Wind Turbine Manufacturers. Available online: http://www.urbanwind.net/pdf/CATALOGUE_V2.pdf (accessed on 19 July 2017).
57. Gunes, M.B. Investigation of a Fuel Cell Based Total Energy System for Residential Applications. Master's Thesis, Virginia Polytechnic Institute and State University, Blacksburg, Virginia, 30 April 2001.
58. Maleki, A.; Rosen, M.A. Design of a cost-effective on-grid hybrid wind-hydrogen based CHP system using a modified heuristic approach. *Int. J. Hydrogen Energy* **2017**, *42*, 15973–15989. [CrossRef]
59. El-Sharkh, M.; Rahman, A.; Alam, M. Evolutionary programming-based methodology for economical output power from PEM fuel cell for micro-grid application. *J. Power Sources* **2005**, *139*, 165–169. [CrossRef]
60. Azmy, A.M.; Erlich, I. Online optimal management of PEMFuel cells using neural networks. *IEEE Trans. Power Deliv.* **2005**, *20*, 1051–1058. [CrossRef]
61. El-Sharkh, M.; Tanrioven, M.; Rahman, A.; Alam, M. Impact of hydrogen production on optimal economic operation of a grid-parallel PEM fuel cell power plant. *J. Power Sources* **2006**, *153*, 136–144. [CrossRef]
62. El-Sharkh, M.; Tanrioven, M.; Rahman, A.; Alam, M. Cost related sensitivity analysis for optimal operation of a grid-parallel PEM fuel cell power plant. *J. Power Sources* **2006**, *161*, 1198–1207. [CrossRef]
63. Maleki, A.; Khajeh, M.G.; Rosen, M.A. Two heuristic approaches for the optimization of grid-connected hybrid solar-hydrogen systems to supply residential thermal and electrical loads. *Sustain. Cities Soc.* **2017**. [CrossRef]
64. Erdmann, G. Future economics of the fuel cell housing market. *Int. J. Hydrogen Energy* **2003**, *28*, 685–694. [CrossRef]
65. Barbir, F.; Gomez, T. Efficiency and economics of proton exchange membrane (PEM) fuel cells. *Int. J. Hydrogen Energy* **1997**, *22*, 1027–1037. [CrossRef]

66. Assaf, J.; Shabani, B. Economic analysis and assessment of a standalone solar-hydrogen combined heat and power system integrated with solar-thermal collectors. *Int. J. Hydrogen Energy* **2016**, *41*, 18389–18404. [CrossRef]
67. Assaf, J.; Shabani, B. Transient simulation modelling and energy performance of a standalone solar-hydrogen combined heat and power system integrated with solar-thermal collectors. *Appl. Energy* **2016**, *178*, 66–77. [CrossRef]
68. Poli, R.; Kennedy, J.; Blackwell, T. Particle swarm optimization. *Swarm Intell.* **2007**, *1*, 33–57. [CrossRef]
69. Eberhart, R.C.; Kennedy, J. A new optimizer using particle swarm theory. In Proceedings of the Sixth International Symposium on Micro Machine and Human Science, Nagoya, Japan, 4–6 October 1995; pp. 39–43.
70. Maleki, A.; Hafeznia, H.; Rosen, M.A.; Pourfayaz, F. Optimization of a grid-connected hybrid solar-wind-hydrogen CHP system for residential applications by efficient metaheuristic approaches. *Appl. Therm. Eng.* **2017**, *123*, 1263–1277. [CrossRef]
71. Angeline, P.J. Evolutionary optimization versus particle swarm optimization: Philosophy and performance differences. In Proceedings of the Evolutionary Programming VII, San Diego, CA, USA, 25–27 March 1998; pp. 601–610.
72. Clerc, M.; Kennedy, J. The particle swarm-explosion, stability, and convergence in a multidimensional complex space. *IEEE Trans. Evol. Comput.* **2002**, *6*, 58–73. [CrossRef]
73. Iran Renewable Energy Organization (SUNA). Available online: <http://www.suna.org.ir/fa/home> (accessed on 19 July 2017).



© 2017 by the authors. Licensee MDPI, Basel, Switzerland. This article is an open access article distributed under the terms and conditions of the Creative Commons Attribution (CC BY) license (<http://creativecommons.org/licenses/by/4.0/>).