

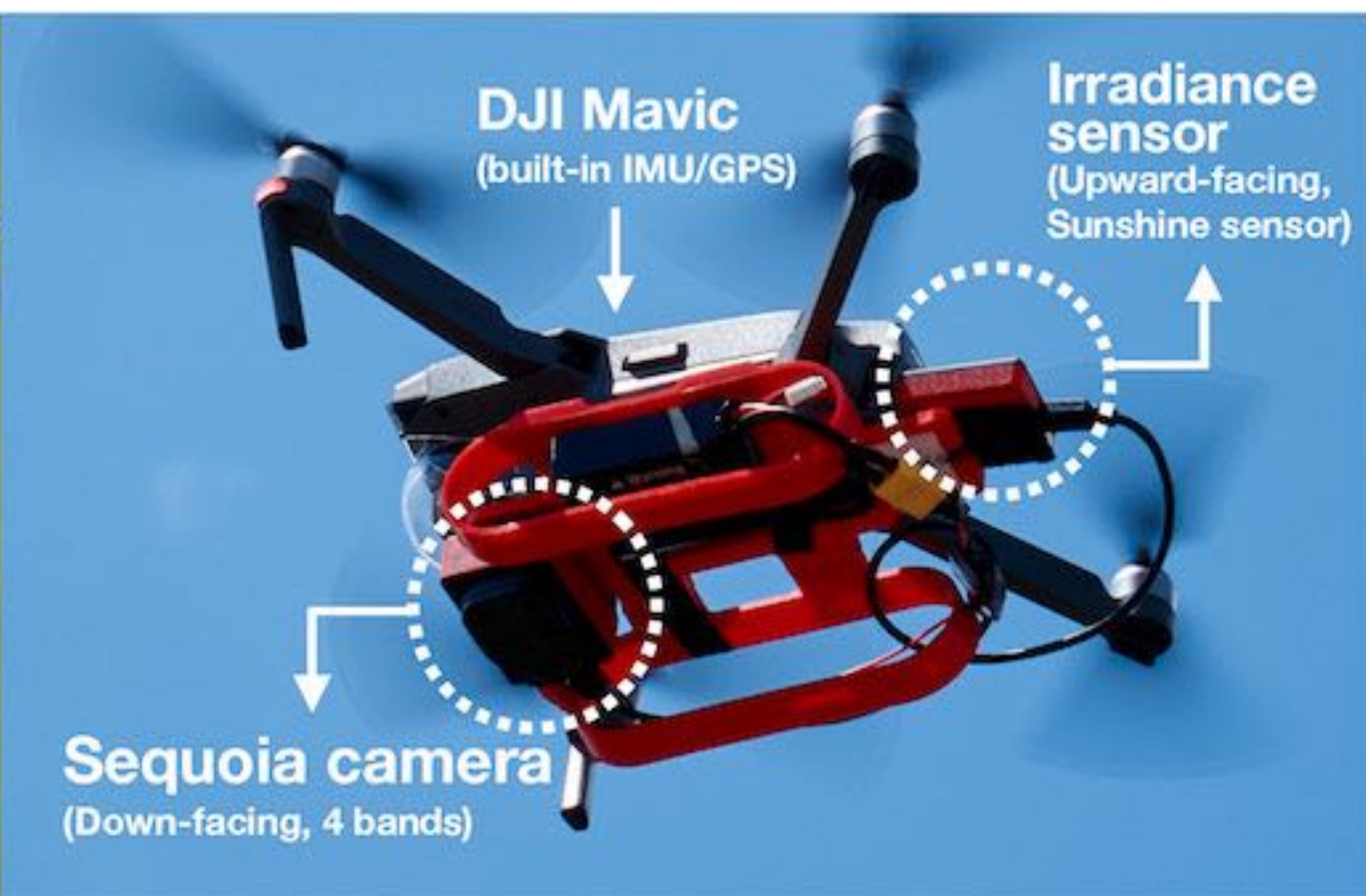
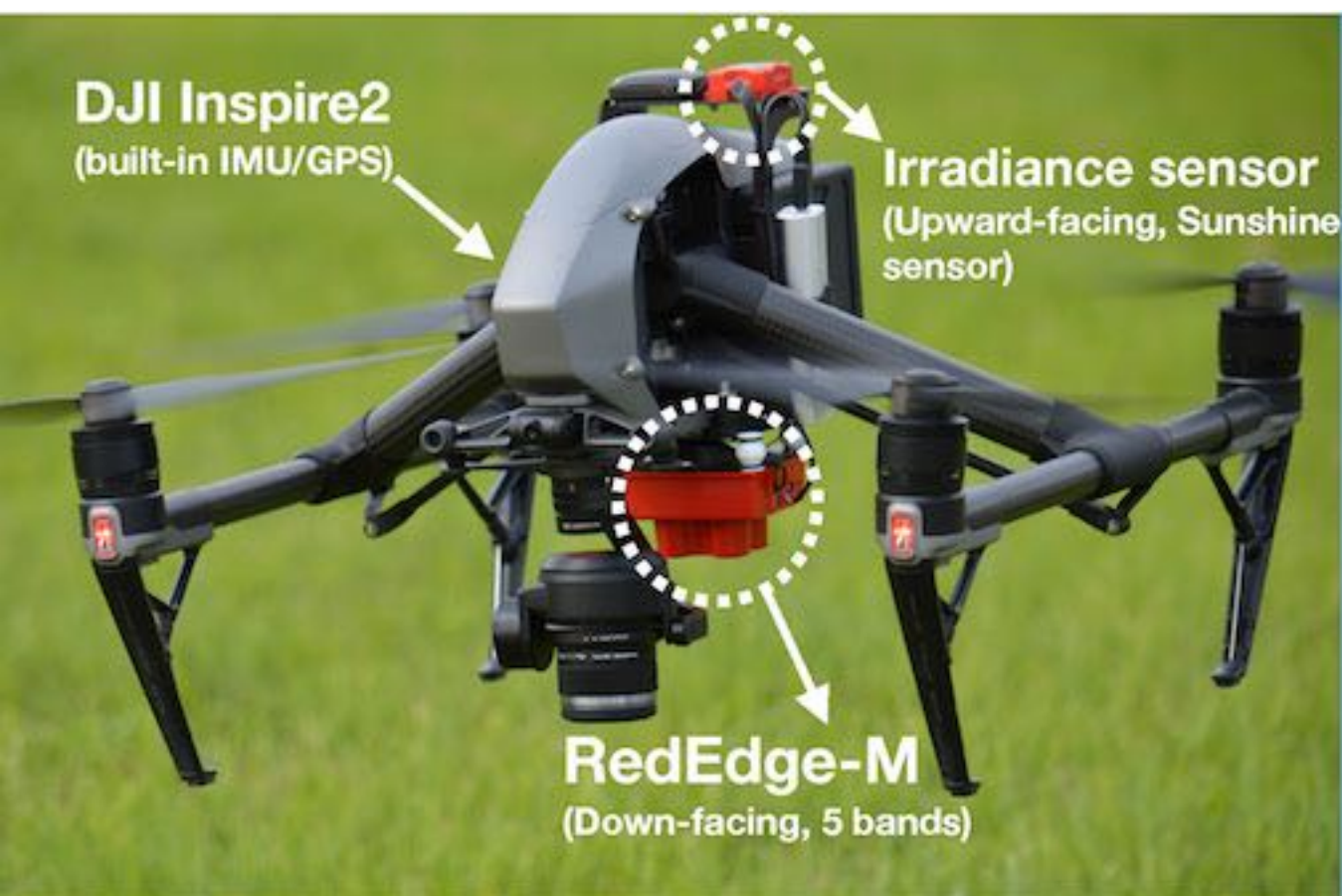
Dataset available from : <https://goo.gl/ZsgeCV>

Overview of training and testing dataset.

Description	RedEdge-M	Sequoia
# Orthomosaic map	5	3
Total surveyed area (ha)	0.8934	0.762
# channel	12 ^a	8 ^b
Input image size (in pixel, tile size)	480 × 360	
# training data	# images= 403 × 12 = 4836 ^c # pixel = 835,660,800	# images = 404 × 8 ^b = 3232 # pixel = 558,489,600
# testing data	94 × 12 = 1128 # pixel = 194,918,400	125 × 8 = 1000 # pixel = 172,800,000
Total data	# image = 10,196, # pixel = 1,761,868,800	
Altitude	10 m	

^a 12 channels of RedEdge-M data consists of R(1), Red edge(1), G(1), B(1), RGB(3), CIR(3), NDVI(1), and NIR(1). The number in parentheses indicate the number of channel; ^b 8 channels Sequoia data consists of R(1), Red edge(1), G(1), CIR(3), NDVI(1), and NIR(1); ^c Each channel is treated as an image.

Aerial platforms used for data collection

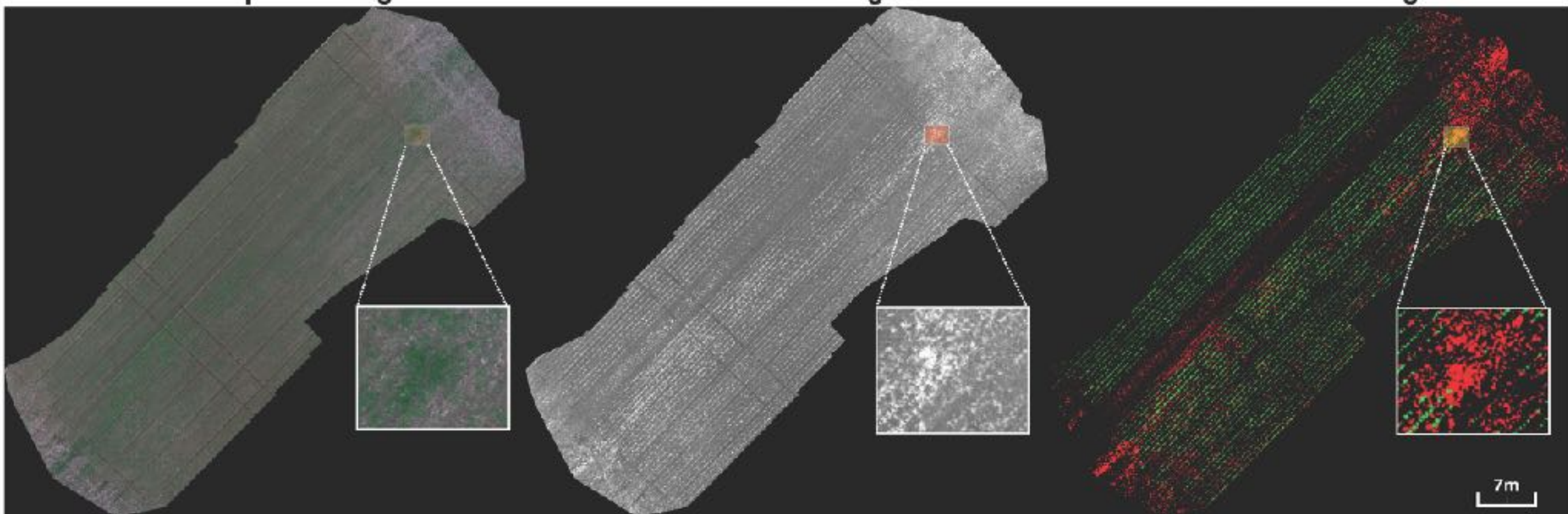


Multispectral orthomosaic images with expert guided label dataset

RGB composite image

840nm NIR image

Ground truth image

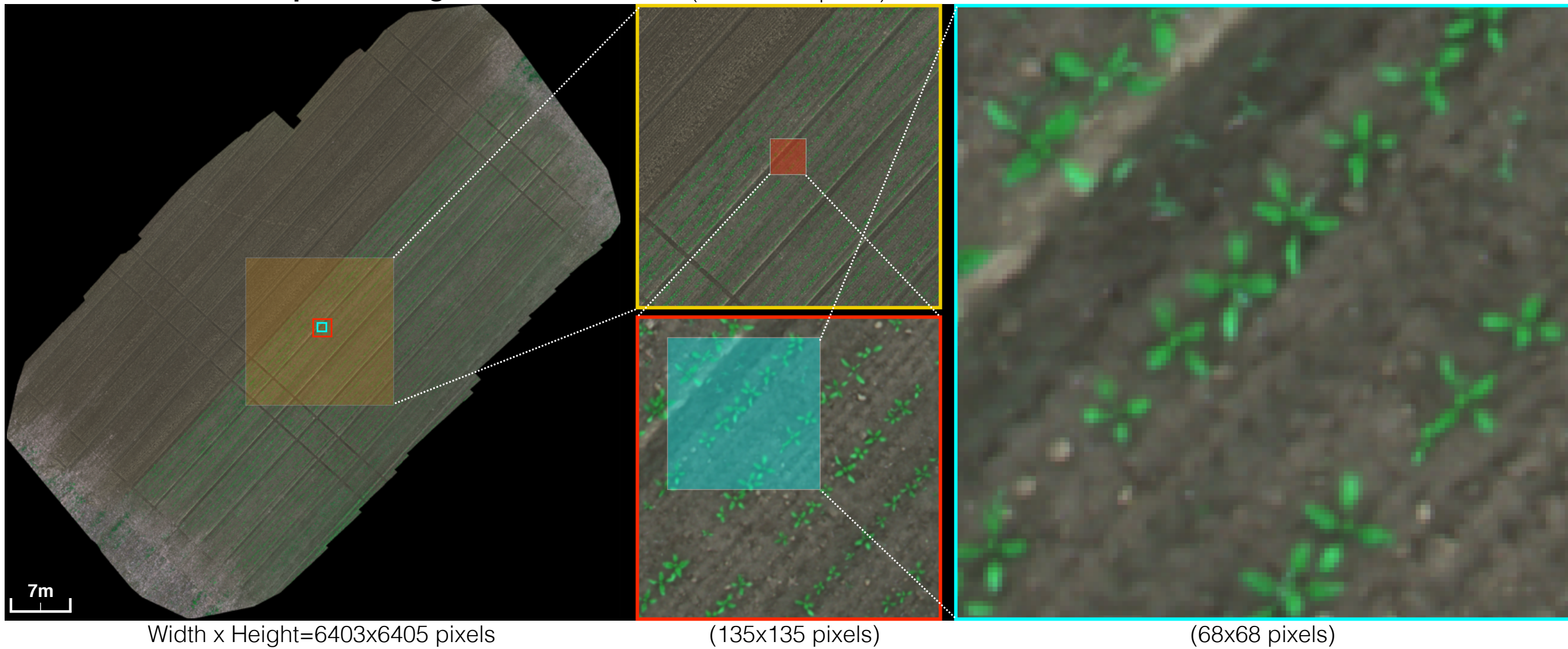


Width x Height=5995x5854 pixel, GSD = 0.94cm/pixel, area=65x35m, 2,275m² (0.22ha)

High-fidelity orthomosaic images

RGB composite image

(1085x1085 pixels)



WeedMap pipeline

