

## Supplementary Materials for

# Using synthetic remote sensing indicators to monitor the land degradation in a salinized area

Tao Yu<sup>1,2</sup>, Guli-Jiapaer<sup>1,3\*</sup>, Anming Bao<sup>1,3</sup>, Guoxiong Zheng<sup>1,2</sup>, Liangliang Jiang<sup>4</sup>, Ye Yuan<sup>1,2,5</sup> and Xiaoran Huang<sup>1,2</sup>

<sup>1</sup> State Key Laboratory of Desert and Oasis Ecology, Xinjiang Institute of Ecology and Geography, Chinese Academy of Sciences, Urumqi 830011, China; [yutao171@mails.ucas.ac.cn](mailto:yutao171@mails.ucas.ac.cn) (T.Y.); [baoam@ms.xjb.ac.cn](mailto:baoam@ms.xjb.ac.cn) (A.B.); [zhengguoxiong17@mails.ucas.edu.cn](mailto:zhengguoxiong17@mails.ucas.edu.cn) (G.Z.); [yeyuan.rs@gmail.com](mailto:yeyuan.rs@gmail.com) (Y.Y.); [huangxiaoran14@mails.ucas.edu.cn](mailto:huangxiaoran14@mails.ucas.edu.cn) (X.H.)

<sup>2</sup> University of Chinese Academy of Sciences, Beijing 100049, China

<sup>3</sup> Research Center for Ecology and Environment of Central Asia, Chinese Academy of Sciences, Urumqi 830011, China

<sup>4</sup> School of Geography and Tourism, Chongqing Normal University, Chongqing 401331, China; [jiang@cqnu.edu.cn](mailto:jiang@cqnu.edu.cn) (L.J.)

<sup>5</sup> Sino-Belgian Joint Laboratory of Geo-information, Ghent 9000, Belgium

\* Correspondence: [glmr@ms.xjb.ac.cn](mailto:glmr@ms.xjb.ac.cn)

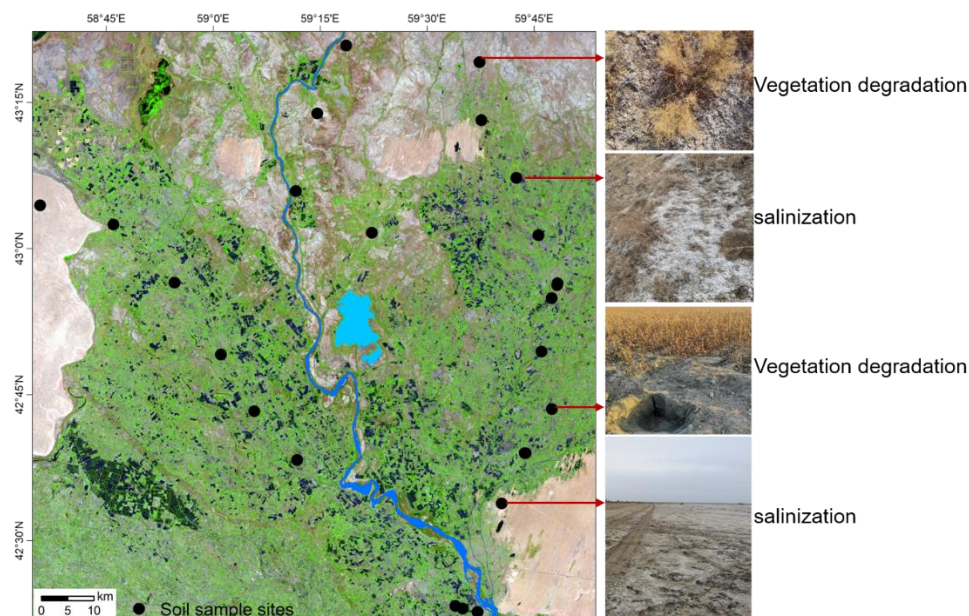
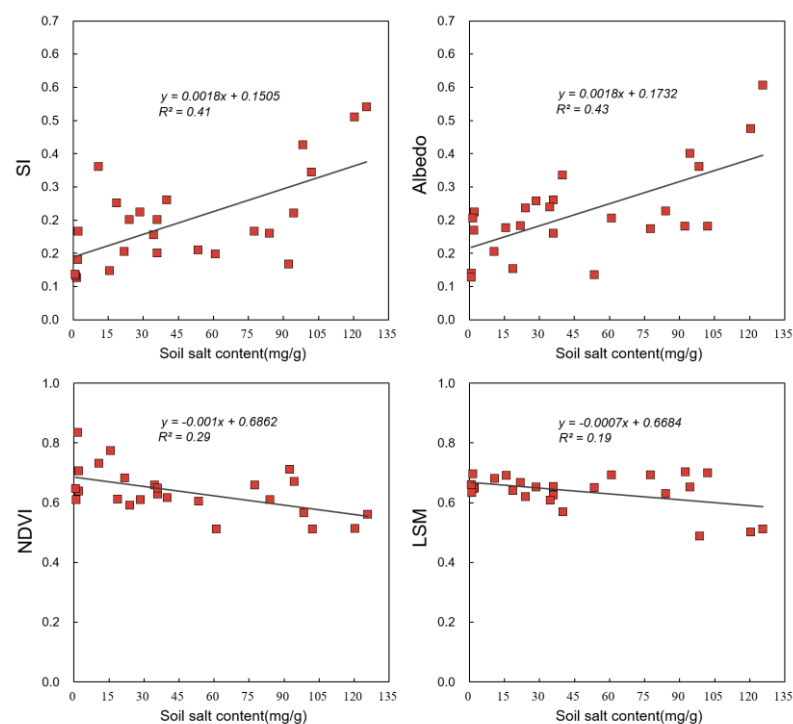


Figure S1. Soil sampling sites of the ADD.

**Table S1.** Field sampling data of soil salt

<b>SDI</b>	<b>Soil salt content (mg/g)</b>	<b>Soil sample sites</b>
0.58	125.65	c1
0.53	120.31	N1
0.33	98.38	N11
0.38	94.35	N12
0.33	84.00	N14
0.51	102.00	N15
0.36	92.31	N16
0.26	77.48	N17
0.26	60.88	N18
0.21	53.45	N2
0.21	39.90	N20
0.18	35.85	N23
0.17	34.45	N24
0.16	28.50	N25
0.15	23.95	N27
0.13	21.83	N29
0.12	10.65	N30
0.22	18.60	N33
0.22	35.89	N34
0.16	15.60	N4
0.11	2.00	N6
0.16	1.90	N8
0.11	1.50	N9
0.11	0.88	N151
0.10	0.75	N158



**Figure S2.** Relationship between the four selected indicators (2019) and field-measured soil salt content (2019). SI: salinization index; NDVI: normalized difference vegetation index; LSM: land surface soil moisture index.