

Frequency domain electromagnetic mapping of an abandoned waste-disposal site: a case in Sardinia (Italy)

Supplementary Material

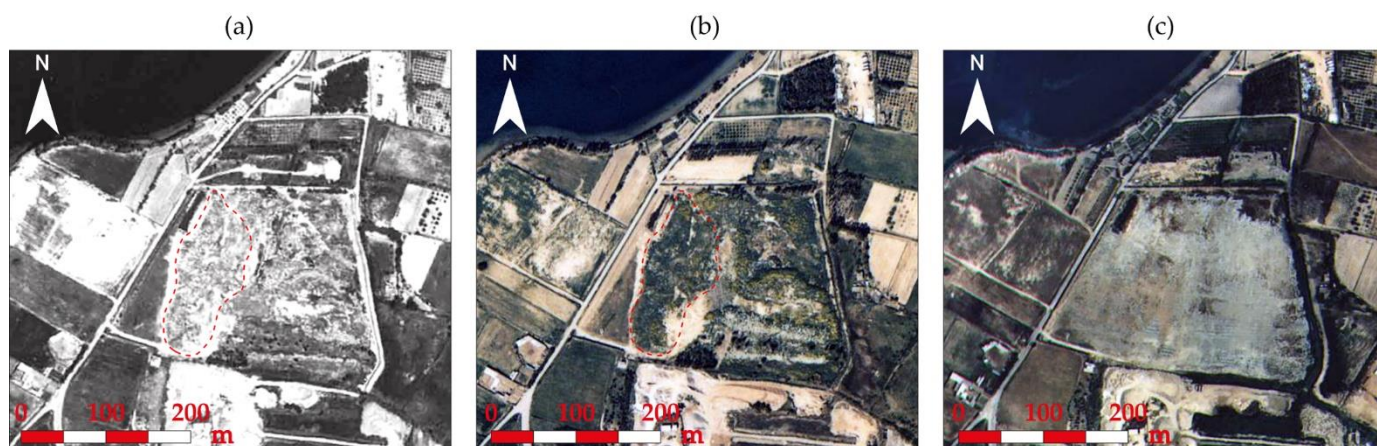


Figure S1. (a) Aerial photographs taken in (a) 1997, (b) 1998, and (c) 1999 (by courtesy of Regione Autonoma della Sardegna). Red curves show the location of a dump material.

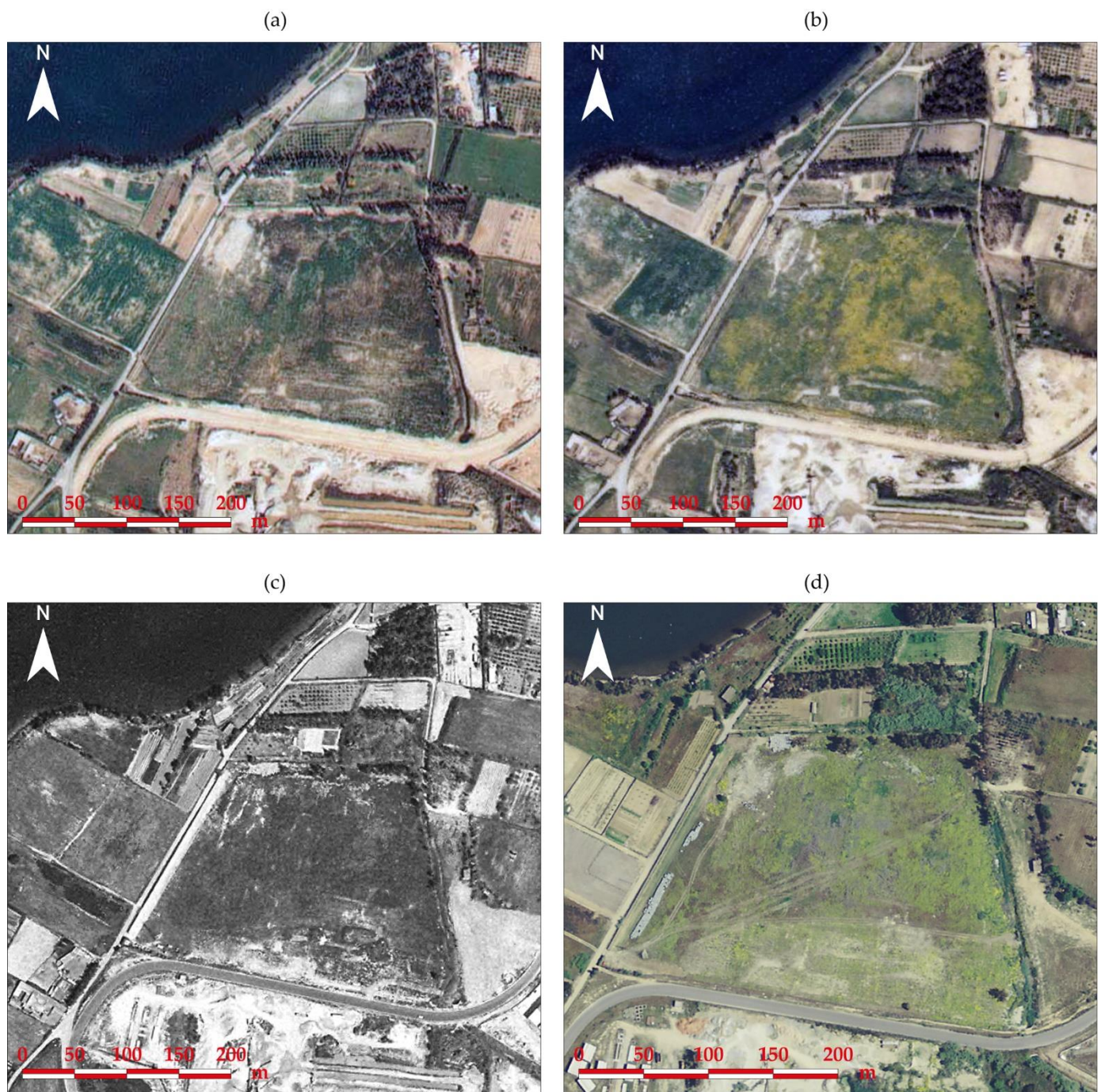


Figure S2. (a) Aerial photographs taken in (a) 2001, (b) 2002, (c) 2003, and (d) 2006 (by courtesy of Regione Autonoma della Sardegna).

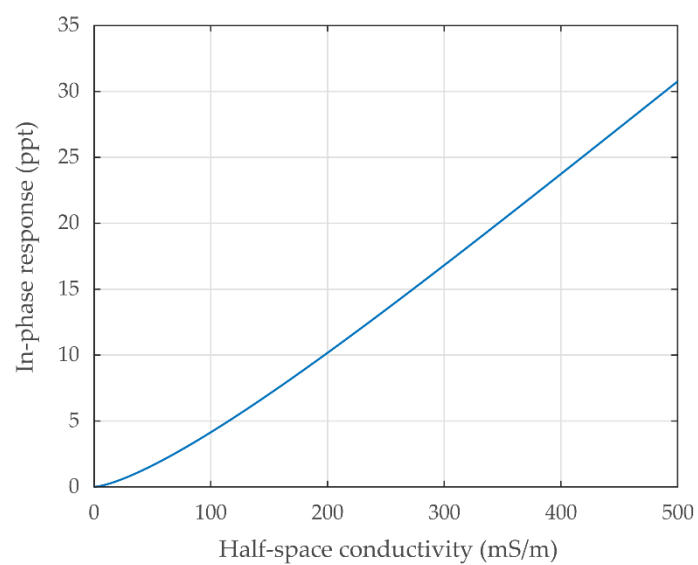


Figure S3. Simulated electromagnetic in-phase response of the EM31 for HCP configuration and with the coil elevation of 0.9 m over a range of half-space conductivities extending to 500 mS/m. Data was simulated considering a nonmagnetic half-space.