

Supplementary material

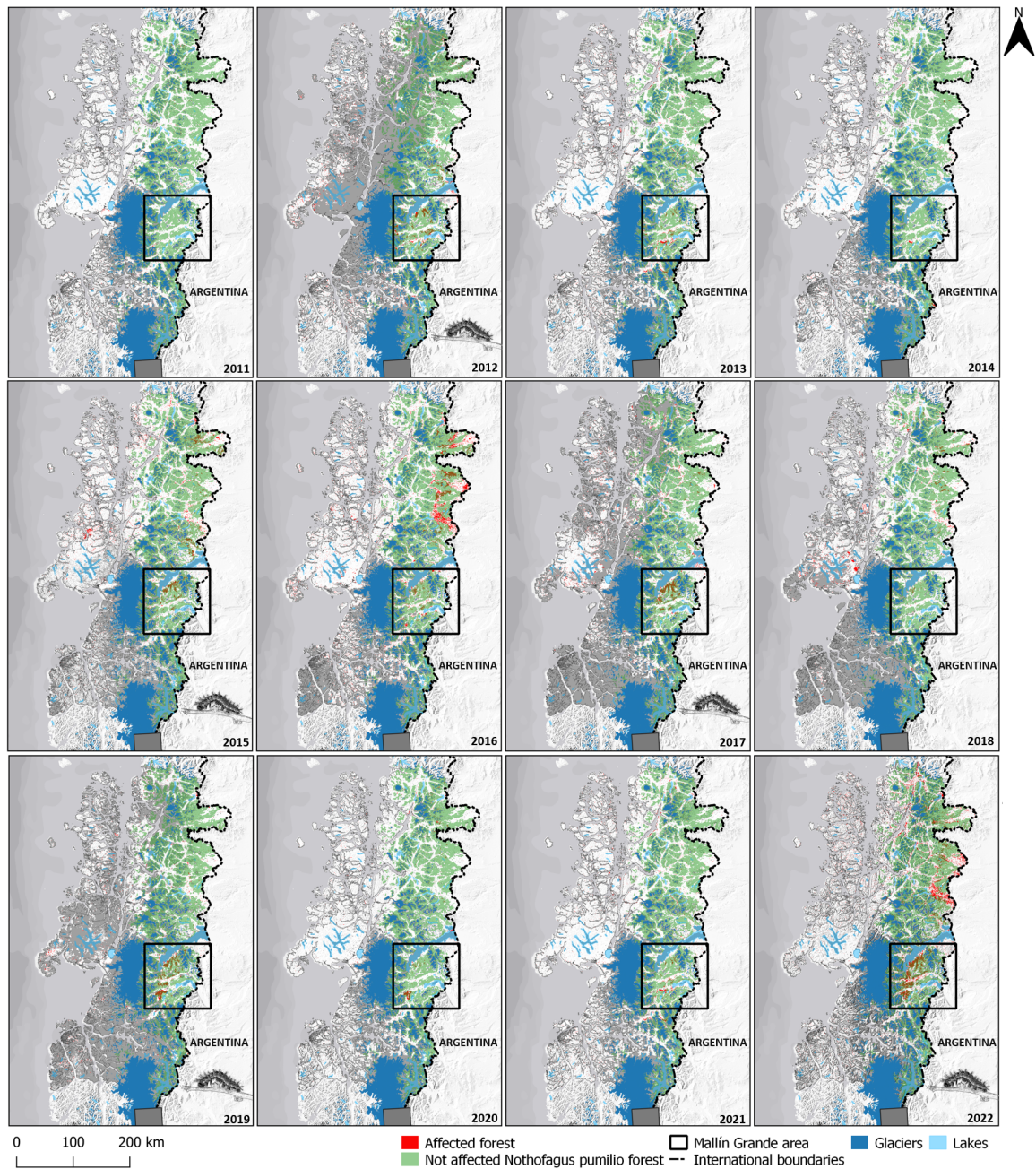


Figure S1. Extreme EVI anomalies (outside the 0.90 reference frequency distribution) in *N. pumilio* forests in the Aysén region, Southern Chile. Black boxes show the location of Mallín Grande where the most extensive *Ormiscodes* outbreaks take place. Maps with a picture of the *Ormiscodes* caterpillar indicate dates with field confirmed outbreaks.