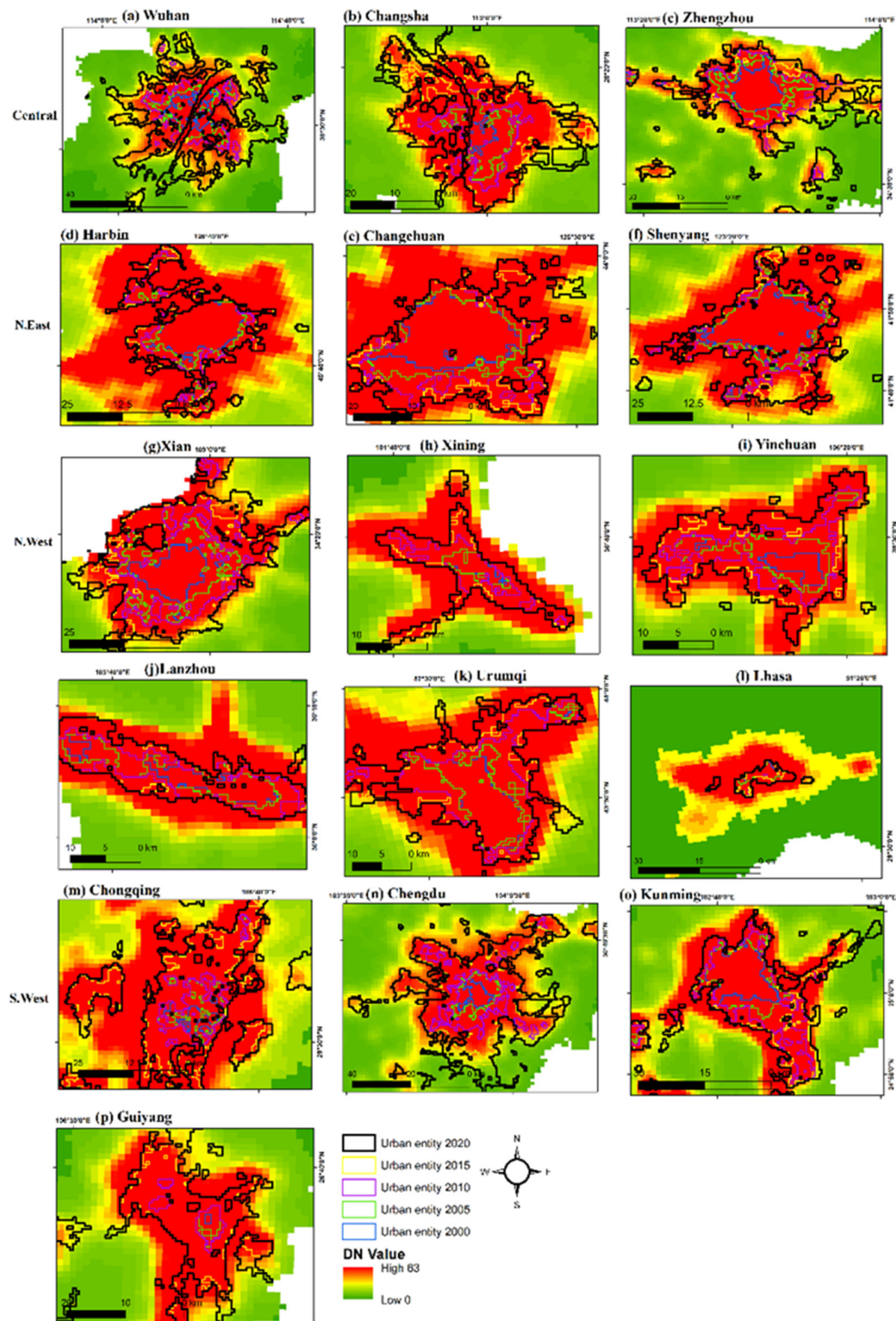


Supplementary Figures



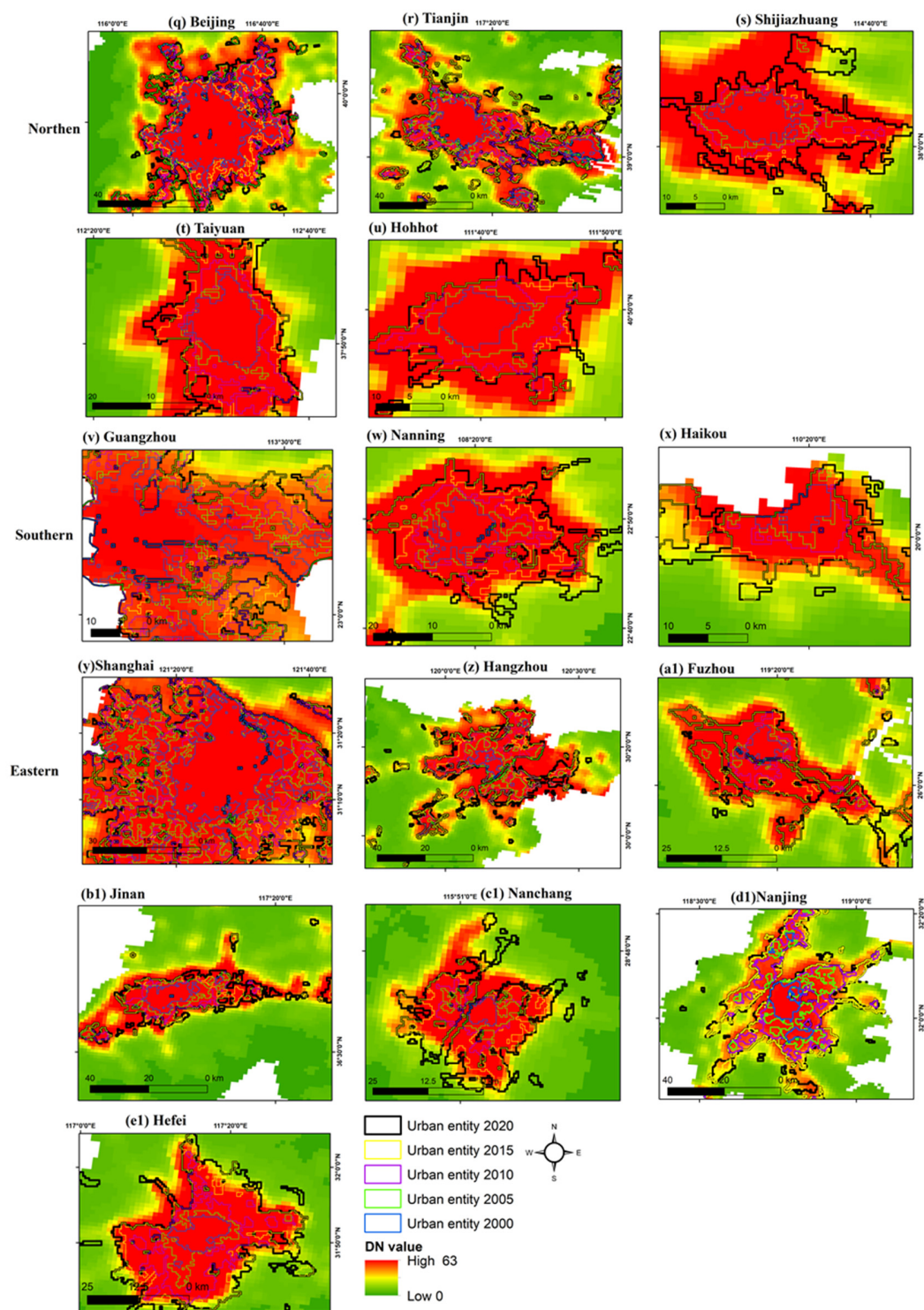


Figure S1. Expansion of urban entities of 31 provincial capitals in China 2000-2020.

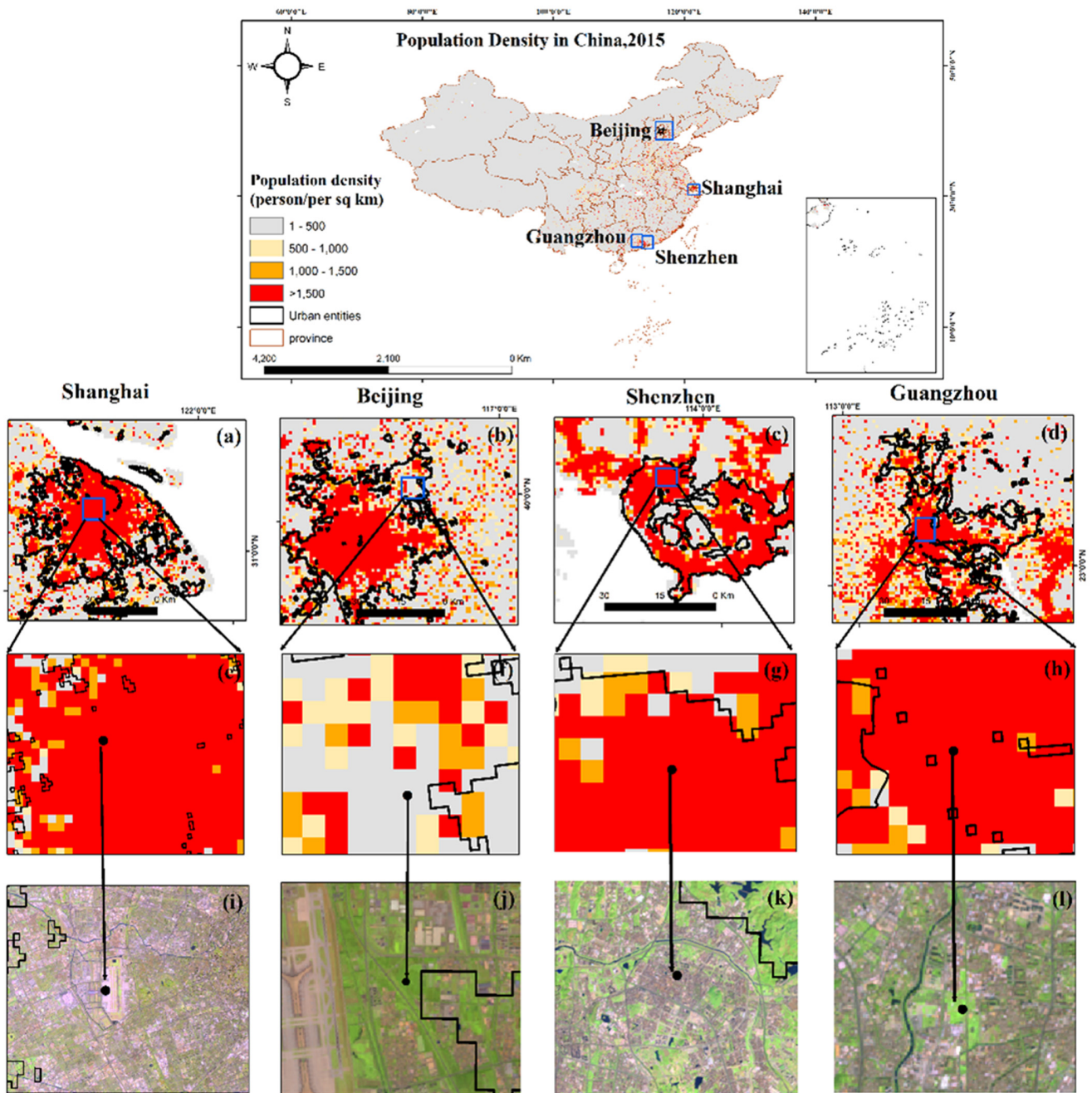


Figure S2. Extracted urban entities (a) Shanghai; (b) Beijing; (c) Shenzhen; (d) Guangzhou with LandScan product and Landsat8 images, 2015.

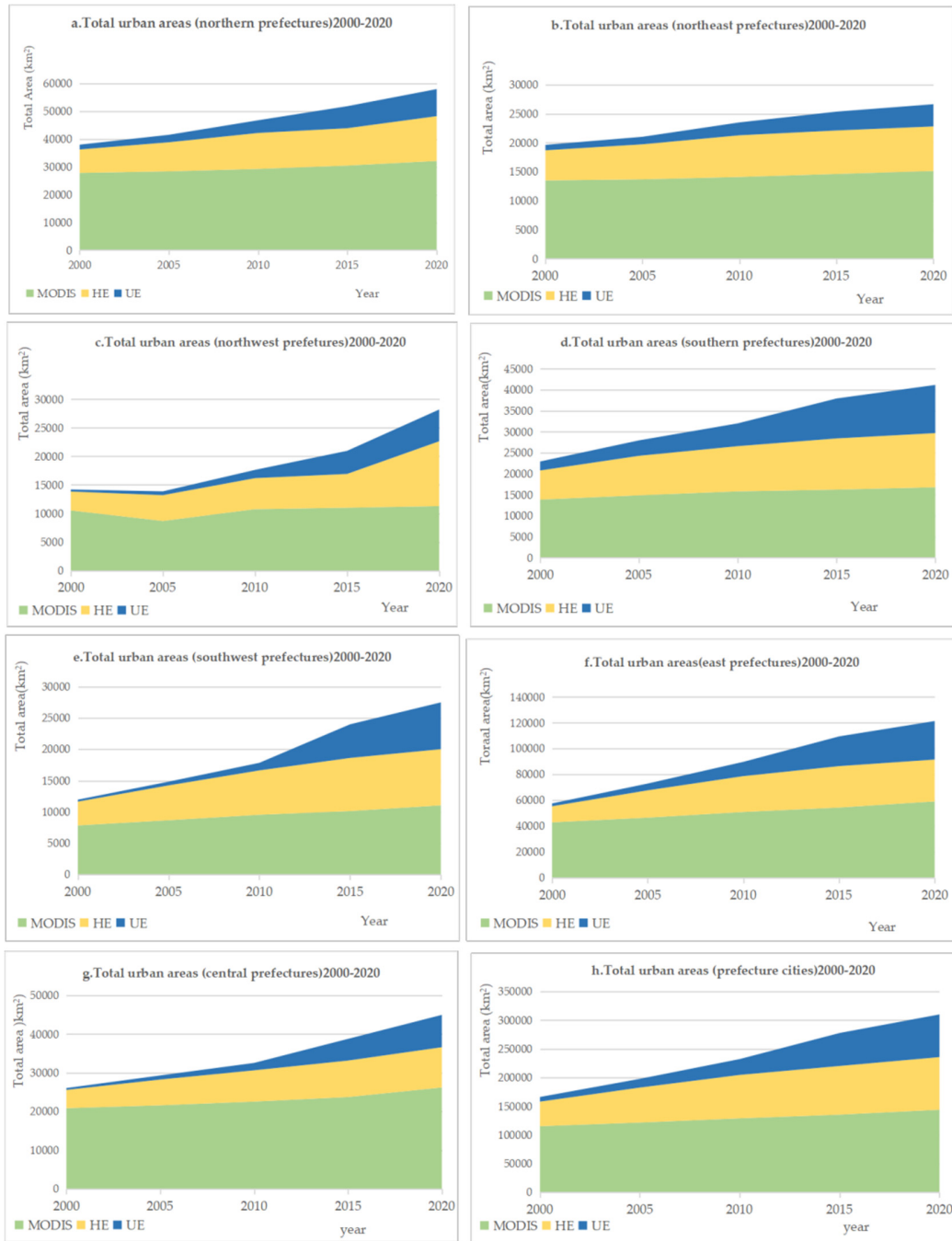


Figure S3. Comparison results of urban areas for UE, HE, MODIS on provincial, and, national levels, 2000-2020.

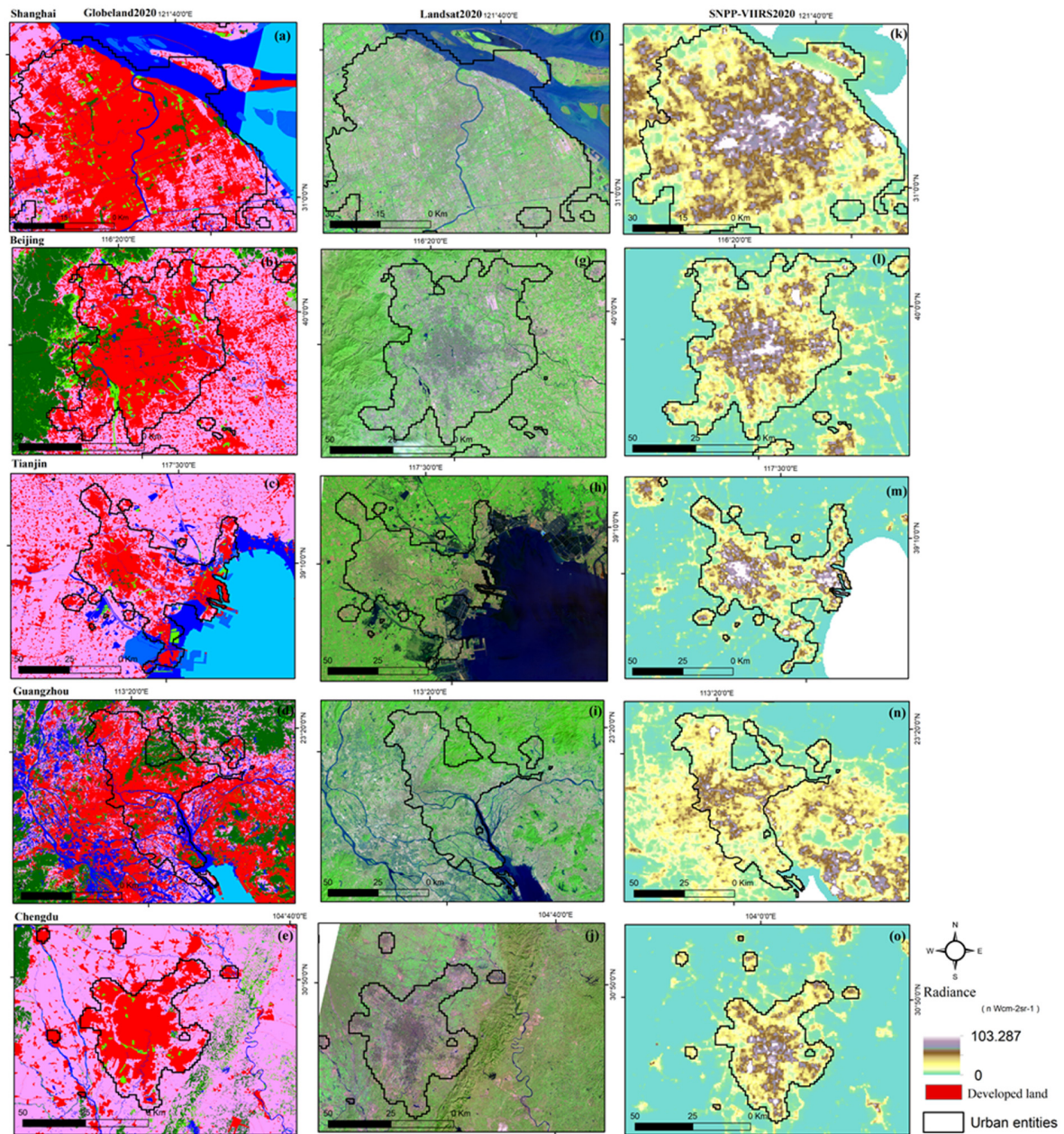


Figure S4. Visual differences of urban entities of five capitals in Globeland, Landsat8, and SNPP-VIIRS-like images in 2020.

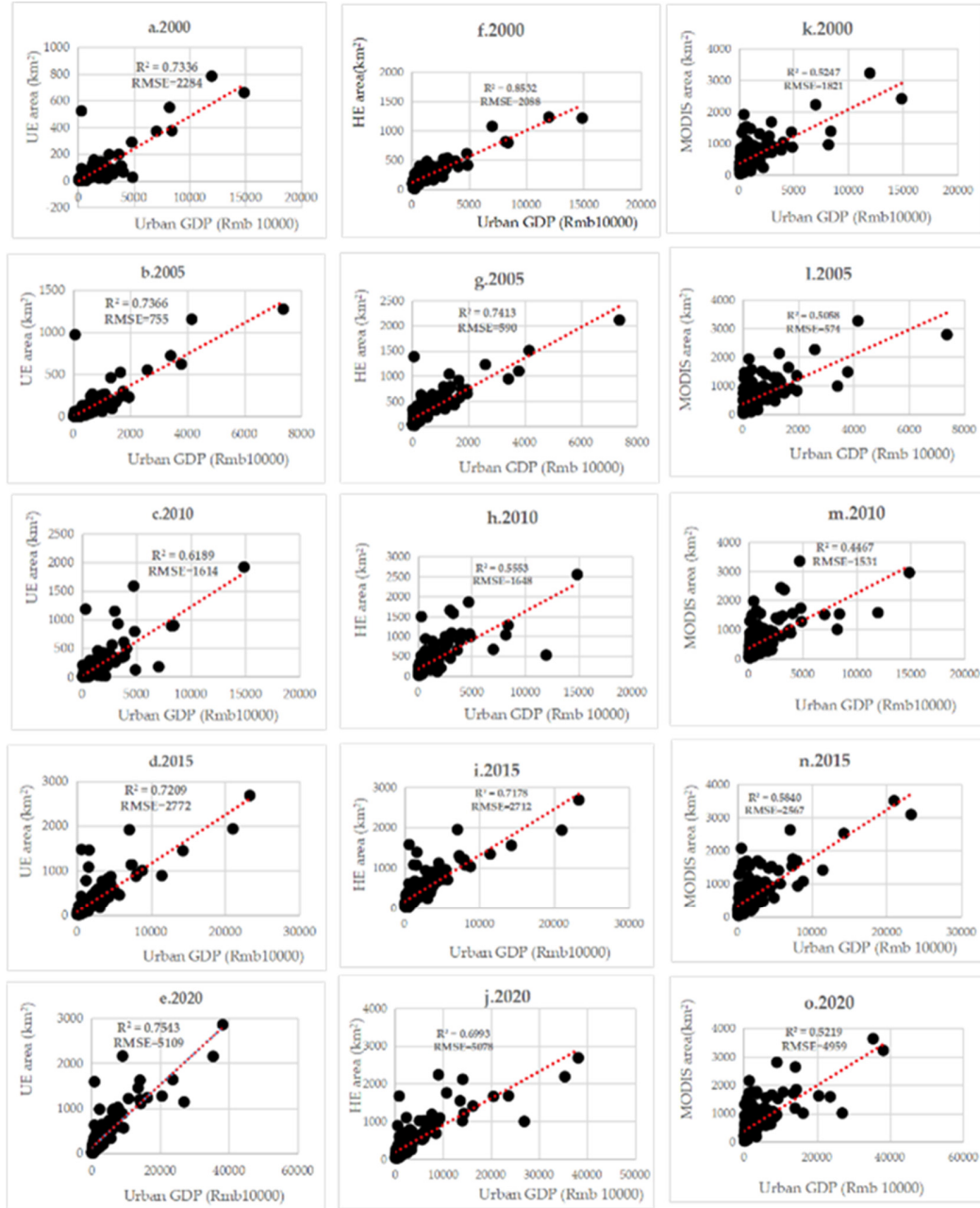


Figure S5. Regression results of total urban areas for UE, HE, MODIS, and urban GDP 2000-2020.