

Supplementary Material

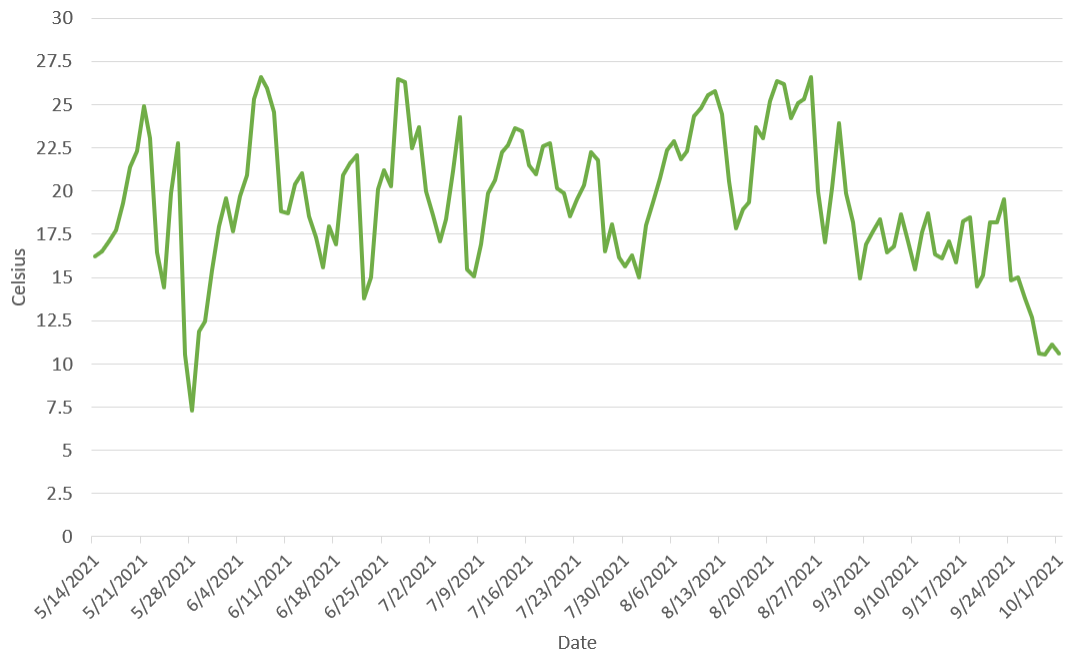


Figure S1: Daily average air temperature for the 2021 growing season.

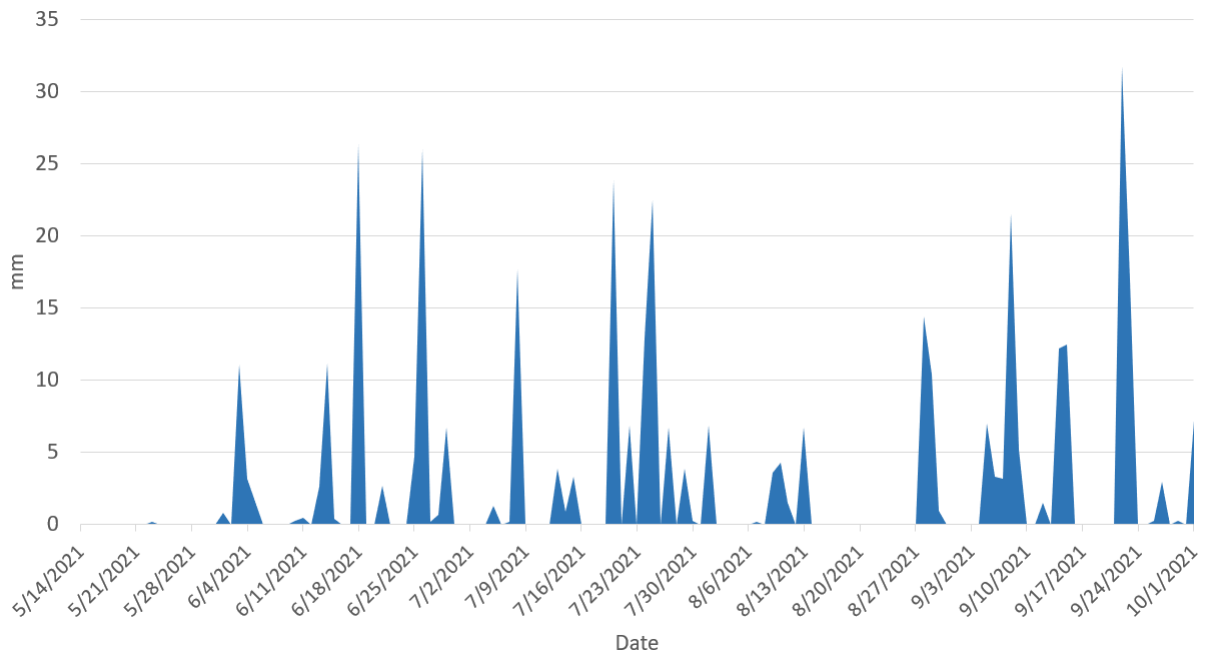


Figure S2: Daily total precipitation for the 2021 growing season.

Table S1: Descriptive statistics for the raw yield (in bu/ac) for each field, where Std. Dev. = standard deviation, Max = maximum, Min = minimum, Q1 = quartile 1, Q3 = quartile 3, IQR = interquartile range, and n = number of samples.

Field	Mean	Median	Std. Dev.	Max	Min	Q1	Q3	IQR	n
1	112.6	106.4	66.5	811.9	4.5	84.3	127.6	43.3	1038
2	146.3	136.5	80.7	836.2	1.2	105.7	173.0	67.3	1577
3	113.2	107.5	62.2	677.1	4.0	72.5	147.0	74.5	840
4	74.5	67.6	52.2	594.8	3.6	46.4	90.6	44.2	873
9	118.9	111.3	69.3	591.7	19.8	87.8	130.2	42.5	514
11	149.3	155.0	51.3	809.4	2.1	127.0	174.4	47.4	13,264

Table S2: Descriptive statistics for the cleaned yield (in bu/ac) for each field, where Std. Dev. = standard deviation, Max = maximum, Min = minimum, Q1 = quartile 1, Q3 = quartile 3, IQR = interquartile range, and n = number of samples.

Field	Mean	Median	Std. Dev.	Max	Min	Q1	Q3	IQR	n
1	110.8	111.3	25.4	178.6	32.0	96.1	129.1	33.1	628
2	144.9	141.4	37.2	251.5	55.6	116.5	172.5	56.1	1175
3	117.3	112.4	41.7	219.2	21.0	83.0	149.1	66.0	617
4	76.6	73.9	25.4	148.2	26.0	58.0	93.7	35.7	584
9	116.0	115.8	19.7	177.8	65.1	102.8	128.6	25.8	301
11	153.3	159.2	34.6	274.2	16.8	137.9	176.8	38.9	9194

Table S3: Descriptive statistics for the interpolated yield (in bu/ac) for each field, where Std. Dev. = standard deviation, Max = maximum, Min = minimum, Q1 = quartile 1, Q3 = quartile 3, IQR = interquartile range, and n = number of samples.

Field	Mean	Median	Std. Dev.	Max	Min	Q1	Q3	IQR	n
1	107.8	108.0	17.1	150.0	62.5	96.7	119.7	23.1	2016
2	147.3	142.8	31.5	217.2	92.2	122.8	167.9	45.1	1589
3	121.6	119.0	40.4	200.1	24.4	88.4	156.5	68.1	1086
4	74.9	70.4	21.2	120.3	34.9	57.7	92.9	35.3	675
9	117.3	115.8	15.0	172.0	87.2	106.8	124.7	17.9	610
11	159.9	162.0	21.8	217.4	50.4	149.1	174.3	25.2	24,662

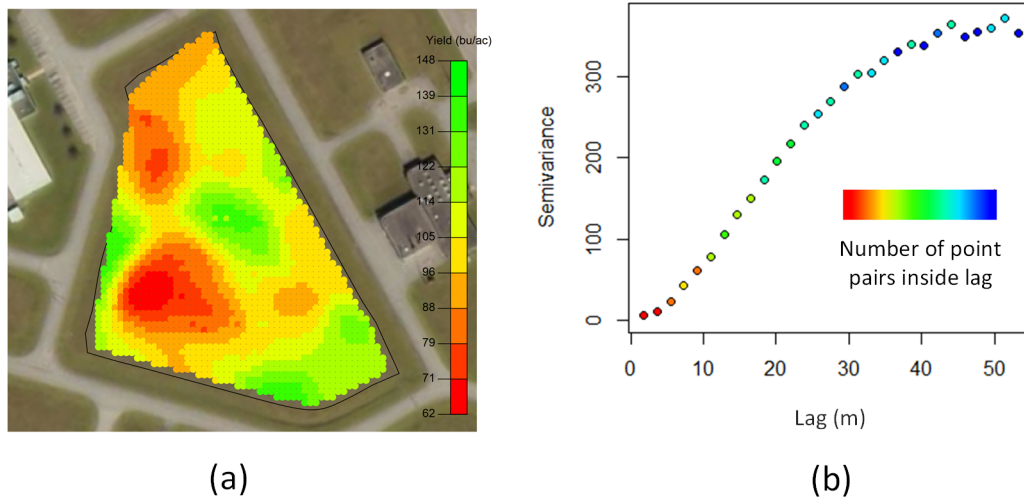


Figure S3: SA illustrative example, where chart a) is a precision map of the interpolated yield for Field 1, and chart b) is the corresponding variogram using a maximum distance of 55 m and lag tolerance of 50%.