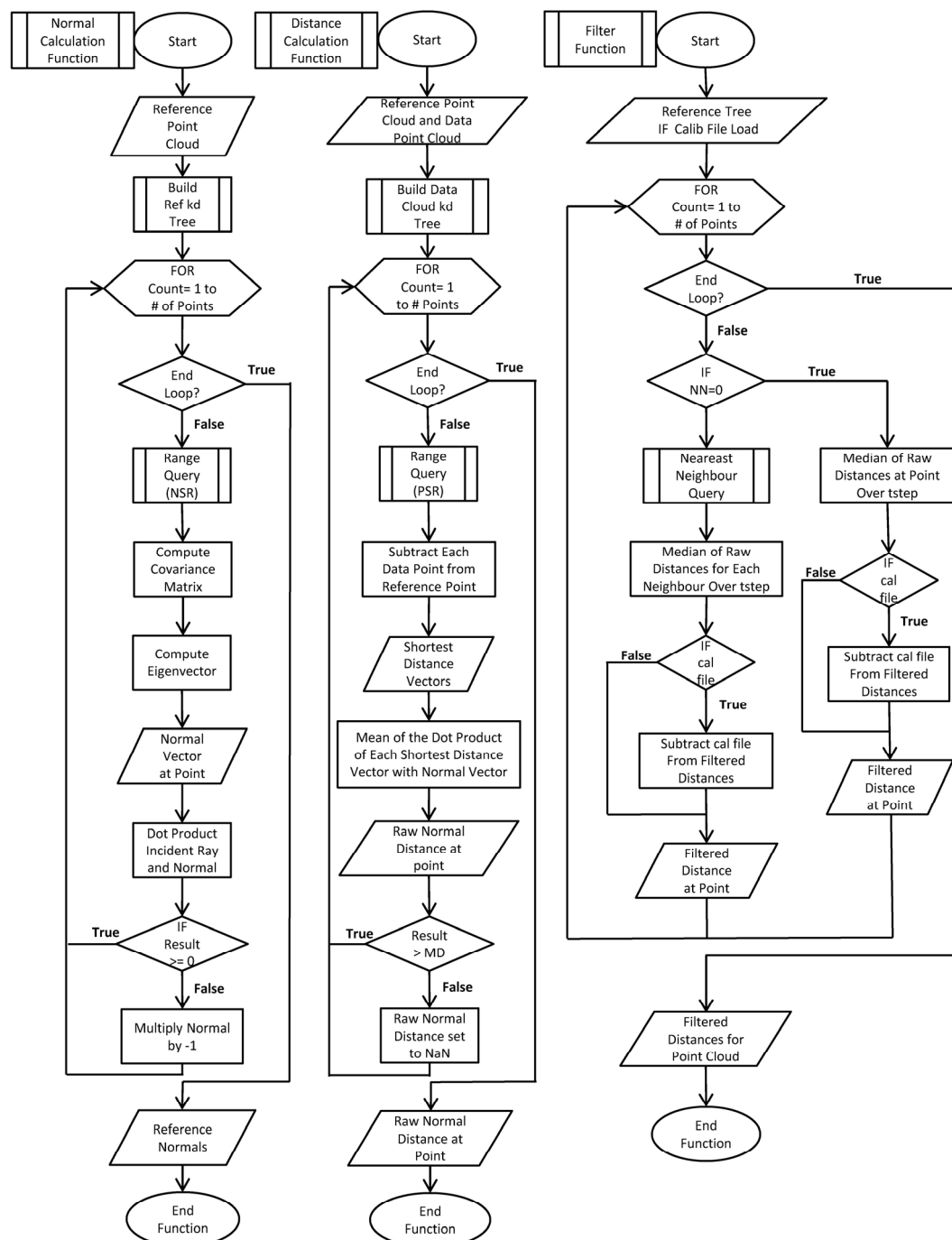


Supplementary Information for  
**A 4D Filtering and Calibration Technique for Small-Scale Point  
 Cloud Change Detection with a Terrestrial Laser Scanner.**  
*Remote Sensing* 2015, 7, 13029-13052



**Figure 1.** Structured flow chart describing the subroutines used in the 4D filtering and calibration algorithm. Subroutines consist of a normal calculation function, a distance calculation function and a filtering function.