

Erratum

Erratum: Kromer, R.A.; *et al.* A 4D Filtering and Calibration Technique for Small-Scale Point Cloud Change Detection with a Terrestrial Laser Scanner. *Remote Sensing* 2015, 7, 13029–13052

Remote Sensing Editorial Office

Received: 23 November 2015; Accepted: 11 December 2015; Published: 15 December 2015

Academic Editor: Prasad S. Thenkabail

MDPI AG, Klybeckstrasse 64, CH-4057 Basel, Switzerland; remotesensing@mdpi.com; Tel.: +41-61-683-77-35

The *Remote Sensing* Editorial Office wishes to make the following erratum to this paper [1]. There is a layout mistake in Figure 2 in the original published version. The correct Figure 2 is shown below:

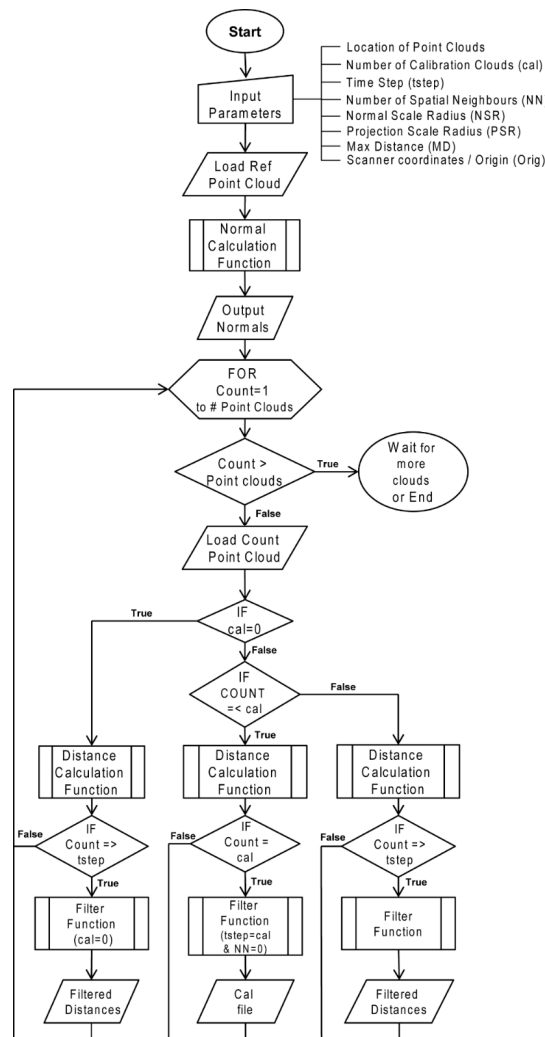


Figure 2. Structured flow chart of the 4D filtering and calibration algorithm. Subroutines, the normal calculation function, the distance calculation function and filter function are presented as supplementary material.

We apologize for any inconvenience caused to the readers by this mistake.

Reference

1. Kromer, R.A.; Abellán, A.; Hutchinson, D.J.; Lato, M.; Edwards, T.; Jaboyedoff, M. A 4D filtering and calibration technique for small-scale point cloud change detection with a Terrestrial Laser Scanner. *Remote Sens.* **2015**, *7*, 13029–13052. [[CrossRef](#)]



© 2015 by the author; licensee MDPI, Basel, Switzerland. This article is an open access article distributed under the terms and conditions of the Creative Commons by Attribution (CC-BY) license (<http://creativecommons.org/licenses/by/4.0/>).