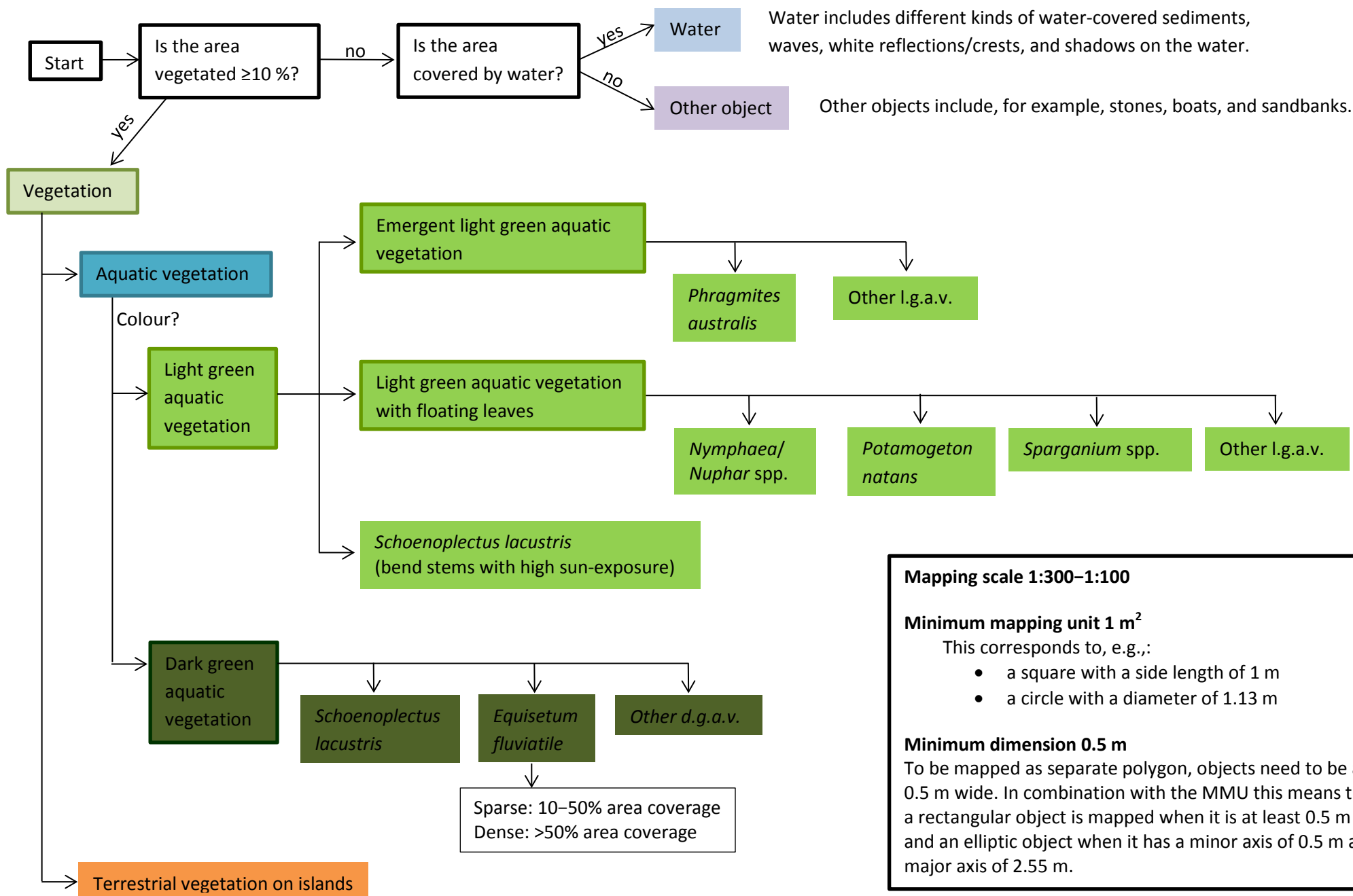


Classification scheme for Ostträsket

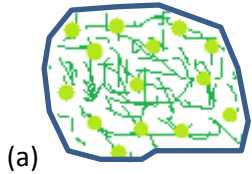


Mixed classes

Areas with more than one taxon are labelled with the name of the dominant taxon. If other taxa cover $\geq 25\%$ of the vegetated area they are added to the class name in decreasing order of dominance, e.g.:

- *Schoenoplectus lacustris* & *Nymphaea/Nuphar* spp.
- *Phragmites australis* & *Equisetum fluviatile* & *Schoenoplectus lacustris*

If the non-dominant taxon forms clusters which are larger than the MMU each cluster has to form an extra polygon (see examples (a) and (b)).



Examples scale 1:200

Water



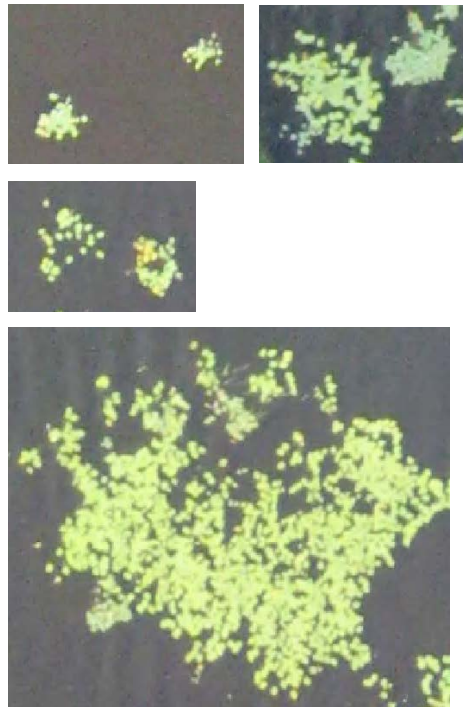
Other objects



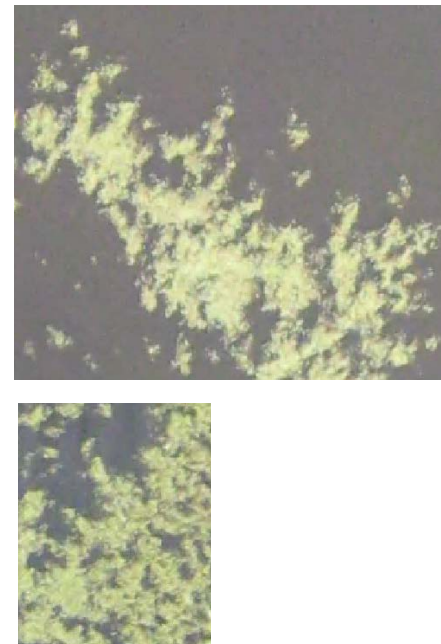
Terrestrial vegetation on islands



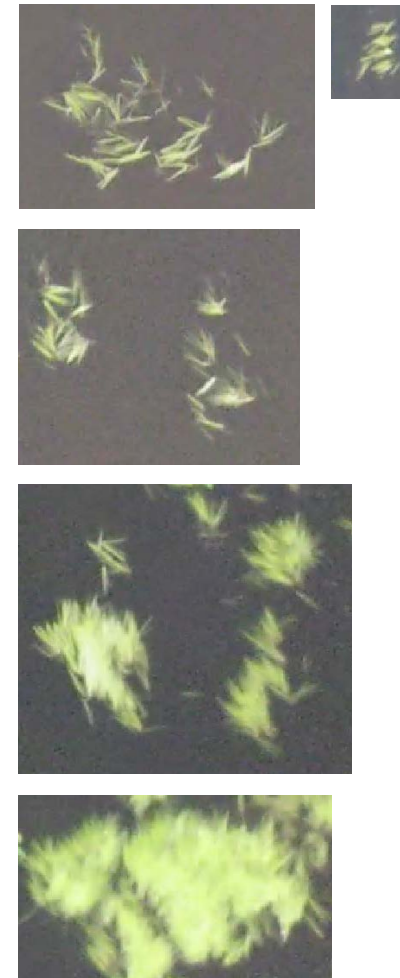
Nymphaea/Nuphar spp.



Potamogeton natans



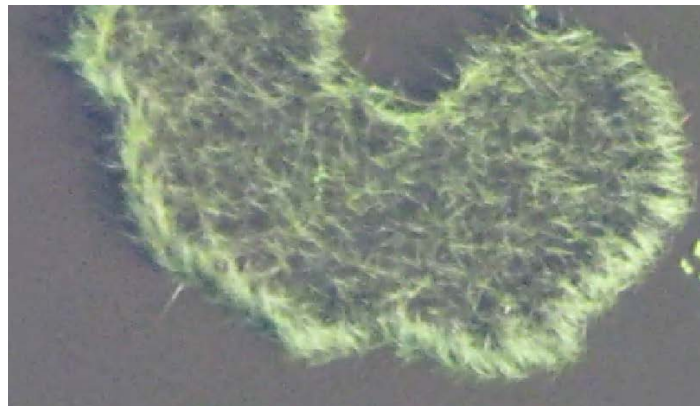
Sparganium spp.
floating form



Phragmites australis



Schoenoplectus lacustris



Equisetum fluviatile

sparse-dense



dense, close to the shore

