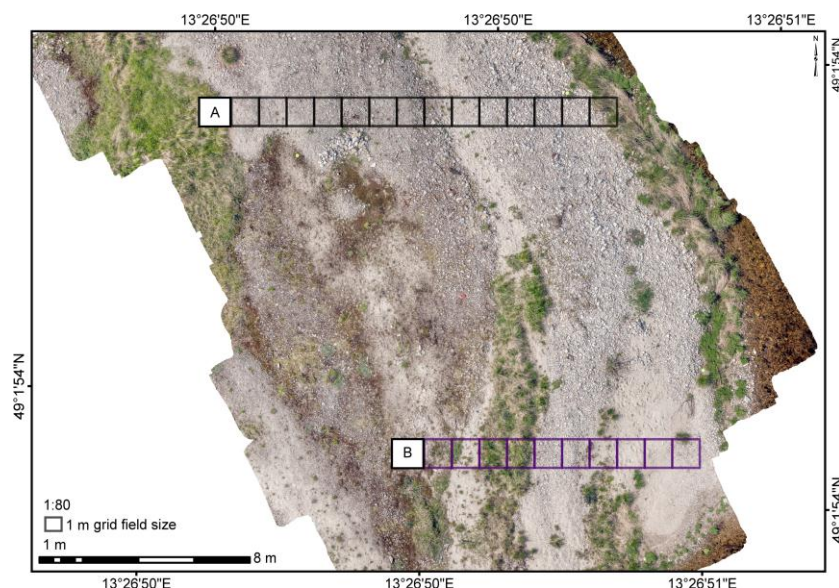
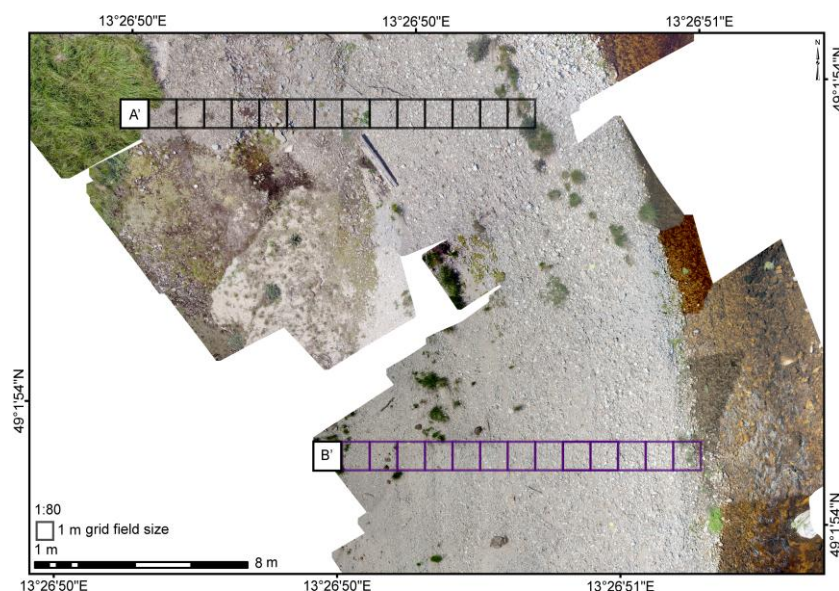


# Supplementary Materials: UAV-based optical granulometry as tool for detecting changes in structure of flood depositions. *Remote Sensing* 2016, 8, Article No.

Jakub Langhammer, Theodora Lendzioch, Jakub Miřijovský, Filip Hartvich



**Figure S1.** Zoomed transect A (upper part) and B (lower part) across the point bar of Javoří brook (May 2014). From the point bar (left) to the river margin (right), alluvial deposits become progressively fresher, resulting from erosional activity.



**Figure S2.** Zoomed transect A' (upper part) and B' (lower part) across the point bar of Javoří brook (June 2016). After the flooding in December 2015 and April 2016, the zone of fresh alluvial deposits apparently extended over the point bar.



© 2016 by the authors; licensee MDPI, Basel, Switzerland. This article is an open access article distributed under the terms and conditions of the Creative Commons by Attribution (CC-BY) license (<http://creativecommons.org/licenses/by/4.0/>).