

Supplementary Materials

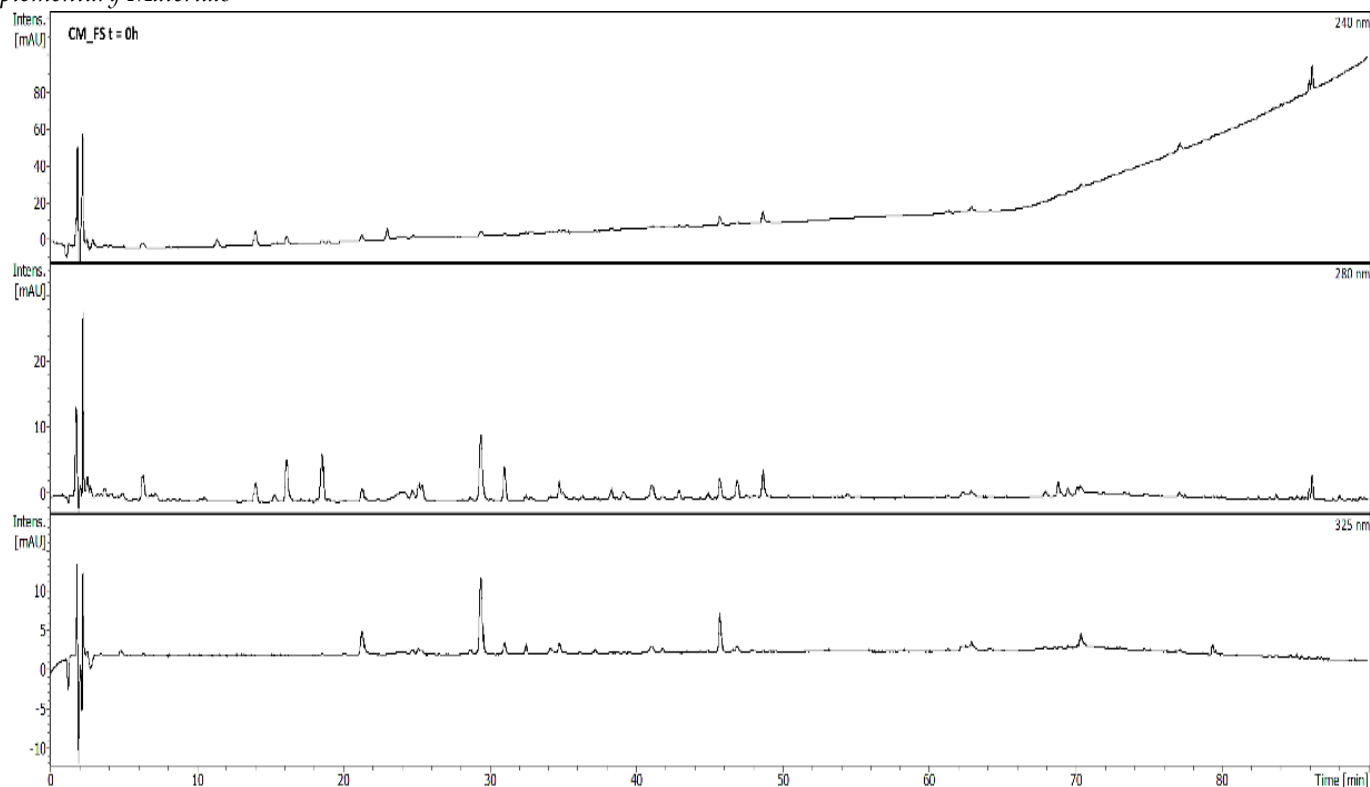


Figure S1. HPLC chromatograms of ethanolic-aqueous extract from fruits of *C. mas* treated with FS in $t = 0$ h registered at 240, 280, and 325 nm.

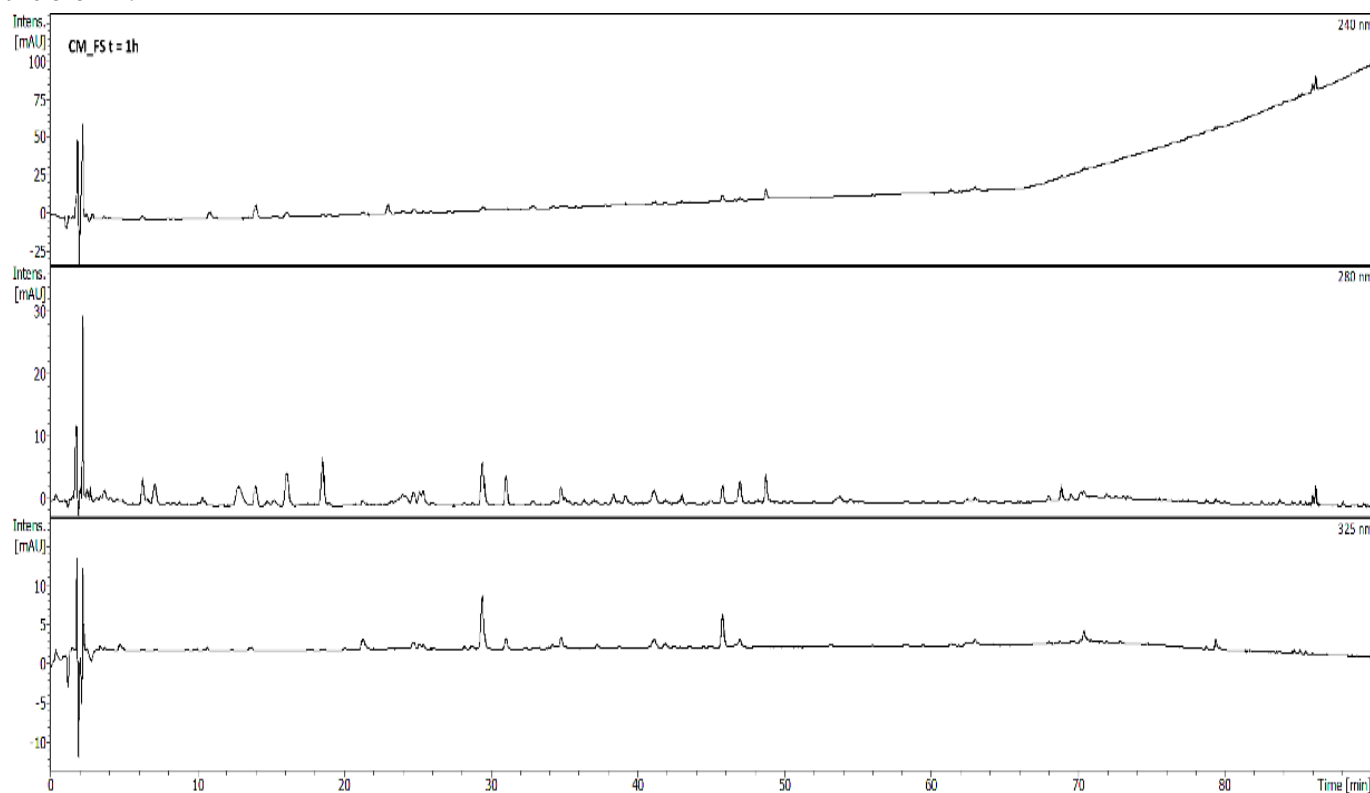


Figure S2. HPLC chromatograms of ethanolic-aqueous extract from fruits of *C. mas* treated with FS in $t = 1$ h registered at 240, 280, and 325 nm.

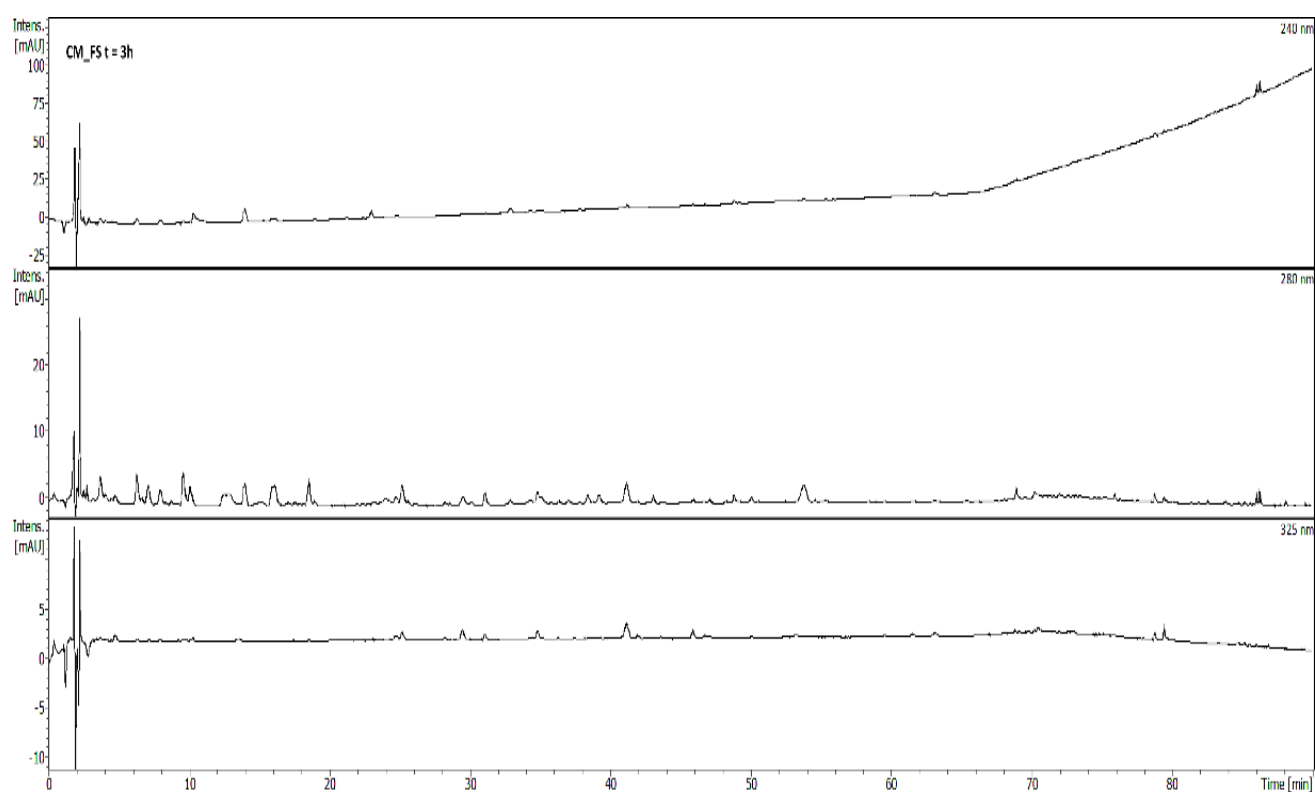


Figure S3. HPLC chromatograms of ethanolic-aqueous extract from fruits of *C. mas* treated with FS in $t = 3$ h registered at 240, 280, and 325 nm.

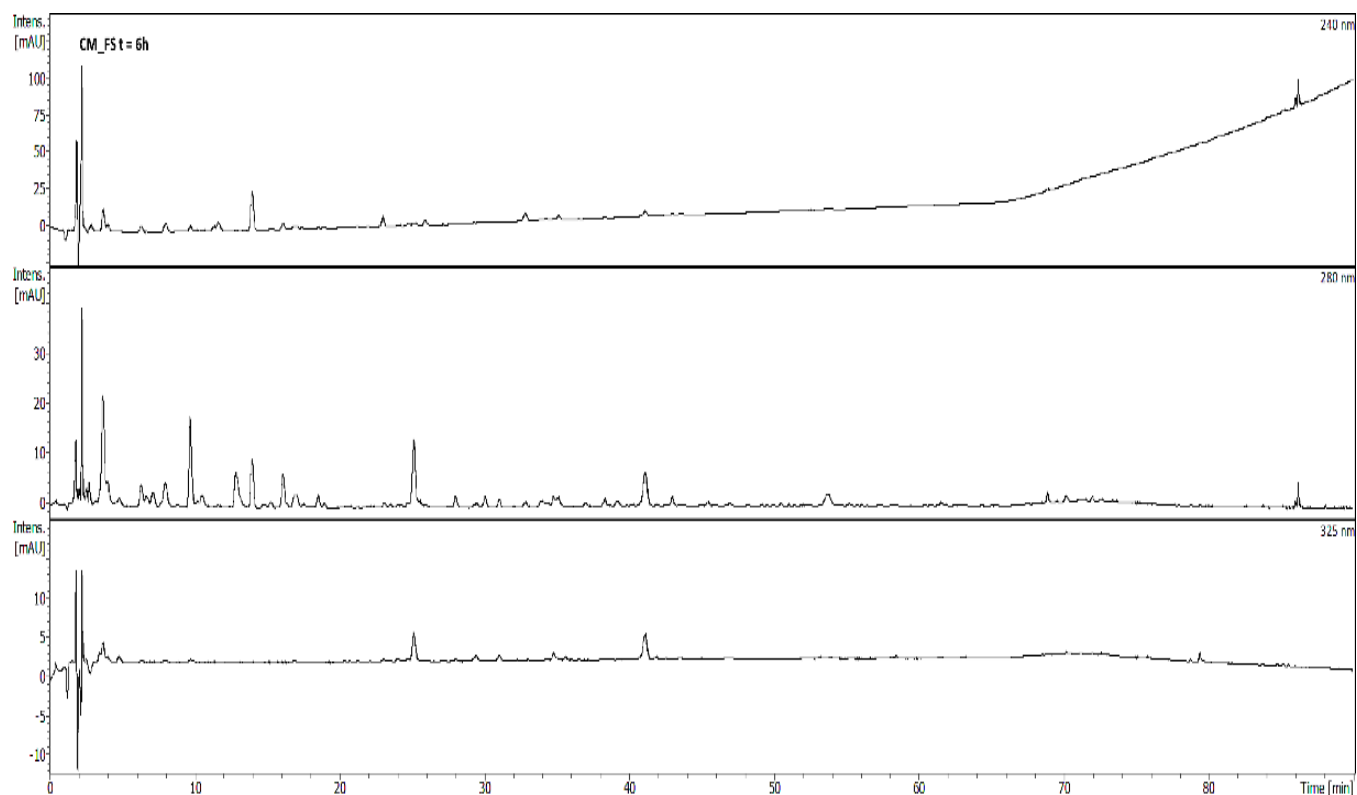


Figure S4. HPLC chromatograms of ethanolic-aqueous extract from fruits of *C. mas* treated with FS in $t = 6$ h registered at 240, 280, and 325 nm.

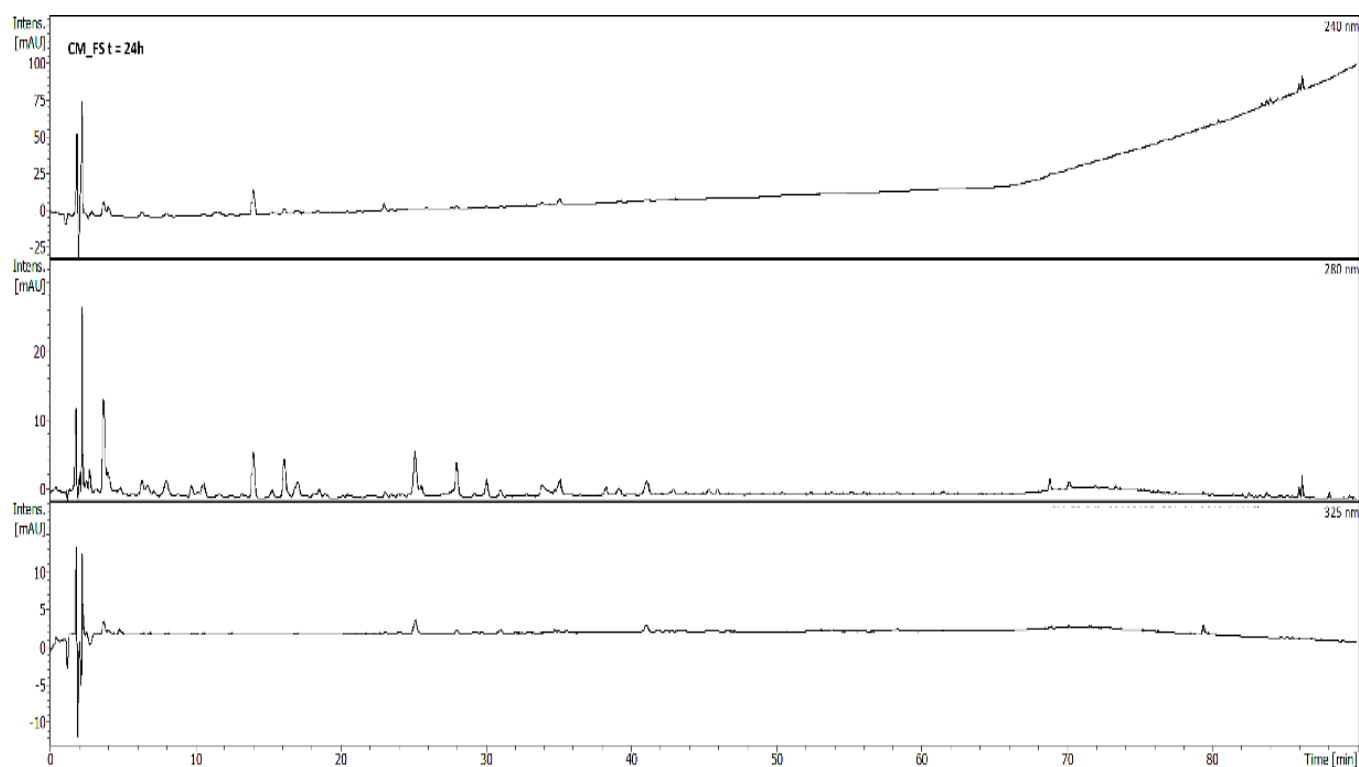


Figure S5. HPLC chromatograms of ethanolic-aqueous extract from fruits of *C. mas* treated with FS in $t = 24$ h registered at 240, 280, and 325 nm.