

### Supplementary Information

**Figure S1.** Average annual percentage change (AAPC) of the (A) years of life lost (YLL) and (B) years lived with disability (YLD) rate for protein–energy malnutrition from 1990 to 2019. AAPC was obtained representing the average percent increase or decrease in PEM rates per year over each specified period of time to summarize and compare these trends over the entire time period.

**Figure S2.** The global disease burden of protein–energy malnutrition for both genders in 204 countries and territories. (A) The age-standardized death rate (ASDR) of protein–energy malnutrition in 2019. (B) The estimated annual percentage change (EAPC) in ASDR of protein–energy malnutrition from 1990 to 2019.

**Figure S3.** The global disease burden of protein–energy malnutrition for both genders in 204 countries and territories. (A) The age-standardized DALY rate of protein–energy malnutrition in 2019. (B) The estimated annual percentage change (EAPC) in the age-standardized DALY rate of protein–energy malnutrition from 1990 to 2019.

**Figure S4.** The years of life lost (YLL) and years lived with disability (YLD) rates of protein–energy malnutrition among gender and age. (A) YLL rate. (B) YLD rate.

**Figure S5.** Age-standardized (A) death rates, and (B) disability-adjusted life year for protein–energy malnutrition for 21 GBD regions and by Socio-Demographic Index, 1990–2019. There was clearly an ASR downtrend of the prediction curve when the SDI went up. Expected values based on Socio-Demographic Index and disease rates in all locations are shown as the black line.

**Figure S6.** Age-standardized (A) prevalence, (B) death, and (C) DALY rates for PEM for 195 countries and territories by Socio-demographic Index, 1990–2019. There was a clearly ASR downtrend of the prediction curve when the SDI went up. Expected values based on Socio-demographic Index and disease rates in all locations are shown as the black line.

**Figure S7.** The association between Human Development Index (HDI) and estimated annual percentage change (EAPC) in age-standardized prevalence rate (ASPR), age-standardized death rate (ASDR), and age-standardized disability-adjusted life years of protein–energy malnutrition. HDI

(2019) was negatively associated with EAPC in (A) ASPR ( $\rho = -0.53$ ,  $P < 0.001$ ), (B) APSR ( $\rho =$

**Figure S8.** The proportion of the five age groups for protein–energy malnutrition death cases (ASDR,  $\rho = -0.42$ ,  $P < 0.001$ ), and (C) age-standardized DALY ( $\rho = -0.64$ ,  $P < 0.001$ ) between 1990 and 2019 globally, and in High, High-middle, Middle, Low-middle, and Low SDI quintiles. The populations were divided into five age groups: under 5, 5–14 years, 15–49 years, 50–69 years, and 70+ years. SDI values can be used to judge the degree of economic development of a country or region.

**Figure S9.** The proportion of the five age groups for protein–energy malnutrition DALY cases between 1990 and 2019 globally, and in High, High-middle, Middle, Low-middle, and Low SDI quintiles. The populations were divided into five age groups: under 5, 5–14 years, 15–49 years, 50–69 years, and 70+ years. SDI values can be used to judge the degree of economic development of a country or region.

**Figure S10.** JointPoint regression analysis of the age-standardized prevalence rates for PEM from 1990 to 2019. (A) The age-standardized prevalence rate in High SDI quintiles; (B) Age-standardized prevalence rate in High-middle SDI quintiles; (C) Age-standardized prevalence rate in Middle SDI quintiles; (D) Age-standardized prevalence rate in Low-middle SDI quintiles; (E) Age-standardized prevalence rate in Low SDI quintiles. The prevalence of High SDI, High-middle SDI, and Middle SDI quintiles increased from 1990 to 2011, and the Low-middle SDI and Low SDI decreased at the

same time. The prevalence of all SDI groups went through a U-shaped curve from 2011 to 2019.

**Figure S11.** JointPoint regression analysis of the age-standardized death rates for PEM from 1990 to 2019. (A) The age-standardized death rate in High SDI quintiles; (B) Age-standardized death rate in High-middle SDI quintiles; (C) Age-standardized death rate in Middle SDI quintiles; (D) Age-standardized death rate in Low-middle SDI quintiles; (E) Age-standardized death rate in Low SDI quintiles. As for the JointPoint of deaths, High-middle SDI, Middle SDI, and Low SDI decreased from 1990 to 2019 and the High SDI and Low-middle SDI decreased from 2000 to 2019.

**Figure S12.** JointPoint regression analysis of the age-standardized DALY rates for PEM from 1990 to 2019. (A) Age-standardized DALY rate in High SDI quintiles; (B) Age-standardized DALY rate in High-middle SDI quintiles; (C) Age-standardized DALY rate in Middle SDI quintiles; (D) Age-standardized DALY rate in Low-middle SDI quintiles; (E) Age-standardized DALY rate in Low SDI quintiles. The JointPoint of all SDI groups except the High SDI group decreased over time.

**Table S1.** The death cases and age-standardized death of PEM in 1990 and 2019, and its temporal trends from 1990 to 2019.

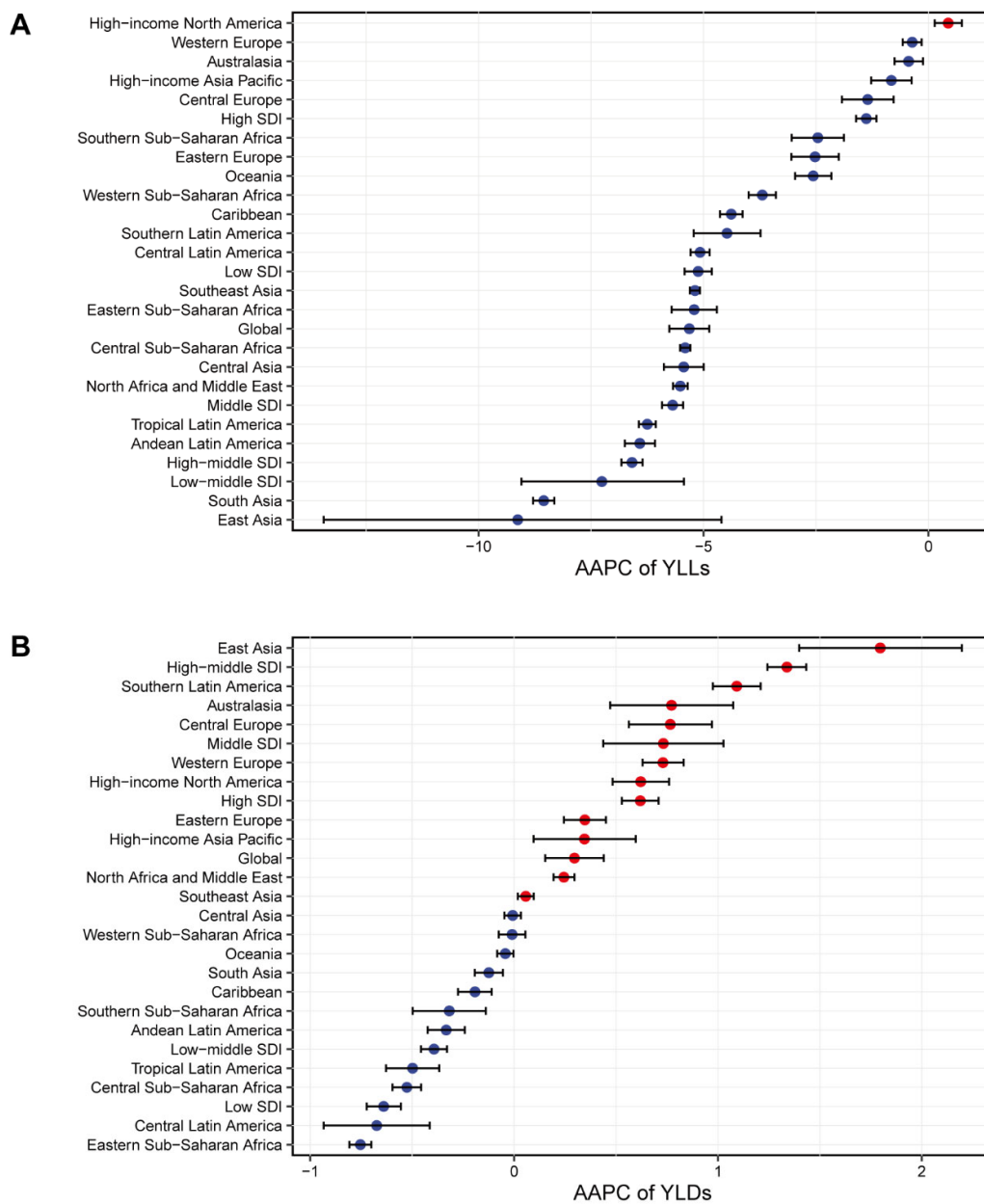
**Table S2.** The DALY cases and age-standardized DALY of PEM in 1990 and 2019, and its temporal trends from 1990 to 2019.

**Table S1.** The death cases and age-standardized death of PEM in 1990 and 2019, and its temporal trends from 1990 to 2019.

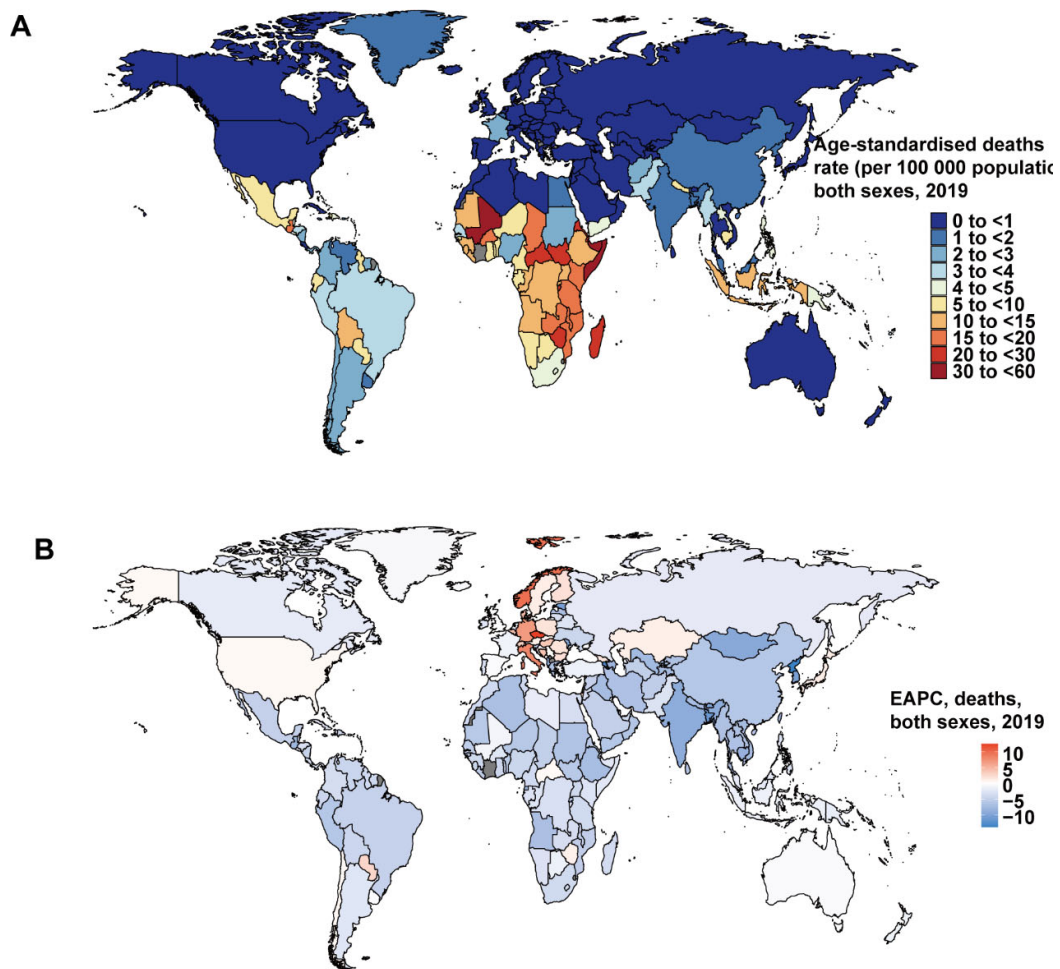
	1990		2019		1990-2019
	Death cases	ASR per 100,000	Death cases	ASR per 100,000	EAPC
	No. (95% UI)	No. (95% UI)	No. (95% UI)	No. (95% UI)	No. (95% CI)
Global	656313.6 (495905.4-877702.4)	11.9 (9.1-15.5)	212242.1 (185402.8-246217)	3 (2.6-3.5)	-5.15 (-5.5--4.8)
Social-demographic index					
Low SDI	235171.1 (180589.6-313513.1)	36.7 (29.4-46.6)	94539.2 (75150.1-119848.7)	9.8 (8.1-12)	-4.74 (-4.9--4.58)
Low-middle SDI	296837.5 (196325.9-426549.6)	24.5 (16.3-34.2)	44468.2 (37729.8-52975.1)	3.3 (2.9-3.9)	-7.87 (-8.78--6.95)
Middle SDI	96102.4 (82811.5-111317.2)	7.9 (7-8.8)	45104.2 (40443-49013.4)	2.5 (2.2-2.7)	-3.93 (-4.11--3.75)
High-middle SDI	21159.9 (18701.8-24247.1)	2.2 (2-2.5)	13680.8 (11895.1-14893.5)	0.8 (0.7-0.9)	-3.85 (-4.17--3.53)
High SDI	6707.6 (5774.5-7320.7)	0.7 (0.6-0.8)	14291.9 (11310.4-15824.9)	0.6 (0.5-0.7)	-0.76 (-0.96--0.55)
Region					
Central Asia	368 (321.7-421)	0.5 (0.4-0.5)	131.1 (110.8-149.9)	0.2 (0.2-0.2)	-3.43 (-3.71--3.14)
Central Europe	128.6 (116.6-145.4)	0.1 (0.1-0.1)	333.6 (233.9-382.3)	0.2 (0.1-0.2)	1.06 (0.5-1.63)
Eastern Europe	471.8 (367.9-536.6)	0.2 (0.2-0.2)	342.8 (231.2-399.2)	0.1 (0.1-0.1)	-2.92 (-3.46--2.38)
Australasia	53.9 (44.2-66.3)	0.3 (0.2-0.3)	147.9 (118.3-171)	0.3 (0.2-0.3)	-0.47 (-0.85--0.08)
High-income Asia Pacific	578.9 (520.6-727.3)	0.3 (0.3-0.4)	1518.6 (1159.1-1733.9)	0.3 (0.2-0.3)	-1.29 (-1.77--0.79)
High-income North America	2579.6 (2194.5-2763.1)	0.7 (0.6-0.8)	6012.1 (5023.1-6518.5)	0.8 (0.7-0.9)	0.17 (-0.19-0.54)
Southern Latin America	1524.5 (1407.8-1633.2)	3.4 (3.1-3.6)	1909.1 (1665.1-2095)	2.3 (2-2.5)	-1.8 (-2.42--1.17)
Western Europe	3090 (2580.9-3473.7)	0.6 (0.5-0.7)	7179.3 (5420.7-8344.1)	0.6 (0.4-0.7)	0.01 (-0.05-0.07)
Andean Latin America	6225.2 (5302.5-7322.6)	18.2 (16-20.5)	2597 (2115-3118.7)	4.7 (3.9-5.7)	-5.26 (-5.51--5)
Caribbean	4546.8 (3493.1-6019.2)	12.2 (9.7-15.8)	1741.8 (1331.2-2295.8)	3.9 (2.9-5.2)	-3.63 (-4.06--3.19)
Central Latin America	19927.9 (17045.3-21456)	19 (15.4-20.3)	11074.5 (9433-12628.4)	5 (4.2-5.7)	-5.05 (-5.2--4.9)
Tropical Latin America	15725.1 (14174.7-17657.6)	12.7 (11.5-13.9)	7946.5 (6884.3-8615.3)	3.7 (3.2-4)	-4.48 (-4.67--4.3)
North Africa and Middle East	15915.9 (10559.8-29411.6)	4.1 (2.9-7)	4940.7 (3919.4-6594.8)	1.2 (1-1.5)	-4.53 (-4.67--4.39)
South Asia	282829.2 (169738.5-415458.3)	22.9 (13.6-33.3)	25109.4 (18221.6-33268.2)	1.7 (1.2-2.2)	-8.77 (-8.92--8.61)
East Asia	42000.8 (36143.9-48328.3)	5.1 (4.5-5.7)	13579 (11603.2-15450.5)	1.1 (0.9-1.2)	-8.82 (-11.27--6.31)
Oceania	300.2 (241-375.7)	8.8 (7.5-10.3)	302.6 (224.1-421)	4.7 (3.7-6.3)	-2.04 (-2.17--1.91)
Southeast Asia	43849.9 (29464.1-57134.8)	14.8 (10.6-17.7)	24989.2 (21975.1-27500.3)	5.5 (4.8-6.1)	-3.07 (-3.34--2.81)
Central Sub-Saharan Africa	27355.3 (18607.9-39308.2)	42.1 (32.4-54.2)	10497.4 (7374.1-14800.4)	12.8 (9.1-17.8)	-4.01 (-4.41--3.6)
Eastern Sub-Saharan Africa	127411.8 (99224.3-165143.7)	63.8 (51.7-79.4)	49774.1 (40552.2-62294.5)	17.6 (14.6-20.7)	-4.72 (-4.89--4.54)
Southern Sub-Saharan Africa	8498.1 (6882.2-10410.8)	15.8 (13.6-18.4)	5535.4 (4424.8-6866.3)	8.3 (6.9-10.2)	-1.71 (-1.94--1.47)
Western Sub-Saharan Africa	52932.2 (40387.3-67848.1)	21.1 (17.4-25.4)	36579.9 (27465.1-48179.9)	8.5 (6.8-10.7)	-3.48 (-3.75--3.21)

**Table S2.** The DALY cases and age-standardized DALY of PEM in 1990 and 2019, and its temporal trends from 1990 to 2019.

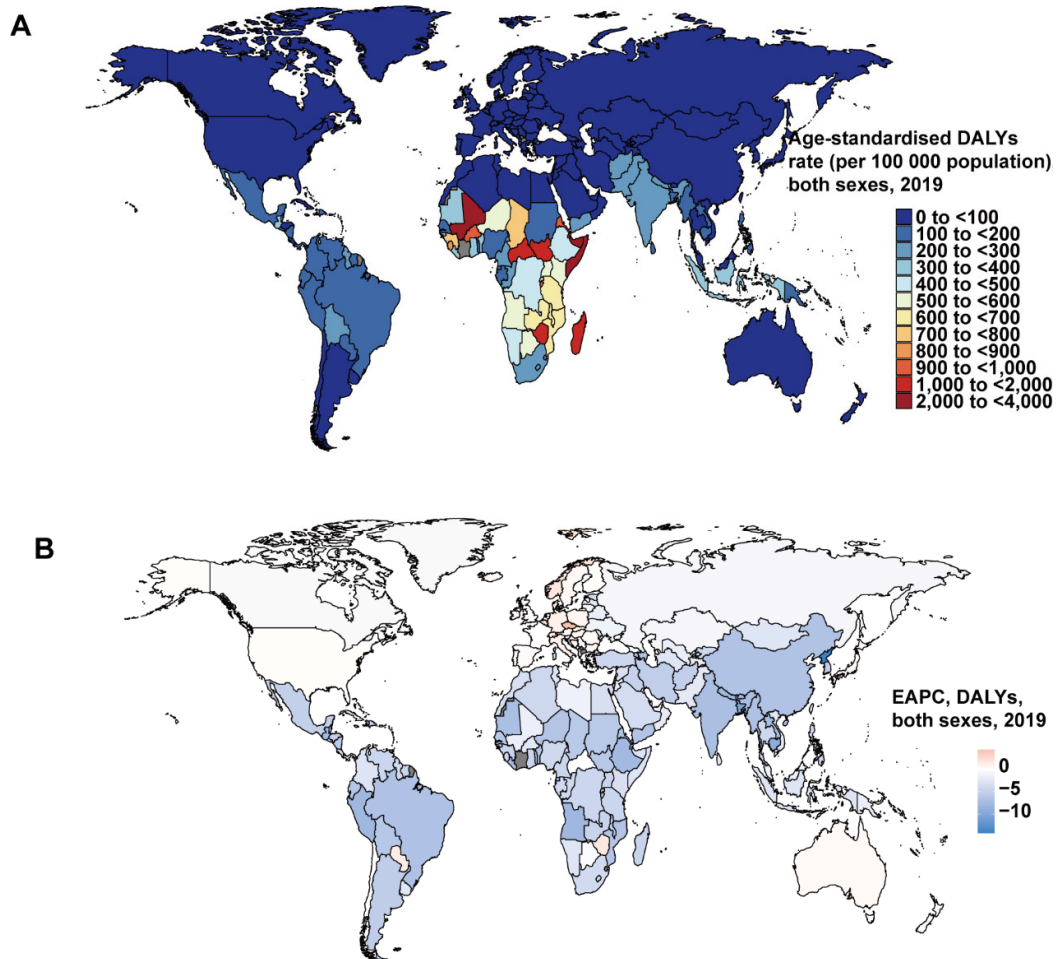
	1990		2019		1990-2019
	DALY cases	ASR per 100,000	DALY cases	ASR per 100,000	EAPC
	No. (95% UI)	No. (95% UI)	No. (95% UI)	No. (95% UI)	No. (95% CI)
Global	52743908.1 (40250363.1-70481551.6)	855.3 (654.3-1138.2)	15256524.2 (12565113.6-18327802.9)	218.3 (179.5-262.8)	-5.03 (-5.27--4.79)
Social-demographic index					
Low SDI	19211755.5 (14708633.7-25949125.4)	2212.5 (1717.4-2942.8)	7617058.5 (5999962.7-9645847.9)	524.6 (422.1-652.2)	-5.13 (-5.27--4.99)
Low-middle SDI	24444271.9 (16525828.1-34962690.2)	1552.9 (1055.4-2209.1)	3729158.4 (3056888.7-4507283)	222.8 (183.8-268.2)	-7.28 (-7.81--6.74)
Middle SDI	7090465 (6089965.2-8474681.5)	388.9 (337.5-455.7)	2491723.5 (2013108.7-3038168.2)	118.6 (96.8-142.9)	-4.15 (-4.32--3.98)
High-middle SDI	1635820.8 (1399234.3-1921583.3)	156.4 (134.2-183.9)	882525.8 (643211-1161046.6)	64 (46.1-85.1)	-3.43 (-3.71--3.16)
High SDI	336117 (254323.4-440884.8)	38.7 (29-51.2)	526299.8 (390895.7-690306.8)	40 (28.2-55)	-0.19 (-0.28--0.09)
Region					
Central Asia	50004.9 (40531.5-60232.1)	58.1 (47.6-69.9)	30296.1 (21060.7-41052)	32.8 (23-44.3)	-2.42 (-2.55--2.29)
Central Europe	26249.6 (18784.2-35914.2)	24.4 (17.7-32.6)	29992.4 (21271.8-41670.4)	26.4 (18-37.4)	-0.13 (-0.28-0.03)
Eastern Europe	65878.3 (48795.4-88163.2)	32.1 (23.7-43)	54555.2 (37648.4-76582.8)	28.9 (19.6-40.8)	-1.14 (-1.37--0.91)
Australasia	3337.5 (2370.6-4631.5)	16 (11.3-22.4)	6488.4 (4695.2-8851.4)	18.3 (12.6-25.8)	0.31 (0.14-0.48)
High-income Asia Pacific	35577.7 (27006.6-47122.5)	20.2 (15.3-26.7)	50490.1 (38928-65083)	20.2 (14.5-27.6)	-0.56 (-0.85--0.27)
High-income North America	89245 (68712.8-117733.4)	28.4 (21.2-38.5)	163453.3 (129364.4-205374.2)	33.5 (25-44.2)	0.1 (-0.09-0.29)
Southern Latin America	85632.7 (77751.3-94710.1)	172.5 (157-190.5)	41891.3 (36969.7-47027.5)	57.3 (50.2-64.9)	-4.23 (-4.55--3.91)
Western Europe	207939.5 (144923.8-288449.3)	48.4 (32.8-68.8)	331120.5 (234716.4-443062.7)	58 (38.7-81.7)	0.44 (0.3-0.57)
Andean Latin America	425581.6 (352256.6-519112.2)	880.3 (740.5-1053.4)	83976.5 (64967.3-105113.3)	139.4 (108.3-173.4)	-6.92 (-7.18--6.66)
Caribbean	356913.3 (267955.9-486329.7)	873 (661.7-1184.2)	106350.2 (75786.6-151585.7)	254.3 (178-366.2)	-3.87 (-4.32--3.42)
Central Latin America	1090198.5 (969608.6-1200048.6)	640.6 (556.9-696.4)	375493.6 (318561.5-446480.9)	162.6 (137.4-193.9)	-5.06 (-5.19--4.93)
Tropical Latin America	1127287.7 (1000554.2-1286087)	707.5 (629.9-802.3)	245192.4 (216192-274543.2)	123.1 (107.6-140)	-6.53 (-6.82--6.23)
North Africa and Middle East	1425848 (975818.5-2566601)	288 (201.8-510.2)	506176.9 (390162.6-681963.3)	87.8 (68.5-117.3)	-4.45 (-4.63--4.26)
South Asia	24562743.7 (15674936.9-35552701.2)	1596.8 (1022.8-2302.7)	3645460.9 (2809838.2-4616537)	217.6 (167.9-275.5)	-6.92 (-7.15--6.68)
East Asia	3176825.4 (2655376.8-3727244.4)	277.3 (234.5-322.9)	816395.1 (572420.2-1111906.8)	54.6 (39.7-73.9)	-8.99 (-11.16--6.77)
Oceania	22700.7 (17755.3-28922.4)	314.3 (259.7-385.4)	23551.6 (17555-32009.5)	171.5 (132.9-226.4)	-1.92 (-2.12--1.73)
Southeast Asia	2857700.6 (1961018.6-3943041.3)	593.7 (420.1-783.1)	1064141.8 (872005.6-1266714.3)	185.7 (154.3-218.8)	-3.9 (-4.15--3.64)
Central Sub-Saharan Africa	2211668.3 (1479913.5-3251527.6)	2334 (1644.3-3278.3)	738212.1 (520971.8-1039644.4)	492.9 (360.2-672.9)	-5.17 (-5.68--4.66)
Eastern Sub-Saharan Africa	9878708 (7575392-12980236.3)	3290.9 (2586.9-4235)	3500613.4 (2756804.3-4470743.5)	716.6 (585.7-886)	-5.4 (-5.57--5.22)
Southern Sub-Saharan Africa	656313 (518633.8-825158.2)	1001 (808.4-1236.6)	377762.1 (288766.7-484396.5)	488.5 (377.9-621.1)	-1.62 (-2.23--1.01)
Western Sub-Saharan Africa	4387553.9 (3318636.7-5678503)	1331.8 (1030.1-1702.4)	3064910.3 (2281373.2-4008485.3)	479.3 (367.4-615)	-3.92 (-4.21--3.63)



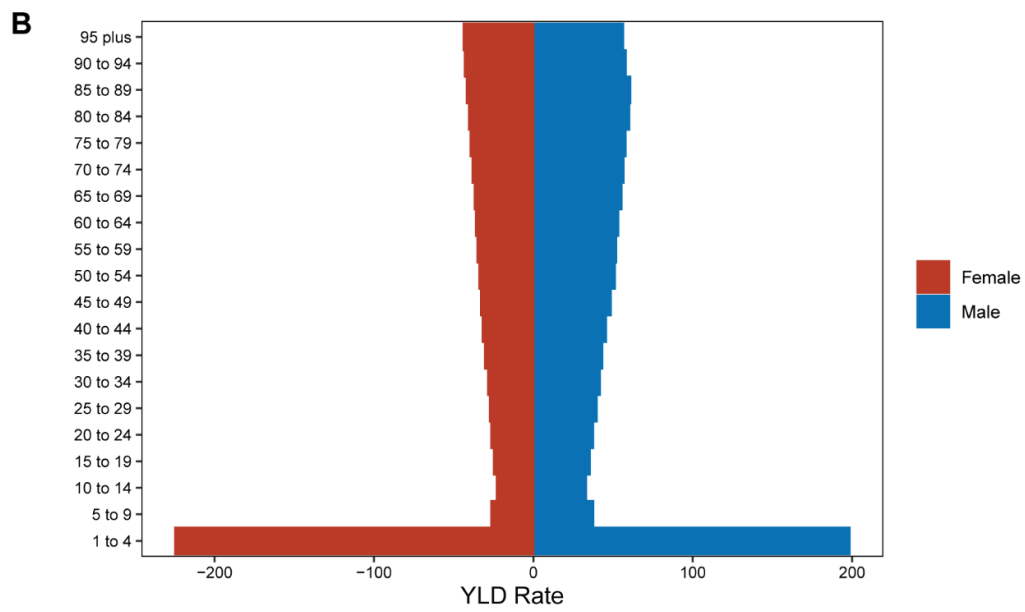
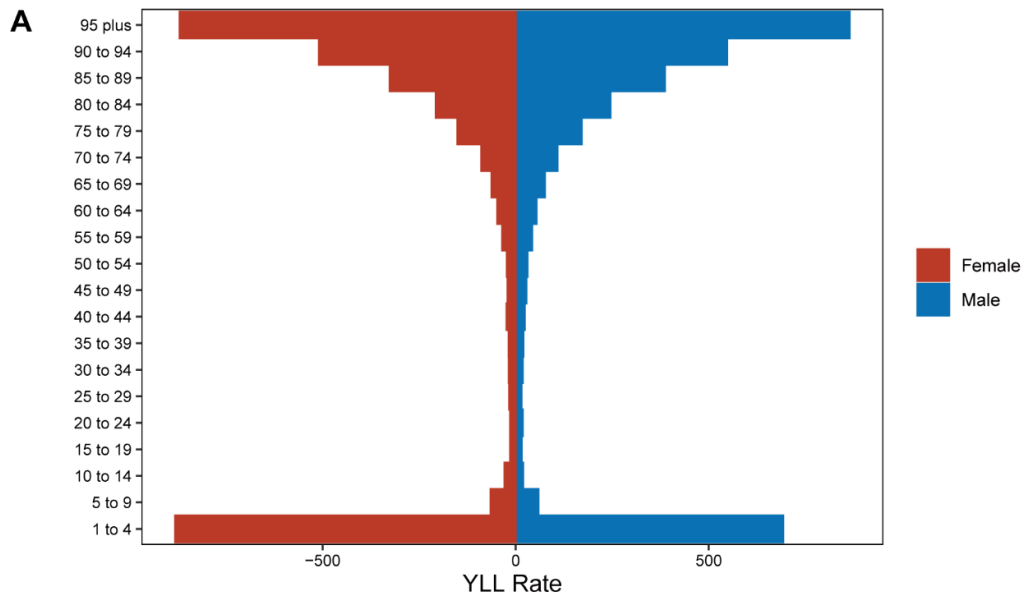
**Figure S1**



**Figure S2**



**Figure S3**



**Figure S4**



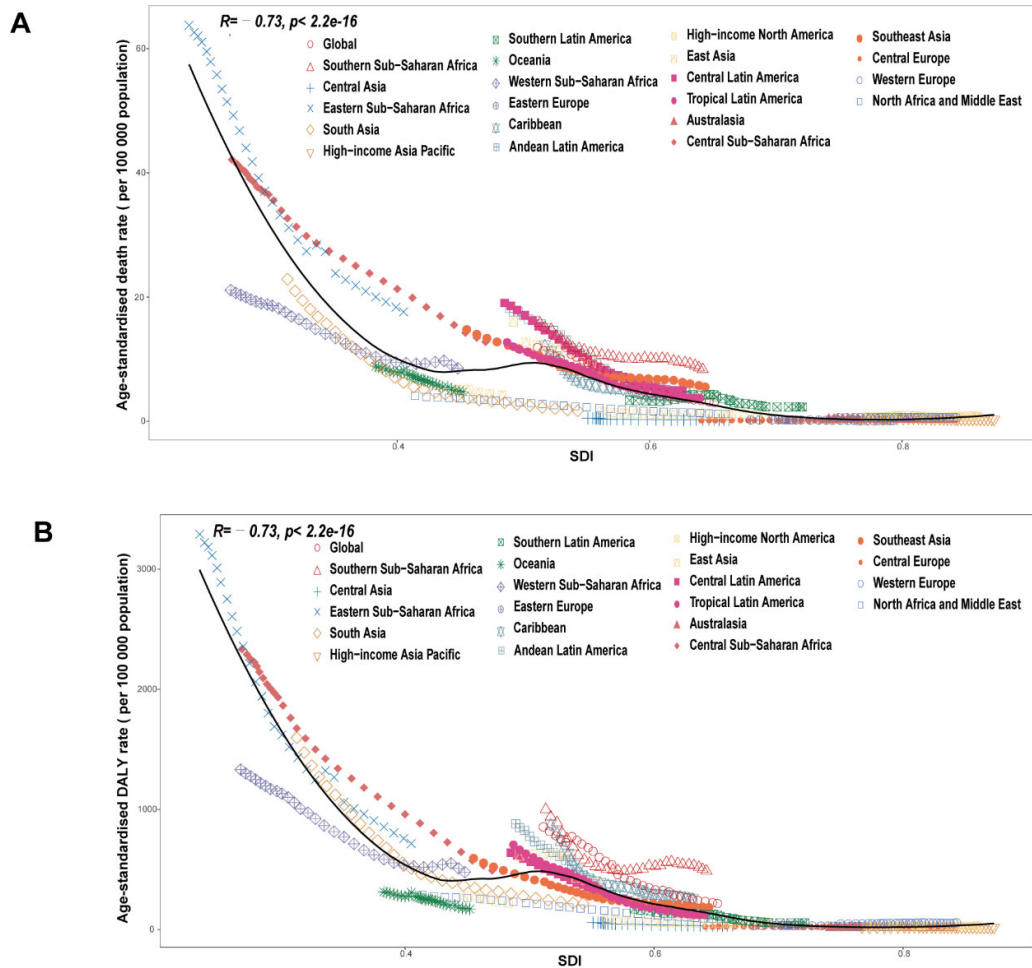
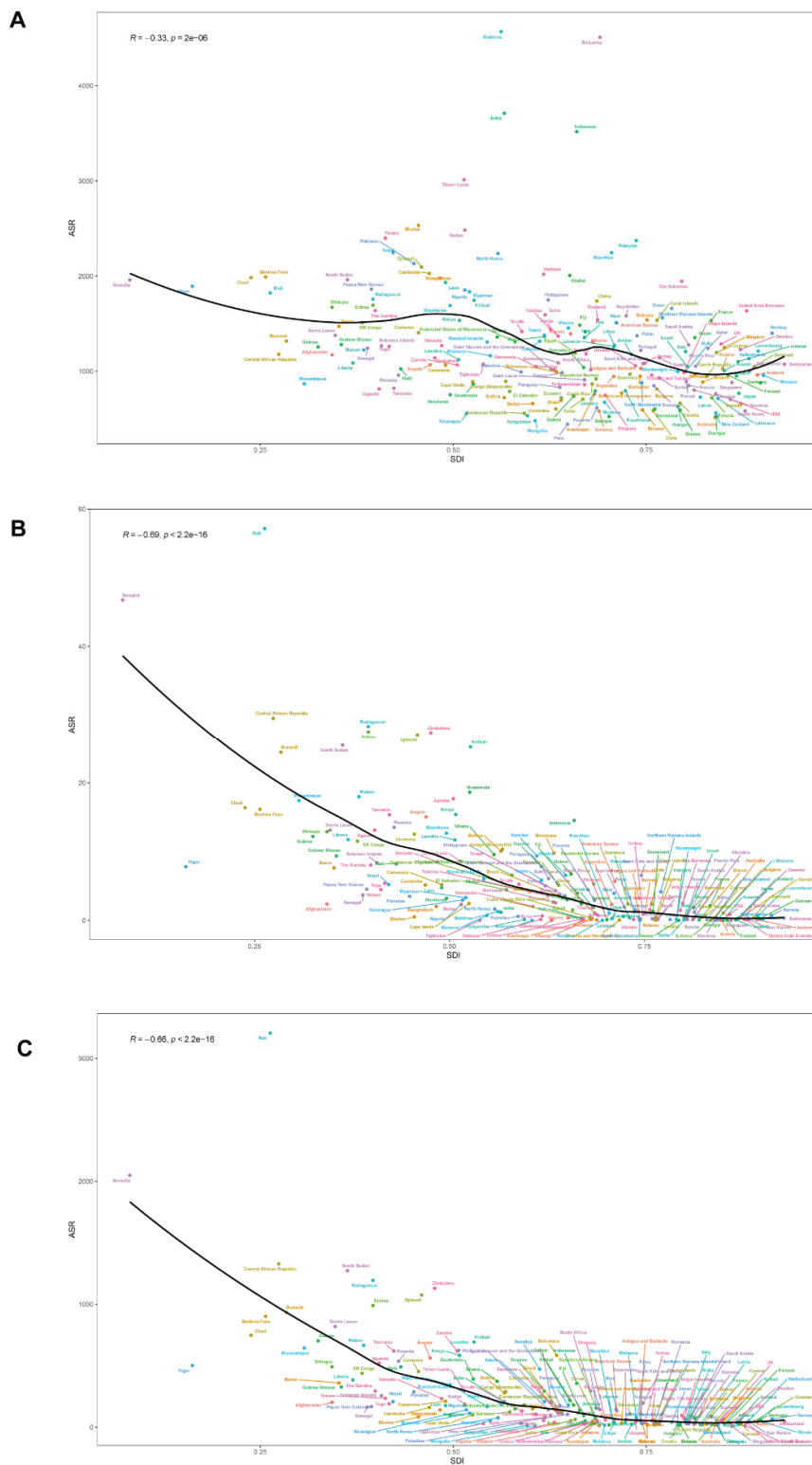
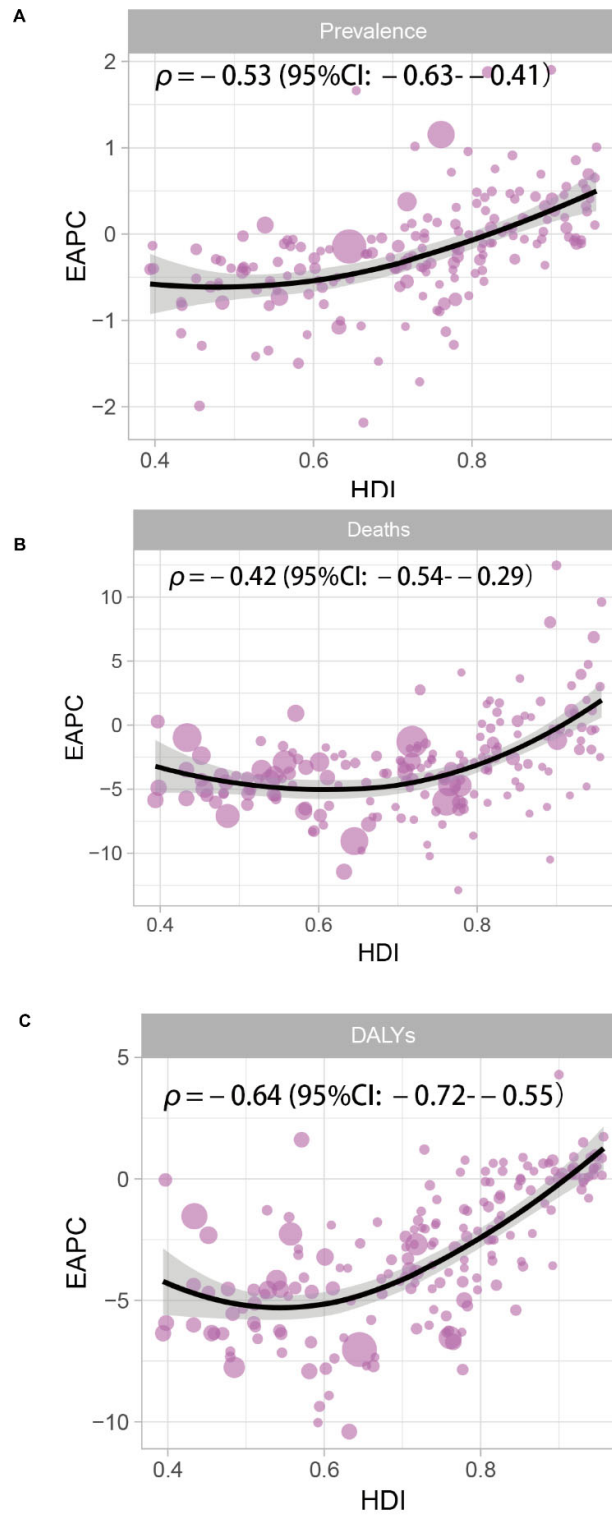


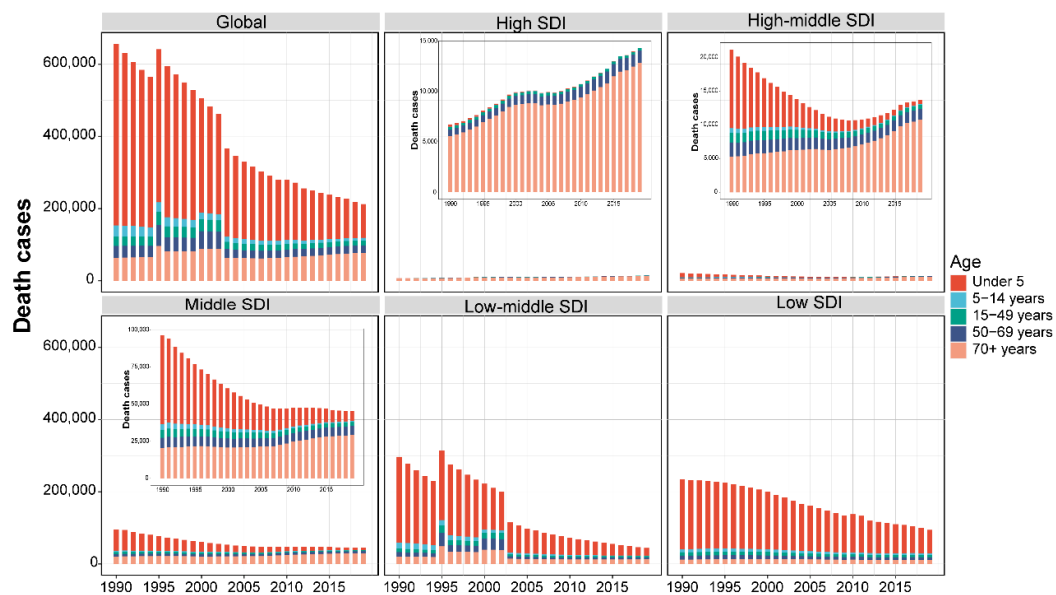
Figure S5



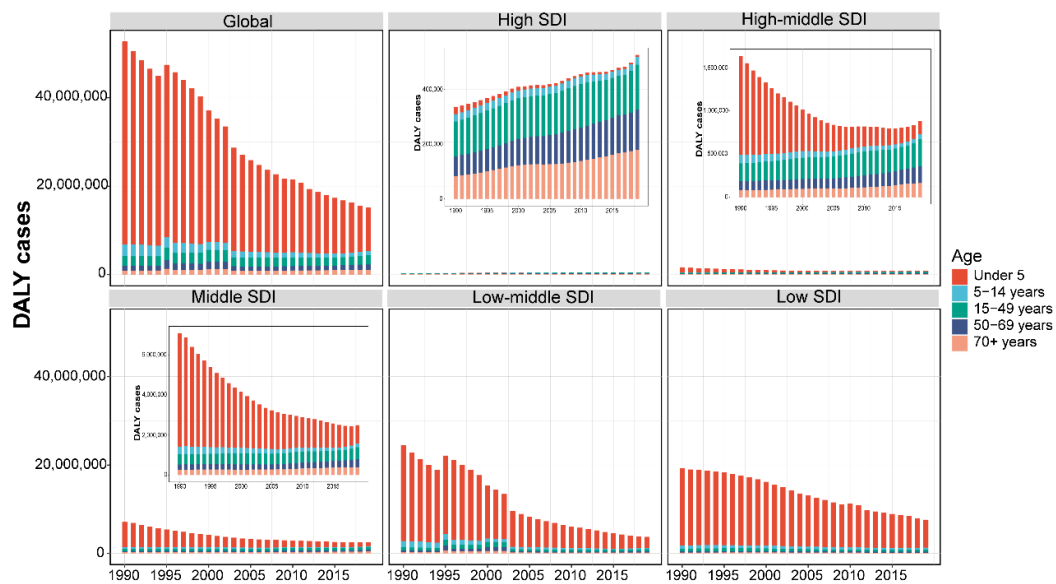
**Figure S6**



**Figure S7**

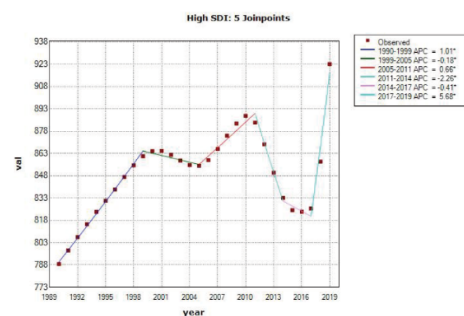


**Figure S8**

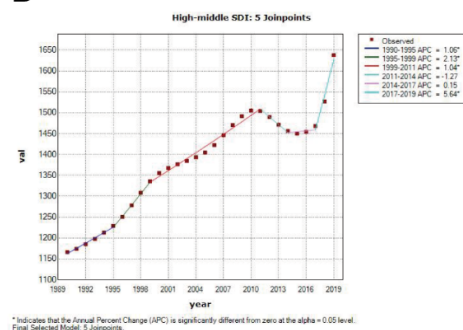


**Figure S9**

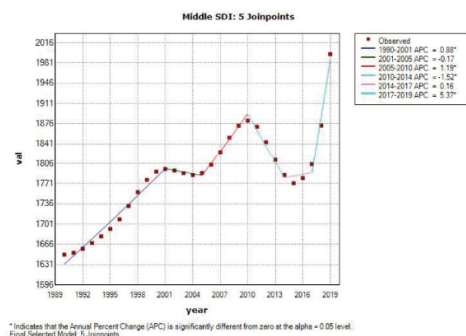
**A**



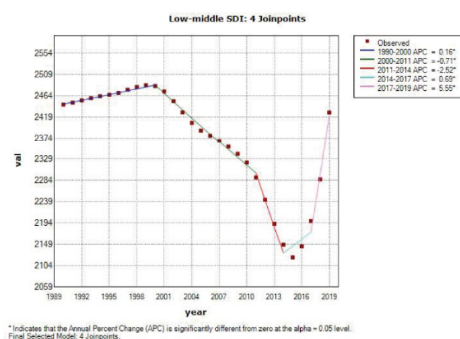
**B**



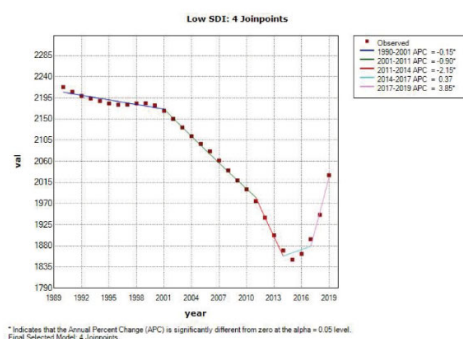
**C**



**D**

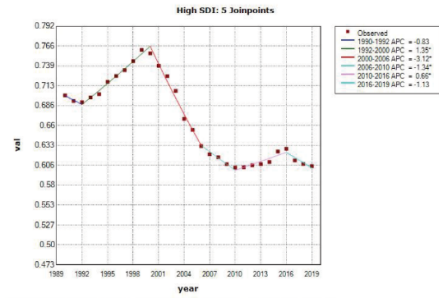


**E**

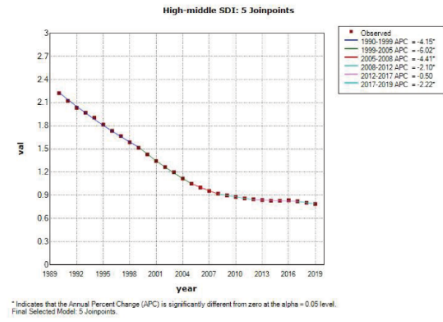


**Figure S10**

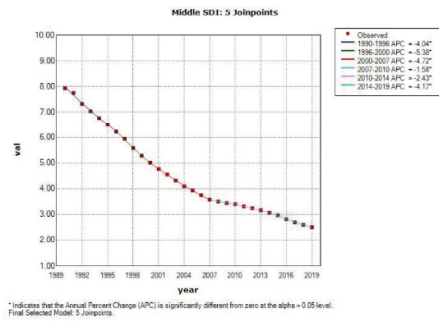
A



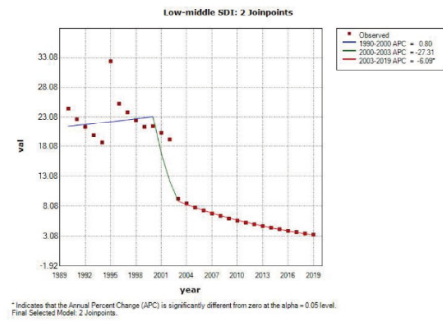
B



C



D



E

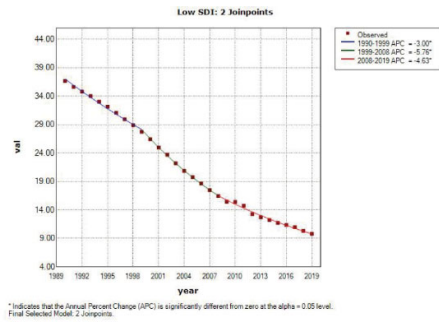
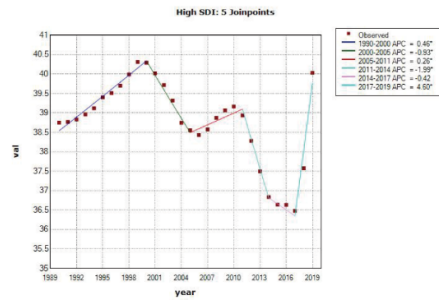
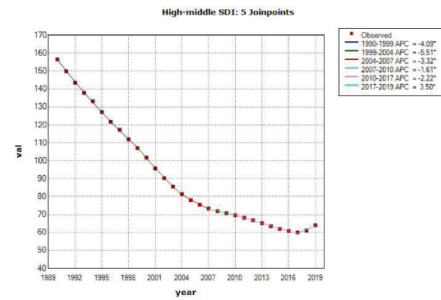


Figure S11

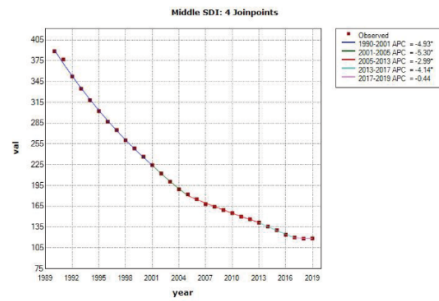
A



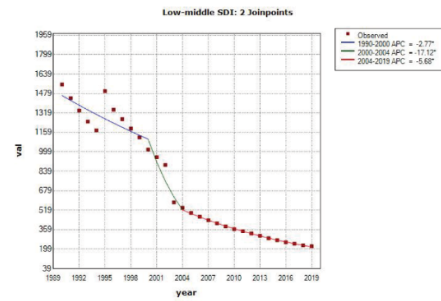
B



C



D



E

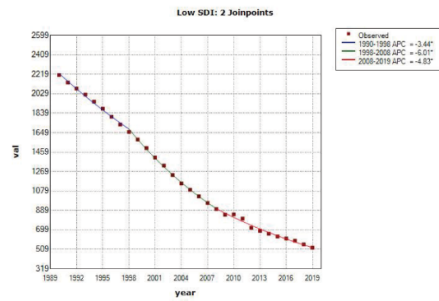


Figure S12