

# Dandelion Polysaccharides Ameliorate High-Fat-Diet-Induced Atherosclerosis in Mice through Antioxidant and Anti-Inflammatory Capabilities

Shuaishuai Zhou <sup>1</sup>, Zi Wang <sup>1,2</sup>, Yanling Hao <sup>1,2</sup>, Peng An <sup>1,2</sup>, Junjie Luo <sup>1,2,\*</sup> and Yongting Luo <sup>1,2,\*</sup>

<sup>1</sup> Department of Nutrition and Health, China Agricultural University, Beijing 100193, China; sszhou\_2020@163.com (S.Z.); zxcvbnm7895123hh@163.com (Z.W.); haoyl@cau.edu.cn (Y.H.); an-peng@cau.edu.cn (P.A.)

<sup>2</sup> Food Laboratory of Zhongyuan, Luohe 462300, China

\* Correspondence: luojj@cau.edu.cn (J.L.); luo.yongting@cau.edu.cn (Y.L.)

Table S1. Primers for Q-PCR analysis.

Gene	Forward	Reverse
ACTB	GTGACGTTGACATCCGTAAAGA	GCCGGACTCATCGTACTCC
Tnf- $\alpha$	ATGGCCTCCCTCTCATCAGT	TTTGCTACGACGTGGGCTAC
Il1 $\beta$	TGCCACCTTTTGACAGTGATG	TGATGTGCTGCTGCGAGATT
Il6	CCCCAATTTCCAATGCTCTCC	CGCACTAGGTTTGCCGAGTA
Mcp-1	TTAAAAACCTGGATCGGAACCAA	GCATTAGCTTCAGATTACGGGT

### Mac-3

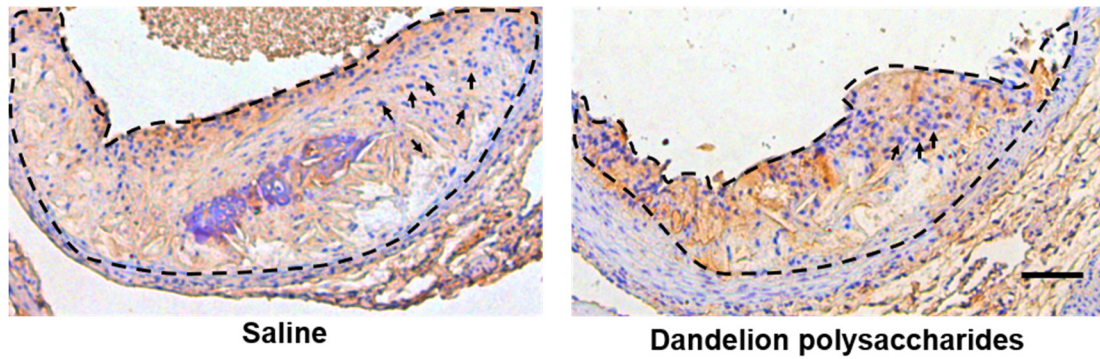


Figure S1. Representative images of immunostained aortic plaques for macrophage using the macrophage marker Mac-3. The scale bar is 100  $\mu$ m.

### $\alpha$ -SMA

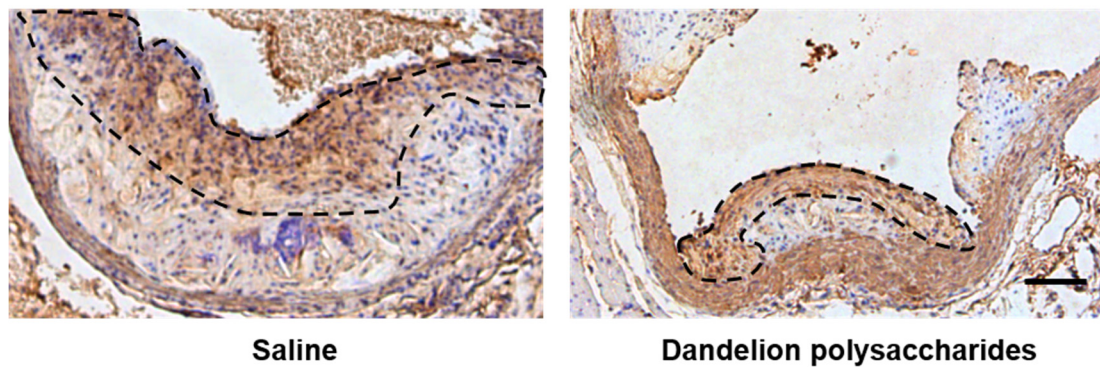


Figure S2. Representative images of immunostained aortic plaques for smooth muscle cells using smooth muscle cells marker  $\alpha$ -SMA. The scale bar is 100  $\mu$ m.