

Supplementary Material

Xia Chen ^{1,†}, Panyang Zhang ^{1,†}, Yajuan Zhang ¹, Shijun Fan ¹, Yan Wei ¹, Zhifan Yang ², Fengchao Wang ^{2,*} and Xi Peng ^{1,3,*}

¹ Clinical Medical Research Center, Southwest Hospital, Third Military Medical University (Army Medical University), Chongqing 400038, China; chenxia05201995@163.com (X.C.); zhangpanyang1@126.com (P.Z.); zyj18696625642@126.com (Y.Z.); fanshijun1211@hotmail.com (S.F.); weiyanyan56333849@163.com (Y.W.)

² Institute of Combined Injury, State Key Laboratory of Trauma, Burns and Combined Injury, College of Preventive Medicine, Third Military Medical University (Army Medical University), Chongqing, 400038, China; yang1269043@163.com

³ State Key Laboratory of Trauma, Burns and Combined Injury, Third Military Medical University (Army Medical University), Chongqing 400038, China

* Correspondence: fengchao.w@foxmail.com (F.W.); pxlrmm@tmmu.edu.cn (X.P.)

† These authors contributed equally to this work.

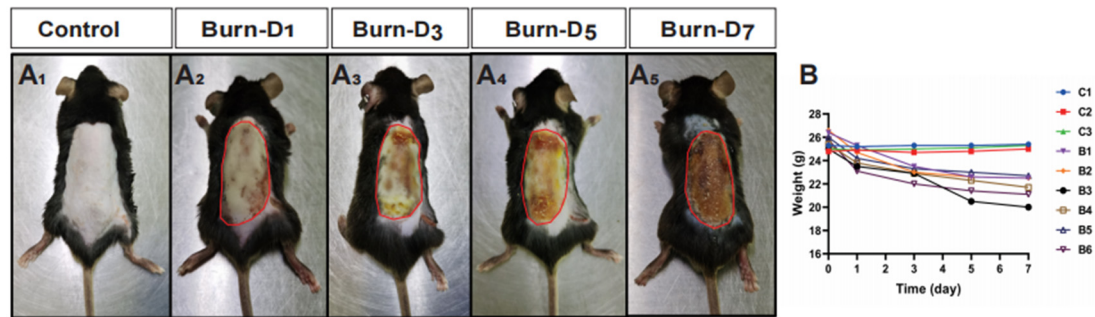


Figure S1. Establishment of burn mouse model. (A) Renderings of the scab area on the back of mice in the Burn group and the Control group. (B) Body weight statistics of Burn group and Control group for 7 consecutive days after burns.

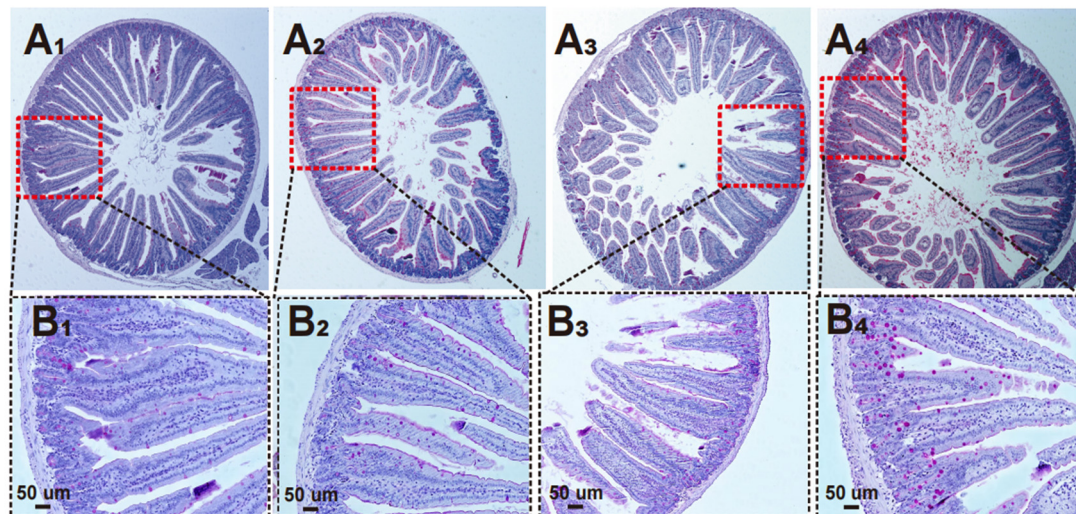


Figure S2. Effects of Gln treatment on pathological damage of the small intestine after burns injury. The black arrow represents the site of injury in the small intestine. (A₁–A₄) Representative full-transverse sections of the proximal jejunum from control and Gln-treated mice stained with PAS staining: (A₁) Control group; (A₂) Burn group; (A₃) Gln group; (A₄) Burn+Gln group. (B₁–B₄) Enlarged image at the black box in B₁–B₄ (n=6).

Table S1. List of primer

Name	Forward primer	Reverse primer
MSTI	CTTCCACTACAACATGAGCAGC	TGCAGGTCCGCACATAATCTT
Yap	TGAGATCCCTGATGATGTACCAC	TGAGATCCCTGATGATGTACCAC
Cdk4	CAGTCTCAGTGTGAGCCG	TGCTCCTCCATTAGGAACTCTC
Olfm4	CAGCCACTTTCCAATTTCACTG	GCTGGACATACTCCTTCACCTTA
cdk2	GCTGGACATACTCCTTCACCTTA	CAGTCTCAGTGTGAGCCG
Sox9	CAGCCCCTTCAACCTTCCTC	TGATGGTCAGCGTAGTCGTATT
cdk1	AGGTACTTACGGTGTGGTGTAT	CTCGCTTTCAAGTCTGATCTTCT
PCNA	TTGCACGTATATGCCGAGACC	GGTGAACAGGCTCATTCATCTCT