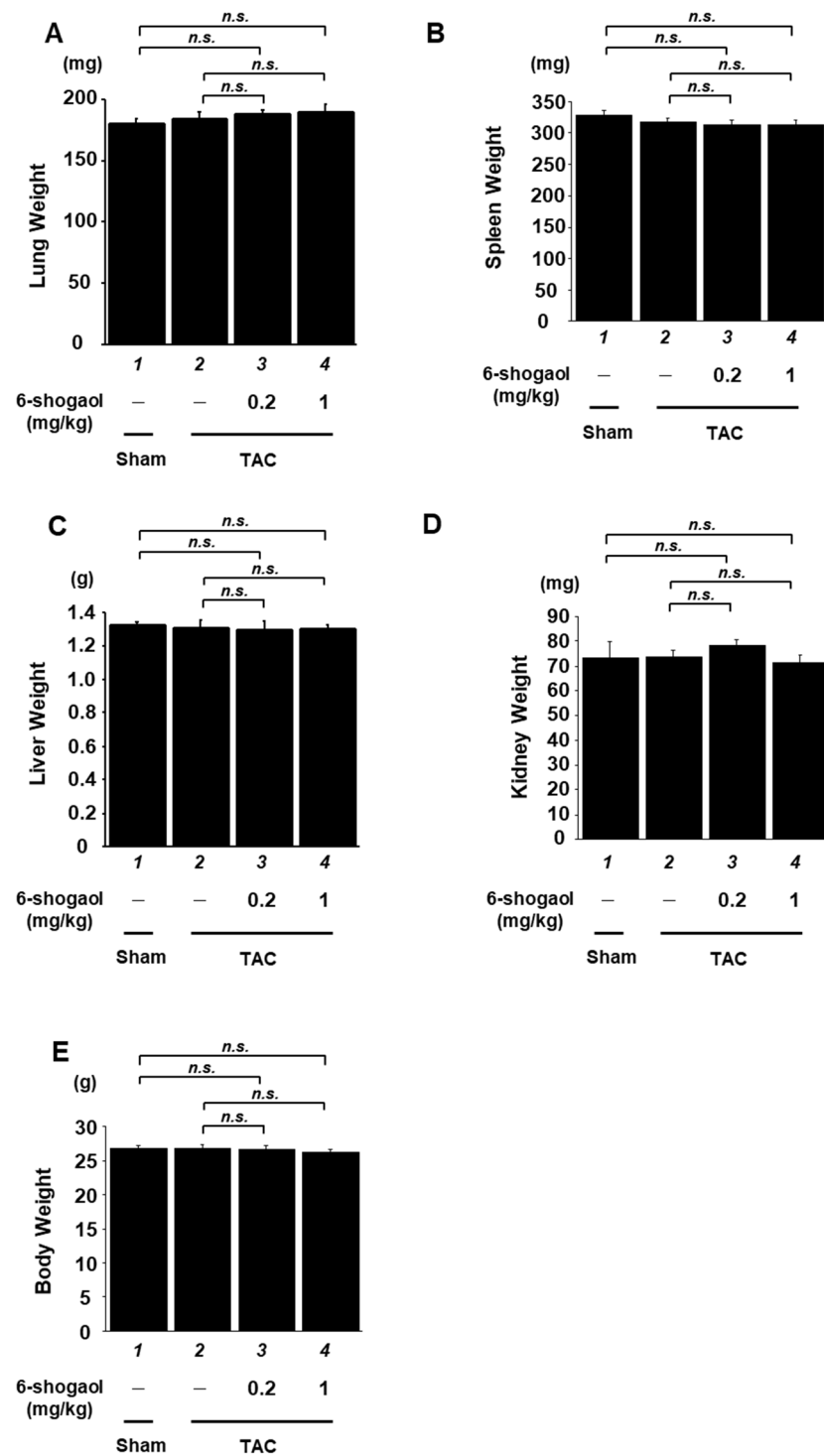


**Table S1.** Ecocardiographic parameters of sham and TAC mice. Mean  $\pm$  SEM of 10 mice from each sham and TAC group. Abbreviations: HW, heart weight; IVSd, interventricular septum thickness at end-diastole; LVIDd, left ventricular internal diameter end-diastole; LVPWd, left ventricular posterior wall diameter, LVMI; left ventricular mass index; EF, ejection fraction.

Parameter	Sham Vehicle		TAC Vehicle		6-shogaol 0.2 mg/kg		6-shogaol 1 mg/kg	
HW (mg)	117.7	$\pm$ 1.2	185.7	$\pm$ 8.2 <sup>**</sup>	172.9	$\pm$ 3.8	141.1	$\pm$ 4.0 <sup>##</sup>
IVSd (mm)	1.24	$\pm$ 0.02	1.71	$\pm$ 0.05 <sup>**</sup>	1.45	$\pm$ 0.08 <sup>#</sup>	1.46	$\pm$ 0.04 <sup>#</sup>
LVIDd (mm)	2.31	$\pm$ 0.04	2.35	$\pm$ 0.1	2.57	$\pm$ 0.11	2.34	$\pm$ 0.06
LVPWd (mm)	1.24	$\pm$ 0.02	1.84	$\pm$ 0.02 <sup>**</sup>	1.56	$\pm$ 0.10 <sup>##</sup>	1.35	$\pm$ 0.03 <sup>##</sup>
LVMI (g/mg)	4.04	$\pm$ 0.11	7.2	$\pm$ 0.55 <sup>**</sup>	6.37	$\pm$ 0.82	5.23	$\pm$ 0.25 <sup>#</sup>
EF (%)	85.1	$\pm$ 0.79	71.2	$\pm$ 1.63 <sup>**</sup>	79.5	$\pm$ 1.79 <sup>##</sup>	84.2	$\pm$ 0.97 <sup>##</sup>

\*  $p < 0.05$ , \*\*  $p < 0.01$  vs. Sham + vehicle group. <sup>#</sup> $p < 0.05$ , <sup>##</sup> $p < 0.01$  vs. TAC + vehicle group.



**Figure S1.** Organ weight and body weight of mice treated with 6-shogaol at doses of 0.2 or 1 mg/kg for 8 weeks. (A) Lung, (B) spleen, (C) liver, and (D) kidney were isolated from the sham and TAC groups at 8 weeks after surgery. (E) Body weight of each group was measured at 8 weeks after surgery. Data are presented as the mean  $\pm$  SEM of six individual experiments.