

Figure S1. Nuclear cardiomyocytes morphology and ultrastructure. Photomicrographs showing ventricular cardiomyocytes in lean mice (A), *ob/ob* mice (B) and *ob/ob* mice treated with melatonin (C) presented different nuclear size and contour. Semithin sections stained by methylene blue-azur II. Ultrastructural evidence of nuclear indentations (arrow) in lean mice (D). Scale bars = A–C: 20 μ m; D: 1 μ m.

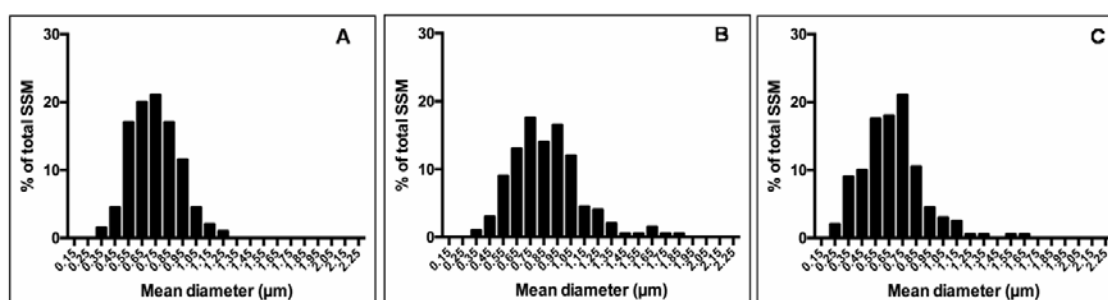


Figure S2. Heart sub-sarcolemmal mitochondrial features. The graphs summarize the SSM mitochondria diameter and distribution along size-classes of lean mice (A), *ob/ob* mice (B) and *ob/ob* mice treated with melatonin (C).