

Supplementary Materials: The role of *Pseudomonas aeruginosa* ExoY in an Acute Mouse Lung Infection Model

Christina Kloth, Bastian Schirmer, Antje Munder, Tane Stelzer, Justin Rothschuh and Roland Seifert

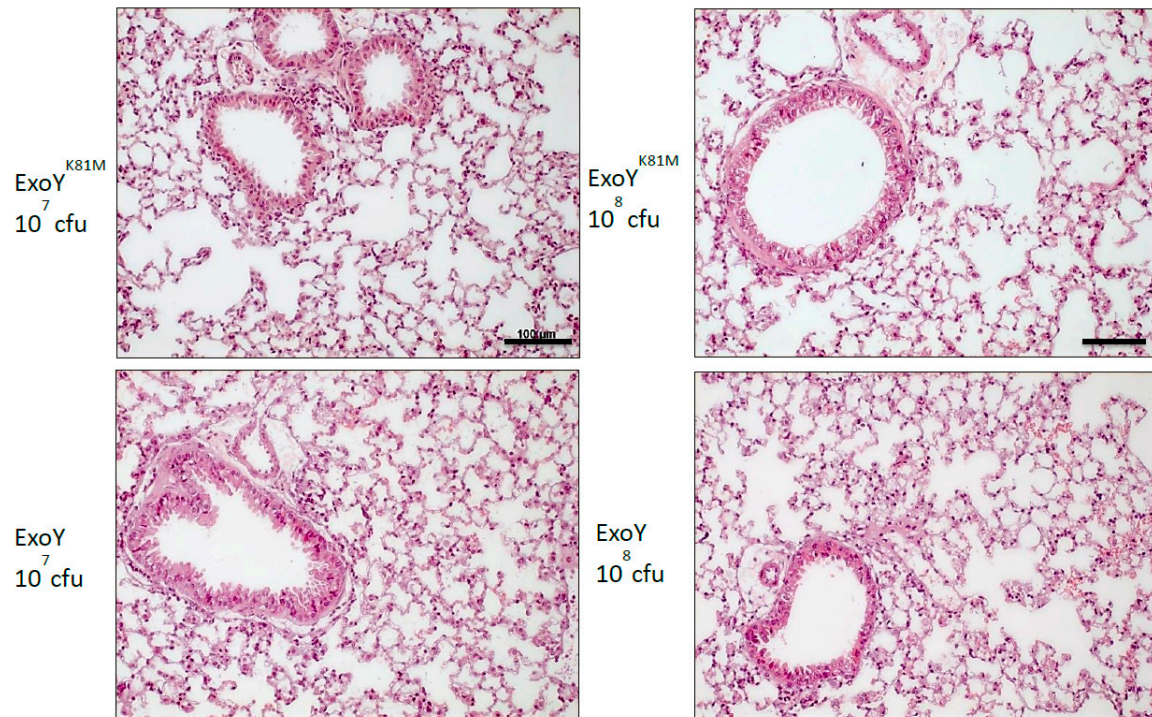


Figure S1. Representative micrographs of ExoY/ExoY^{K81M}-infected mouse lungs 2 h after infection. Standard H&E staining, scale bar = 100 μm.

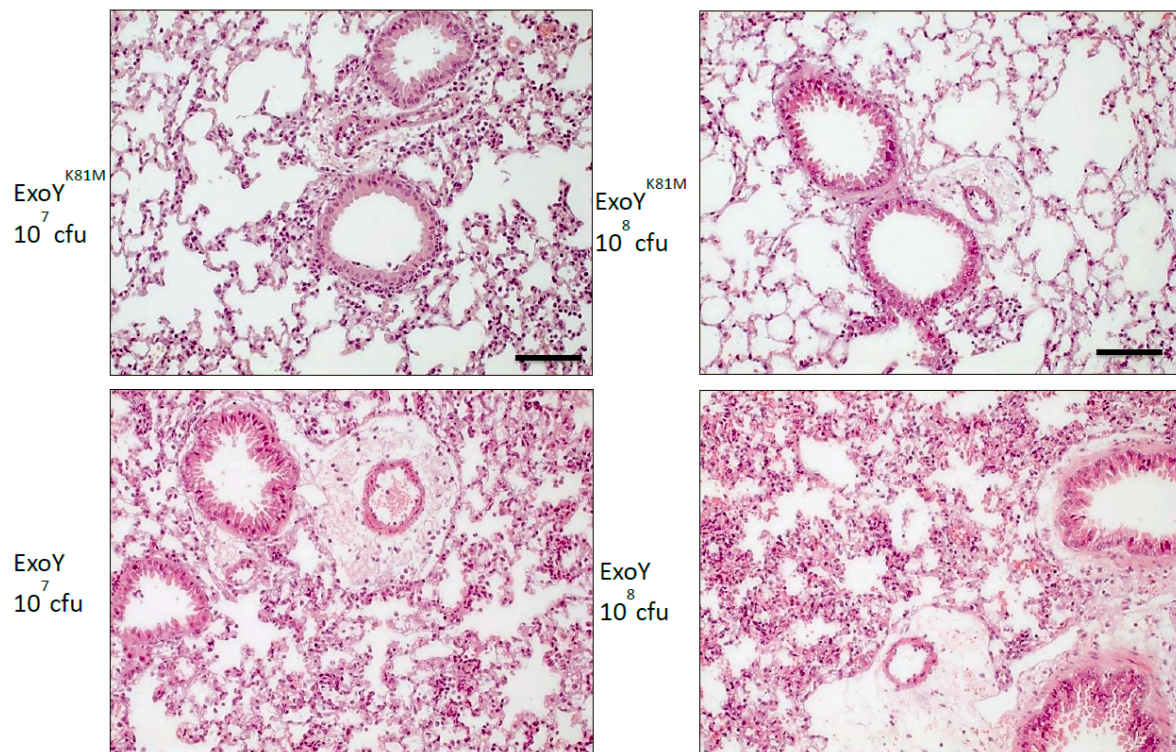


Figure S2. Representative micrographs of ExoY/ExoY^{K81M}-infected mouse lungs 8 h after infection. Standard H&E staining, scale bar = 100 μ m.

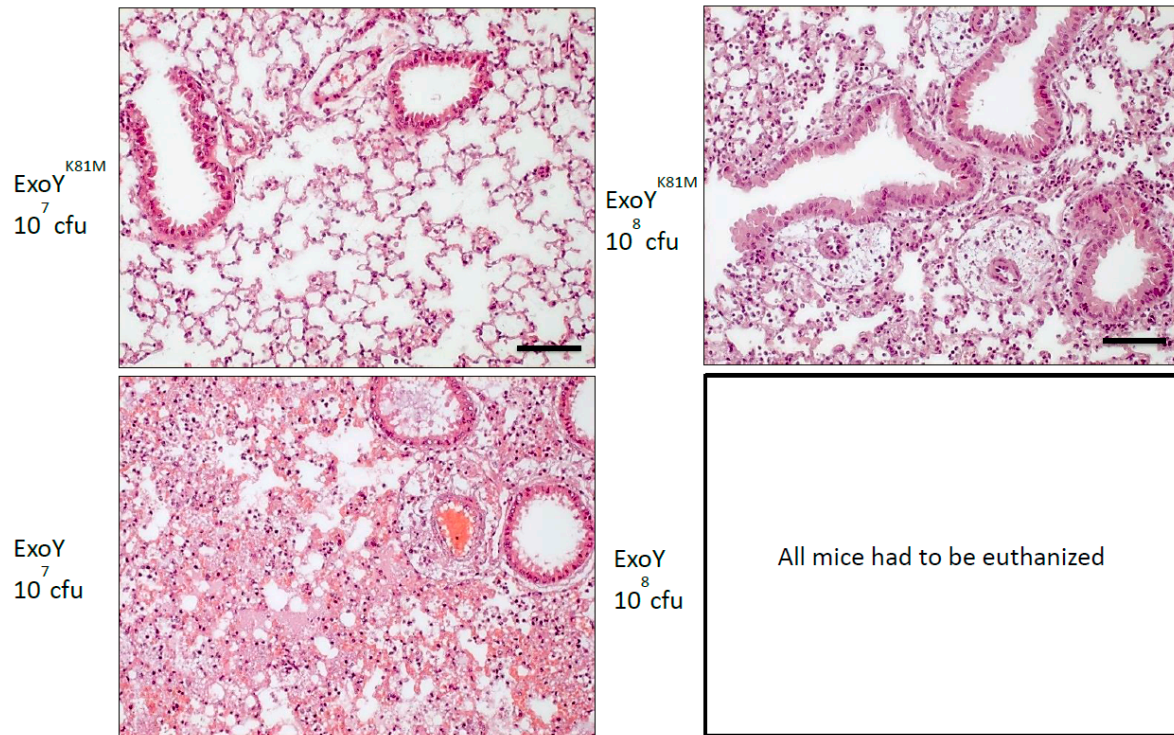


Figure S3. Representative micrographs of ExoY/ExoY^{K81M}-infected mouse lungs 48 h after infection. Standard H&E staining, scale bar = 100 μ m. All mice infected with 10^8 cfu of ExoY had to be sacrificed because they met the pre-defined termination criteria.

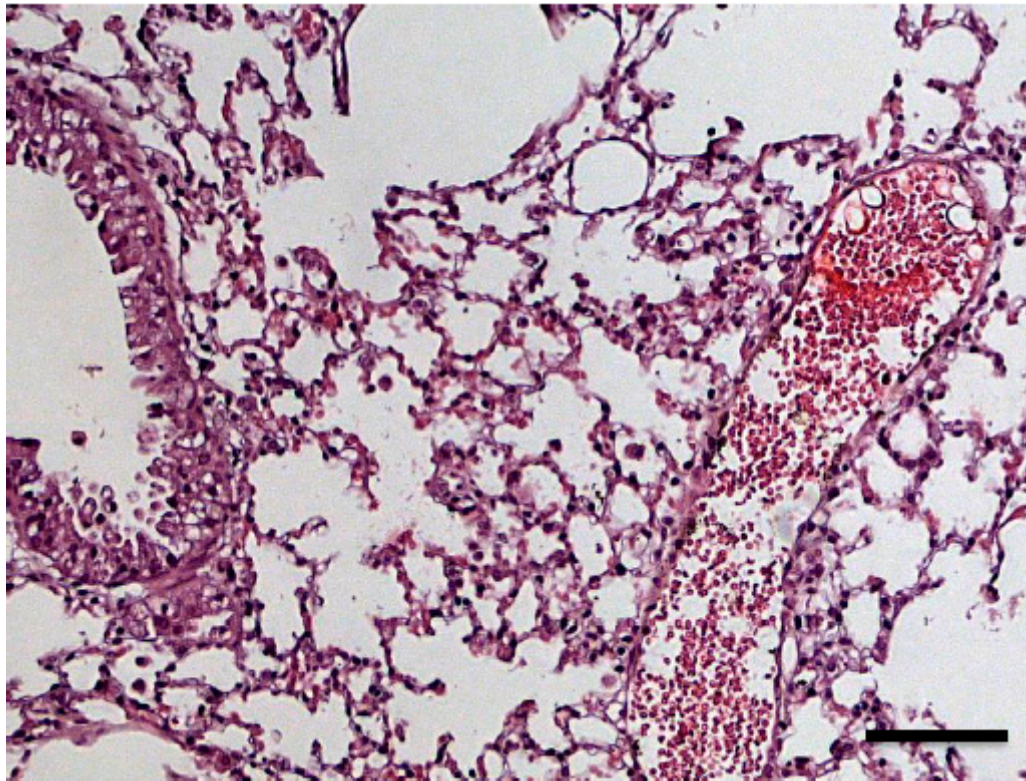


Figure S4. Representative micrograph of mouse lungs (PBS control) 24 h after infection. Standard H&E staining, scale bar = 100 μ m.

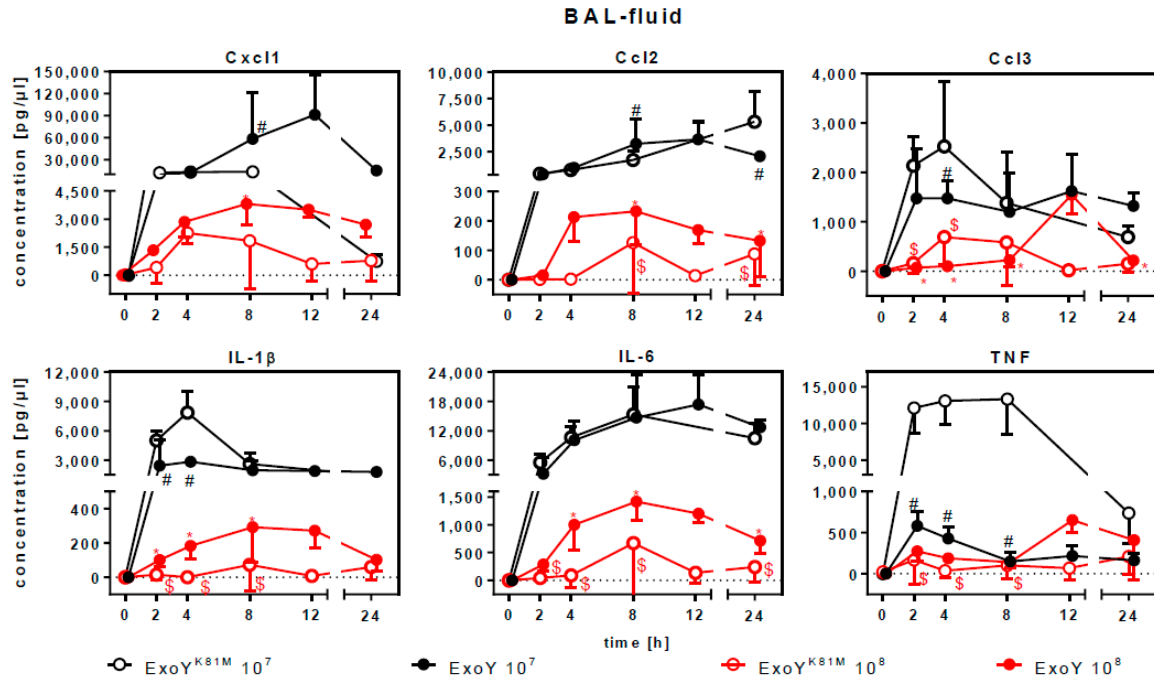


Figure S5. Expression of inflammatory cytokines in BAL-f of mice after infection with ExoY^{K81M} and ExoY. The same data as presented in Fig. 3 are presented here with segmented ordinates in order to allow a better evaluation of the experimental groups infected with 108 cfu. Data represent the mean \pm SD of $n = 6$ animals. Differences between ExoY infection doses (*), between ExoYK81M infection doses (\$), and between ExoY and ExoYK81M of same infection dose (#) were considered significant, when $p \leq 0.05$ (two-way-ANOVA with post-hoc Holm-Sidak correction).

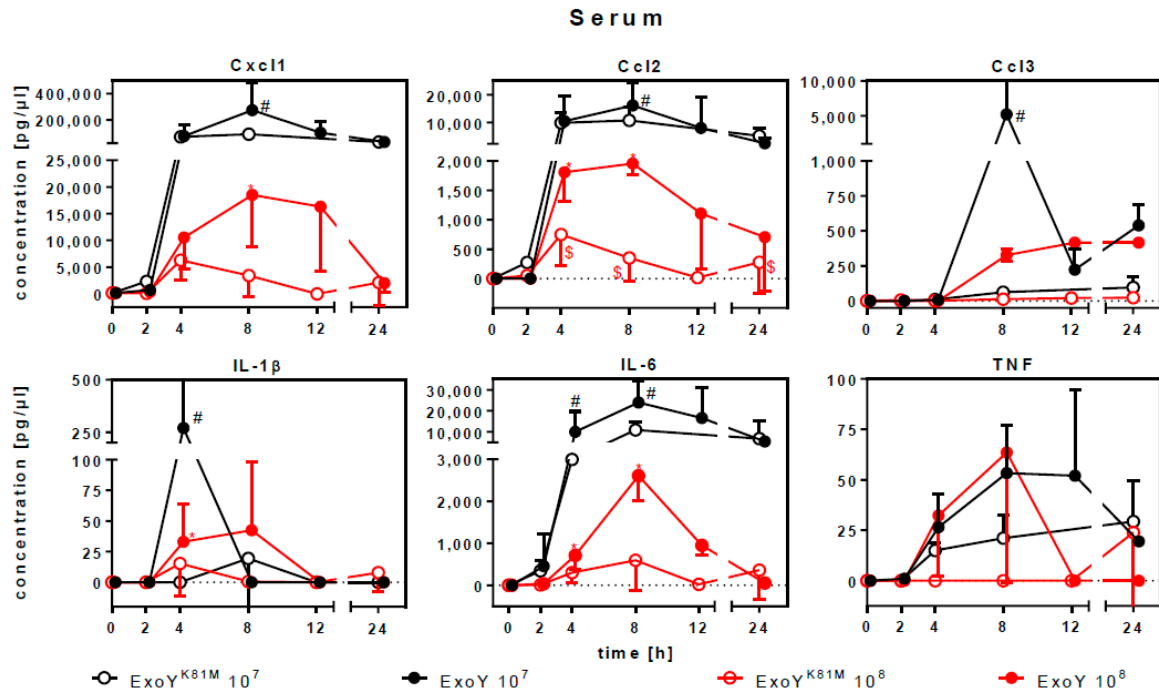


Figure S6. Expression of inflammatory cytokines in BAL-f of mice after infection with ExoY^{K81M} and ExoY. The same data as presented in Fig. 4 are presented here with segmented ordinates in order to allow a better evaluation of the experimental groups infected with 10⁸ cfu. Data represent the mean \pm SD of n = 6 animals. Differences between ExoY infection doses (*), between ExoYK81M infection doses (\$), and between ExoY and ExoYK81M of same infection dose (#) were considered significant, when $p \leq 0.05$ (two-way-ANOVA with post-hoc Holm-Sidak correction).