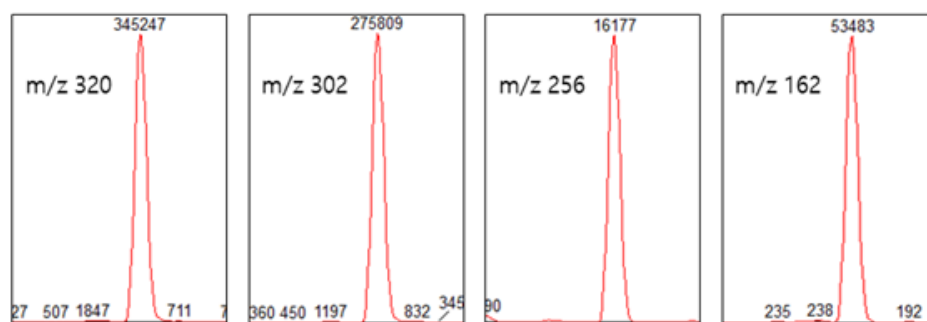
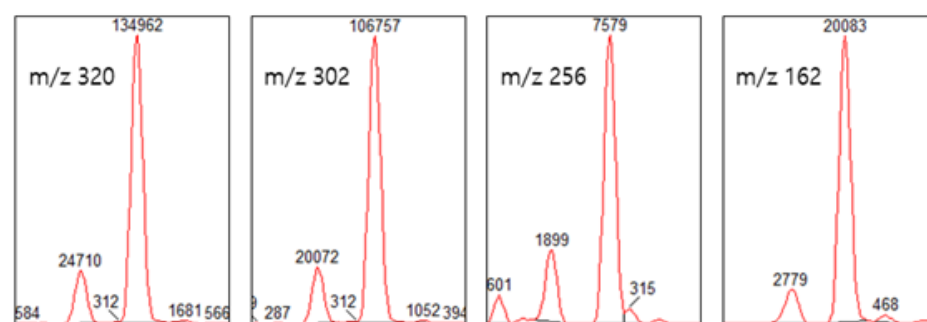


(A) Standard



(B) Sample



<i>m/z</i>	Peak ratio (%)	
	Standard (A)	Sample (B)
320	100	100
302	79.9	82.8
256	4.7	4.4
162	15.5	12.6

Figure S1. The ratio of the peaks in the TTX standard (A) and tissue sample (B). The table represents the ratio of each peak at 320, 302, 256, and 162 *m/z* in the TTX standard (A) and tissue sample (B).