

Figure S1. Markers of proliferation are associated with decreased overall survival in patients with PDAC. **(A)** The expression of *MKI67*, *CCNB1* and *PCNA* in tumoral (T) and non-tumoral (NT) pancreatic tissues from TCGA and GTEx datasets. The red and gray boxes represent PDAC and non-tumoral-derived tissues respectively; (T: n = 179 and NT: n = 171). **(B)** KM plots of Overall survival probability (plotted on Y-axis) of PDAC cancer patients is shown (TCGA data, n = 177). Patients have been stratified into high (red lines) or low (black lines) expression-based ‘risk-groups’ by their gene-expressions of *MKI67*, *CCNB1* and *PCNA*. The patient follow-up is indicated in months on the X-axis. Respective Log-rank test P-value and HR are shown and were calculated at the best auto-selected cut-off.

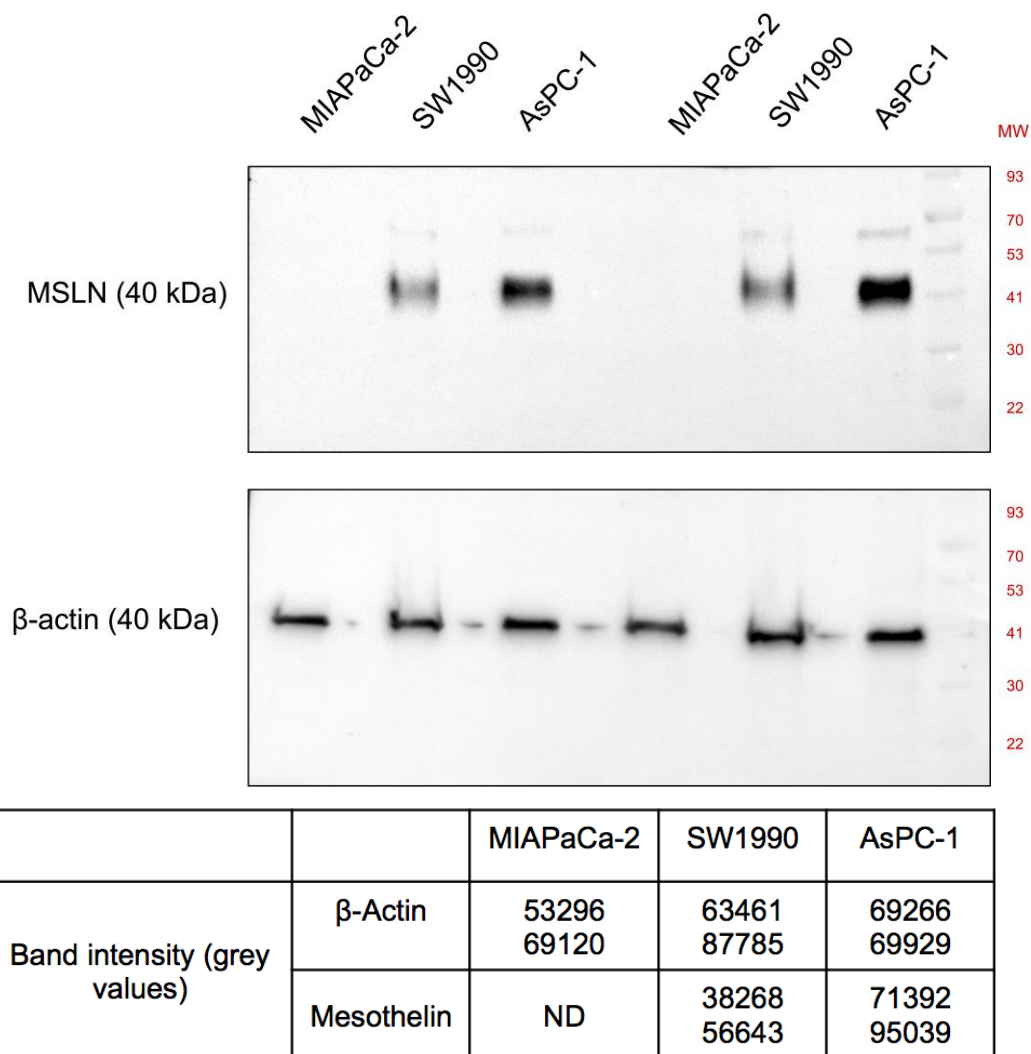


Figure S2. Mesothelin expression of MIAPaCa-2, SW1990 and AsPC-1 was assessed by Western Blot. MW: Molecular Weight. Whole blots pictures depicting mesothelin and β -actin protein levels (n = 2). Grey values of bands are indicated in the table. ND: Not detected.