

Supplementary Materials: Inhibition of DNA repair mechanisms and induction of apoptosis in triple negative breast cancer cells expressing the human herpesvirus 6 U94

F. Caccuri, M. Sommariva, S. Marsico, F. Giordano, A. Zani, A. Giacomini, C. Fraefel, A. Balsari, A. Caruso

Figure 5



Figure S1. Immunoblots of Bcl-2, Bax, Bad, pBad, Cleaved Caspase 3 and Actin protein levels in MDA-MB-231 cells.

Figure 6

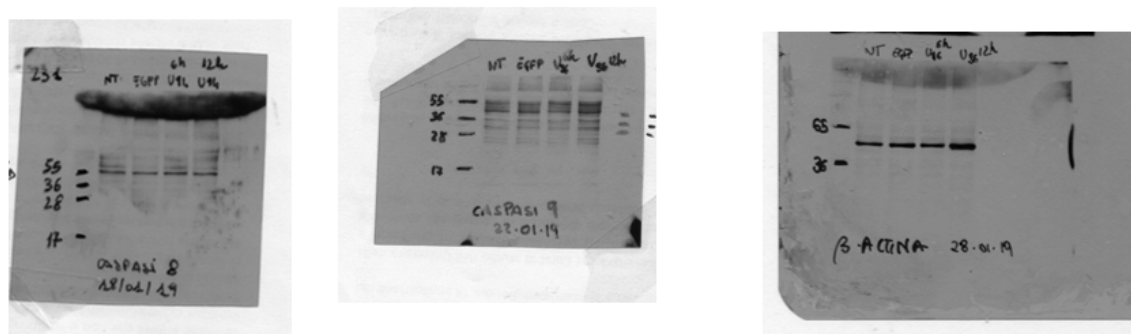


Figure S2. Immunoblots of Caspase 8, Cleaved Caspase 8, Caspase 9, Cleaved Caspase 9 and Actin protein levels in MDA-MB-231 cells.

Figure 7

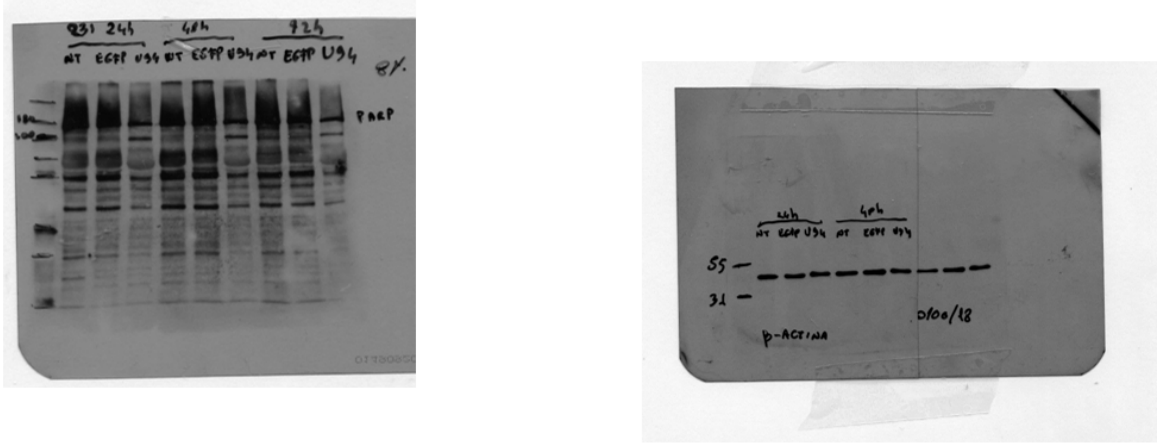


Figure S3. Immunoblots of PARP and Actin protein levels in MDA-MB-231 cells.

Figure 5

Bcl-2					Bax				
NT	EGFP		6h	12h	NT	EGFP		6h	12h
1	0,96110338		0,5084393	0,64792486	1	0,77747511		1,53556489	1,51969333
1	1,03297933		0,68279364	0,50841497	1	0,89144076		1,56392828	1,59370475
1	0,887215		0,6357	0,583212	1	0,832658		1,549299	1,55553

Bad					pBad				
NT	EGFP		6h	12h	NT	EGFP		6h	12h
1	0,77747456		1,53556438	1,51969369	1	0,74358561		0,51276018	0,20581413
1	0,84951617		1,49593165	1,63350633	1	0,75854124		0,49975483	0,29642774
1	0,813166		1,515929	1,576079	1	0,750707		0,506568	0,248961

Cleaved caspase-3					Bcl-2/Bax				
NT	EGFP		6 h	12 h	NT	EGFP		6h	12h
1	1,12034752		1,75899214	2,28696719	1	1,2361854		0,33110896	0,42635237
1	1,5667132		1,46044393	2,52576278	1	1,16877507		0,43658884	0,31901453
1	1,312589		1,630413	2,389812	1	1,0655215		0,4103146	0,37492816

Figure 6

Cleaved caspase-9

NT	EGFP	6h	12h
1	1,04458143	1,10432368	1,79499241
1	0,91997186	0,88487436	1,58680496
1	0,979544	0,989787	1,686333

Figure 7

Cleaved PARP

NT	EGFP	U94	NT	EGFP	U94
1	0,94208614	2,24469569	1	0,86613968	2,30948183
1	1,54408526	2,47501127	1	1,53580134	2,44017187
1	1,230654	2,355097	1	1,178869	2,370514

24h

48h

Figure S4. Densitometry readings/intensity ratio of each band.