

Supplementary Materials

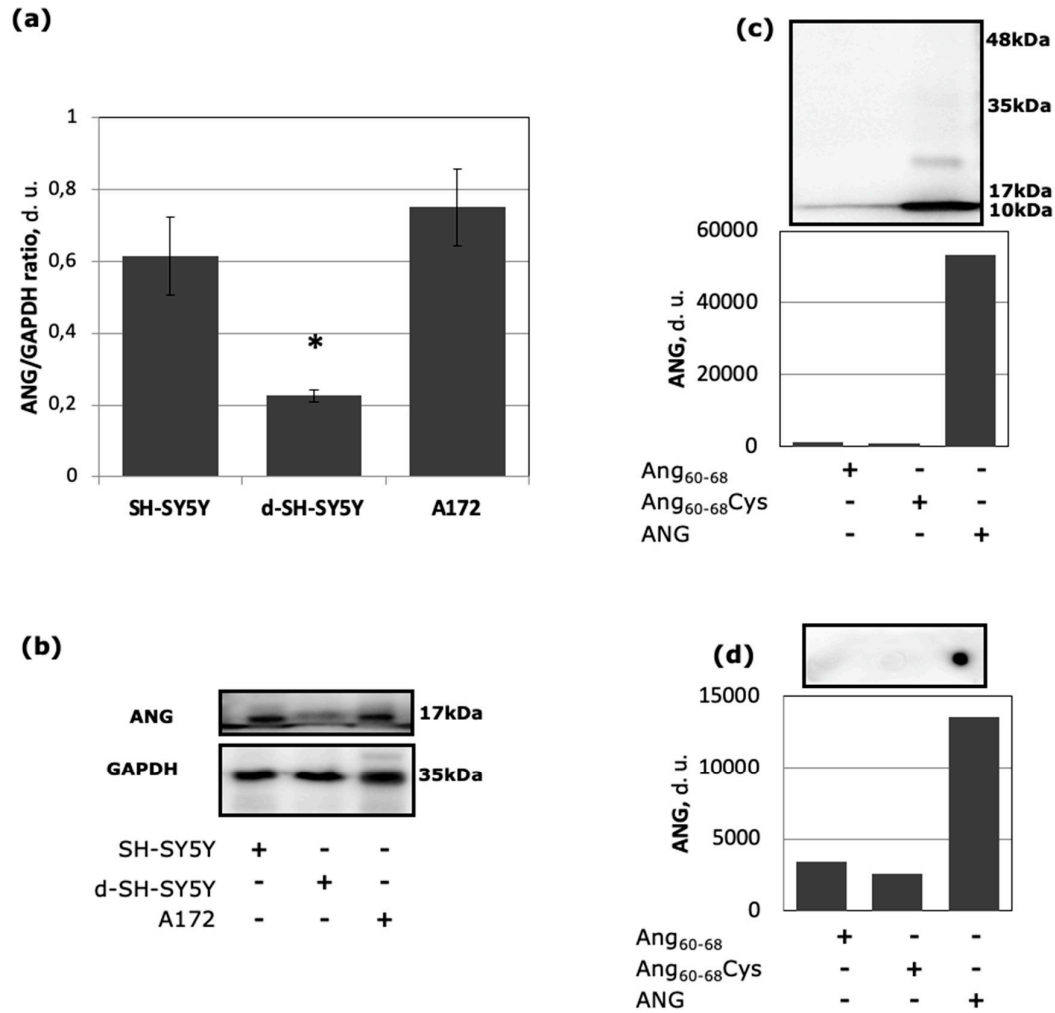


Figure S1. Densitometric analyses (a) and representative Western blot (b) of SH-SY5Y, differentiated SH-SY5Y and A172 cell lysates. Representative Western (c) and dot (d) blotting of Ang₆₀₋₆₈, Ang₆₀₋₆₈Cys and ANG. Nitrocellulose membranes were incubated with anti-angiogenin antibody. Each dot for Dot Blot analysis was loaded with 2 μ L of protein or peptide samples with concentration 0.2 mg/mL. The bars represent means \pm SD of three independent experiments performed in triplicate (S.D. = standard deviation). Statistically significant differences, determined by one-way ANOVA are indicated: * $p \leq 0.05$ versus both, undifferentiated SH-SY5Y and A172 cells.