




Review

# A Bird's-Eye View of Cell Sources for Cell-Based Therapies in Blood Cancers

Benjamin Motais <sup>1,2</sup> , Sandra Charvátová <sup>1,2</sup> , Matouš Hrdinka <sup>1,3</sup> , Michal Šimíček <sup>1,2,3</sup>,  
Tomáš Jelínek <sup>1,2,3</sup>, Tereza Ševčíková <sup>1,2,3</sup>, Zdeněk Kořístek <sup>1,3</sup>, Roman Hájek <sup>1,3</sup> and  
Juli R. Bagó <sup>1,3,\*</sup>

<sup>1</sup> Faculty of Medicine, University of Ostrava, 703 00 Ostrava, Czech Republic; benjamin.motais@fno.cz (B.M.); sandra.charvatova@fno.cz (S.C.); matous.hrdinka@fno.cz (M.H.); michal.simicek@fno.cz (M.Š.); tomas.jelinek@fno.cz (T.J.); tereza.sevcikova@fno.cz (T.Š.); zdenek.koristek@fno.cz (Z.K.); roman.hajek@fno.cz (R.H.)

<sup>2</sup> Faculty of Science, University of Ostrava, 701 03 Ostrava, Czech Republic

<sup>3</sup> Department of Haematology, University Hospital Ostrava, 708 52 Ostrava, Czech Republic

\* Correspondence: julio.rodriquez.bago@fno.cz; Tel.: +420-597-372-092

Received: 14 April 2020; Accepted: 20 May 2020; Published: 23 May 2020



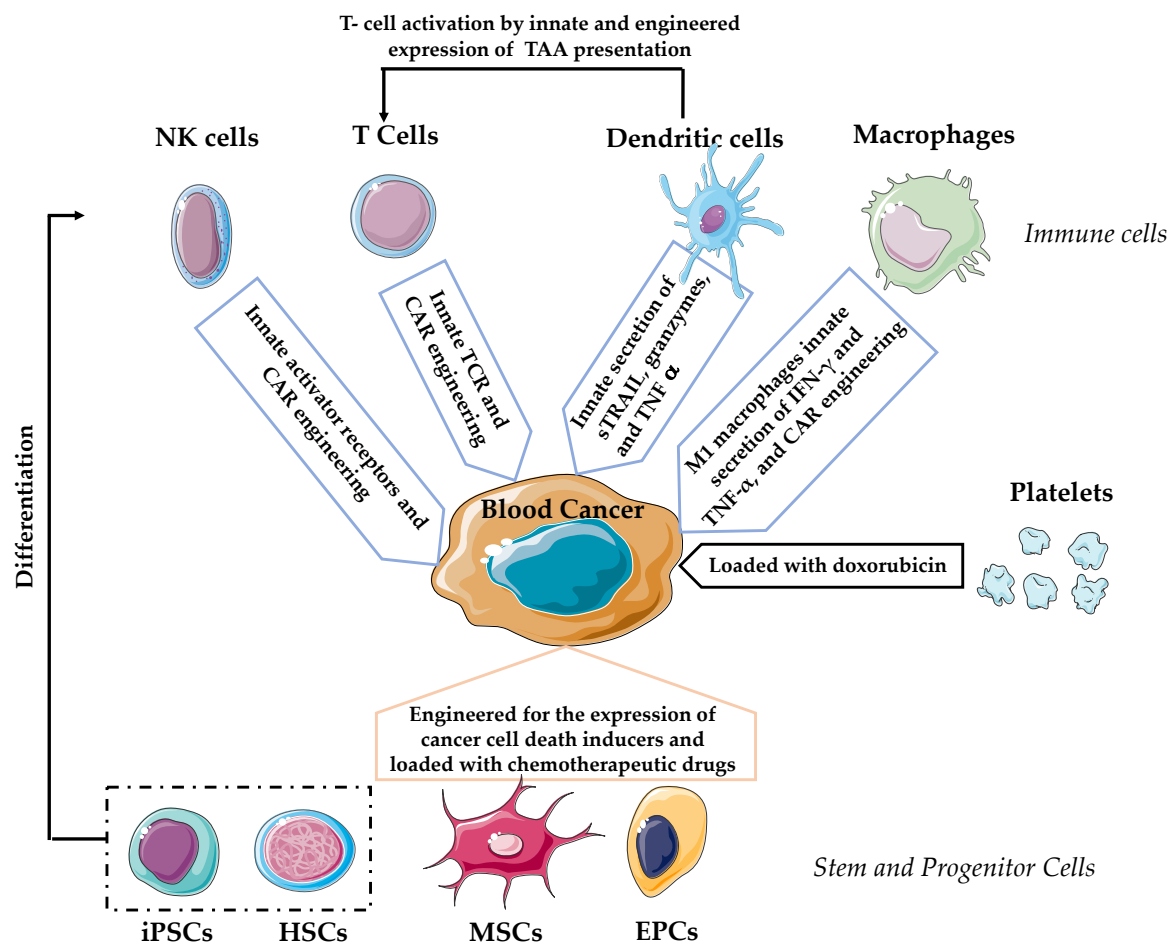
**Abstract:** Hematological malignancies comprise over a hundred different types of cancers and account for around 6.5% of all cancers. Despite the significant improvements in diagnosis and treatment, many of those cancers remain incurable. In recent years, cancer cell-based therapy has become a promising approach to treat those incurable hematological malignancies with striking results in different clinical trials. The most investigated, and the one that has advanced the most, is the cell-based therapy with T lymphocytes modified with chimeric antigen receptors. Those promising initial results prepared the ground to explore other cell-based therapies to treat patients with blood cancer. In this review, we want to provide an overview of the different types of cell-based therapies in blood cancer, describing them according to the cell source.

**Keywords:** cell-based therapy; blood cancer; CAR-T cells; NK cells; dendritic cells; platelets; macrophages; iPSC; stem cells

## 1. Introduction

Hematologic malignancies are the fourth-most common type of cancer, with a higher incidence in older adults [1]. The number of cases is expected to rise over the years because of the increase in life expectancy [2]. Traditionally, the treatment regimens have included chemo and radiotherapy and stem cell transplantation. In the past decade, substantial improvements in patients' outcomes have been achieved through advances in diagnosis and treatment. Some of those new therapeutic approaches include the administration of monoclonal antibodies [3–7] and immunomodulatory drugs [8]. Unfortunately, some types of blood cancers remain incurable. In a rapid-fire series of breakthroughs in recent years, cancer cell-based therapy is flourishing as a novel and promising approach to combat otherwise incurable hematologic malignancies [9–11]. The cancer patients undergoing such cell-based therapies are administered a “living drug” in the form of modified or unmodified living cells from the patient or a suitable donor, which are able to specifically recognize and destroy malignant cells. In practical clinical development, cell-based therapies with T lymphocytes modified with chimeric antigen receptors (CARs) have advanced the most, with striking results in the treatment of different types of hematological cancers [12,13]. In this review, we aim to give an overview of the different types of cancer cell-based therapies to treat hematological malignancies (Figure 1),

organizing them according to the cell type and source used as a therapeutic vehicle and highlighting their main benefits and remaining challenges.



**Figure 1.** Diagram depicting the different cell-based therapies to treat hematological malignancies with the mode of action in each case. NK: natural killer, iPSCs: induced pluripotent stem cells, HSCs: hematopoietic stem cells, MSCs: mesenchymal stem cells, and EPCs: endothelial progenitor cells.

## 2. T Lymphocytes

T cells are apparent candidates for cancer cell-based immunotherapy due to their inherent activity against cancer. T lymphocytes kill tumor cells upon T cell receptor (TCR) recognition of cancer-specific antigens presented by the major histocompatibility complex (MHC). When activated by an antigen, the intracellular domains of CD3ζ in the TCR complex become phosphorylated on their immunoreceptor tyrosine-based activation motifs and triggers a signaling cascade resulting in the expression of transcription factors such as AP-1, NF-κB, or NFAT. In this activated state, the T cells express and release cytolytic enzymes such as granzymes and perforins, thus inducing apoptosis in the target tumor cells. Harnessing the natural recognition of cancer antigens, immunotherapies based on activated T cell transplantation have shown positive results in the past [14].

More recently, the introduction of novel T cell therapies based on CAR-T technology has genuinely revolutionized the battle against cancer, particularly in hematological malignancies. This technology was first described by Gross and colleagues at the Weizmann Institute of Science in Israel in the 1980s [15]. With the CAR approach, immune T cells are armed with artificial receptors that directly recognize specific epitopes present on the surface of tumors cells, bypassing the need for the classical antigen presentation process. The CARs typically consist of an extracellular antibody-derived single-chain variable fragment (scFv) that recognizes specific tumor-related antigens, a single transmembrane

domain, and an intracellular signal domain responsible for triggering the cellular immune responses [16]. Over the years, several generations of CARs have been engineered in order to improve the efficacy of CAR-T cells. The first CAR generation consists of a single intracellular signaling domain of CD3 $\zeta$  derived from the natural TCR complex. With the intention to boost the T cell response after antigen recognition, an addition of one or two costimulatory domains, such as signaling domains CD28 [17] and 4-1BB [18], were added to the first generation of CAR, leading to the second (one additional domain) and third (two additional domains) generations of CARs. The fourth generation of CARs, also referred to as “TRUCKs” (T cells Redirected for Universal Cytokine-mediated Killing), enables the expression of immune-stimulatory cytokines, such as IL-2, to enhance CAR-T cell persistence, expansion, and resistance to immunosuppression [19]. Over the years, rapid advances in genetic engineering have allowed the creation of more sophisticated CAR-T designs to be tested. For example, dual-target CAR-T cells have been developed to provide T-cells with two different scFvs, increasing the killing efficiency and reducing tumor escape in heterogeneous tumors [20]. Furthermore, the efforts to produce more flexible and modulated CAR-T cells in terms of antigen specificity and activity has resulted in the generation of SUPRA (Split Universal Programmable) CARs. The intracellular parts of SUPRA CARs are based on traditional signaling domains, but instead of an extracellular antigen-binding scFv, they display a high-affinity binding domain of leucine zippers [21]. The fully functional CAR is then formed when leucine zippers in the cell membrane match other leucine zippers attached to a specific soluble scFv. This elegant solution simultaneously addressed both the regulation of CAR specificity (targeting various antigens) and activity (creating an active CAR on demand). Other varieties of switchable CARs have been proposed, such as the one with the biotin-avidin system [22]. Those and other switchable designs are flexible systems, allowing an easy and quick reprogram of the CAR, expanding the possible applications and targets and reducing the cost of CAR-T manufacturing. To sum up, T cells can be armed with many viable CAR options, all of which possess unique advantages and disadvantages that will be further defined in the following preclinical and clinical studies.

In most of the cases, before treatment with CAR-T cells, patients with hematological cancers receive lymphodepleting chemotherapy, which permits an appropriate immune environment for the CAR-T cell transfer, improving their *in vivo* function, progression, and persistence [23].

As of 2019, according to the CARGlobalTrials online database [24], there are a total of 353 CAR-T cell clinical trials involving 16,232 patients with hematological cancers, with 52% trials in phase I. So far, two anti-CD19 CAR-T products, Kymriah (Novartis) and Yescarta (Gilead), have received marketing authorization from the US Food and Drug Administration and the European Medicine Agency. Kymriah is indicated for the treatment of young adults and pediatric patients with refractory or relapsed acute lymphoblastic leukemia (ALL), whereas Yescarta is for the treatment of large B cell lymphoma in adult patients. Kymriah was the very first CAR-T product approved, after a successful phase I trial with the second generation of CAR (with 4-1BB as a costimulatory domain) targeting CD19. Out of the 30 patients tested with B- and T-cell ALL, 19 had a sustained complete remission and successfully recovered from cytokine release syndromes triggered by therapy [25]. A second-phase clinical trial is currently being performed in 101 patients with non-Hodgkin’s lymphoma (NHL), and thus far, 54% of patients are showing a complete remission [26]. Many other clinical trials are ongoing, most of them against CD19 and others targeting BCMA (B-cell maturation antigen) [27], CD20 [28], CD22 [29], CD30 [30], or LeY [31].

The engineering of T cells to express the CAR transgene is mainly accomplished using lentiviral [32] and retroviral vectors [33]. However, due to safety concerns inherent to lentiviral transduction [34], nonviral delivery vectors are being intensively studied. Nonviral delivery systems, such as the transposition method with Sleeping Beauty [35] and PiggyBac [36] or based on CRISPR-Cas9 technology [37], have already proved to achieve a stable integration and expression of CAR in T cells.

New studies point out the importance of the T cell ratio between cytotoxic CD8<sup>+</sup> T cells and helper CD4<sup>+</sup> T cells [38] and a subset selection of those T cells depending on their state of differentiation [39–41]

to achieve efficacy in CAR-T cell immunotherapy. Recent clinical trials, such as JCAR017 from JUNO Therapeutics [42], are delivering a particular ratio of CD4+ and CD8+ CAR-T cells to reduce T cell malfunction and apoptosis.

While CAR-T cells are a huge step towards a cancer cure, they are not without drawbacks. One major concern is the manufacturing costs of autologous T cells for each patient, resulting in expensive treatment. The overall costs could be reduced by using an allogeneic T cell source, which is, however, burdened with life-threatening complications such as Graft-versus-host-disease (GvHD), as well as graft rejection by the host immune system. GvHD occurs when infused T cells from a donor get activated via TCR after recognizing the human leukocyte antigen (HLA) mismatch from the patient, resulting in donor T cells attacking the healthy patient's tissues. Graft rejection is caused by the patient's immune system, which attacks donor T cells after recognizing the HLA mismatch. To circumvent these problems and open the way to the use of allogenic T cells, new lines of research aimed at the generation of universal, off-the-shelf T cells with missing TCR and HLA molecules to avoid GvHD and graft rejection, respectively [43]. Another shortcoming of CAR-T cell therapy is the toxicity linked to the application of CAR-T cells. The side effects observed are neurologic toxicity, cytokine release syndrome, "on-target/off-tumor" recognition, and anaphylaxis [44]. These symptoms usually appear in clinical trials at different grades and may cause minor-to-severe side effects. To mitigate those undesired secondary effects, researchers have designed different strategies to eliminate or control CAR-T cell activity in case of severe toxicity [45]. These strategies include the expression of inducible suicide genes such as the Herpes simplex virus thymidine kinase [46] and caspase 9 [47], the expression of CD20 [48] and the epidermal growth factor receptor [49] to mediate a suicide switch with antibodies, CAR activation that requires the recognition of two different tumor antigens [50], the expression of a synthetic Notch that regulates the transcription of the CAR [51], the expression of immune inhibitory receptors [52], and on-switch CARs activated by a small molecule [53]. The most employed so far in clinical trials to treat hematological malignancies has been the suicide switch with antibodies, with a significant impact on the control of the undesired side effects. The major downside of that approach is the possible injury to healthy tissues that express the same antigen as the one recognized by the antibody. In consequence, this may restrict its future development, facilitating its substitution by the other approaches, where the damage to healthy cells is avoided.

### 3. Natural Killer (NK) Cells

Cancer immunotherapy based on NK cells has gradually risen over the past few years as an attractive and promising alternative to CAR-T cell therapy. The unique biological characteristics of NK cells allow us to circumvent two main limitations observed in the CAR-T cells. First, the tumor cells escape from T cell surveillance. The full immune response against cancer cells exerted by T cells relies on MHC-I recognition. Unfortunately, tumors have a propensity to downregulate MHC-I, leading to the escape of T cell antitumor actions [54]. In contrast to T cells, NK cells can exhibit a direct cytotoxic effect against tumor tissues lacking the expression of MHC-I [55]. NK cells express different activating and inhibitory receptors that, upon binding to specific ligands, govern the cytotoxic response. Some examples of activating receptors expressed by NK cells are Nkp46, NK1.1, NKG2D, CD16, and CD244. NK cell inhibitory receptors fall into two groups: the monomeric type I glycoproteins of the immunoglobulin superfamily and the type II glycoproteins with a C-type lectin-like scaffold. Examples of type I are killer cell immunoglobulin-like receptors and leukocyte immunoglobulin-like receptors that recognize specific MHC-I molecules. Second, as the function of NK cells relies on the balance of signals from inhibitory and activating receptors that recognize a specific pattern of ligands in healthy cells and diseased ones, the infusion of allogeneic NK cells is safe and does not cause unwanted and deleterious GvHD [56], thus laying the foundation for the development of another universal, off-the-shelf cancer cell-based immunotherapy.

Different cell sources have been proposed for NK cell-based cancer therapy. Interestingly, one approach utilizes established NK cell lines, such as the NK-92 cell line, obtained from a patient with

clonal NK cell lymphoma. The main advantage is that the NK-92 cell line can be very easily expanded in vitro and retains high antitumor activity [57]. This high activity is due to a consequence of their unique expression profile of receptors, with few inhibitory receptors and a relatively large amount of activating receptors [58]. A significant disadvantage, however, is the need to irradiate the therapeutic cells before the infusion to completely abrogate their proliferation, reducing, in consequence, the in vivo persistence of the effector cells.

Traditionally, NK cells are obtained from donor peripheral blood mononuclear cells [59] and umbilical cord blood [60] but, also, from stem cell sources, such as umbilical cord blood hematopoietic stem cells [61] and human pluripotent stem cells [62]. Each cell source has its inherent advantages and disadvantages, and more preclinical studies will be needed to untangle what the best source of NK cells is.

Similar to T cell-based therapies, NK cells have been armed with different CARs to boost their antitumor efficacy. The CAR structure is analogous to CARs used in T cells. In some cases, however, the signaling domain is slightly modified to be more adaptive to the characteristics of NK cells [63]. Several preclinical studies have already demonstrated the feasibility and benefits of CAR-NK technology. For example, the NK-92 cell line expressing an anti-CD138 CAR [64] showed a significantly enhanced cytotoxicity when compared to control NK-92 cells. In vivo experiments highlighted a significant reduction of the multiple myeloma (MM) tumor volume and increased the survival rate in xenograft mice models treated with anti-CD138 CAR NK-92 cells.

In 2019, the CARGlobalTrials database registered 11 clinical trials utilizing CAR-NK cells, with 174 patients enrolled. To date, only two studies have disclosed their results. The first disclosed phase I clinical trial was performed in three patients with acute myeloid leukemia (AML) with an infusion of NK-92 cells targeting CD33+ tumor cells [65]. The transplanted NK 92 cells did not produce any adverse effects on patients but also did not demonstrate any clinical efficacy. The second disclosed phase I/IIa clinical trial was conducted at the University of Texas MD Anderson Cancer Center and used CD19 CAR-NK cells derived from cord blood to treat 11 patients with relapsed or refractory NHL and chronic lymphocytic leukemia (CLL) [66]. In this case, the study revealed a favorable clinical outcome, with a 73% response rate without significant toxicities.

Overall, CAR-NK cells have demonstrated a great potential to overcome CAR-T cell limitations. However, the CAR-NK cell approach is a recent concept and, therefore, needs to be further improved to surpass its challenges. One of them is the resilience of the NK cells to be genetically engineered by viral and conventional nonviral gene-editing techniques [67]. The use of the endogenous baboon virus was recently found to significantly increase the transduction efficiency of NK cells as compared to VSV-G or RD114 pseudotyped lentiviruses [68]. Electroporation or use of cationic polymers on NK cells have also shown some limitations, even though optimized protocols have been published [69,70].

#### 4. Dendritic Cells (DCs)

In 1973, DCs were discovered in mice by Ralph M. Steinman [71], who also elucidated their essential role in adaptive immunity. For his discoveries, he was awarded the Nobel Prize in Physiology or Medicine in 2011. DCs are part of the innate immune system and play a key role in antigen presentation. DCs have no direct killing activity against cancer cells but can present tumor-associated antigens (TAAs) to naïve T cells, leading to their activation. They can also activate other immune cells, such as NK cells. Therefore, the infusion of dendritic cells, called DC vaccines, has been proposed as a way of immune system reactivation in cancer patients by overcoming endogenous DC malfunctions [72,73] and, in turn, enhancing T cell responses against tumor cells.

Several clinical trials employing different approaches have been performed with DCs to treat patients with hematological cancers. In one approach, DCs were loaded in vitro with specific TAAs, applying diverse methods such as incubation with peptides derived from tumors [74]; tumor apoptotic bodies [75]; or whole tumor cells (lysed, heat-killed, or irradiated) [76]. Other teams directly engineered the DCs to express specific antigens [77] or even used DCs derived from leukemia patients naturally



displaying TAAs on their surface [78]. Another approach selected a specific subset of cytotoxic DCs (killer DCs), which show the particularity to secrete cytotoxic molecules such as soluble TNF-related apoptosis-inducing ligand (sTRAIL), granzymes, or TNF- $\alpha$  [79]. The majority of these clinical trials reported safety, with mild side effects and an overall survival advantage.

Since DCs represent less than 1% of peripheral blood mononuclear cells, obtaining therapeutically meaningful numbers for vaccination purposes is one of the main problems. This problem can be bypassed by an allogeneic source of DCs, as they do not cause GvHD, or, alternatively, by the ex-vivo differentiation of CD14<sup>+</sup> monocytes to DCs [80].

Overall, DC vaccines hold potential in blood cancer cell therapy, as the preclinical and clinical results are promising. Nevertheless, this field is still in its infancy, and more studies need to be carried out to improve the efficacy and elucidate the exact working mechanisms.

## 5. Macrophages

Macrophages are a type of specialized innate immune cells implicated in the detection, phagocytosis, and elimination of cellular debris, pathogens, and cancer cells. They are also involved in antigen presentation to T cells.

The commencement of macrophage-based therapy in cancer can be traced back to the work of Dr. Isaiah Fidler, who used macrophages previously cultured in vitro with conditioned media from B16 tumor cells (mouse melanoma cells) and sensitized lymphocytes. Such stimulated macrophages were then infused in mice with subcutaneous B16 tumors and achieved a significant reduction in pulmonary metastases [81]. From 1987 to 2010, autologous macrophages were employed in clinical trials to treat different types of solid tumors, with nonserious side effects in various dose-escalation regimens but with moderate therapeutic efficacy and no long-term remissions [82]. Monocytes from peripheral blood were the cell source in most of the cases. Once isolated, they were expanded ex vivo and differentiated to the cytotoxic phenotype (M1 macrophages) with 100–1000 U/mL human interferon-gamma (IFN- $\gamma$ ) before infusion [83].

Today, we have better understanding of the biodistribution and mechanism of action of macrophages. Two main reasons could be used to explain its failure in clinical trials, the tissue distribution of infused macrophages being the first. The tissue distribution of labeled macrophages with <sup>111</sup>indium after intravenous infusion in patients with renal carcinoma shows infiltration in the lungs, liver, and spleen but with a lack of trafficking into the tumor [84]. The second is the tumor microenvironment's capacity to polarize M1 macrophages towards an M2 macrophage's phenotype, which is related to wound healing and tissue repair, thus boosting the tumor's malignancy [85,86].

Recent preclinical studies have been focused on surpassing those pitfalls and increasing the macrophages' efficacy as effector cells by genetic modifications [87–89] or by loading them with anticancer drugs or nanoparticles for photothermal therapies [90].

To date, no clinical trials with macrophages have been performed in hematological malignancies, and only a few preclinical studies have been reported. One of those preclinical approaches engineered macrophages to express a new type of CAR that activates their phagocytic mechanism after the recognition of CD19 in Burkitt's lymphoma cell line Raji [91]. This novel CAR has an extracellular scFv that recognizes the antigen CD19 and an intracellular domain composed of Megf10 or FcR $\gamma$  capable of triggering phagocytosis after antigen recognition. The researchers observed that the engineered macrophages cocultured in vitro with the Raji cell line were able to engulf six cancer cells per 100 macrophages, reducing the number of cancer cells by 40%.

The majority of the recent striking trials in blood cancer cell-based therapy have been performed using the immune cells described above and summarized in Table 1.

**Table 1.** Selected cell-based clinical trials with immune cells to treat hematological malignancies featuring key aspects.

Year	Cell Source	Target	Engineering Method	No. of Patients	Age of Patients (Mean)	Dose	Outcomes	Cytotoxic Effects	Additional Notes	Reference
2010	Autologous DCs	ALL	WT1 mRNA electroporation	10	31–83 (61)	4 shots 2 weeks interval 5, 10, or $20 \times 10^6$	2CR	–		[92]
2013	Autologous DCs	CD38+ and CD138+ MM	Fusion with whole MM cell	100	35–70	3–4 shots $2 \times 10^6$ /kg per shot	78% R 47% VGPR 31% CR	–	57 % two-year progression-free survival	[93]
2018	Allogenic DCs	AML	Differentiated from AML cell line	12	57–74 (68)	4 shots 2 weeks interval 10, 25 or $50 \times 10^6$	5 CR 4 PD	–	Post-remission treatment	[94]
2013	Autologous T cells	CD19+ ALL	2nd gen CAR (+CD28)	16	23–74 (50)	One shot $1.5\text{--}3 \times 10^6$ /kg	14 OR 10 CR 13 MRD-	2 CRS4 2 CRS3		[17]
2014	Autologous T cells	CD19+ B-ALL and T-ALL	2nd gen CAR (+4-1BB)	30	5–60	One shot $0.76\text{--}20 \times 10^6$ /kg	27 CR 19 SCR	Severe in 8 patients	FDA approved for ALL and DLBCL Produced by Novartis under the commercial name Kymriah	[25]
2016	Autologous T cells	CD20+ B-cell NHL	2nd gen CAR (+CD137 $\zeta$ )	11	25–70 (59)	One shot $0.5\text{--}1.5 \times 10^6$ /kg	6 CR 3 PR 2 SD	2 CRS3		[28]
2017	Autologous T cells	CD19+ B-cell lymphomas	2nd gen CAR (+CD28)	111	23–76	One shot $2 \times 10^6$ /kg	82% OR 54% CR	95% CRS3+	FDA-approved for B-cell lymphoma Produced by Gilead under the commercial name Yescarta	[95]
2017	Autologous T cells	CD22+ lymphoma and leukemia	2nd gen CAR	21	7–30 (19)	One shot $0.3\text{--}3 \times 10^6$ /kg	12 CR 9 MRD-	1 CRS4 1 CRS3	17 patients were resistant to CAR anti-CD19 in the past	[29]
2019	Autologous T cells	CD19+ and BCMA+ MM	2nd gen CAR	21	49–61 (58)	One shot $1 \times 10^6 + 1 \times 10^6$ /kg	12 CR 8 PR 1 SD 17 MRD-	1CRS3 2 NT		[96]

Table 1. Cont.

Year	Cell Source	Target	Engineering Method	No. of Patients	Age of Patients (Mean)	Dose	Outcomes	Cytotoxic Effects	Additional Notes	Reference
2018	NK92 cell line	CD33+ AML	3rd gen CAR (+CD28 and 4-1BB)	3	14–49	Three shots 2 days interval 300, 600, 1000 $\times 10^6$	No response	2CRS1	One patient died of GvHD after chemotherapy and donor lymphocyte infusion	[65]
2020	Allogenic NK cells from cord blood	CD19+ lymphoma and leukemia	2nd gen CAR (+CD28)	11	23–66 (52)	One shot 0.1, 1 or 10 $\times 10^6$ /kg	8 OR 7 CR	No GvHD No CRS	No GvHD despite some HLA mismatch; Toxic events related to lymphodepletion	[66]

Abbreviations: OR, objective response. CR, complete response. VGPR, very good partial remission. PR, partial response. SD, stable disease. PD, progressive disease. MRD, minimal residual disease negative. SCR, sustained complete response. CRS, cytokine release syndrome (+grade). NT, neurotoxicity. DCs, dendritic cells. MM, multiple myeloma. CARs, chimeric antigen receptors. AML, acute myeloid leukemia. BCMA, B-cell maturation antigen. NK, natural killer. GvHD, graft-versus-host-disease. HLA, human leukocyte antigen. NHL, non-Hodgkin's lymphoma. ALL, acute lymphoblastic leukemia. DLBCL, diffuse large B-cell lymphoma.



## 6. Platelets

Platelets, or thrombocytes, are non-nucleated cell fragments. Their primary function is the formation of clots after blood vessel injury to stop bleeding and to maintain vascular integrity. Harnessing their capacity to adhere to tumor cells [97], platelets have been studied as a vehicle to deliver therapeutic drugs to cancer cells [98]. In a recent preclinical study, platelets were loaded with doxorubicin to deliver the cytotoxic agent to lymphoma cells [99]. The study proved the localized delivery of the drug to the tumor, increasing the therapeutic efficacy and reducing the cardiotoxicity associated with the chemotherapeutic agent.

Platelets are a promising drug delivery vehicle for cancer treatment because of their abundance [100] and their capacity to adhere to cancer cells. However, platelets can be a double-edged sword, as they also play an essential role in the stimulation of tumor dissemination and proliferation by acting on tumor angiogenesis [101], metastasis [102], growth [103], and, in chemotherapy, resistance [104].

## 7. Stem Cells and Progenitor Cells

Stem cells (SCs) are a particular type of cells with a high self-renewal capacity and exceptional ability to differentiate into many specialized cell types. Depending on their differentiation capacity, they can be classified as pluripotent or multipotent. Among the pluripotent SCs, we have the embryonic SCs and the induced pluripotent SCs, with the ability to differentiate into all three germ layers: mesoderm, endoderm, and ectoderm. In the group of multipotent SCs, we have the adult SCs that can be found throughout the body, with a more limited capacity to differentiate to diverse cell types. Examples of adult SCs are the hematopoietic SCs, the mesenchymal SCs, and the endothelial progenitor cells. They play the central role in the homeostasis and regeneration of all body tissues. SCs exhibit inherent tropism for cancer cells, which makes them an ideal therapeutic vehicle in anticancer therapy [105,106] (Table 2).

**Table 2.** Selected cell-based clinical trials and preclinical studies with stem cells to treat hematological malignancies, featuring key aspects. iPSCs: induced pluripotent stem cells, HSCs: hematopoietic stem cells, MSCs: mesenchymal stem cells, GvT: graft versus tumor effect, TRAIL: TNF-related apoptosis-inducing ligand, and NKT: natural killer T cells.

Cell Source	Target	Mode of Action	Outcomes	Reference
HSCs from cord blood	Patients with AML or ALL	GvT	Decrease in leukemic relapse	[107]
MSCs from bone marrow	Mouse models with leukemia cell lines MOLT-4 and L1210	Loaded with paclitaxel	Antileukemia activity in vitro and in the mouse model	[108]
MSCs from adipose tissue	MM cell lines in vitro: RPMI-8226 U-266, MMCA-1, LIG-1, and MCC-2	Engineered with the expression of TRAIL	Antimyeloma activity in vitro	[109]
iPSCs from murine embryonic fibroblasts	Murine T-cell lymphoma	Differentiation to NKT cells	Tumor growth suppression in the mouse model	[110]
iPSCs from murine embryonic fibroblasts	Raji human Burkitt lymphoma cell line	Differentiation to T cells expressing CD19 CAR	Tumor growth inhibition in the mouse model	[111]

### 7.1. Hematopoietic Stem Cells (HSCs)

HSCs are adult multipotent stem cells responsible for generating all the blood cell types in the bone marrow by a process called hematopoiesis. The use of HSCs for cancer treatment is not new. The first successful HSC transplantation was accomplished by Dr. E. Donnall Thomas in 1957 in a

patient with acute leukemia [112]. He received the Nobel Prize in Physiology or Medicine for this groundbreaking work. Nowadays, HSC transplantation is an established treatment for leukemia and other hematological malignancies [113,114], to overcome hematopoietic failure during the high doses of chemotherapy. HSC transplantation can be autologous, allogeneic, or syngeneic, and the cell source can be peripheral blood, bone marrow, or umbilical cord blood [115]. The selection of the source depends on the transplantation indication [116], as well as donor availability. In the allogeneic transplantation of HSCs, the immune cells in the graft can exert an immune response against residual malignant cells, in a process known as the graft versus tumor effect (GvT). An interesting recent approach used the ex vivo gene modification of those HSCs to boost the GvT by the expression of CARs or by the prearranging of the TCR. Thus, the modified HSC population transplanted into the patient can become a long-lasting source of T or NK cells engineered to recognize specific tumor antigens [117]. A recent preclinical study in 2019 has engineered HSC to express NY-ESO-1 TCR. They show how these cells can differentiate into all blood lineages, along with persistence and safety after transplantation to myelo-depleted HLA-A2/K<sup>b</sup> mice. This preclinical study was performed to authorize an investigational new drug application for a clinical trial that is currently being conducted at the University of California, Los Angeles, to treat patients in stage IV or locally advanced unresectable cancers [118]. In the future, this approach could be applied in patients with a hematological cancer, as the NY-ESO-1 TCR can recognize the immunogenic cancer-testis antigen NY-ESO-1 expressed in more than 60% of advanced MM [119].

Whether these new approaches will lead to an increase in efficacy compared to the traditional HSC transplantation remains to be proven in clinical trials. Regardless, the use of genetically modified HSCs is an appealing approach, as it can provide a life-long source of effector immune cells engineered against the specific antigen and can continuously replenish exhausted immune cells.

## 7.2. Mesenchymal Stem Cells (MSCs)

MSCs are multipotent stromal cells that can differentiate to many cell types, such as osteoblasts, chondrocytes, and myocytes [120]. As a consequence of this unique capacity, MSCs have been extensively studied for tissue regeneration purposes [121–124]. More recently, MSCs have been proposed as a vehicle for targeted tumor therapy because of their tumor-tropic properties and relative resistance to chemotherapeutic drugs [125,126]. Tumor cells and tumor microenvironments secrete chemoattractant factors that induce MSC homing [127]. For instance, the expression of CCL25 by MM cells has been proved to attract MSCs after interaction with their receptor CCR9 [128]. The migration capacity of MSCs has also been studied in the context of radiation therapy, increasing their interest as a therapeutic vehicle for cancer treatment. Indeed, Klopp et al. [129] showed that MSCs have a better migration towards irradiated mouse mammary tumor cells (4T1) compared to nonirradiated ones. The migration enhancement after the irradiation of tumor cells was a consequence of the upregulation of cytokines involved in MSC migration, such as VEGF, PDGF-BB, TGF- $\beta$ , and SDF-1. Besides, they observed that MSCs in the presence of irradiated tumor cells upregulated the expression of the chemokine receptor CCR2. Harnessing the tumor-tropic capacity of MSCs, Li et al. [130] and Ciavarella et al. [109] demonstrated the killing capacity of MSC towards leukemia and myeloma cells after engineering them for the expression of human interferon-gamma (IFN- $\gamma$ ) and TRAIL, respectively. Bonomi et al. [131] and Pessina et al. [108] took advantage of the resistance to chemotherapeutic drugs and tumor-tropic properties of MSCs and loaded them with paclitaxel (10,000 ng/mL) to suppress proliferation of the human MM cell line RPMI8226 and the leukemia cell line MOLT-4 in different preclinical studies. This capacity to absorb and release paclitaxel in tumors has also been proved in other chemotherapeutic drugs, such as doxorubicin and gentamicin, with an in vitro inhibition of cell growth on tongue squamous cell carcinoma [132].

Other assets of the MSCs are their relatively easy isolation, expansion, and genetic modification [133]. Besides, they have many possible tissue sources, such as bone marrow; peripheral blood; adipose tissue; or neonatal birth-associated tissues such as the cord blood, umbilical cord, or placenta [134]. The function of MSCs in hematological cancers is less-known than in solid tumors,

but they share the same controversy. Probably because of the heterogeneity in the MSC population, there are studies that claim their antitumor properties [135]; others show the opposite due to evidence that they favor tumor growth [136]. The antitumor effect of MSCs in blood cancers has been reported primarily as a consequence of the suppression in the proliferation of malignant cells by the cell cycle arrest [137–139]. On the other hand, the MSCs have been stated to promote different hematological malignancies by activating metastasis/recurrence [140], suppressing apoptosis [141,142], involvement in the immunomodulation of cancer cells [143,144], supporting tumor vasculature [145], and inducing drug resistance [146,147]. More conclusive and standardized studies need to be performed in this matter before MSCs can be considered as an efficient therapeutic vehicle in hematological malignancies [148].

### 7.3. Endothelial Progenitor Cells (EPCs)

The definition of EPCs is still problematic due to their lack of specific markers. At the moment, they are characterized according to their capacity to differentiate to mature endothelial cells, to proliferate and migrate, and by functional parameters such as the ability to form vessels in vivo and tubular-like structures in vitro [149]. EPCs can be obtained from peripheral blood, bone marrow, cord blood, and other tissues such as adipose tissue [150].

Due to their tumor-homing properties, EPCs have been studied as a vehicle to deliver different therapeutic agents to tumors by the transgene expression of antiangiogenic agents, suicide genes, immune stimulators, or even employed as a virus and nanoparticle carrier to increase the primary therapeutic efficacy [151]. So far, no clinical trials with EPCs as a cancer therapeutic vehicle have been performed. The major hindrances in the translation of EPCs into the clinics are the absence of standardization in isolation and expansion, low numbers of EPCs after isolation [152], the immunogenicity in allogeneic sources, and their inherent protumor proliferation properties [153].

### 7.4. Induced Pluripotent Stem Cells (iPSCs)

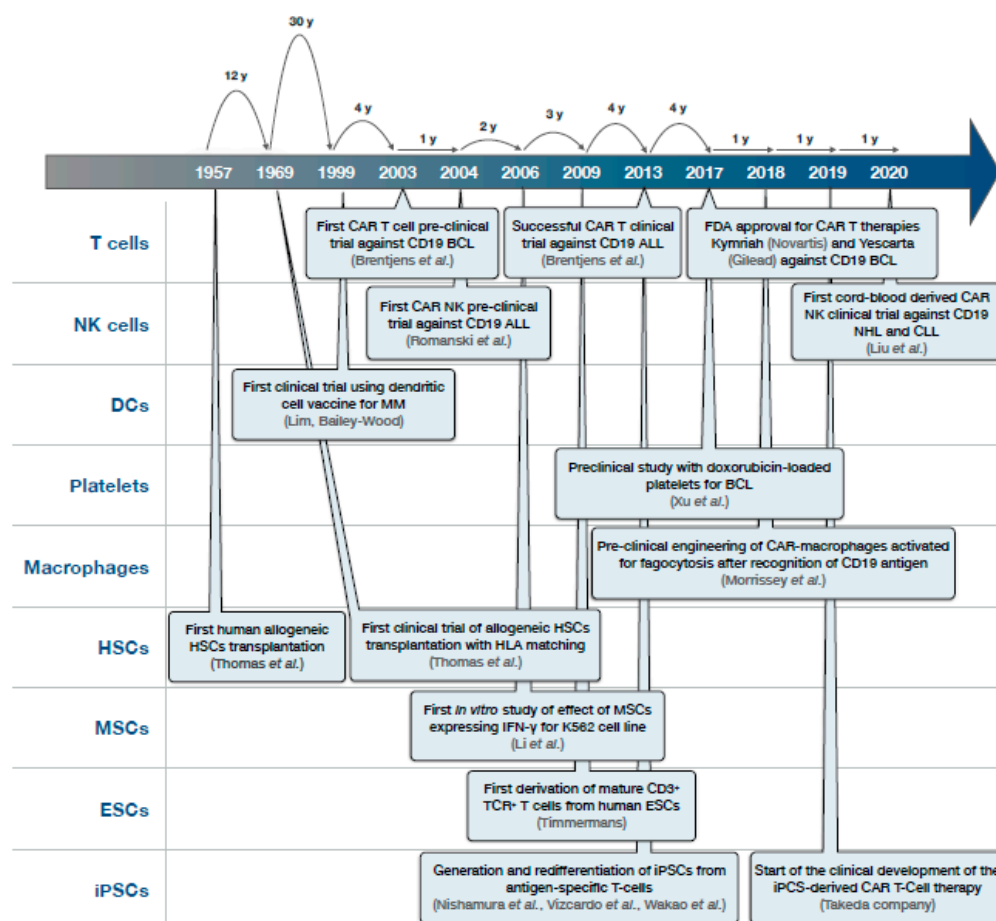
iPSCs are derived from somatic cells by the expression of key transcription factors (Myc, Oct3/4, Sox2, and Klf4). The expression of those transcription factors reprograms the somatic cells into an embryonic-like pluripotent nature that permits the generation of an unlimited source of a specific cell type after the induction of differentiation. This revolutionary discovery was made by Takahashi and Yamanaka in 2006 [154], who were subsequently awarded the Nobel Prize in 2012. iPSCs derived from fibroblasts have been successfully differentiated into functional tumor-targeting T and NK cells. In 2009, Lei et al. [155] were the first to state that the differentiation of iPSCs to T lymphocytes is possible through the coculture of iPSCs (iPS-MEF-Ng-20D-17 cell line) with OP9 stromal cells expressing the Notch ligand Delta-like 1. Transfer of these cells into *Rag*-deficient mice restored T cell pools and generated mature T lymphocytes. A year later, Watari et al. [156] successfully obtained fully functional natural killer T cells (NKT) from iPSCs derived from murine embryonic fibroblasts. These NKT cells derived from iPSCs were able to suppress EG7 (murine T cell lymphoma) tumor growth in vivo in  $\alpha 18^{-/-}$  mice. In 2013, Knorr et al. [110] were able to obtain a large number of cytotoxic NK cells from iPSCs derived from hematopoietic progenitor cells in a feeder-free system. In the same year, Themeli et al. [111] successfully combined iPSCs and CAR technologies to produce human T cells that target CD19 in malignant B cells. A recent publication by Li Zhang et al. [157] obtained functional macrophages of iPSC derived from peripheral blood mononuclear cells. These macrophages were engineered for the expression of CD19 CAR to trigger phagocytosis after tumor antigen recognition in leukemia cell lines Nalm6 and K562. Though some anticancer activity was observed in mouse models of leukemia, the results are not conclusive as a consequence of high variability, requiring further development.

At the moment, the trend is leading towards the development of T and NK cells derived from iPSCs that can be delivered off-the-shelf, simplifying the manufacturing process and reducing the overall costs compared to traditional approaches using autologous cells. A significant drawback in cells derived from iPSCs is the potential risk of teratoma formation due to the activation of pluripotency

genes [158]. In the future, inducible CRISPR-Cas9 technology could be used to permanently turn off or even delete these genes.

## 8. Conclusions

As a consequence of the promising results obtained in the recent clinical trials, cancer cell-based therapy is flourishing as a new pillar in cancer treatment and is likely to become the cornerstone in future blood cancer treatments. However, for the time being, cancer cell-based therapy is a fledgling, and therefore, there is still a long road ahead (Figure 2). To consolidate this novel approach will require more basic and translational research to solve roadblocks such as effector toxicity, persistence, homing, tumor escape, and universal access. A better understanding of the different cell sources available may help to improve the future cell-based therapeutic approaches to treat hematological malignancies by selecting the proper cell type to increase the efficacy and to reduce toxicity and the cost of production. In saying that, a universal effector cell source for different cancers may not exist, and perhaps, it will be required to identify the best cell source for each type of cancer or the best combination of different effector cells to tackle specific cancer cell types.



**Figure 2.** Timeline of cancer cell-based therapy milestones in the past 70 years in blood cancer treatments. ALL: acute lymphoblastic leukemia, BCL: B cell lymphoma, CLL: chronic lymphocytic leukemia, ESCs: embryonic stem cells, NHL: Non-Hodgkin's lymphoma, MM: multiple myeloma.

**Author Contributions:** B.M.; S.C.; J.R.B. wrote the original draft and prepare the figures. M.H.; M.Š.; T.J.; T.Š.; Z.K.; R.H. reviewed and edited the manuscript. All authors have read and agreed to the published version of the manuscript.

**Funding:** This review was funded by the project “Cell Coolab Ostrava—Research and Development Center for Cell Therapy in Hematology and Oncology” (No. CZ.02.1.01/0.0/0.0/17\_049/0008440), New Directions of Biomedical Research in the Ostrava Region (No. CZ.02.1.01/0.0/0.0/18\_069/0010060), and the Institutional Development Plan of University of Ostrava, allocated by The Ministry of Education, Youth and Sports (project no. IRP03\_2018-2020).

**Conflicts of Interest:** The authors declare no conflicts of interest.

## Abbreviations

ALL	Acute lymphoblastic leukemia
AML	Acute myeloid leukemia
AP-1	Activator protein 1
B16	Name of murine melanoma cell line
BCL	B cell lymphoma
BCMA	B-cell maturation antigen
CAR-T	Chimeric antigen receptor T-cell
CARs	Chimeric antigen receptors
Cas9	CRISPR associated protein 9
CCL25	C-C motif chemokine ligand 25
CCR2	C-C motif chemokine receptor 2; cluster of differentiation 192
CCR9	C-C motif chemokine receptor 9
CD137 ζ	Cluster of differentiation 137 ζ
CD138	Syndecan-1; Cluster of differentiation 138
CD14	Cluster of differentiation 14
CD16	Cluster of differentiation 16
CD19	Cluster of differentiation 19
CD20	Cluster of differentiation 20
CD22	Cluster of differentiation 22
CD244	Cluster of differentiation 244
CD28	Cluster of differentiation 28
CD3	Cluster of differentiation 3
CD30	Tumor necrosis factor receptor superfamily member 8; Cluster of differentiation 30
CD33	Cluster of differentiation
CD3ζ	Cluster of differentiation 3ζ
CD4	Cluster of differentiation 4
CD8	Cluster of differentiation 8
CLL	Chronic lymphocytic leukemia
CML	Chronic myelogenous leukemia
CR	Complete response
CRISPR	Clustered regularly interspaced palindromic repeats
CRS	Cytokine release syndrome
DCs	Dendritic cells
DLBCL	Diffuse large B-cell lymphoma
EG7	Name of cell line derived from murine T-cell lymphoma
EGFRt	Epidermal growth factor receptor
EPCs	Endothelial progenitor cells
FcRγ	Fc receptor gamma
FDA	Food and Drug Administration
GvHD	Graft versus host disease
GvT	Graft versus tumor effect
HLA	Human leukocyte antigen
HSCs	Hematopoietic stem cells

IFN- $\gamma$	Human interferon gamma
IL-2	Interleukin 2
iPS-MEF-Ng-20D-17	Name of mouse induced pluripotent stem cell line
iPSCs	Induced pluripotent stem cells
K562	Human erytroleukemic cell line
Klf4	Kruppel-like factor 4
L1210	Name of murine cancer cell line derived from lymphoblasts
LeY	Lewis Y antigen
M1	Macrophage phenotype 1
M2	Macrophage phenotype 2
MDS	Myelodysplastic syndrome
Megf10	Multiple epidermal growth factor-like domains 10
MHC	Major histocompatibility complex
MM	Multiple myeloma
MRD	Minimal residual disease
mRNA	Messenger ribonucleic acid
MSCs	Mesenchymal stem cells
Myc	Master regulator of cell cycle entry and proliferative metabolism
Nalm6	Human B cell precursor leukemia cell line
NF- $\kappa$ B	Nuclear factor kappa-light-chain-enhancer of activated B cells
NFAT	Nuclear factor of activated T-cells
NHL	Non-Hodgkin's lymphoma
NK	Natural killer
NK-92	Name of human NK cell line
NK1.1	NK cell-associated marker 1.1; cluster of differentiation 161
NKG2D	Natural killer group 2D receptor
NKp46	Natural cytotoxicity triggering receptor 1; cluster of differentiation 335
NKT	Natural killer T cells
NT	Neurotoxicity
NY-ESO-1	Cancer-testis antigen
Oct3/4	Octamer-binding transcription factor 4
OP9	Name of murine embryonic cell line
OR	Objective response
PD	Progressive disease
PDGF-BB	Platelet-derived growth factor BB
PR	Partial response
RD114	Name of envelope glycoprotein of lentiviral vectors
RPMI8226	Name of multiple myeloma human cancer cell line derived from B lymphocytes
scFv	Single-chain variable fragment
SCR	Sustained complete response
SCs	Stem cells
SD	Stable disease
SDF-1	Stromal cell derived factor 1
Sox2	Sex determining region Y-box 2
sTRAIL	Soluble TNF-related apoptosis-inducing ligand
SUPRA	Split Universal Programmable
TAA <sub>s</sub>	Tumor-associated antigens
TCR	T cell receptor
TGF- $\beta$	Transforming growth factor $\beta$
TNF- $\alpha$	Tumor necrosis factor alpha
TRAIL	Tumor necrosis factor-related apoptosis-inducing ligand
TRUCK <sub>s</sub>	T cells redirected for universal cytokine-mediated killing
U-266	Name of human cancer cell line derived from B lymphocyte
VEGF	Vascular endothelial growth factor



VGPR	Very good partial remission
VSV-G	Vesicular stomatitis virus G
WT1	Wilms' tumor 1
4T1	Murine mammary tumor cell line

## References

- SEER Cancer Statistics Review (CSR) 1975–2014. Available online: <https://seer.cancer.gov> (accessed on 22 May 2020).
- DeSantis, C.E.; Miller, K.D.; Dale, W.; Mohile, S.G.; Cohen, H.J.; Leach, C.R.; Goding Sauer, A.; Jemal, A.; Siegel, R.L. Cancer statistics for adults aged 85 years and older, 2019. *CA Cancer J. Clin.* **2019**, *69*, 452–467. [[CrossRef](#)] [[PubMed](#)]
- Oostindie, S.C.; van der Horst, H.J.; Kil, L.P.; Strumane, K.; Overdijk, M.B.; van den Brink, E.N.; van den Brakel, J.H.N.; Rademaker, H.J.; van Kessel, B.; van den Noort, J.; et al. DuoHexaBody-CD37((R)), a novel biparatopic CD37 antibody with enhanced Fc-mediated hexamerization as a potential therapy for B-cell malignancies. *Blood Cancer J.* **2020**, *10*, 30. [[CrossRef](#)] [[PubMed](#)]
- Bonello, F.; D'Agostino, M.; Moscvin, M.; Cerrato, C.; Boccadoro, M.; Gay, F. CD38 as an immunotherapeutic target in multiple myeloma. *Expert Opin. Biol. Ther.* **2018**, *18*, 1209–1221. [[CrossRef](#)] [[PubMed](#)]
- Salles, G.; Barrett, M.; Foa, R.; Maurer, J.; O'Brien, S.; Valente, N.; Wenger, M.; Maloney, D.G. Rituximab in B-Cell Hematologic Malignancies: A Review of 20 Years of Clinical Experience. *Adv. Ther.* **2017**, *34*, 2232–2273. [[CrossRef](#)] [[PubMed](#)]
- Gottardi, M.; Mosna, F.; de Angeli, S.; Papayannidis, C.; Candoni, A.; Clavio, M.; Tecchio, C.; Piccin, A.; dell'Orto, M.C.; Benedetti, F.; et al. Clinical and experimental efficacy of gemtuzumab ozogamicin in core binding factor acute myeloid leukemia. *Hematol. Rep.* **2017**, *9*, 7029. [[CrossRef](#)] [[PubMed](#)]
- Abdallah, N.; Kumar, S.K. Daratumumab in untreated newly diagnosed multiple myeloma. *Ther. Adv. Hematol.* **2019**, *10*, 2040620719894871. [[CrossRef](#)] [[PubMed](#)]
- Mori, Y.; Choi, I.; Yoshimoto, G.; Muta, T.; Yamasaki, S.; Tanimoto, K.; Kamimura, T.; Iwasaki, H.; Ogawa, R.; Akashi, K.; et al. Phase I/II study of bortezomib, lenalidomide, and dexamethasone treatment for relapsed and refractory multiple myeloma. *Int. J. Hematol.* **2020**, *111*, 673–680. [[CrossRef](#)]
- Fathi, E.; Farahzadi, R.; Sheervalilou, R.; Sanaat, Z.; Vietor, I. A general view of CD33(+) leukemic stem cells and CAR-T cells as interesting targets in acute myeloblastic leukemia therapy. *Blood Res.* **2020**, *55*, 10–16. [[CrossRef](#)]
- Lee, H.R.; Baek, K.H. Role of natural killer cells for immunotherapy in chronic myeloid leukemia (Review). *Oncol. Rep.* **2019**, *41*, 2625–2635. [[CrossRef](#)]
- Van Acker, H.H.; Versteven, M.; Lichtenegger, F.S.; Roex, G.; Campillo-Davo, D.; Lion, E.; Subklewe, M.; Van Tendeloo, V.F.; Berneman, Z.N.; Anguille, S. Dendritic Cell-Based Immunotherapy of Acute Myeloid Leukemia. *J. Clin. Med.* **2019**, *8*, 579. [[CrossRef](#)]
- Maude, S.L.; Laetsch, T.W.; Buechner, J.; Rives, S.; Boyer, M.; Bittencourt, H.; Bader, P.; Verneris, M.R.; Stefanski, H.E.; Myers, G.D.; et al. Tisagenlecleucel in Children and Young Adults with B-Cell Lymphoblastic Leukemia. *N. Engl. J. Med.* **2018**, *378*, 439–448. [[CrossRef](#)] [[PubMed](#)]
- Song, W.; Zhang, M. Use of CAR-T cell therapy, PD-1 blockade, and their combination for the treatment of hematological malignancies. *Clin. Immunol.* **2020**, *214*, 108382. [[CrossRef](#)] [[PubMed](#)]
- Bollard, C.M.; Gottschalk, S.; Torrano, V.; Diouf, O.; Ku, S.; Hazrat, Y.; Carrum, G.; Ramos, C.; Fayad, L.; Shpall, E.J.; et al. Sustained complete responses in patients with lymphoma receiving autologous cytotoxic T lymphocytes targeting Epstein-Barr virus latent membrane proteins. *J. Clin. Oncol.* **2014**, *32*, 798–808. [[CrossRef](#)] [[PubMed](#)]
- Gross, G.; Waks, T.; Eshhar, Z. Expression of immunoglobulin-T-cell receptor chimeric molecules as functional receptors with antibody-type specificity. *Proc. Natl. Acad. Sci. USA* **1989**, *86*, 10024–10028. [[CrossRef](#)]
- Abate-Daga, D.; Davila, M.L. CAR models: Next-generation CAR modifications for enhanced T-cell function. *Mol. Ther. Oncolytics* **2016**, *3*, 16014. [[CrossRef](#)]
- Davila, M.L.; Riviere, I.; Wang, X.; Bartido, S.; Park, J.; Curran, K.; Chung, S.S.; Stefanski, J.; Borquez-Ojeda, O.; Olszewska, M.; et al. Efficacy and toxicity management of 19-28z CAR T cell therapy in B cell acute lymphoblastic leukemia. *Sci. Transl. Med.* **2014**, *6*, 224ra225. [[CrossRef](#)]

18. Drent, E.; Poels, R.; Ruiter, R.; van de Donk, N.; Zweegman, S.; Yuan, H.; de Bruijn, J.; Sadelain, M.; Lokhorst, H.M.; Groen, R.W.J.; et al. Combined CD28 and 4-1BB Costimulation Potentiates Affinity-tuned Chimeric Antigen Receptor-engineered T Cells. *Clin. Cancer Res.* **2019**, *25*, 4014–4025. [\[CrossRef\]](#)
19. Chmielewski, M.; Abken, H. TRUCKs: The fourth generation of CARs. *Expert Opin. Biol. Ther.* **2015**, *15*, 1145–1154. [\[CrossRef\]](#)
20. Zhao, J.; Song, Y.; Liu, D. Clinical trials of dual-target CAR T cells, donor-derived CAR T cells, and universal CAR T cells for acute lymphoid leukemia. *J. Hematol. Oncol.* **2019**, *12*, 17. [\[CrossRef\]](#)
21. Cho, J.H.; Collins, J.J.; Wong, W.W. Universal Chimeric Antigen Receptors for Multiplexed and Logical Control of T Cell Responses. *Cell* **2018**, *173*, 1426–1438. [\[CrossRef\]](#)
22. Lohmueller, J.J.; Ham, J.D.; Kvorjak, M.; Finn, O.J. mSA2 affinity-enhanced biotin-binding CAR T cells for universal tumor targeting. *Oncoimmunology* **2017**, *7*, e1368604. [\[CrossRef\]](#) [\[PubMed\]](#)
23. Brentjens, R.J.; Riviere, I.; Park, J.H.; Davila, M.L.; Wang, X.; Stefanski, J.; Taylor, C.; Yeh, R.; Bartido, S.; Borquez-Ojeda, O.; et al. Safety and persistence of adoptively transferred autologous CD19-targeted T cells in patients with relapsed or chemotherapy refractory B-cell leukemias. *Blood* **2011**, *118*, 4817–4828. [\[CrossRef\]](#) [\[PubMed\]](#)
24. MacKay, M. CARGlobalTrials. Available online: <https://carglobaltrials.com/> (accessed on 22 May 2020).
25. Maude, S.L.; Frey, N.; Shaw, P.A.; Aplenc, R.; Barrett, D.M.; Bunin, N.J.; Chew, A.; Gonzalez, V.E.; Zheng, Z.; Lacey, S.F.; et al. Chimeric antigen receptor T cells for sustained remissions in leukemia. *N. Engl. J. Med.* **2014**, *371*, 1507–1517. [\[CrossRef\]](#) [\[PubMed\]](#)
26. Vairy, S.; Garcia, J.L.; Teira, P.; Bittencourt, H. CTL019 (tisagenlecleucel): CAR-T therapy for relapsed and refractory B-cell acute lymphoblastic leukemia. *Drug Des. Devel. Ther.* **2018**, *12*, 3885–3898. [\[CrossRef\]](#) [\[PubMed\]](#)
27. Raje, N.; Berdeja, J.; Lin, Y.; Siegel, D.; Jagannath, S.; Madduri, D.; Liedtke, M.; Rosenblatt, J.; Maus, M.V.; Turka, A.; et al. Anti-BCMA CAR T-Cell Therapy bb2121 in Relapsed or Refractory Multiple Myeloma. *N. Engl. J. Med.* **2019**, *380*, 1726–1737. [\[CrossRef\]](#) [\[PubMed\]](#)
28. Zhang, W.Y.; Wang, Y.; Guo, Y.L.; Dai, H.R.; Yang, Q.M.; Zhang, Y.J.; Zhang, Y.; Chen, M.X.; Wang, C.M.; Feng, K.C.; et al. Treatment of CD20-directed Chimeric Antigen Receptor-modified T cells in patients with relapsed or refractory B-cell non-Hodgkin lymphoma: An early phase IIa trial report. *Signal Transduct. Target. Ther.* **2016**, *1*, 16002. [\[CrossRef\]](#)
29. Fry, T.J.; Shah, N.N.; Orentas, R.J.; Stetler-Stevenson, M.; Yuan, C.M.; Ramakrishna, S.; Wolters, P.; Martin, S.; Delbrook, C.; Yates, B.; et al. CD22-targeted CAR T cells induce remission in B-ALL that is naive or resistant to CD19-targeted CAR immunotherapy. *Nat. Med.* **2018**, *24*, 20–28. [\[CrossRef\]](#)
30. Ramos, C.A.; Ballard, B.; Zhang, H.; Dakhova, O.; Gee, A.P.; Mei, Z.; Bilgi, M.; Wu, M.F.; Liu, H.; Grilley, B.; et al. Clinical and immunological responses after CD30-specific chimeric antigen receptor-redirected lymphocytes. *J. Clin. Invest.* **2017**, *127*, 3462–3471. [\[CrossRef\]](#)
31. Ritchie, D.S.; Neeson, P.J.; Khot, A.; Peinert, S.; Tai, T.; Tainton, K.; Chen, K.; Shin, M.; Wall, D.M.; Honemann, D.; et al. Persistence and efficacy of second generation CAR T cell against the LeY antigen in acute myeloid leukemia. *Mol. Ther.* **2013**, *21*, 2122–2129. [\[CrossRef\]](#)
32. Picanco-Castro, V.; Moco, P.D.; Mizukami, A.; Vaz, L.D.; de Souza Fernandes Pereira, M.; Silvestre, R.N.; de Azevedo, J.T.C.; de Sousa Bomfim, A.; de Abreu Neto, M.S.; Malmegrim, K.C.R.; et al. Establishment of a simple and efficient platform for car-t cell generation and expansion: From lentiviral production to in vivo studies. *Hematol. Transfus. Cell Ther.* **2019**. [\[CrossRef\]](#)
33. Pampusch, M.S.; Haran, K.P.; Hart, G.T.; Rakasz, E.G.; Rendahl, A.K.; Berger, E.A.; Connick, E.; Skinner, P.J. Rapid Transduction and Expansion of Transduced T Cells with Maintenance of Central Memory Populations. *Mol. Ther. Methods Clin. Dev.* **2020**, *16*, 1–10. [\[CrossRef\]](#) [\[PubMed\]](#)
34. Schlimgen, R.; Howard, J.; Wooley, D.; Thompson, M.; Baden, L.R.; Yang, O.O.; Christiani, D.C.; Mostoslavsky, G.; Diamond, D.V.; Duane, E.G.; et al. Risks Associated With Lentiviral Vector Exposures and Prevention Strategies. *J. Occup. Environ. Med.* **2016**, *58*, 1159–1166. [\[CrossRef\]](#) [\[PubMed\]](#)
35. Kebriaei, P.; Singh, H.; Huls, M.H.; Figliola, M.J.; Bassett, R.; Olivares, S.; Jena, B.; Dawson, M.J.; Kumaresan, P.R.; Su, S.; et al. Phase I trials using Sleeping Beauty to generate CD19-specific CAR T cells. *J. Clin. Invest.* **2016**, *126*, 3363–3376. [\[CrossRef\]](#) [\[PubMed\]](#)

36. Morita, D.; Nishio, N.; Saito, S.; Tanaka, M.; Kawashima, N.; Okuno, Y.; Suzuki, S.; Matsuda, K.; Maeda, Y.; Wilson, M.H.; et al. Enhanced Expression of Anti-CD19 Chimeric Antigen Receptor in piggyBac Transposon-Engineered T Cells. *Mol. Ther. Methods Clin. Dev.* **2018**, *8*, 131–140. [\[CrossRef\]](#)
37. Eyquem, J.; Mansilla-Soto, J.; Giavridis, T.; van der Stegen, S.J.; Hamieh, M.; Cunanan, K.M.; Odak, A.; Gonen, M.; Sadelain, M. Targeting a CAR to the TRAC locus with CRISPR/Cas9 enhances tumour rejection. *Nature* **2017**, *543*, 113–117. [\[CrossRef\]](#)
38. Janssen, E.M.; Lemmens, E.E.; Wolfe, T.; Christen, U.; von Herrath, M.G.; Schoenberger, S.P. CD4+ T cells are required for secondary expansion and memory in CD8+ T lymphocytes. *Nature* **2003**, *421*, 852–856. [\[CrossRef\]](#)
39. Berger, C.; Jensen, M.C.; Lansdorp, P.M.; Gough, M.; Elliott, C.; Riddell, S.R. Adoptive transfer of effector CD8+ T cells derived from central memory cells establishes persistent T cell memory in primates. *J. Clin. Invest.* **2008**, *118*, 294–305. [\[CrossRef\]](#)
40. Xu, Y.; Zhang, M.; Ramos, C.A.; Durett, A.; Liu, E.; Dakhova, O.; Liu, H.; Creighton, C.J.; Gee, A.P.; Heslop, H.E.; et al. Closely related T-memory stem cells correlate with in vivo expansion of CAR-CD19-T cells and are preserved by IL-7 and IL-15. *Blood* **2014**, *123*, 3750–3759. [\[CrossRef\]](#)
41. Golubovskaya, V.; Wu, L. Different Subsets of T Cells, Memory, Effector Functions, and CAR-T Immunotherapy. *Cancers (Basel)* **2016**, *8*, 36. [\[CrossRef\]](#)
42. Chavez, J.C.; Bachmeier, C.; Kharfan-Dabaja, M.A. CAR T-cell therapy for B-cell lymphomas: Clinical trial results of available products. *Ther. Adv. Hematol.* **2019**, *10*, 2040620719841581. [\[CrossRef\]](#)
43. Depil, S.; Duchateau, P.; Grupp, S.A.; Mufti, G.; Poirot, L. ‘Off-the-shelf’ allogeneic CAR T cells: Development and challenges. *Nat. Rev. Drug Discov.* **2020**, *19*, 185–199. [\[CrossRef\]](#) [\[PubMed\]](#)
44. Bonifant, C.L.; Jackson, H.J.; Brentjens, R.J.; Curran, K.J. Toxicity and management in CAR T-cell therapy. *Mol. Ther. Oncolytics* **2016**, *3*, 16011. [\[CrossRef\]](#) [\[PubMed\]](#)
45. Yu, S.; Yi, M.; Qin, S.; Wu, K. Next generation chimeric antigen receptor T cells: Safety strategies to overcome toxicity. *Mol. Cancer* **2019**, *18*, 125. [\[CrossRef\]](#) [\[PubMed\]](#)
46. Diaconu, I.; Ballard, B.; Zhang, M.; Chen, Y.; West, J.; Dotti, G.; Savoldo, B. Inducible Caspase-9 Selectively Modulates the Toxicities of CD19-Specific Chimeric Antigen Receptor-Modified T Cells. *Mol. Ther.* **2017**, *25*, 580–592. [\[CrossRef\]](#)
47. Gargett, T.; Brown, M.P. The inducible caspase-9 suicide gene system as a “safety switch” to limit on-target, off-tumor toxicities of chimeric antigen receptor T cells. *Front. Pharmacol.* **2014**, *5*, 235. [\[CrossRef\]](#)
48. Griffioen, M.; van Egmond, E.H.; Kester, M.G.; Willemze, R.; Falkenburg, J.H.; Heemskerk, M.H. Retroviral transfer of human CD20 as a suicide gene for adoptive T-cell therapy. *Haematologica* **2009**, *94*, 1316–1320. [\[CrossRef\]](#)
49. Paszkiewicz, P.J.; Frassle, S.P.; Srivastava, S.; Sommermeyer, D.; Hudecek, M.; Drexler, I.; Sadelain, M.; Liu, L.; Jensen, M.C.; Riddell, S.R.; et al. Targeted antibody-mediated depletion of murine CD19 CAR T cells permanently reverses B cell aplasia. *J. Clin. Invest.* **2016**, *126*, 4262–4272. [\[CrossRef\]](#)
50. Grada, Z.; Hegde, M.; Byrd, T.; Shaffer, D.R.; Ghazi, A.; Brawley, V.S.; Corder, A.; Schonfeld, K.; Koch, J.; Dotti, G.; et al. TanCAR: A Novel Bispecific Chimeric Antigen Receptor for Cancer Immunotherapy. *Mol. Ther. Nucleic Acids* **2013**, *2*, e105. [\[CrossRef\]](#)
51. Yuan, X.; Wu, H.; Xu, H.; Xiong, H.; Chu, Q.; Yu, S.; Wu, G.S.; Wu, K. Notch signaling: An emerging therapeutic target for cancer treatment. *Cancer Lett.* **2015**, *369*, 20–27. [\[CrossRef\]](#)
52. Fedorov, V.D.; Themeli, M.; Sadelain, M. PD-1- and CTLA-4-based inhibitory chimeric antigen receptors (iCARs) divert off-target immunotherapy responses. *Sci. Transl. Med.* **2013**, *5*, 215ra172. [\[CrossRef\]](#)
53. Wu, C.Y.; Roybal, K.T.; Puchner, E.M.; Onuffer, J.; Lim, W.A. Remote control of therapeutic T cells through a small molecule-gated chimeric receptor. *Science* **2015**, *350*, aab4077. [\[CrossRef\]](#) [\[PubMed\]](#)
54. Garrido, F.; Perea, F.; Bernal, M.; Sanchez-Palencia, A.; Aptsiauri, N.; Ruiz-Cabello, F. The Escape of Cancer from T Cell-Mediated Immune Surveillance: HLA Class I Loss and Tumor Tissue Architecture. *Vaccines (Basel)* **2017**, *5*, 7. [\[CrossRef\]](#) [\[PubMed\]](#)
55. Paul, S.; Lal, G. The Molecular Mechanism of Natural Killer Cells Function and Its Importance in Cancer Immunotherapy. *Front. Immunol.* **2017**, *8*, 1124. [\[CrossRef\]](#) [\[PubMed\]](#)

56. Jaiswal, S.R.; Zaman, S.; Nedunchezian, M.; Chakrabarti, A.; Bhakuni, P.; Ahmed, M.; Sharma, K.; Rawat, S.; O'Donnell, P.; Chakrabarti, S. CD56-enriched donor cell infusion after post-transplantation cyclophosphamide for haploidentical transplantation of advanced myeloid malignancies is associated with prompt reconstitution of mature natural killer cells and regulatory T cells with reduced incidence of acute graft versus host disease: A pilot study. *Cytotherapy* **2017**, *19*, 531–542. [\[CrossRef\]](#)
57. Williams, B.A.; Law, A.D.; Routy, B.; denHollander, N.; Gupta, V.; Wang, X.H.; Chaboureaud, A.; Viswanathan, S.; Keating, A. A phase I trial of NK-92 cells for refractory hematological malignancies relapsing after autologous hematopoietic cell transplantation shows safety and evidence of efficacy. *Oncotarget* **2017**, *8*, 89256–89268. [\[CrossRef\]](#)
58. Maki, G.; Klingemann, H.G.; Martinson, J.A.; Tam, Y.K. Factors regulating the cytotoxic activity of the human natural killer cell line, NK-92. *J. Hematother. Stem Cell Res.* **2001**, *10*, 369–383. [\[CrossRef\]](#)
59. Masuyama, J.; Murakami, T.; Iwamoto, S.; Fujita, S. Ex vivo expansion of natural killer cells from human peripheral blood mononuclear cells co-stimulated with anti-CD3 and anti-CD52 monoclonal antibodies. *Cytotherapy* **2016**, *18*, 80–90. [\[CrossRef\]](#)
60. Herrera, L.; Santos, S.; Vesga, M.A.; Anguita, J.; Martin-Ruiz, I.; Carrascosa, T.; Juan, M.; Eguizabal, C. Adult peripheral blood and umbilical cord blood NK cells are good sources for effective CAR therapy against CD19 positive leukemic cells. *Sci. Rep.* **2019**, *9*, 18729. [\[CrossRef\]](#)
61. Herrera, L.; Salcedo, J.M.; Santos, S.; Vesga, M.A.; Borrego, F.; Eguizabal, C. OP9 Feeder Cells Are Superior to M2-10B4 Cells for the Generation of Mature and Functional Natural Killer Cells from Umbilical Cord Hematopoietic Progenitors. *Front. Immunol.* **2017**, *8*, 755. [\[CrossRef\]](#)
62. Nianias, A.; Themeli, M. Induced Pluripotent Stem Cell (iPSC)-Derived Lymphocytes for Adoptive Cell Immunotherapy: Recent Advances and Challenges. *Curr. Hematol. Malign. Rep.* **2019**, *14*, 261–268. [\[CrossRef\]](#)
63. Topfer, K.; Cartellieri, M.; Michen, S.; Wiedemuth, R.; Muller, N.; Lindemann, D.; Bachmann, M.; Fussel, M.; Schackert, G.; Temme, A. DAP12-based activating chimeric antigen receptor for NK cell tumor immunotherapy. *J. Immunol.* **2015**, *194*, 3201–3212. [\[CrossRef\]](#) [\[PubMed\]](#)
64. Jiang, H.; Zhang, W.; Shang, P.; Zhang, H.; Fu, W.; Ye, F.; Zeng, T.; Huang, H.; Zhang, X.; Sun, W.; et al. Transfection of chimeric anti-CD138 gene enhances natural killer cell activation and killing of multiple myeloma cells. *Mol. Oncol.* **2014**, *8*, 297–310. [\[CrossRef\]](#) [\[PubMed\]](#)
65. Tang, X.; Yang, L.; Li, Z.; Nalin, A.P.; Dai, H.; Xu, T.; Yin, J.; You, F.; Zhu, M.; Shen, W.; et al. First-in-man clinical trial of CAR NK-92 cells: Safety test of CD33-CAR NK-92 cells in patients with relapsed and refractory acute myeloid leukemia. *Am. J. Cancer Res.* **2018**, *8*, 1083–1089. [\[PubMed\]](#)
66. Liu, E.; Marin, D.; Banerjee, P.; Macapinlac, H.A.; Thompson, P.; Basar, R.; Nassif Kerbaudy, L.; Overman, B.; Thall, P.; Kaplan, M.; et al. Use of CAR-Transduced Natural Killer Cells in CD19-Positive Lymphoid Tumors. *N. Engl. J. Med.* **2020**, *382*, 545–553. [\[CrossRef\]](#) [\[PubMed\]](#)
67. Carlsten, M.; Childs, R.W. Genetic Manipulation of NK Cells for Cancer Immunotherapy: Techniques and Clinical Implications. *Front. Immunol.* **2015**, *6*, 266. [\[CrossRef\]](#)
68. Colamartino, A.B.L.; Lemieux, W.; Bifsha, P.; Nicoletti, S.; Chakravarti, N.; Sanz, J.; Romero, H.; Selleri, S.; Beland, K.; Guiot, M.; et al. Efficient and Robust NK-Cell Transduction With Baboon Envelope Pseudotyped Lentivector. *Front. Immunol.* **2019**, *10*, 2873. [\[CrossRef\]](#)
69. Ingegnere, T.; Mariotti, F.R.; Pelosi, A.; Quintarelli, C.; De Angelis, B.; Tumino, N.; Besi, F.; Cantoni, C.; Locatelli, F.; Vacca, P.; et al. Human CAR NK Cells: A New Non-viral Method Allowing High Efficient Transfection and Strong Tumor Cell Killing. *Front. Immunol.* **2019**, *10*, 957. [\[CrossRef\]](#)
70. Wang, J.; Lupo, K.B.; Chambers, A.M.; Matosevic, S. Purinergic targeting enhances immunotherapy of CD73(+) solid tumors with piggyBac-engineered chimeric antigen receptor natural killer cells. *J. Immunother. Cancer* **2018**, *6*, 136. [\[CrossRef\]](#)
71. Steinman, R.M.; Cohn, Z.A. Identification of a novel cell type in peripheral lymphoid organs of mice. I. Morphology, quantitation, tissue distribution. *J. Exp. Med.* **1973**, *137*, 1142–1162. [\[CrossRef\]](#)
72. Ma, Y.; Shurin, G.V.; Peiyuan, Z.; Shurin, M.R. Dendritic cells in the cancer microenvironment. *J. Cancer* **2013**, *4*, 36–44. [\[CrossRef\]](#)
73. Gabrilovich, D. Mechanisms and functional significance of tumour-induced dendritic-cell defects. *Nat. Rev. Immunol.* **2004**, *4*, 941–952. [\[CrossRef\]](#) [\[PubMed\]](#)



74. Timmerman, J.M.; Czerwinski, D.K.; Davis, T.A.; Hsu, F.J.; Benike, C.; Hao, Z.M.; Taidi, B.; Rajapaksa, R.; Caspar, C.B.; Okada, C.Y.; et al. Idiotypic-pulsed dendritic cell vaccination for B-cell lymphoma: Clinical and immune responses in 35 patients. *Blood* **2002**, *99*, 1517–1526. [[CrossRef](#)] [[PubMed](#)]
75. Kokhaei, P.; Choudhury, A.; Mahdian, R.; Lundin, J.; Moshfegh, A.; Osterborg, A.; Mellstedt, H. Apoptotic tumor cells are superior to tumor cell lysate, and tumor cell RNA in induction of autologous T cell response in B-CLL. *Leukemia* **2004**, *18*, 1810–1815. [[CrossRef](#)] [[PubMed](#)]
76. Ho, V.T.; Vanneman, M.; Kim, H.; Sasada, T.; Kang, Y.J.; Pasek, M.; Cutler, C.; Koreth, J.; Alyea, E.; Sarantopoulos, S.; et al. Biologic activity of irradiated, autologous, GM-CSF-secreting leukemia cell vaccines early after allogeneic stem cell transplantation. *Proc. Natl. Acad. Sci. USA* **2009**, *106*, 15825–15830. [[CrossRef](#)] [[PubMed](#)]
77. Van Driessche, A.; Van de Velde, A.L.; Nijs, G.; Braeckman, T.; Stein, B.; De Vries, J.M.; Berneman, Z.N.; Van Tendeloo, V.F. Clinical-grade manufacturing of autologous mature mRNA-electroporated dendritic cells and safety testing in acute myeloid leukemia patients in a phase I dose-escalation clinical trial. *Cytotherapy* **2009**, *11*, 653–668. [[CrossRef](#)]
78. Roddie, H.; Klammer, M.; Thomas, C.; Thomson, R.; Atkinson, A.; Sproul, A.; Waterfall, M.; Samuel, K.; Yin, J.; Johnson, P.; et al. Phase I/II study of vaccination with dendritic-like leukaemia cells for the immunotherapy of acute myeloid leukaemia. *Br. J. Haematol.* **2006**, *133*, 152–157. [[CrossRef](#)]
79. Tel, J.; Anguille, S.; Waterborg, C.E.; Smits, E.L.; Figdor, C.G.; de Vries, I.J. Tumoricidal activity of human dendritic cells. *Trends Immunol.* **2014**, *35*, 38–46. [[CrossRef](#)]
80. Zhou, L.J.; Tedder, T.F. CD14+ blood monocytes can differentiate into functionally mature CD83+ dendritic cells. *Proc. Natl. Acad. Sci. USA* **1996**, *93*, 2588–2592. [[CrossRef](#)]
81. Fidler, I.J. Inhibition of pulmonary metastasis by intravenous injection of specifically activated macrophages. *Cancer Res.* **1974**, *34*, 1074–1078.
82. Andreesen, R.; Hennemann, B.; Krause, S.W. Adoptive immunotherapy of cancer using monocyte-derived macrophages: Rationale, current status, and perspectives. *J. Leukoc. Biol.* **1998**, *64*, 419–426. [[CrossRef](#)]
83. Stevenson, H.C.; Keenan, A.M.; Woodhouse, C.; Ottow, R.T.; Miller, P.; Steller, E.P.; Foon, K.A.; Abrams, P.G.; Beman, J.; Larson, S.M.; et al. Fate of gamma-interferon-activated killer blood monocytes adoptively transferred into the abdominal cavity of patients with peritoneal carcinomatosis. *Cancer Res.* **1987**, *47*, 6100–6103. [[PubMed](#)]
84. Quillien, V.; Moisan, A.; Lesimple, T.; Leberre, C.; Toujas, L. Biodistribution of 111indium-labeled macrophages infused intravenously in patients with renal carcinoma. *Cancer Immunol. Immunother.* **2001**, *50*, 477–482. [[CrossRef](#)] [[PubMed](#)]
85. Ruffell, B.; Affara, N.I.; Coussens, L.M. Differential macrophage programming in the tumor microenvironment. *Trends Immunol.* **2012**, *33*, 119–126. [[CrossRef](#)] [[PubMed](#)]
86. Squadrito, M.L.; De Palma, M. Macrophage regulation of tumor angiogenesis: Implications for cancer therapy. *Mol. Aspects Med.* **2011**, *32*, 123–145. [[CrossRef](#)] [[PubMed](#)]
87. Kan, O.; Day, D.; Iqbal, S.; Burke, F.; Grimshaw, M.J.; Naylor, S.; Binley, K. Genetically modified macrophages expressing hypoxia regulated cytochrome P450 and P450 reductase for the treatment of cancer. *Int. J. Mol. Med.* **2011**, *27*, 173–180. [[CrossRef](#)] [[PubMed](#)]
88. Basel, M.T.; Balivada, S.; Shrestha, T.B.; Seo, G.M.; Pyle, M.M.; Tamura, M.; Bossmann, S.H.; Troyer, D.L. A cell-delivered and cell-activated SN38-dextran prodrug increases survival in a murine disseminated pancreatic cancer model. *Small* **2012**, *8*, 913–920. [[CrossRef](#)] [[PubMed](#)]
89. Hagemann, T.; Lawrence, T.; McNeish, I.; Charles, K.A.; Kulbe, H.; Thompson, R.G.; Robinson, S.C.; Balkwill, F.R. “Re-educating” tumor-associated macrophages by targeting NF-kappaB. *J. Exp. Med.* **2008**, *205*, 1261–1268. [[CrossRef](#)] [[PubMed](#)]
90. Yang, T.D.; Choi, W.; Yoon, T.H.; Lee, K.J.; Lee, J.S.; Joo, J.H.; Lee, M.G.; Yim, H.S.; Choi, K.M.; Kim, B.; et al. In vivo photothermal treatment by the peritumoral injection of macrophages loaded with gold nanoshells. *Biomed. Opt. Express* **2016**, *7*, 185–193. [[CrossRef](#)]
91. Morrissey, M.A.; Williamson, A.P.; Steinbach, A.M.; Roberts, E.W.; Kern, N.; Headley, M.B.; Vale, R.D. Chimeric antigen receptors that trigger phagocytosis. *Elife* **2018**, *7*. [[CrossRef](#)]

92. Van Tendeloo, V.F.; Van de Velde, A.; Van Driessche, A.; Cools, N.; Anguille, S.; Ladell, K.; Gostick, E.; Vermeulen, K.; Pieters, K.; Nijs, G.; et al. Induction of complete and molecular remissions in acute myeloid leukemia by Wilms' tumor 1 antigen-targeted dendritic cell vaccination. *Proc. Natl. Acad. Sci. USA* **2010**, *107*, 13824–13829. [[CrossRef](#)]
93. Rosenblatt, J.; Avivi, I.; Vasir, B.; Uhl, L.; Munshi, N.C.; Katz, T.; Dey, B.R.; Somaiya, P.; Mills, H.; Campigotto, F.; et al. Vaccination with dendritic cell/tumor fusions following autologous stem cell transplant induces immunologic and clinical responses in multiple myeloma patients. *Clin. Cancer Res.* **2013**, *19*, 3640–3648. [[CrossRef](#)] [[PubMed](#)]
94. van de Loosdrecht, A.A.; van Wetering, S.; Santegoets, S.; Singh, S.K.; Eeltink, C.M.; den Hartog, Y.; Koppes, M.; Kaspers, J.; Ossenkoppele, G.J.; Kruisbeek, A.M.; et al. A novel allogeneic off-the-shelf dendritic cell vaccine for post-remission treatment of elderly patients with acute myeloid leukemia. *Cancer Immunol. Immunother.* **2018**, *67*, 1505–1518. [[CrossRef](#)] [[PubMed](#)]
95. Neelapu, S.S.; Locke, F.L.; Bartlett, N.L.; Lekakis, L.J.; Miklos, D.B.; Jacobson, C.A.; Braunschweig, I.; Oluwole, O.O.; Siddiqi, T.; Lin, Y.; et al. Axicabtagene Ciloleucel CAR T-Cell Therapy in Refractory Large B-Cell Lymphoma. *N. Engl. J. Med.* **2017**, *377*, 2531–2544. [[CrossRef](#)] [[PubMed](#)]
96. Yan, Z.; Cao, J.; Cheng, H.; Qiao, J.; Zhang, H.; Wang, Y.; Shi, M.; Lan, J.; Fei, X.; Jin, L.; et al. A combination of humanised anti-CD19 and anti-BCMA CAR T cells in patients with relapsed or refractory multiple myeloma: A single-arm, phase 2 trial. *Lancet Haematol.* **2019**, *6*, e521–e529. [[CrossRef](#)]
97. Lavergne, M.; Janus-Bell, E.; Schaff, M.; Gachet, C.; Mangin, P.H. Platelet Integrins in Tumor Metastasis: Do They Represent a Therapeutic Target? *Cancers (Basel)* **2017**, *9*, 133. [[CrossRef](#)]
98. Zhang, Y.; Liu, G.; Wei, J.; Nie, G. Platelet membrane-based and tumor-associated platelet-targeted drug delivery systems for cancer therapy. *Front. Med.* **2018**, *12*, 667–677. [[CrossRef](#)]
99. Xu, P.; Zuo, H.; Chen, B.; Wang, R.; Ahmed, A.; Hu, Y.; Ouyang, J. Corrigendum: Doxorubicin-loaded platelets as a smart drug delivery system: An improved therapy for lymphoma. *Sci. Rep.* **2017**, *7*, 44974. [[CrossRef](#)]
100. Grozovsky, R.; Giannini, S.; Falet, H.; Hoffmeister, K.M. Regulating billions of blood platelets: Glycans and beyond. *Blood* **2015**, *126*, 1877–1884. [[CrossRef](#)]
101. Janowska-Wieczorek, A.; Wysoczynski, M.; Kijowski, J.; Marquez-Curtis, L.; Machalinski, B.; Ratajczak, J.; Ratajczak, M.Z. Microvesicles derived from activated platelets induce metastasis and angiogenesis in lung cancer. *Int. J. Cancer* **2005**, *113*, 752–760. [[CrossRef](#)]
102. Gasic, G.J.; Gasic, T.B.; Galanti, N.; Johnson, T.; Murphy, S. Platelet-tumor-cell interactions in mice. The role of platelets in the spread of malignant disease. *Int. J. Cancer* **1973**, *11*, 704–718. [[CrossRef](#)]
103. Cho, M.S.; Bottsford-Miller, J.; Vasquez, H.G.; Stone, R.; Zand, B.; Kroll, M.H.; Sood, A.K.; Afshar-Kharghan, V. Platelets increase the proliferation of ovarian cancer cells. *Blood* **2012**, *120*, 4869–4872. [[CrossRef](#)] [[PubMed](#)]
104. Radziwon-Balicka, A.; Medina, C.; O'Driscoll, L.; Treumann, A.; Bazou, D.; Inkielewicz-Stepniak, I.; Radomski, A.; Jow, H.; Radomski, M.W. Platelets increase survival of adenocarcinoma cells challenged with anticancer drugs: Mechanisms and implications for chemoresistance. *Br. J. Pharmacol.* **2012**, *167*, 787–804. [[CrossRef](#)] [[PubMed](#)]
105. Tran, C.; Damaser, M.S. Stem cells as drug delivery methods: Application of stem cell secretome for regeneration. *Adv. Drug. Deliv. Rev.* **2015**, *82–83*, 1–11. [[CrossRef](#)] [[PubMed](#)]
106. Kavari, S.L.; Shah, K. Engineered stem cells targeting multiple cell surface receptors in tumors. *Stem Cells* **2020**, *38*, 34–44. [[CrossRef](#)]
107. van Rood, J.J.; Scaradavou, A.; Stevens, C.E. Indirect evidence that maternal microchimerism in cord blood mediates a graft-versus-leukemia effect in cord blood transplantation. *Proc. Natl. Acad. Sci. USA* **2012**, *109*, 2509–2514. [[CrossRef](#)]
108. Pessina, A.; Cocce, V.; Pascucci, L.; Bonomi, A.; Cavicchini, L.; Sisto, F.; Ferrari, M.; Ciusani, E.; Crovace, A.; Falchetti, M.L.; et al. Mesenchymal stromal cells primed with Paclitaxel attract and kill leukaemia cells, inhibit angiogenesis and improve survival of leukaemia-bearing mice. *Br. J. Haematol.* **2013**, *160*, 766–778. [[CrossRef](#)]
109. Ciavarella, S.; Grisendi, G.; Dominici, M.; Tucci, M.; Brunetti, O.; Dammacco, F.; Silvestris, F. In vitro anti-myeloma activity of TRAIL-expressing adipose-derived mesenchymal stem cells. *Br. J. Haematol.* **2012**, *157*, 586–598. [[CrossRef](#)]



110. Bock, A.M.; Knorr, D.; Kaufman, D.S. Development, expansion, and in vivo monitoring of human NK cells from human embryonic stem cells (hESCs) and induced pluripotent stem cells (iPSCs). *J. Vis. Exp.* **2013**, e50337. [[CrossRef](#)]
111. Themeli, M.; Kloss, C.C.; Ciriello, G.; Fedorov, V.D.; Perna, F.; Gonen, M.; Sadelain, M. Generation of tumor-targeted human T lymphocytes from induced pluripotent stem cells for cancer therapy. *Nat. Biotechnol.* **2013**, *31*, 928–933. [[CrossRef](#)]
112. Thomas, E.D.; Lochte, H.L., Jr.; Lu, W.C.; Ferrebee, J.W. Intravenous infusion of bone marrow in patients receiving radiation and chemotherapy. *N. Engl. J. Med.* **1957**, *257*, 491–496. [[CrossRef](#)]
113. Singh, A.K.; McGuirk, J.P. Allogeneic Stem Cell Transplantation: A Historical and Scientific Overview. *Cancer Res.* **2016**, *76*, 6445–6451. [[CrossRef](#)] [[PubMed](#)]
114. Bair, S.M.; Brandstadter, J.D.; Ayers, E.C.; Stadtmayer, E.A. Hematopoietic stem cell transplantation for blood cancers in the era of precision medicine and immunotherapy. *Cancer* **2020**, *126*, 1837–1855. [[CrossRef](#)] [[PubMed](#)]
115. Panch, S.R.; Szymanski, J.; Savani, B.N.; Stroncek, D.F. Sources of Hematopoietic Stem and Progenitor Cells and Methods to Optimize Yields for Clinical Cell Therapy. *Biol. Blood Marrow Transplant.* **2017**, *23*, 1241–1249. [[CrossRef](#)]
116. Khaddour, K.; Mewawalla, P. Hematopoietic Stem Cell Transplantation. In *StatPearls StatPearls [Internet], Treasure Island (FL); StatPearls Publishing: Petersburg, FL, USA, 2020*.
117. Gschwend, E.; De Oliveira, S.; Kohn, D.B. Hematopoietic stem cells for cancer immunotherapy. *Immunol. Rev.* **2014**, *257*, 237–249. [[CrossRef](#)] [[PubMed](#)]
118. Puig-Saus, C.; Parisi, G.; Garcia-Diaz, A.; Krystofinski, P.E.; Sandoval, S.; Zhang, R.; Champhekar, A.S.; McCabe, J.; Cheung-Lau, G.C.; Truong, N.A.; et al. IND-Enabling Studies for a Clinical Trial to Genetically Program a Persistent Cancer-Targeted Immune System. *Clin. Cancer Res.* **2019**, *25*, 1000–1011. [[CrossRef](#)]
119. Rapoport, A.P.; Stadtmayer, E.A.; Binder-Scholl, G.K.; Goloubeva, O.; Vogl, D.T.; Lacey, S.F.; Badros, A.Z.; Garfall, A.; Weiss, B.; Finklestein, J.; et al. NY-ESO-1-specific TCR-engineered T cells mediate sustained antigen-specific antitumor effects in myeloma. *Nat. Med.* **2015**, *21*, 914–921. [[CrossRef](#)]
120. Gimble, J.M.; Guilak, F.; Nuttall, M.E.; Sathishkumar, S.; Vidal, M.; Bunnell, B.A. In vitro Differentiation Potential of Mesenchymal Stem Cells. *Transfus. Med. Hemother.* **2008**, *35*, 228–238. [[CrossRef](#)]
121. Luo, L.; Li, T.S. Mini review: Recent advances in the cell-based therapies for cardiac regeneration. *Curr. Stem Cell Res. Ther.* **2020**. [[CrossRef](#)]
122. Rozier, P.; Maria, A.; Goulabchand, R.; Jorgensen, C.; Guilpain, P.; Noel, D. Mesenchymal Stem Cells in Systemic Sclerosis: Allogenic or Autologous Approaches for Therapeutic Use? *Front. Immunol.* **2018**, *9*, 2938. [[CrossRef](#)]
123. Conrad, S.; Weber, K.; Walliser, U.; Geburek, F.; Skutella, T. Stem Cell Therapy for Tendon Regeneration: Current Status and Future Directions. *Adv. Exp. Med. Biol.* **2019**, *1084*, 61–93. [[CrossRef](#)]
124. Bago, J.R.; Soler-Botija, C.; Casani, L.; Aguilar, E.; Alieva, M.; Rubio, N.; Bayes-Genis, A.; Blanco, J. Bioluminescence imaging of cardiomyogenic and vascular differentiation of cardiac and subcutaneous adipose tissue-derived progenitor cells in fibrin patches in a myocardium infarct model. *Int. J. Cardiol.* **2013**, *169*, 288–295. [[CrossRef](#)] [[PubMed](#)]
125. Chulpanova, D.S.; Kitaeva, K.V.; Tazetdinova, L.G.; James, V.; Rizvanov, A.A.; Solovyeva, V.V. Application of Mesenchymal Stem Cells for Therapeutic Agent Delivery in Anti-tumor Treatment. *Front. Pharmacol.* **2018**, *9*, 259. [[CrossRef](#)] [[PubMed](#)]
126. Bago, J.R.; Pegna, G.J.; Okolie, O.; Hingtgen, S.D. Fibrin matrices enhance the transplant and efficacy of cytotoxic stem cell therapy for post-surgical cancer. *Biomaterials* **2016**, *84*, 42–53. [[CrossRef](#)] [[PubMed](#)]
127. Sun, Z.; Wang, S.; Zhao, R.C. The roles of mesenchymal stem cells in tumor inflammatory microenvironment. *J. Hematol. Oncol.* **2014**, *7*, 14. [[CrossRef](#)]
128. Xu, S.; Menu, E.; De Becker, A.; Van Camp, B.; Vanderkerken, K.; Van Riet, I. Bone marrow-derived mesenchymal stromal cells are attracted by multiple myeloma cell-produced chemokine CCL25 and favor myeloma cell growth in vitro and in vivo. *Stem Cells* **2012**, *30*, 266–279. [[CrossRef](#)]
129. Klopp, A.H.; Spaeth, E.L.; Dembinski, J.L.; Woodward, W.A.; Munshi, A.; Meyn, R.E.; Cox, J.D.; Andreeff, M.; Marini, F.C. Tumor irradiation increases the recruitment of circulating mesenchymal stem cells into the tumor microenvironment. *Cancer Res.* **2007**, *67*, 11687–11695. [[CrossRef](#)]

130. Li, X.; Lu, Y.; Huang, W.; Xu, H.; Chen, X.; Geng, Q.; Fan, H.; Tan, Y.; Xue, G.; Jiang, X. In vitro effect of adenovirus-mediated human Gamma Interferon gene transfer into human mesenchymal stem cells for chronic myelogenous leukemia. *Hematol. Oncol.* **2006**, *24*, 151–158. [[CrossRef](#)]
131. Bonomi, A.; Steimberg, N.; Benetti, A.; Berenzi, A.; Alessandri, G.; Pascucci, L.; Boniotti, J.; Cocce, V.; Sordi, V.; Pessina, A.; et al. Paclitaxel-releasing mesenchymal stromal cells inhibit the growth of multiple myeloma cells in a dynamic 3D culture system. *Hematol. Oncol.* **2017**, *35*, 693–702. [[CrossRef](#)]
132. Cocce, V.; Farronato, D.; Brini, A.T.; Masia, C.; Gianni, A.B.; Piovani, G.; Sisto, F.; Alessandri, G.; Angiero, F.; Pessina, A. Drug Loaded Gingival Mesenchymal Stromal Cells (GinPa-MSCs) Inhibit In Vitro Proliferation of Oral Squamous Cell Carcinoma. *Sci. Rep.* **2017**, *7*, 9376. [[CrossRef](#)]
133. Dwyer, R.M.; Khan, S.; Barry, F.P.; O'Brien, T.; Kerin, M.J. Advances in mesenchymal stem cell-mediated gene therapy for cancer. *Stem Cell Res. Ther.* **2010**, *1*, 25. [[CrossRef](#)]
134. Klingemann, H.; Matzilevich, D.; Marchand, J. Mesenchymal Stem Cells—Sources and Clinical Applications. *Transfus. Med. Hemother.* **2008**, *35*, 272–277. [[CrossRef](#)] [[PubMed](#)]
135. Lin, H.D.; Fong, C.Y.; Biswas, A.; Choolani, M.; Bongso, A. Human Umbilical Cord Wharton's Jelly Stem Cell Conditioned Medium Induces Tumorcidal Effects on Lymphoma Cells Through Hydrogen Peroxide Mediation. *J. Cell. Biochem.* **2016**, *117*, 2045–2055. [[CrossRef](#)] [[PubMed](#)]
136. Lee, M.W.; Park, Y.J.; Kim, D.S.; Park, H.J.; Jung, H.L.; Lee, J.W.; Sung, K.W.; Koo, H.H.; Yoo, K.H. Human Adipose Tissue Stem Cells Promote the Growth of Acute Lymphoblastic Leukemia Cells in NOD/SCID Mice. *Stem Cell Rev. Rep.* **2018**, *14*, 451–460. [[CrossRef](#)]
137. Song, N.; Gao, L.; Qiu, H.; Huang, C.; Cheng, H.; Zhou, H.; Lv, S.; Chen, L.; Wang, J. Mouse bone marrow-derived mesenchymal stem cells inhibit leukemia/lymphoma cell proliferation in vitro and in a mouse model of allogeneic bone marrow transplant. *Int. J. Mol. Med.* **2015**, *36*, 139–149. [[CrossRef](#)] [[PubMed](#)]
138. Ramasamy, R.; Lam, E.W.; Soeiro, I.; Tisato, V.; Bonnet, D.; Dazzi, F. Mesenchymal stem cells inhibit proliferation and apoptosis of tumor cells: Impact on in vivo tumor growth. *Leukemia* **2007**, *21*, 304–310. [[CrossRef](#)] [[PubMed](#)]
139. Sarmadi, V.H.; Tong, C.K.; Vidyadaran, S.; Abdullah, M.; Seow, H.F.; Ramasamy, R. Mesenchymal stem cells inhibit proliferation of lymphoid origin haematopoietic tumour cells by inducing cell cycle arrest. *Med. J. Malaysia* **2010**, *65*, 209–214. [[PubMed](#)]
140. Ning, H.; Yang, F.; Jiang, M.; Hu, L.; Feng, K.; Zhang, J.; Yu, Z.; Li, B.; Xu, C.; Li, Y.; et al. The correlation between cotransplantation of mesenchymal stem cells and higher recurrence rate in hematologic malignancy patients: Outcome of a pilot clinical study. *Leukemia* **2008**, *22*, 593–599. [[CrossRef](#)]
141. Manabe, A.; Coustan-Smith, E.; Behm, F.G.; Raimondi, S.C.; Campana, D. Bone marrow-derived stromal cells prevent apoptotic cell death in B-lineage acute lymphoblastic leukemia. *Blood* **1992**, *79*, 2370–2377. [[CrossRef](#)]
142. Nwabo Kamdje, A.H.; Mosna, F.; Bifari, F.; Lisi, V.; Bassi, G.; Malpeli, G.; Ricciardi, M.; Perbellini, O.; Scupoli, M.T.; Pizzolo, G.; et al. Notch-3 and Notch-4 signaling rescue from apoptosis human B-ALL cells in contact with human bone marrow-derived mesenchymal stromal cells. *Blood* **2011**, *118*, 380–389. [[CrossRef](#)]
143. Di Ianni, M.; Del Papa, B.; De Ioanni, M.; Moretti, L.; Bonifacio, E.; Cecchini, D.; Sportoletti, P.; Falzetti, F.; Tabilio, A. Mesenchymal cells recruit and regulate T regulatory cells. *Exp. Hematol.* **2008**, *36*, 309–318. [[CrossRef](#)]
144. Sotiropoulou, P.A.; Perez, S.A.; Gritzapis, A.D.; Baxevanis, C.N.; Papamichail, M. Interactions between human mesenchymal stem cells and natural killer cells. *Stem Cells* **2006**, *24*, 74–85. [[CrossRef](#)] [[PubMed](#)]
145. Roorda, B.D.; ter Elst, A.; Kamps, W.A.; de Bont, E.S. Bone marrow-derived cells and tumor growth: Contribution of bone marrow-derived cells to tumor micro-environments with special focus on mesenchymal stem cells. *Crit. Rev. Oncol. Hematol.* **2009**, *69*, 187–198. [[CrossRef](#)] [[PubMed](#)]
146. Xia, B.; Tian, C.; Guo, S.; Zhang, L.; Zhao, D.; Qu, F.; Zhao, W.; Wang, Y.; Wu, X.; Da, W.; et al. c-Myc plays part in drug resistance mediated by bone marrow stromal cells in acute myeloid leukemia. *Leuk. Res.* **2015**, *39*, 92–99. [[CrossRef](#)] [[PubMed](#)]
147. Cai, J.; Wang, J.; Huang, Y.; Wu, H.; Xia, T.; Xiao, J.; Chen, X.; Li, H.; Qiu, Y.; Wang, Y.; et al. ERK/Drp1-dependent mitochondrial fission is involved in the MSC-induced drug resistance of T-cell acute lymphoblastic leukemia cells. *Cell Death Dis.* **2016**, *7*, e2459. [[CrossRef](#)]
148. Lee, M.W.; Ryu, S.; Kim, D.S.; Lee, J.W.; Sung, K.W.; Koo, H.H.; Yoo, K.H. Mesenchymal stem cells in suppression or progression of hematologic malignancy: Current status and challenges. *Leukemia* **2019**, *33*, 597–611. [[CrossRef](#)]

149. Barber, C.L.; Iruela-Arispe, M.L. The ever-elusive endothelial progenitor cell: Identities, functions and clinical implications. *Pediatr. Res.* **2006**, *59*, 26R–32R. [[CrossRef](#)]
150. Chopra, H.; Hung, M.K.; Kwong, D.L.; Zhang, C.F.; Pow, E.H.N. Insights into Endothelial Progenitor Cells: Origin, Classification, Potentials, and Prospects. *Stem Cells Int.* **2018**, *2018*, 9847015. [[CrossRef](#)]
151. Laurenzana, A.; Margheri, F.; Chilla, A.; Biagioni, A.; Margheri, G.; Calorini, L.; Fibbi, G.; Del Rosso, M. Endothelial Progenitor Cells as Shuttle of Anticancer Agents. *Hum. Gene Ther.* **2016**, *27*, 784–791. [[CrossRef](#)]
152. Keighron, C.; Lyons, C.J.; Creane, M.; O'Brien, T.; Liew, A. Recent Advances in Endothelial Progenitor Cells Toward Their Use in Clinical Translation. *Front. Med. (Lausanne)* **2018**, *5*, 354. [[CrossRef](#)]
153. Zhao, X.; Liu, H.Q.; Li, J.; Liu, X.L. Endothelial progenitor cells promote tumor growth and progression by enhancing new vessel formation. *Oncol. Lett.* **2016**, *12*, 793–799. [[CrossRef](#)]
154. Takahashi, K.; Yamanaka, S. Induction of pluripotent stem cells from mouse embryonic and adult fibroblast cultures by defined factors. *Cell* **2006**, *126*, 663–676. [[CrossRef](#)] [[PubMed](#)]
155. Lei, F.; Haque, R.; Weiler, L.; Vrana, K.E.; Song, J. T lineage differentiation from induced pluripotent stem cells. *Cell Immunol.* **2009**, *260*, 1–5. [[CrossRef](#)] [[PubMed](#)]
156. Watarai, H.; Fujii, S.; Yamada, D.; Rybouchkin, A.; Sakata, S.; Nagata, Y.; Iida-Kobayashi, M.; Sekine-Kondo, E.; Shimizu, K.; Shozaki, Y.; et al. Murine induced pluripotent stem cells can be derived from and differentiate into natural killer T cells. *J. Clin. Invest.* **2010**, *120*, 2610–2618. [[CrossRef](#)] [[PubMed](#)]
157. Zhang, L.; Tian, L.; Dai, X.; Yu, H.; Wang, J.; Lei, A.; Zhao, W.; Zhu, Y.; Sun, Z.; Zhang, H.; et al. Induced Pluripotent Stem Cell-derived CAR-Macrophage Cells with Antigen-dependent Anti-Cancer Cell Functions for Liquid and Solid Tumors. *bioRxiv* **2020**. [[CrossRef](#)]
158. Yasuda, S.; Kusakawa, S.; Kuroda, T.; Miura, T.; Tano, K.; Takada, N.; Matsuyama, S.; Matsuyama, A.; Nasu, M.; Umezawa, A.; et al. Tumorigenicity-associated characteristics of human iPS cell lines. *PLoS ONE* **2018**, *13*, e0205022. [[CrossRef](#)] [[PubMed](#)]



© 2020 by the authors. Licensee MDPI, Basel, Switzerland. This article is an open access article distributed under the terms and conditions of the Creative Commons Attribution (CC BY) license (<http://creativecommons.org/licenses/by/4.0/>).