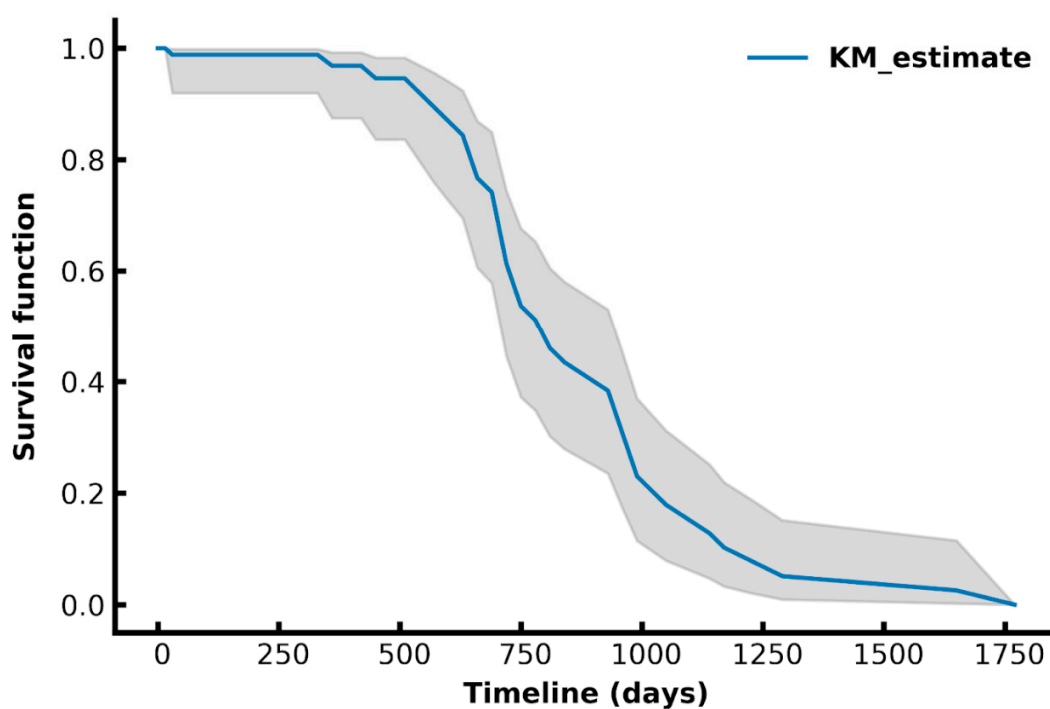


**Table S1.** Feature list for model development.

Gender	original_firstorder_TotalEnergy	original_gldm_JointAverage	original_gldm_LowGrayLevelEmphasis	original_glszm_SizeZoneNonUniformity
Age	original_firstorder_Uniformity	original_gldm_JointEnergy	original_gldm_SmallDependenceEmphasis	original_glszm_SizeZoneNonUniformityNormalized
original_shape_SurfaceVolumeRatio	original_firstorder_Variance	original_gldm_JointEntropy	original_gldm_SmallDependenceHighGrayLevelEmphasis	original_glszm_SmallAreaEmphasis
original_shape_VoxelVolume	original_gldm_AutoCorrelation	original_gldm_MCC	original_gldm_SmallDependenceLowGrayLevelEmphasis	original_glszm_SmallAreaHighGrayLevelEmphasis
original_firstorder_10Percentile	original_gldm_ClusterProminence	original_gldm_MaximumProbability	original_gldm_GrayLevelNonUniformity	original_glszm_SmallAreaLowGrayLevelEmphasis
original_firstorder_90Percentile	original_gldm_ClusterShade	original_gldm_SumAverage	original_gldm_GrayLevelNonUniformityNormalized	original_glszm_ZoneEntropy
original_firstorder_Energy	original_gldm_ClusterTendency	original_gldm_SumEntropy	original_gldm_GrayLevelVariance	original_glszm_ZonePercentage
original_firstorder_Entropy	original_gldm_Contrast	original_gldm_SumSquares	original_gldm_HighGrayLevelRunEmphasis	original_glszm_ZoneVariance
original_firstorder_InterquartileRange	original_gldm_Correlation	original_gldm_DependenceEntropy	original_gldm_LongRunEmphasis	original_ngtdm_Busyness
original_firstorder_Kurtosis	original_gldm_DifferenceAverage	original_gldm_DependenceNonUniformity	original_gldm_LongRunHighGrayLevelEmphasis	original_ngtdm_Coarseness
original_firstorder_Maximum	original_gldm_DifferenceEntropy	original_gldm_DependenceNonUniformityNormalized	original_gldm_LongRunLowGrayLevelEmphasis	original_ngtdm_Complexity
original_firstorder_MeanAbsoluteDeviation	original_gldm_DifferenceVariance	original_gldm_DependenceVariance	original_gldm_LowGrayLevelRunEmphasis	original_ngtdm_Contrast
original_firstorder_Mean	original_gldm_Id	original_gldm_GrayLevelNonUniformity	original_gldm_RunEntropy	original_ngtdm_Strength
original_firstorder_Median	original_gldm_Idm	original_gldm_GrayLevelVariance	original_gldm_RunLengthNonUniformity	original_gldm_ShortRunHighGrayLevelEmphasis
original_firstorder_Minimum	original_gldm_Idmn	original_gldm_HighGrayLevelEmphasis	original_gldm_RunLengthNonUniformityNormalized	original_gldm_ShortRunLowGrayLevelEmphasis

original_firstorder_Range	original_glcmlcn_Idn	original_gldm_LargeDependenceEmphasis	original_glrlnm_RunPercentage	original_glszm_GrayLevelNonUniformity
original_firstorder_RobustMeanAbsoluteDeviation	original_glcmlcn_Imc1	original_gldm_LargeDependenceHighGrayLevelEmphasis	original_glrlnm_RunVariance	original_glszm_GrayLevelNonUniformityNormalized
original_firstorder_RootMeanSquared	original_glcmlcn_Imc2	original_gldm_LargeDependenceLowGrayLevelEmphasis	original_glrlnm_ShortRunEmphasis	original_glszm_GrayLevelVariance
original_firstorder_Skewness	original_glcmlcn_InverseVariance	original_glszm_LowGrayLevelZoneEmphasis	original_glszm_LargeAreaHighGrayLevelEmphasis	original_glszm_HighGrayLevelZoneEmphasis
original_glszm_LargeAreaLowGrayLevelEmphasis	original_glszm_LargeAreaEmphasis			



**Figure S1.** Kaplan Meier curve of survival estimation (MSH n = 89).