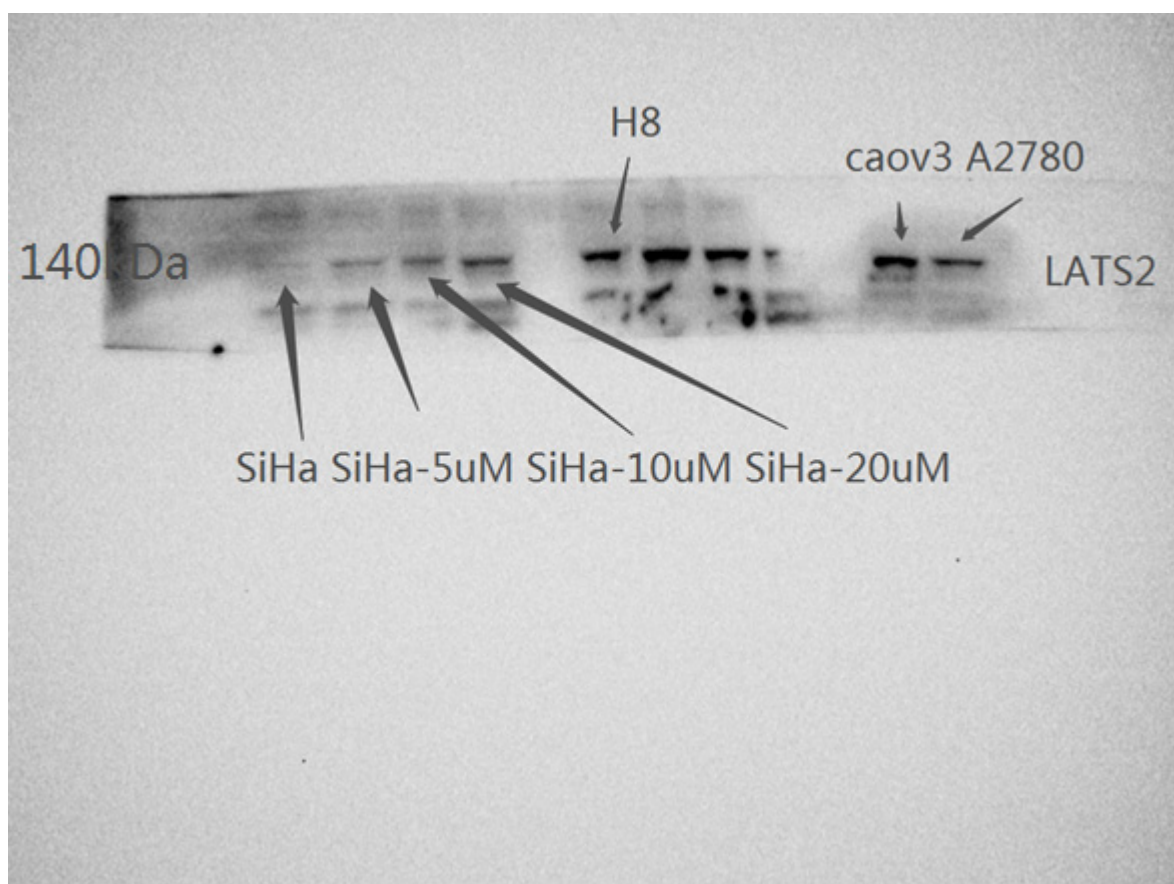
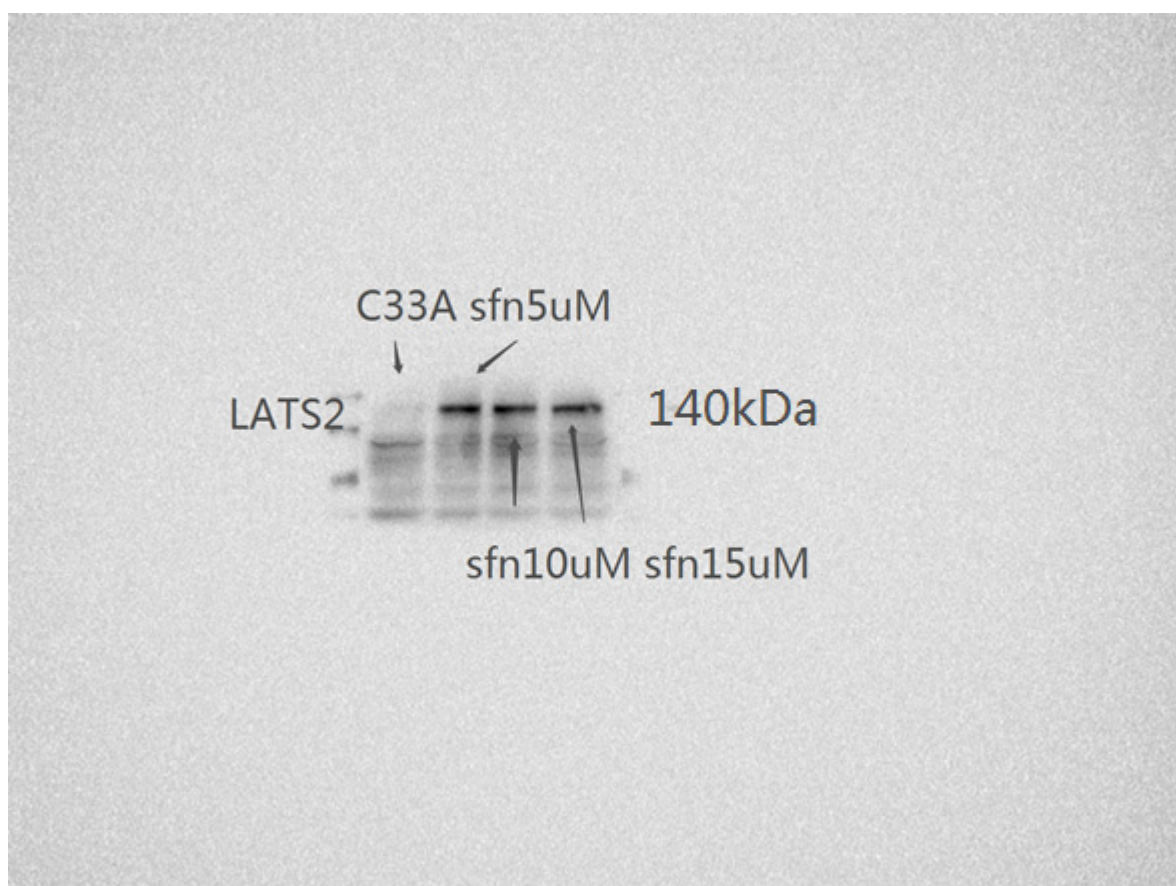
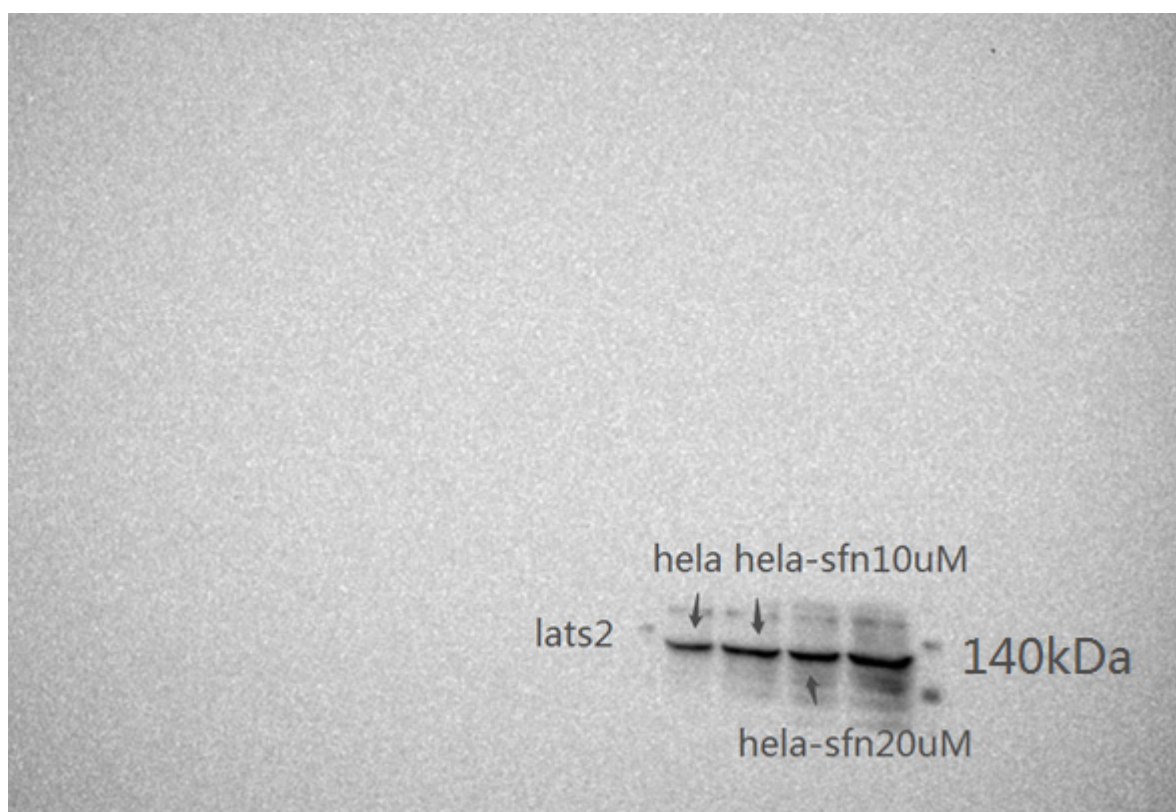
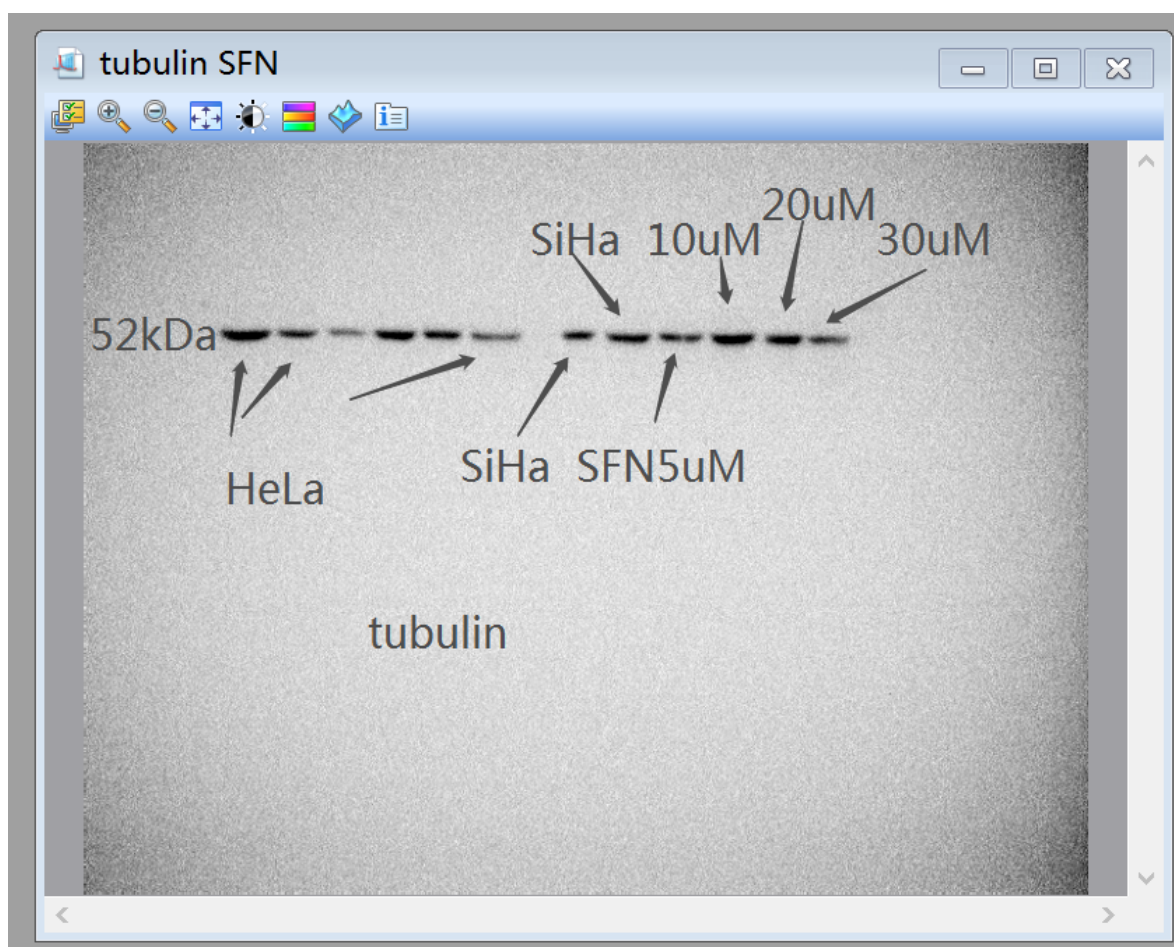


Supplementary Material: SFN Enhanced the Radiosensitivity of Cervical Cancer Cells via Activating LATS2 and Blocking Rad51/MDC1 Recruitment to DNA Damage Site

Shiyu Wang, Yanan Wang, Xiangnan Liu, Yongbin Yang, Sufang Wu and Yuan Liu







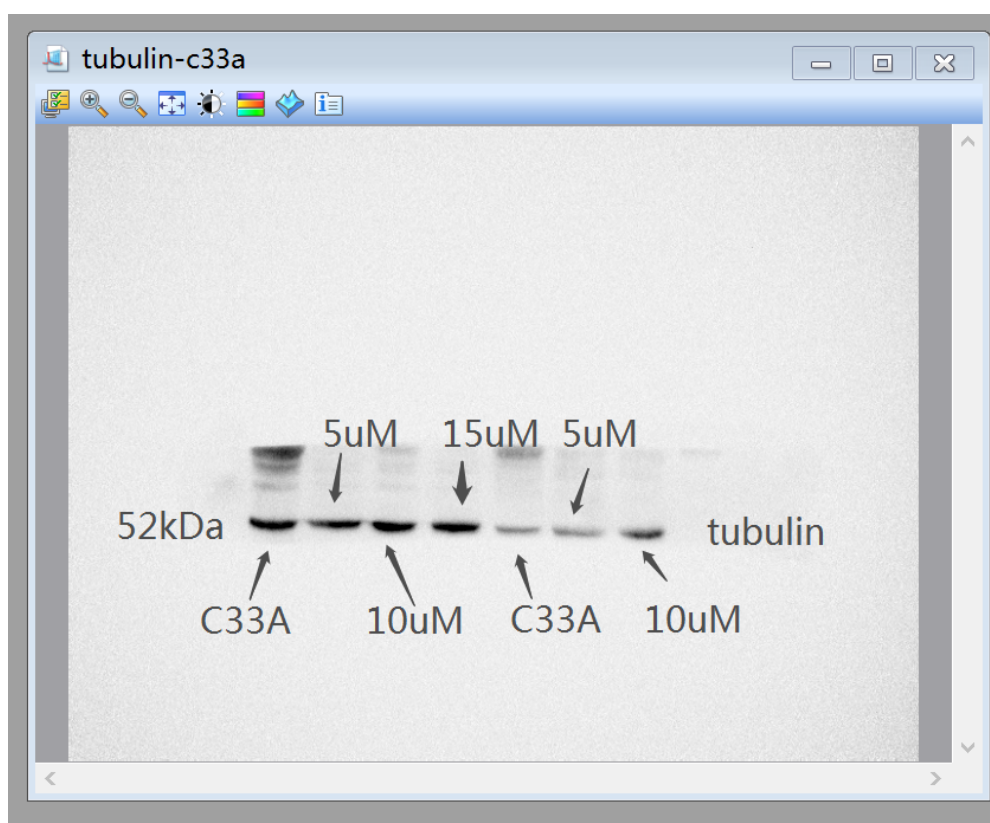
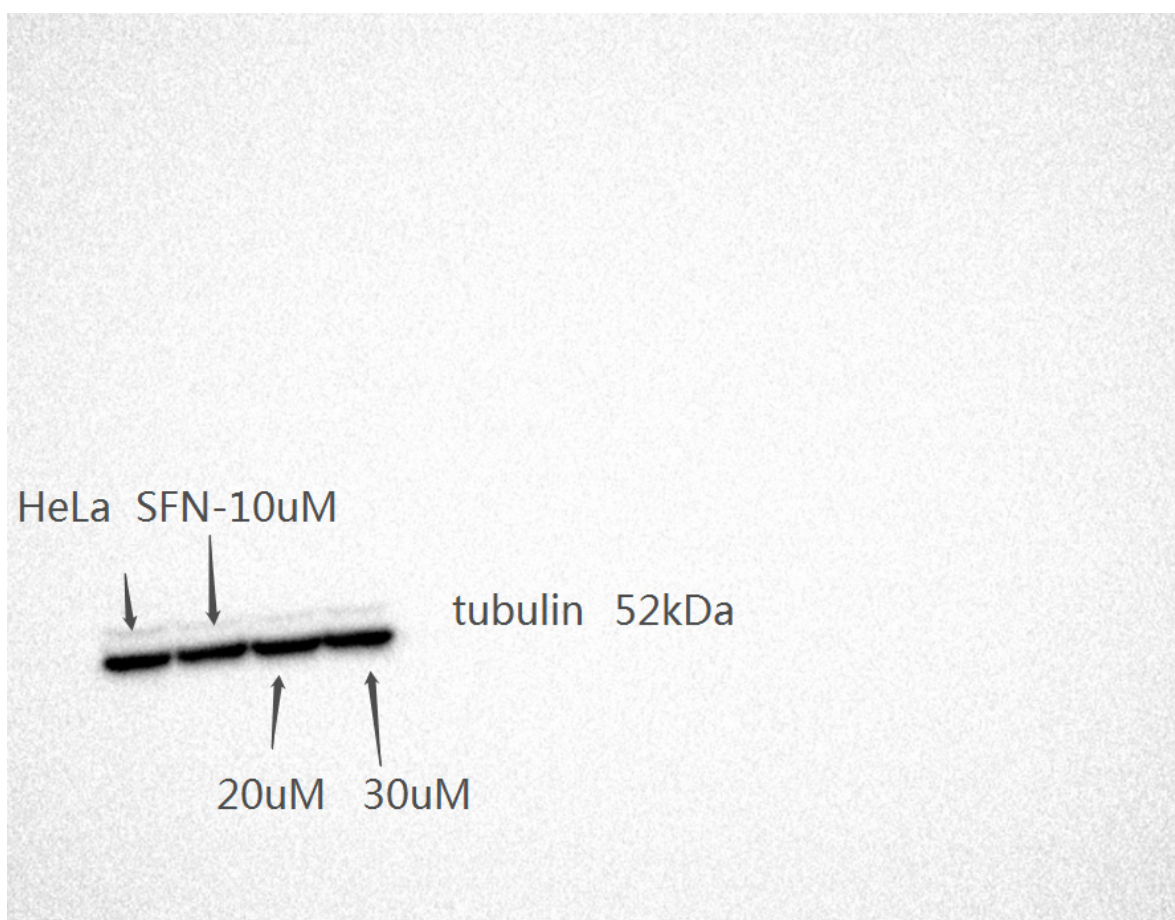
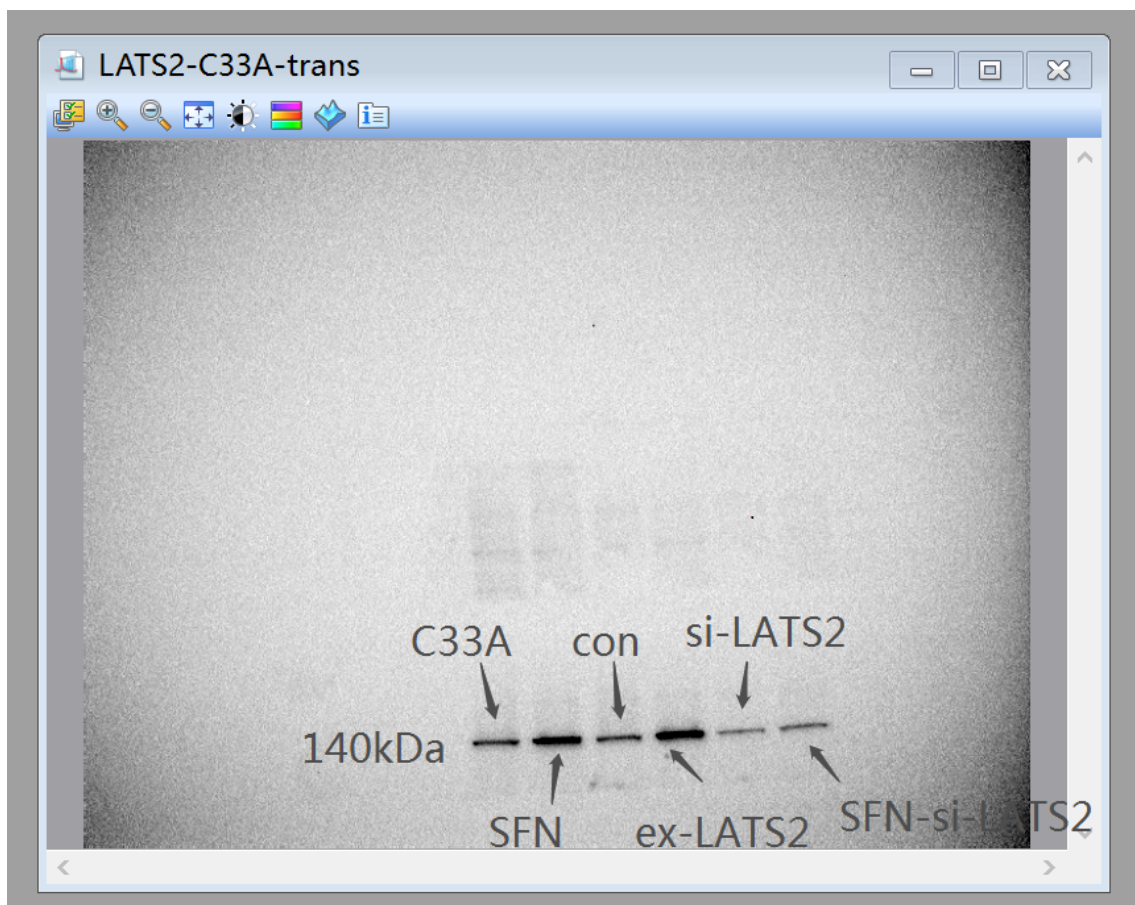
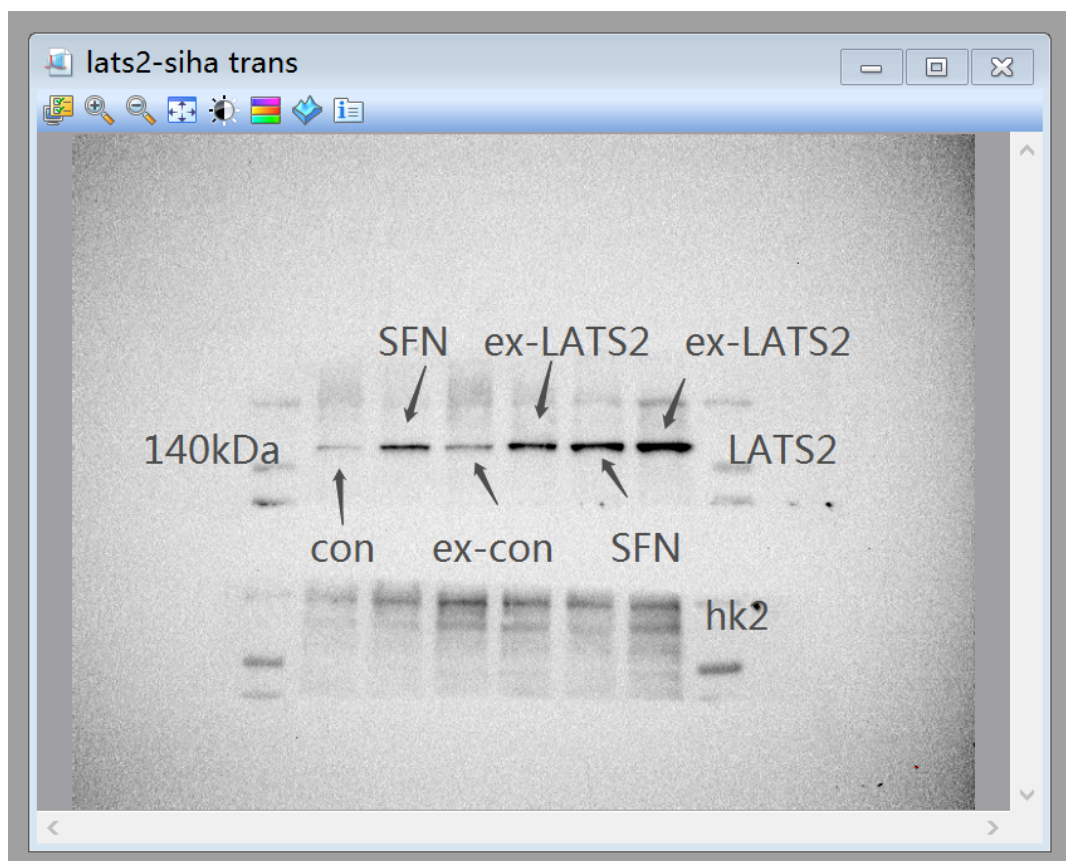
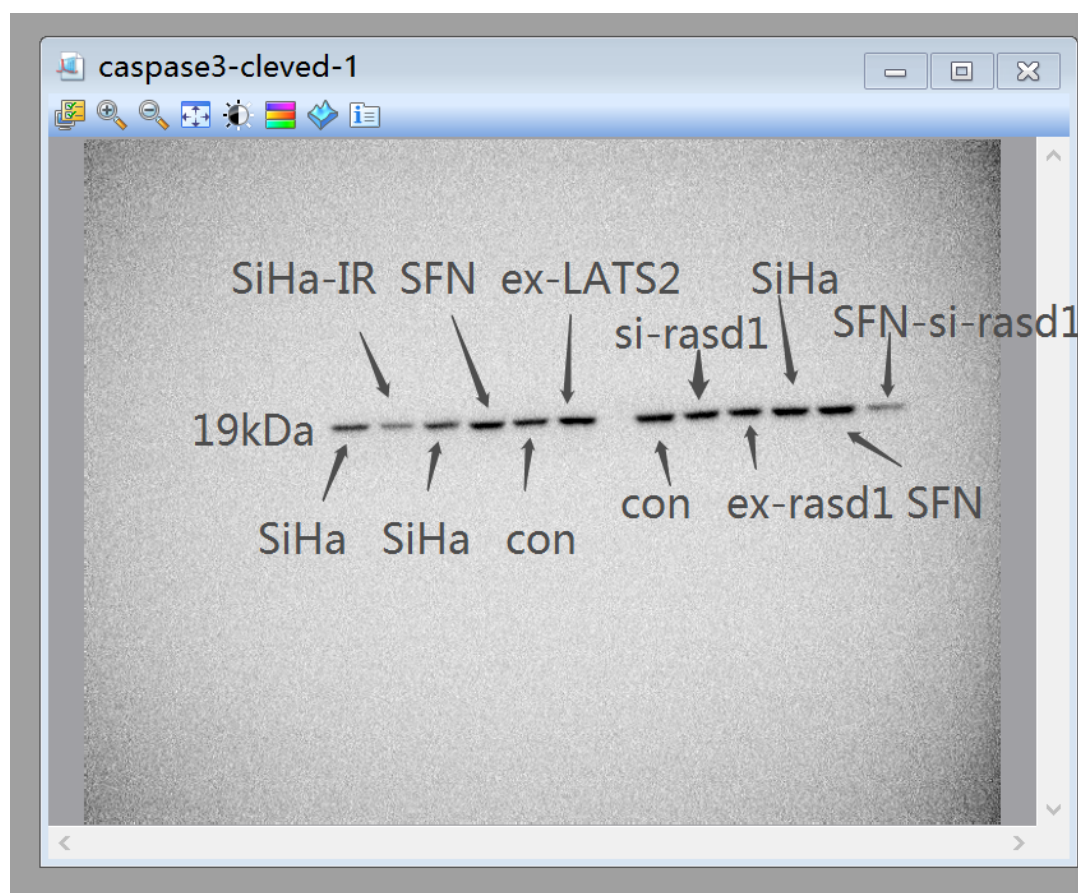
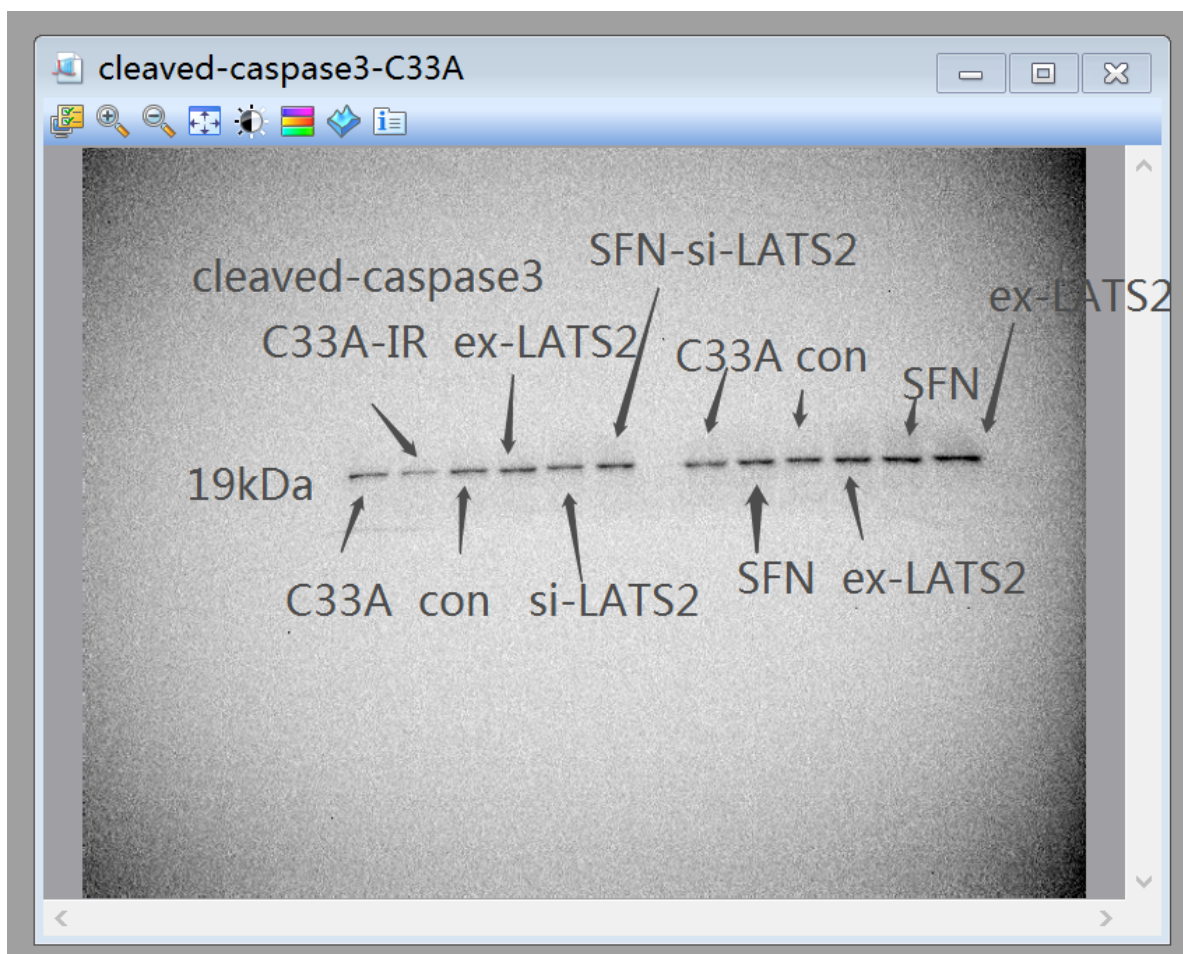
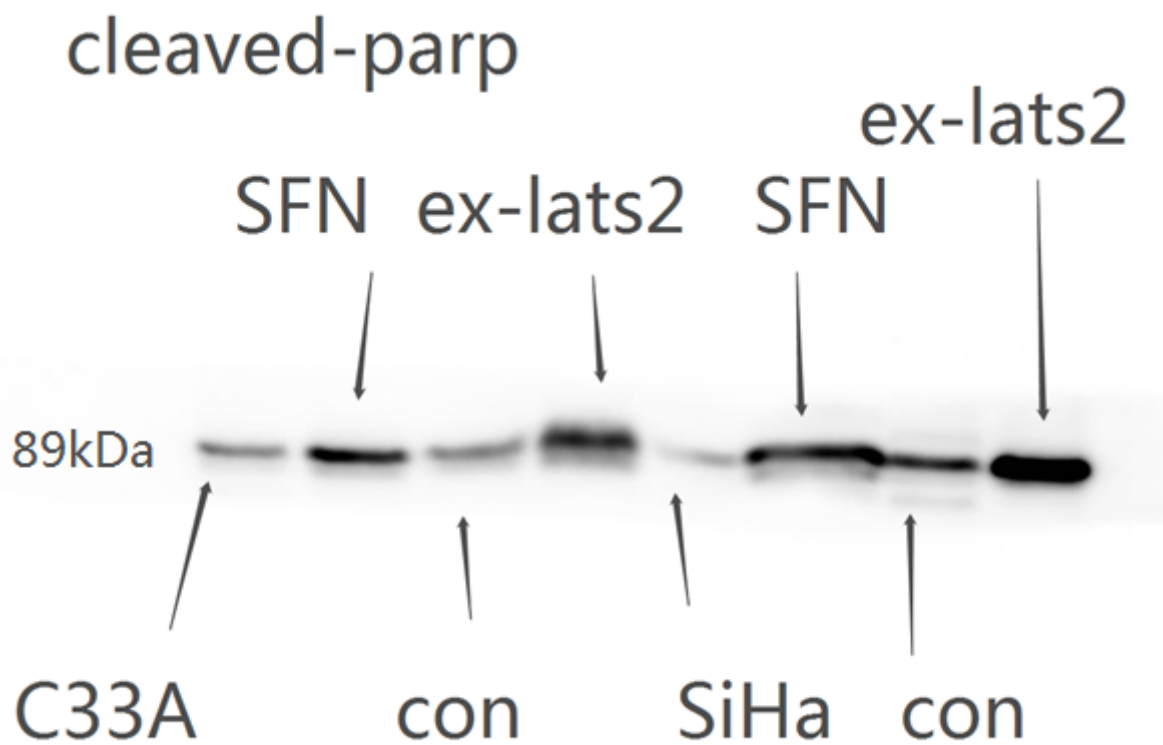
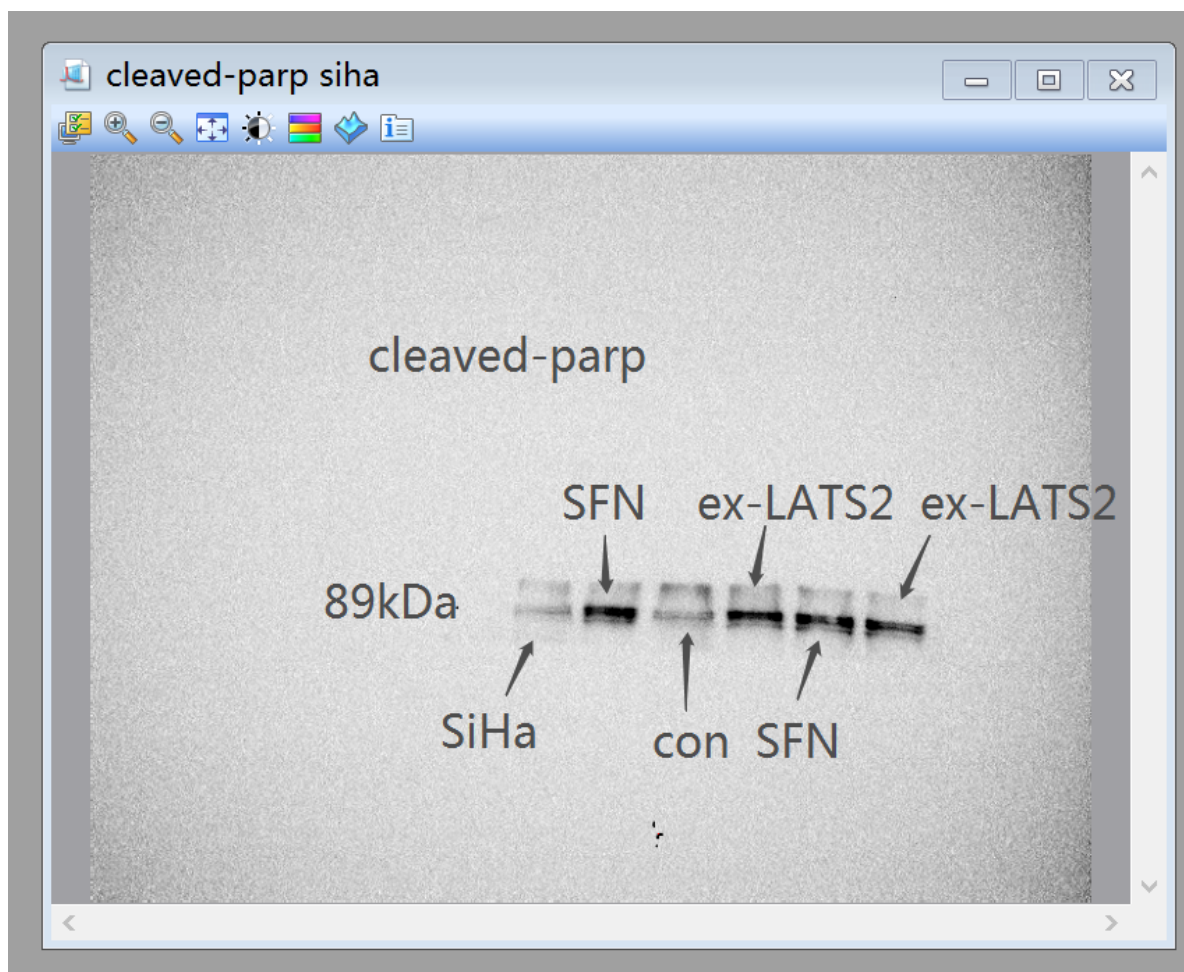


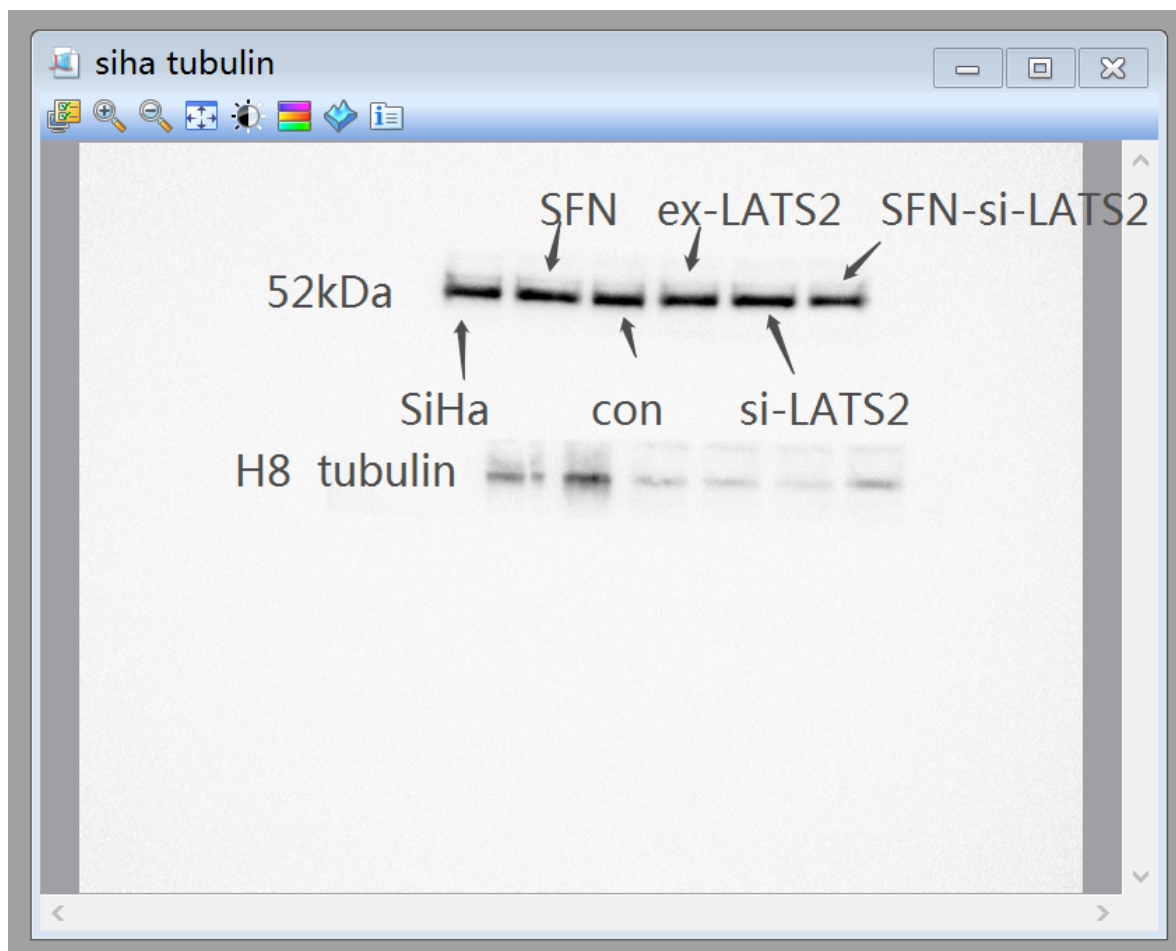
Figure S1. The original western blot for figures 1D.











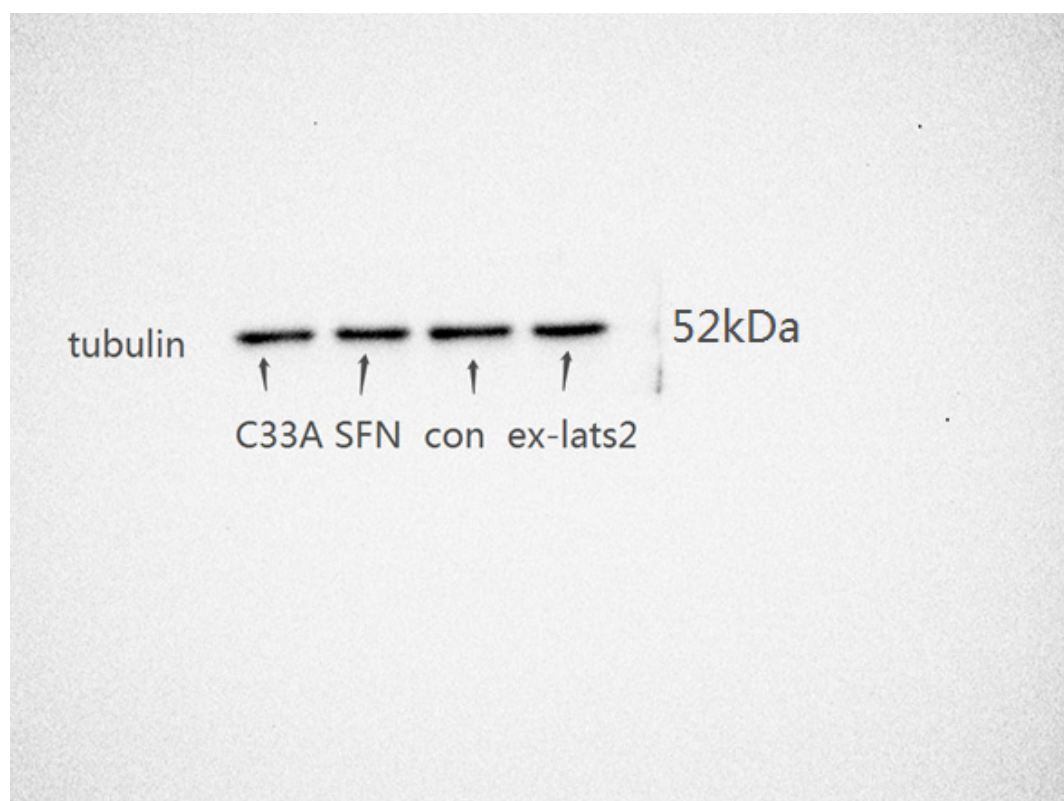
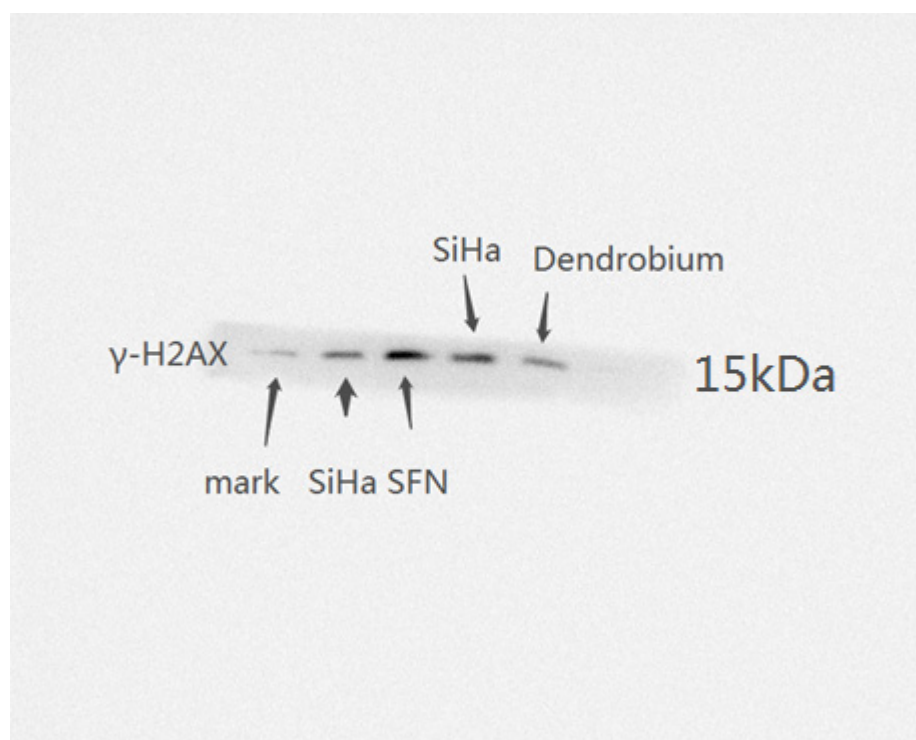
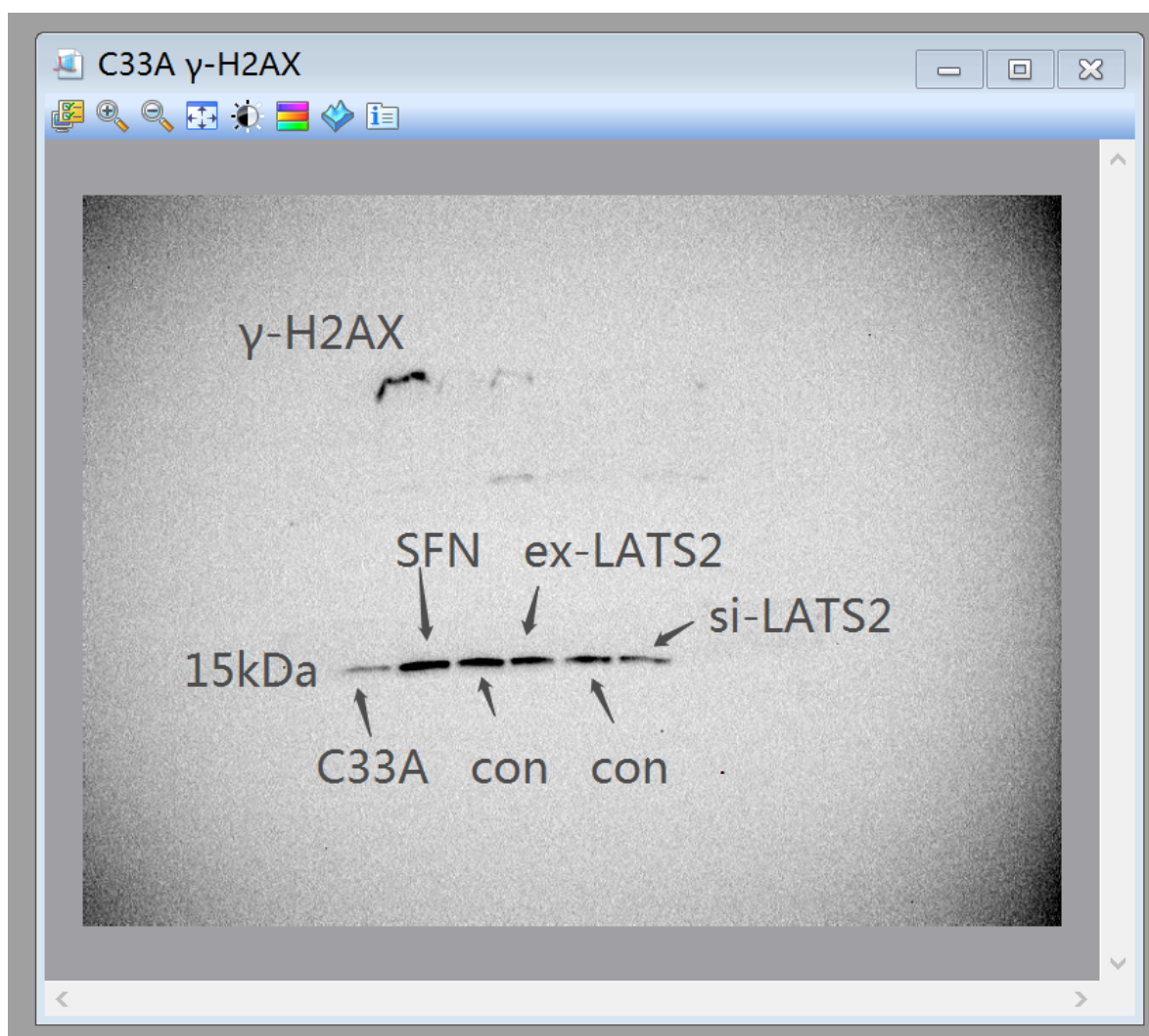


Figure S2. The original western blots for figure 2C.





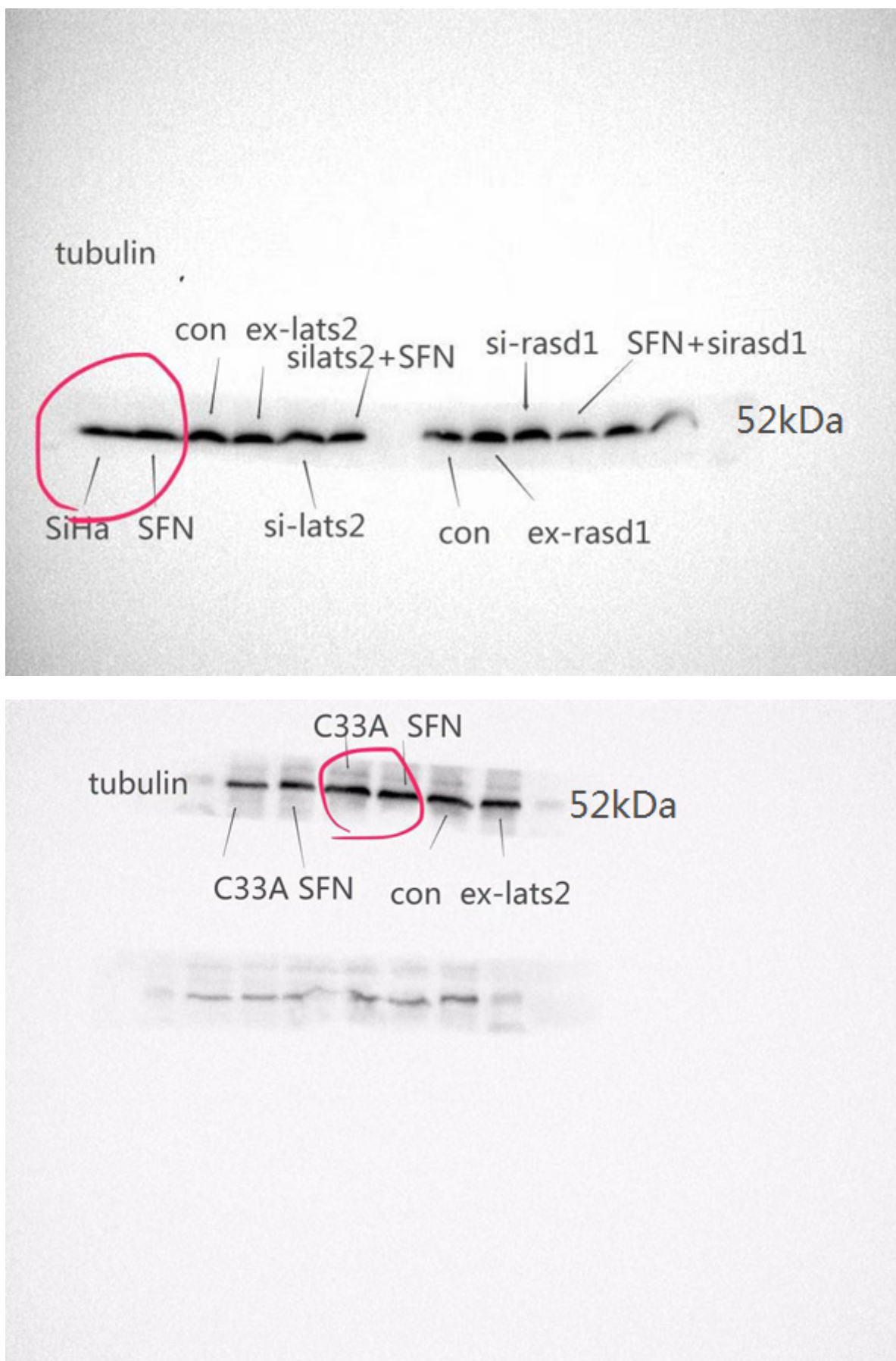
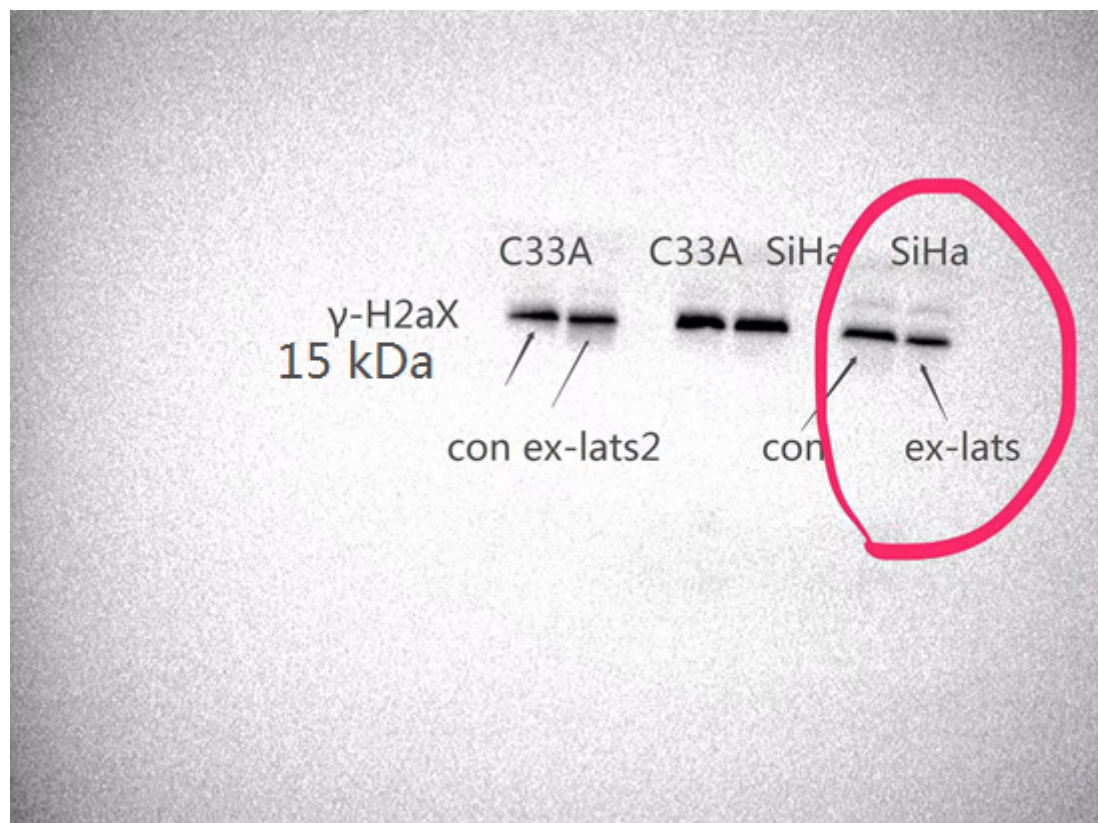
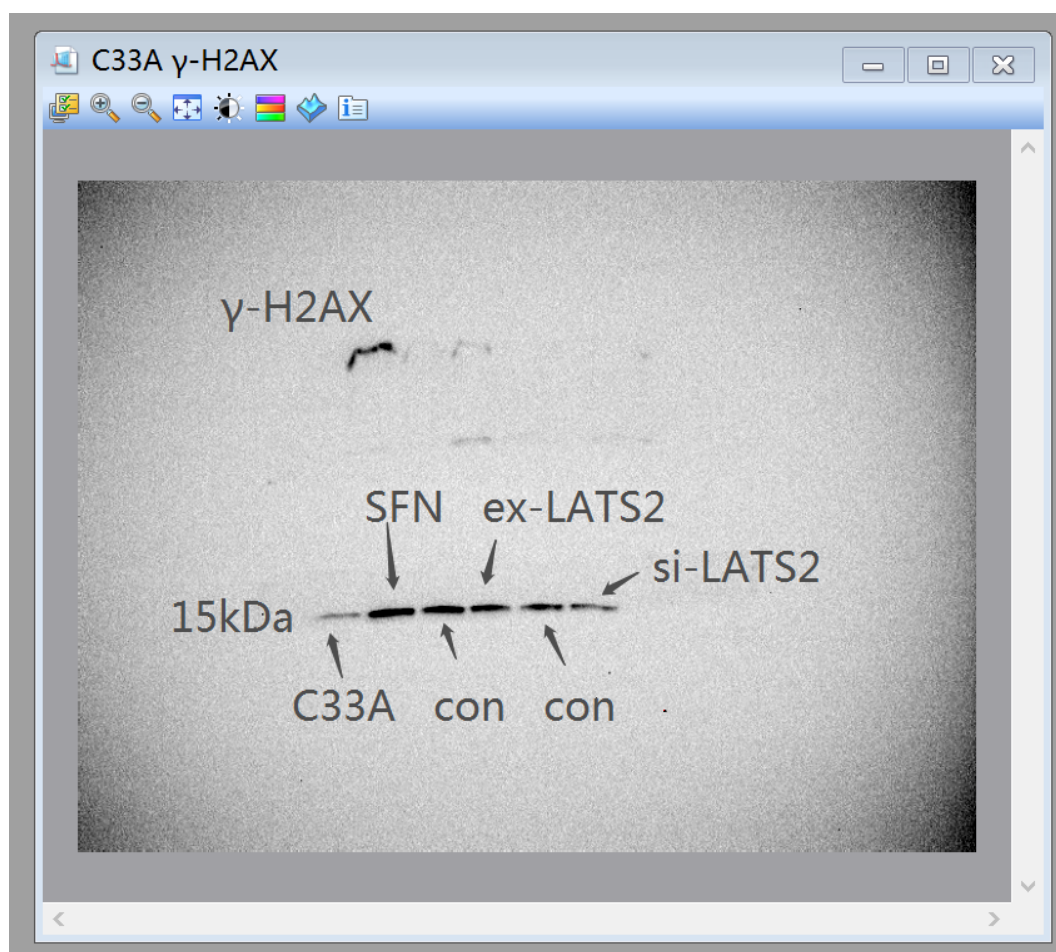


Figure S3. The original western blots for figure 3D.





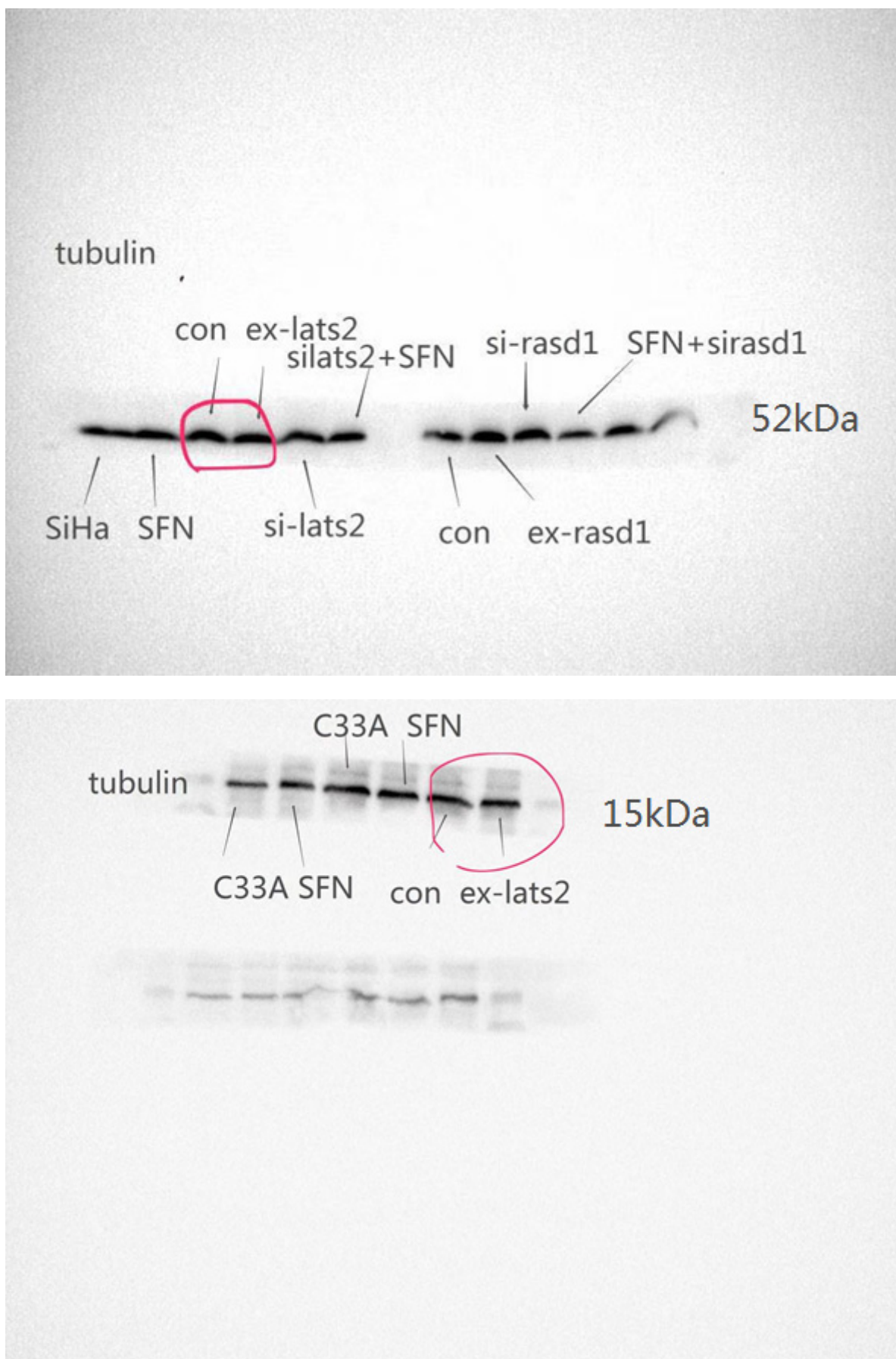


Figure S4. The original western blots for figure 4B.