

Figure S1. Prognostic analysis of LHX2 in different malignancies. **(A–E)** Kaplan–Meier overall survival (OS) and disease specific survival (DSS) for samples in high– and low–LHX2 groups in ACC **(A)**, ESAD **(B)**, GBMLGG **(C)**, KIRC **(D)** and MESO **(E)** in TCGA database.

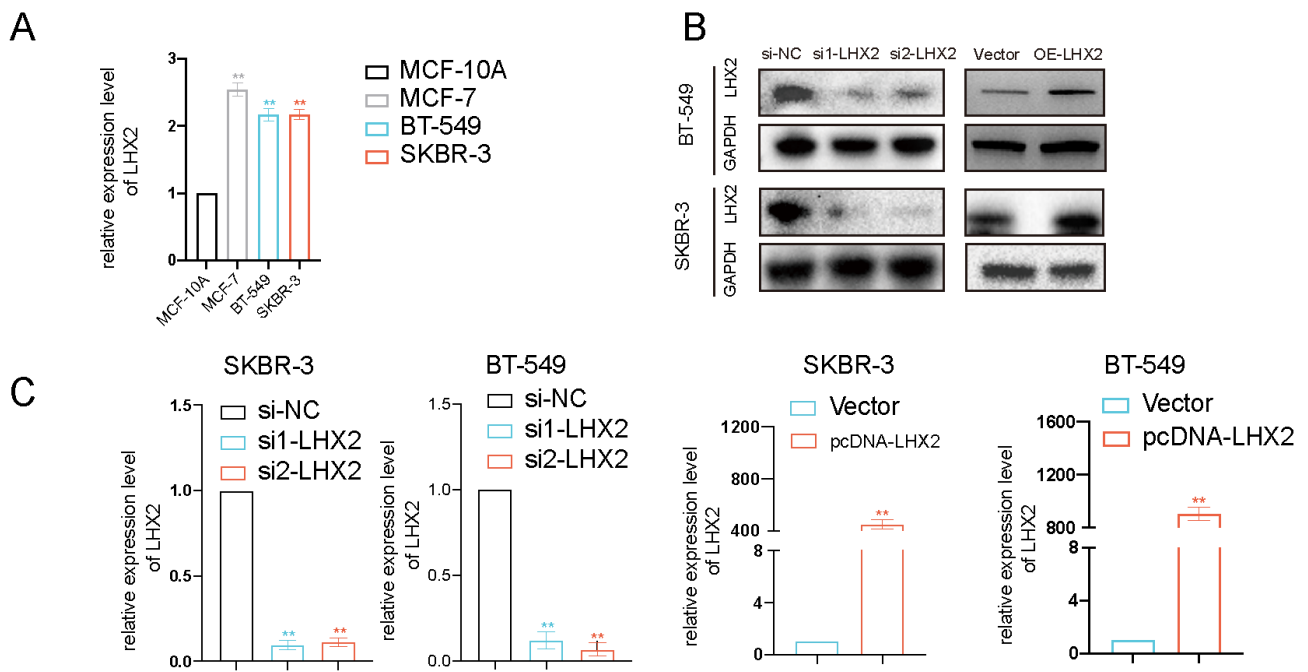


Figure S2 Expression level of LHX2 and manipulation of the expression of LHX2 in breast cancer cells. **(A)** Analysis of LHX2 expression levels in breast cancer cell lines and normal mammary epithelial cells by qRT-PCR. **(B)** Western-blot analysis of LHX2 expression level in SKBR-3 and BT549 cells after being transfected with siRNAs of LHX2 or overexpression plasmid of LHX2 **(C)** Analysis of LHX2 RNA expression level following treatment SKBR-3 and BT549 cells with siRNAs of LHX2 or overexpression plasmid of LHX2.