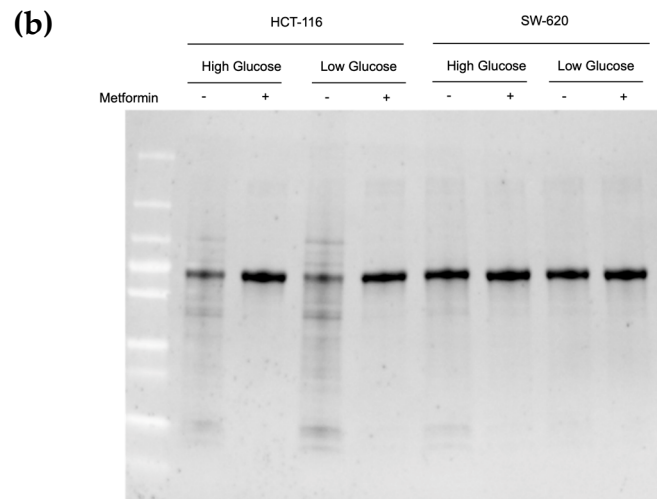
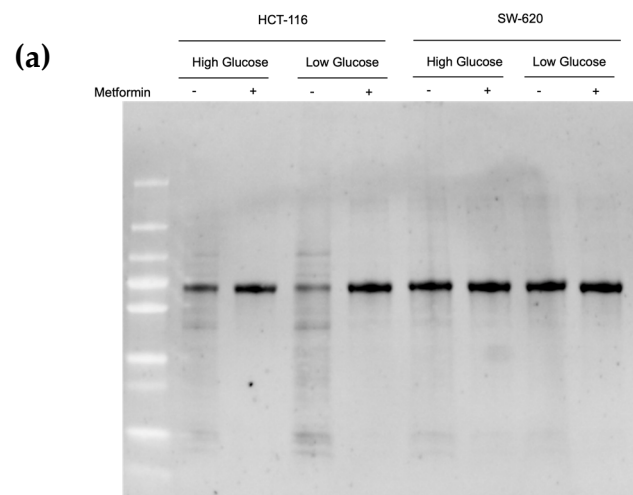
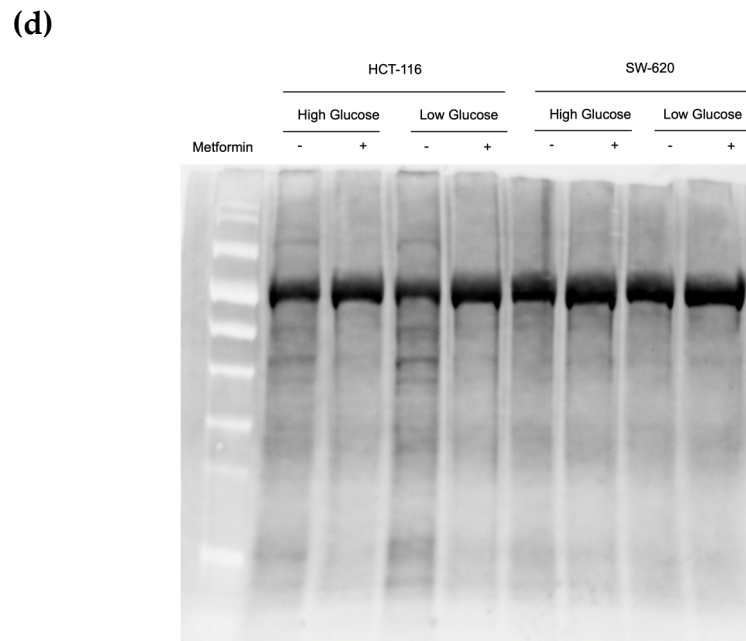
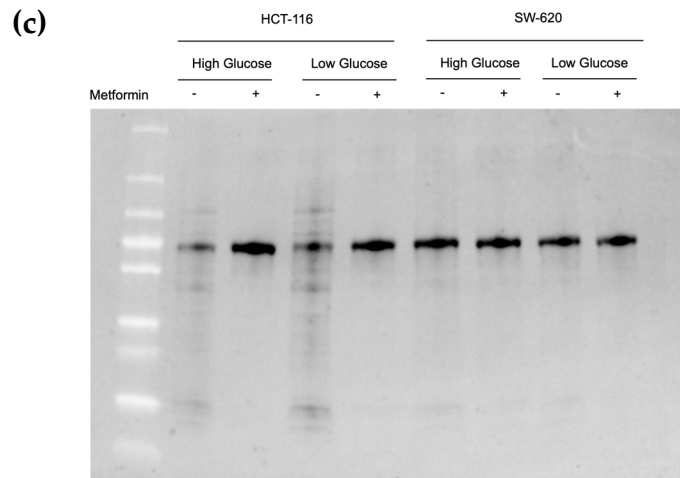


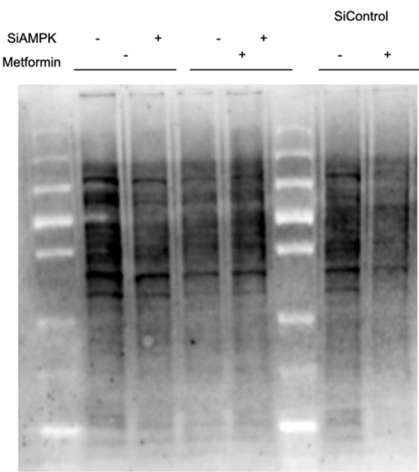
**Figure S1 : Growth curve of HCT-116 and SW-620 in Low and High Glucose.** Cell count measurement over 72 hours with the Incucyte and the cell by cell software (Sartorius). Made in technical duplicate.



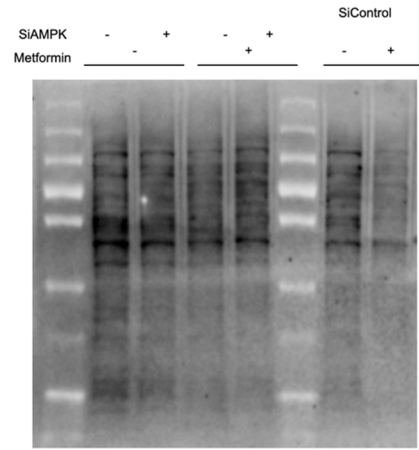


**Figure S2 : Quantification of total protein with QStain Total Western Blot**  
*in vitro* **Figure 3. (a)** Western Blot E-cadherin **(b)** Western Blot Sortilin **(c)** Western Blot LC3-B **(d)** Western Blot MMP2 / MMP9

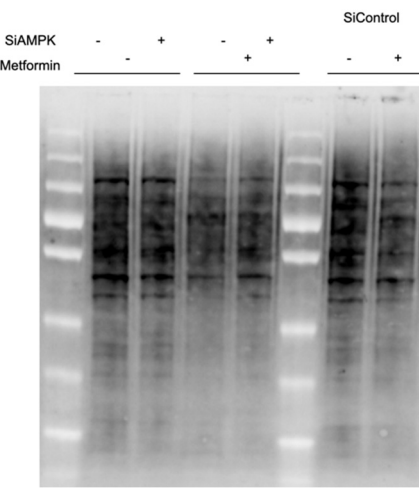
(a)

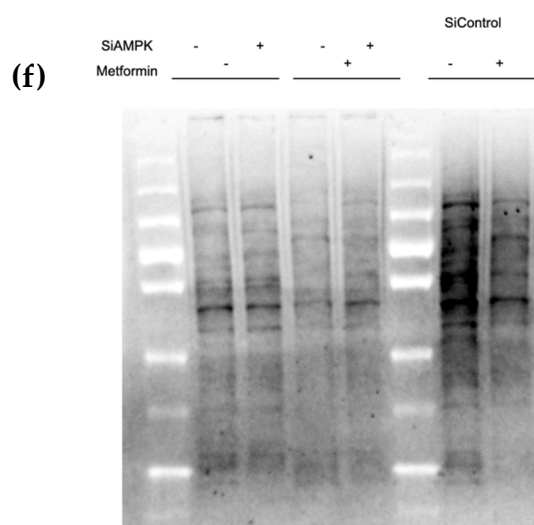
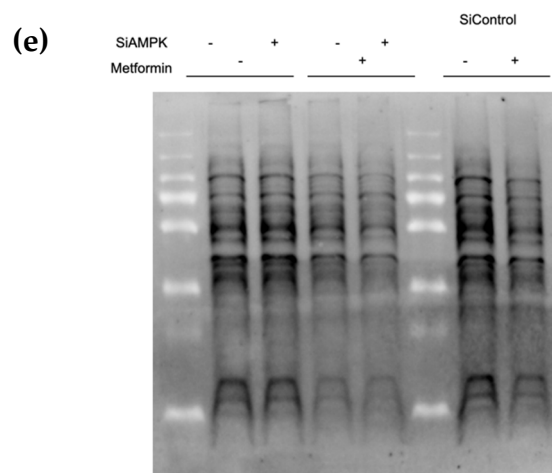
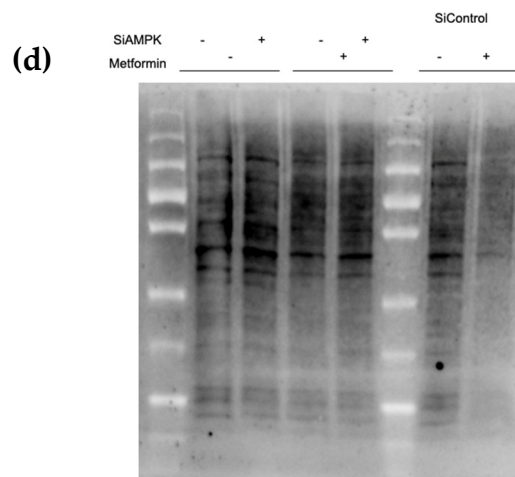


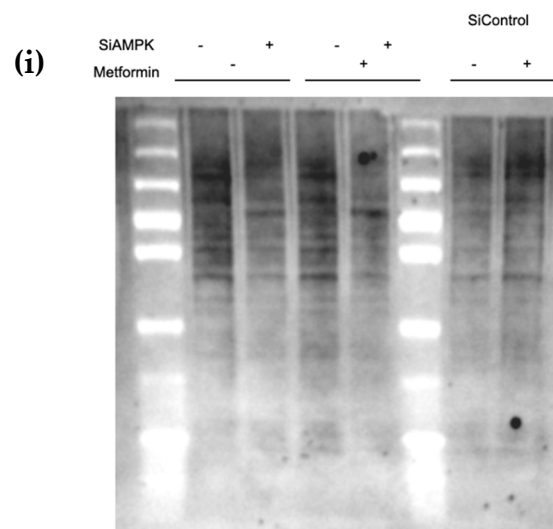
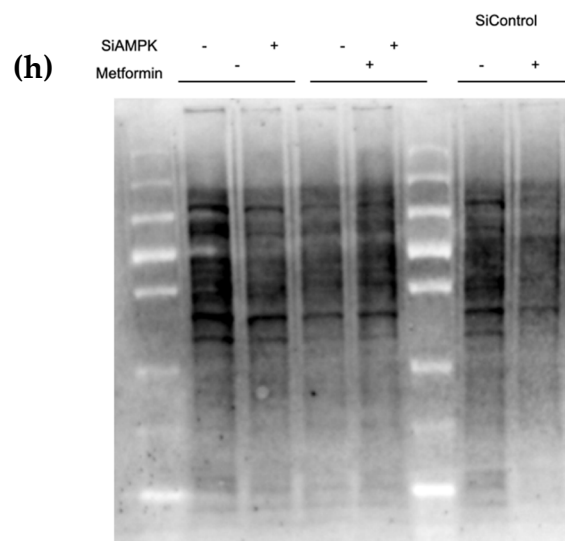
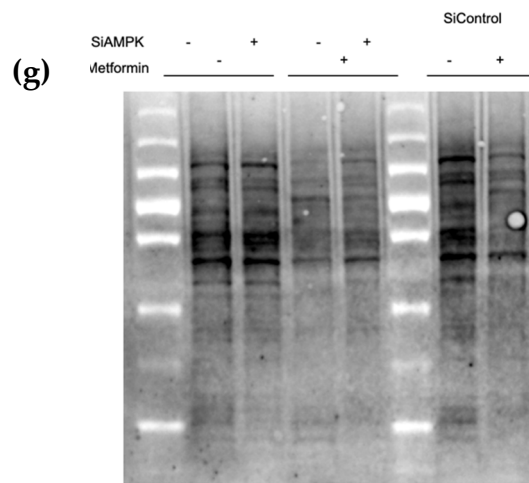
(b)

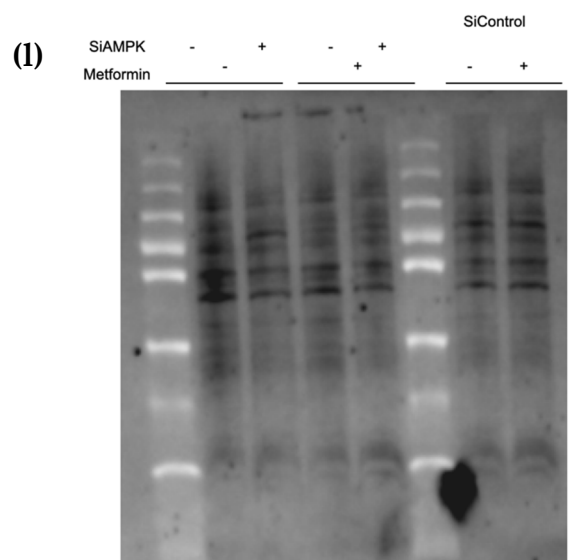
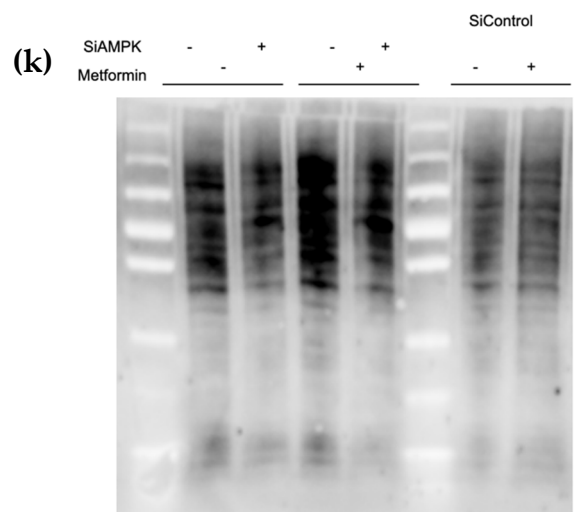
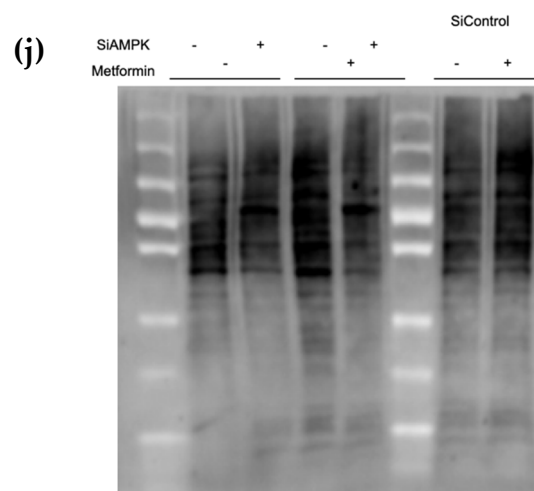


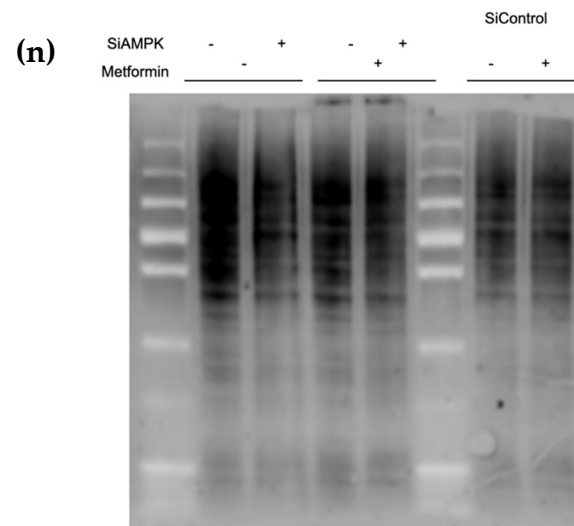
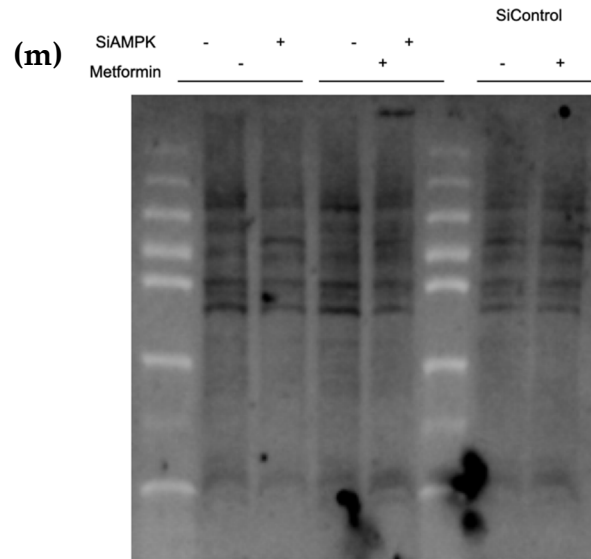
(c)











**Figure S3 : Quantificaton of total protein with QStain Total Western Blot *in vitro* Figure 4. (a)** Western Blot AMPK/Sortilin HCT-116 High-Glucose **(b)** Western Blot E-cadherin HCT-116 High- Glucose **(c)** Western Blot MMP2/MMP9 HCT-116 High- Glucose **(d)** Western Blot LC3-B HCT-116 High- Glucose **(e)** Western Blot AMPK HCT-116 Low-Glucose **(f)** Western Blot E-cadherin HCT-116 Low-Glucose **(g)** Western Blot MMP2/MMP9/LC3-B HCT-116 Low-Glucose **(h)** Western Blot Sortilin HCT-116 Low-Glucose **(i)** Western Blot AMPK/Sortilin SW-620 High-Glucose **(j)** Western Blot E-cadherin SW-620 High-Glucose **(k)** Western Blot MMP2/MMP9/LC3-B SW-620 High-Glucose **(l)** Western Blot AMPK/Sortilin SW-620 Low-Glucose **(m)** Western Blot E-cadherin SW-620 Low-Glucose **(n)** Western Blot MMP2/MM9/LC3-B SW-620 Low-Glucose

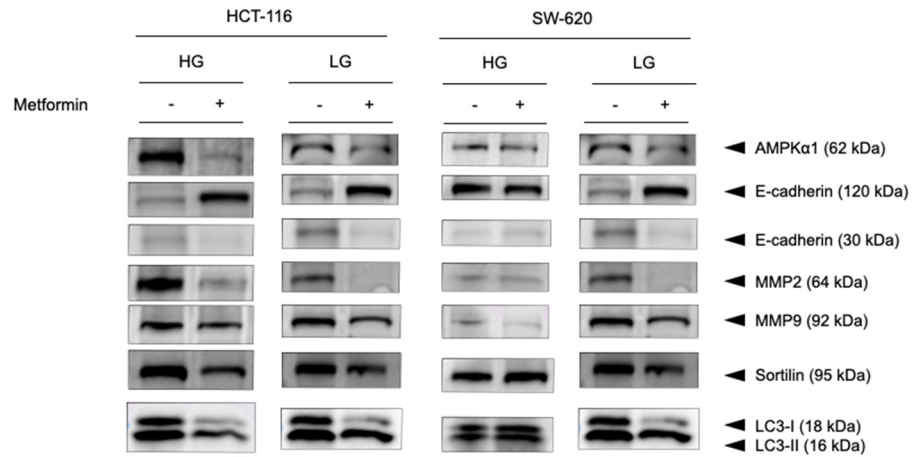


Figure S4 : Western Blot of siRNA Control used in reference to siRNA AMPK presented in Figure 4.

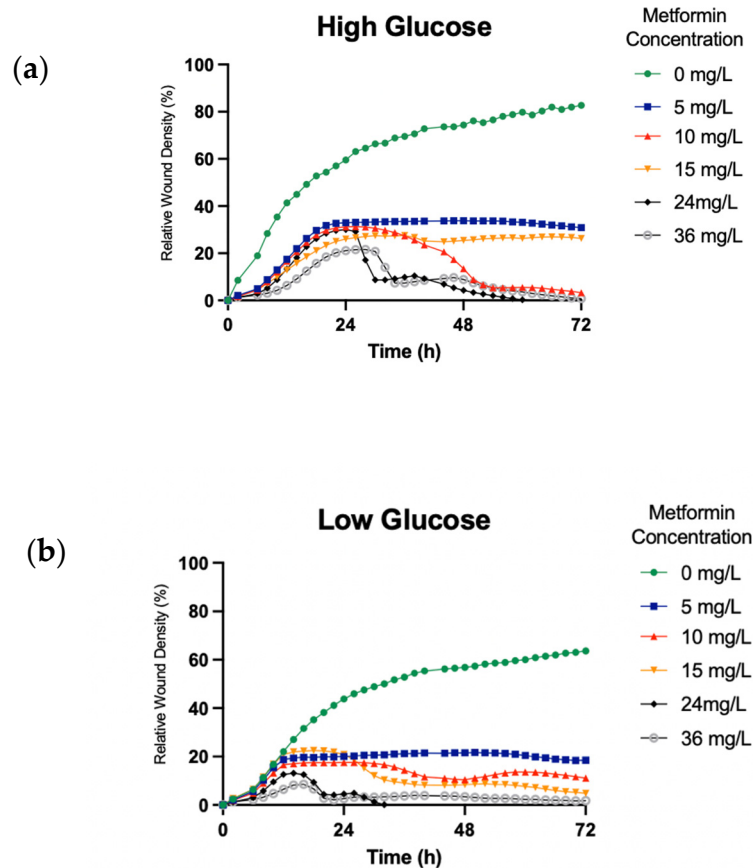


Figure S5 : Impact of Metformin on HCT-116 migration depending on glucose concentrations. (a) HCT-116 cells in High Glucose media were treated with different doses of Metformin for 72 hours. Relative Wound Density was



quantified by wound-healing assay using Incucyte software. **(b)** HCT-116 cells in Low Glucose media were treated with different doses of Metformin for 72 hours. Relative Wound Density was quantified by wound-healing assay using Incucyte software.