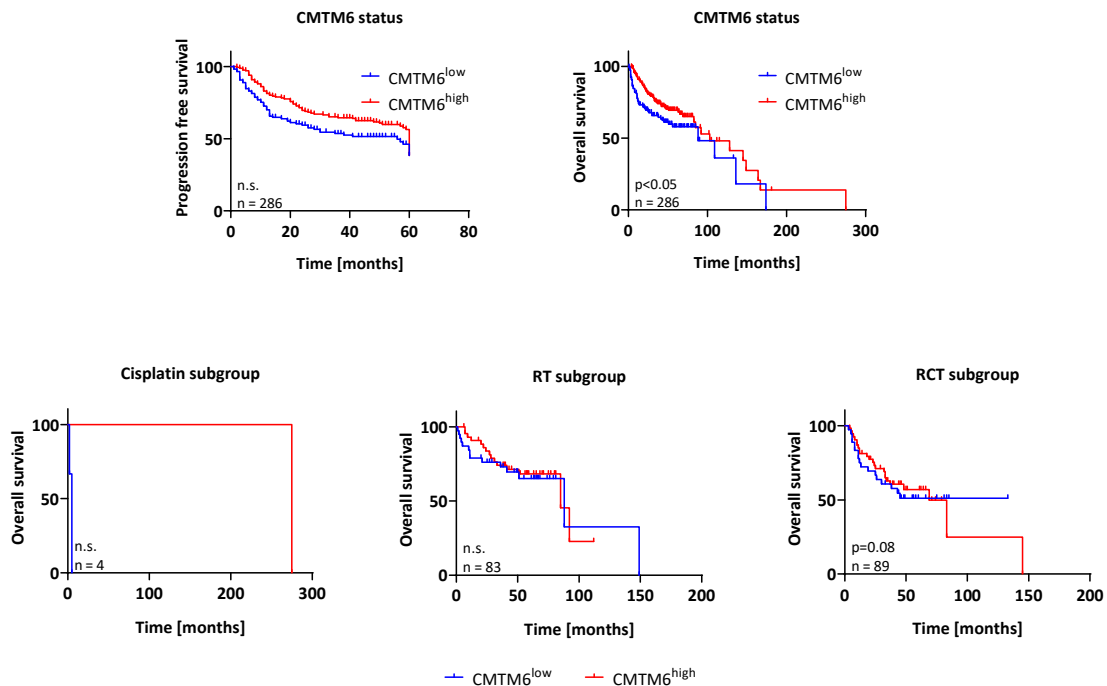


Supplementary Figure S1.: Staining for immune checkpoint molecules and immune cells in *high vs. low* expressing cases. Legend: Staining for immune checkpoint molecules and immune cells in high vs. low expressing cases: Upper row displays head and neck squamous cell carcinomas with PD-L1 positivity (A), high CMTM6 expression (B), and high status of infiltrating CTLA-4<sup>+</sup> (C) and FOXP3<sup>+</sup> (D) immune cells. Lower row displays head and neck squamous cell carcinomas with PD-L1 negativity (E), low CMTM6 expression (F), and low status of infiltrating CTLA-4<sup>+</sup> (G) and FOXP3<sup>+</sup> (H) immune cells. PD-L1 and CMTM6 assessed using the combined positive score (cut off PD-L1:  $\geq 1$ ; cut off CMTM6:  $\geq 10$ ). All 100x. Scale bar 100µm.



Supplementary Figure S2.: Progression-free survival and overall survival in the validation cohort stratified by CMTM6 independent of treatment and for subgroups receiving either chemotherapy, radiation or chemoradiation.