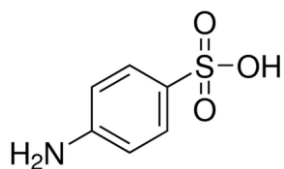


Supplementary S1



Feather keratin

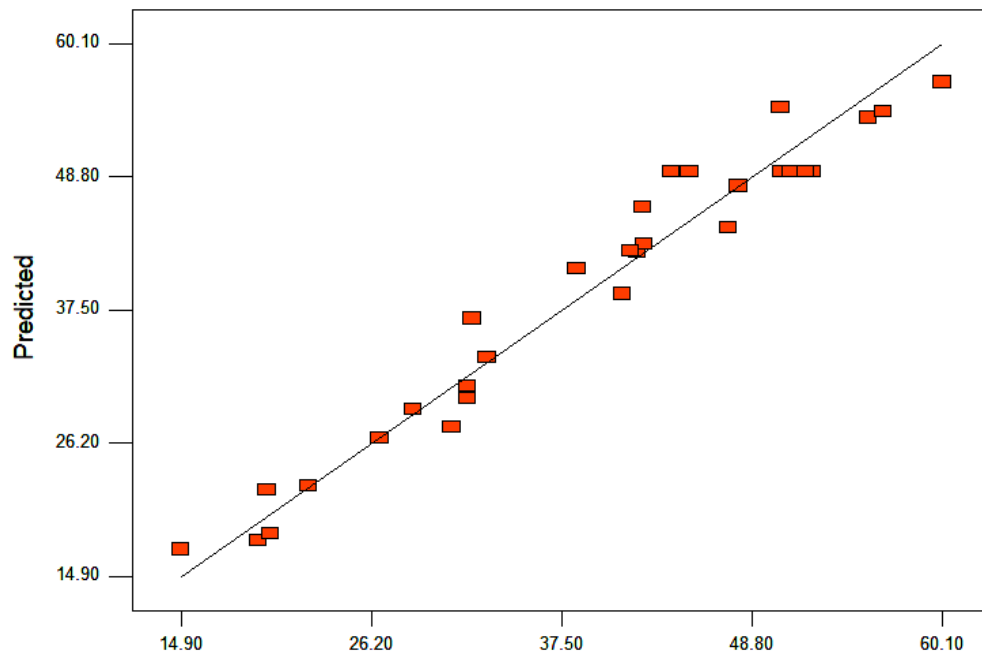


sulfanilic acid + NaNO₂

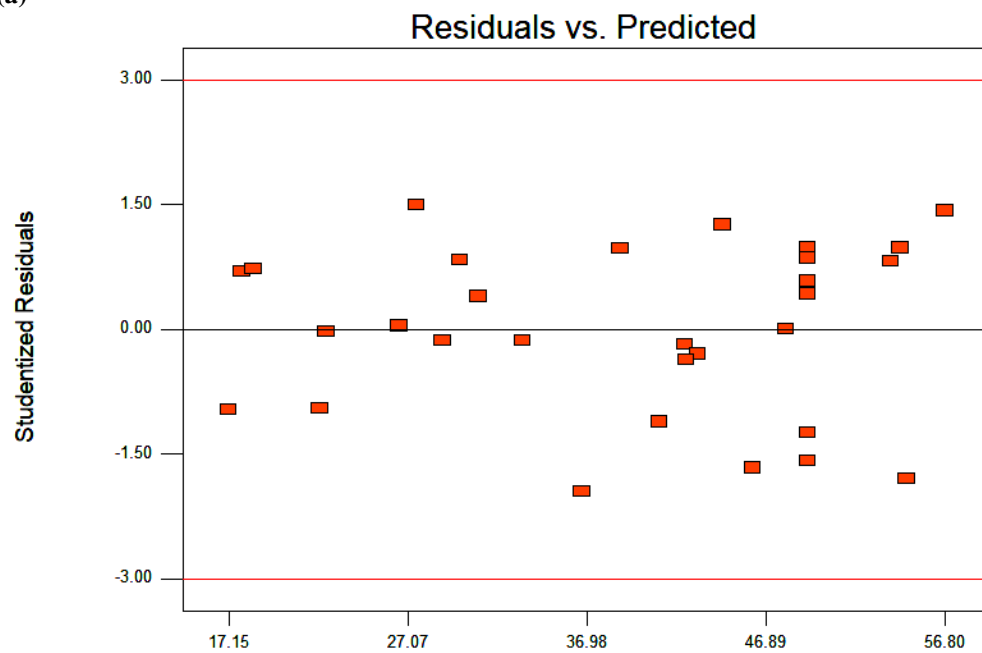


azokeratin

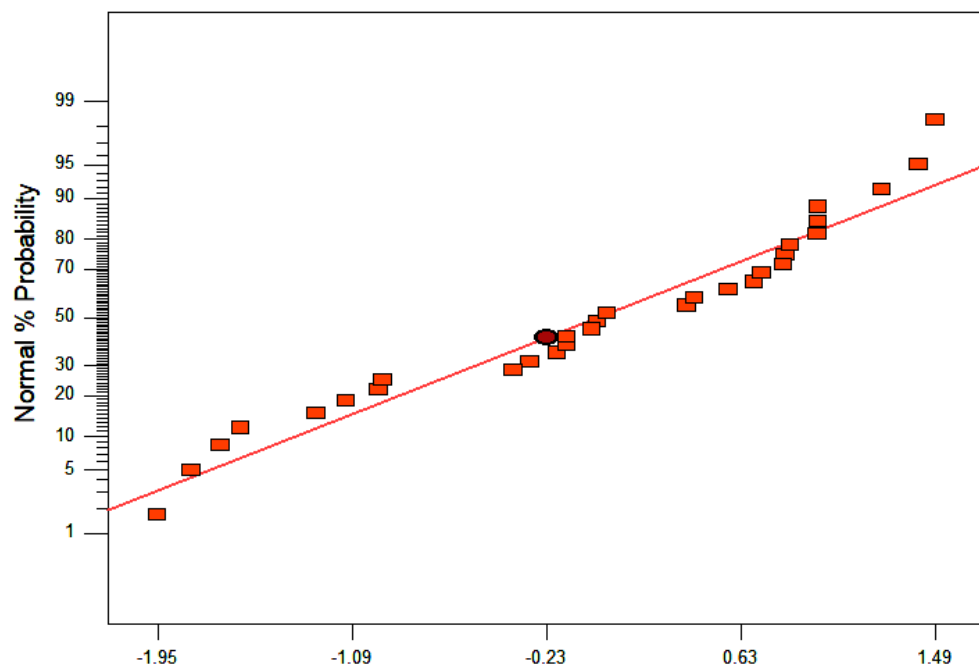
Figure S1. Azokeratin formation from feather keratin treated with the azotization of sulfanilic acid.



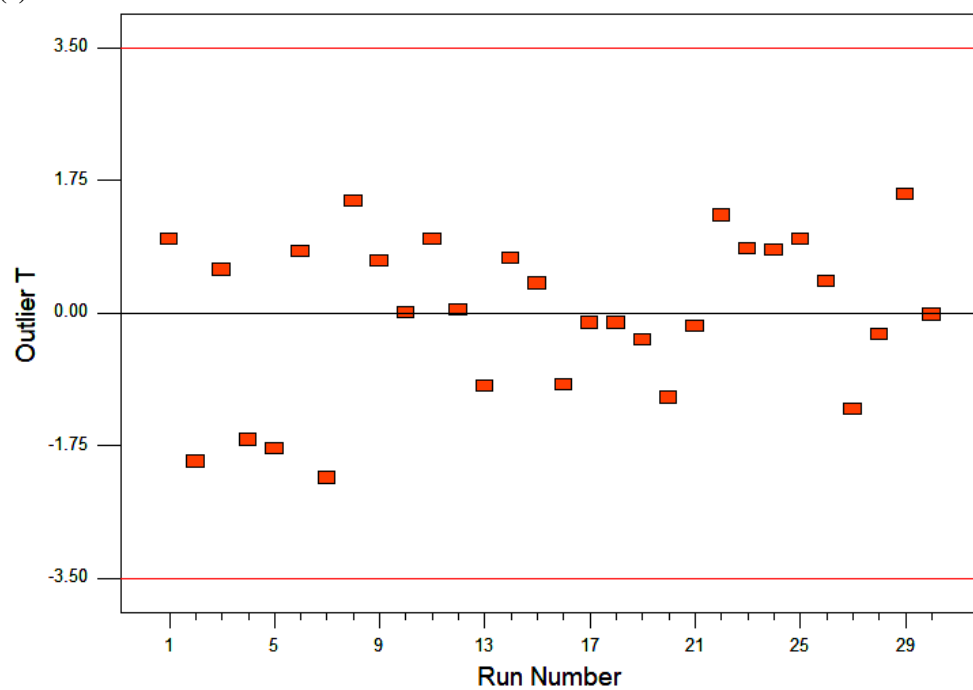
(a)



(b)



(c)



(d)

Figure S2. Model diagnostic plots; (a) predicted versus actual, (b) studentized residue versus predicted, (c) normal plots of residue and (d) outlier T versus run.